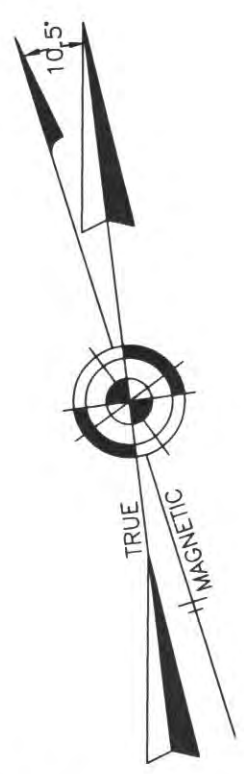


TOWNSHIP OF WASHINGTON
COUNTY OF BURLINGTON

TOWNSHIP OF WASHINGTON
COUNTY OF BURLINGTON



MULLICA

RIVER

EGG HARBOR AVENUE

EGG HARBOR AVENUE

PLATE 59

WASHINGTON AVENUE

LONDON AVENUE

ZSCOCKE

LIVERPOOL AVENUE

PHILADELPHIA AVE.

CINCINNATI AVE.

PLATE 64

PLATE 60

PLATE 62

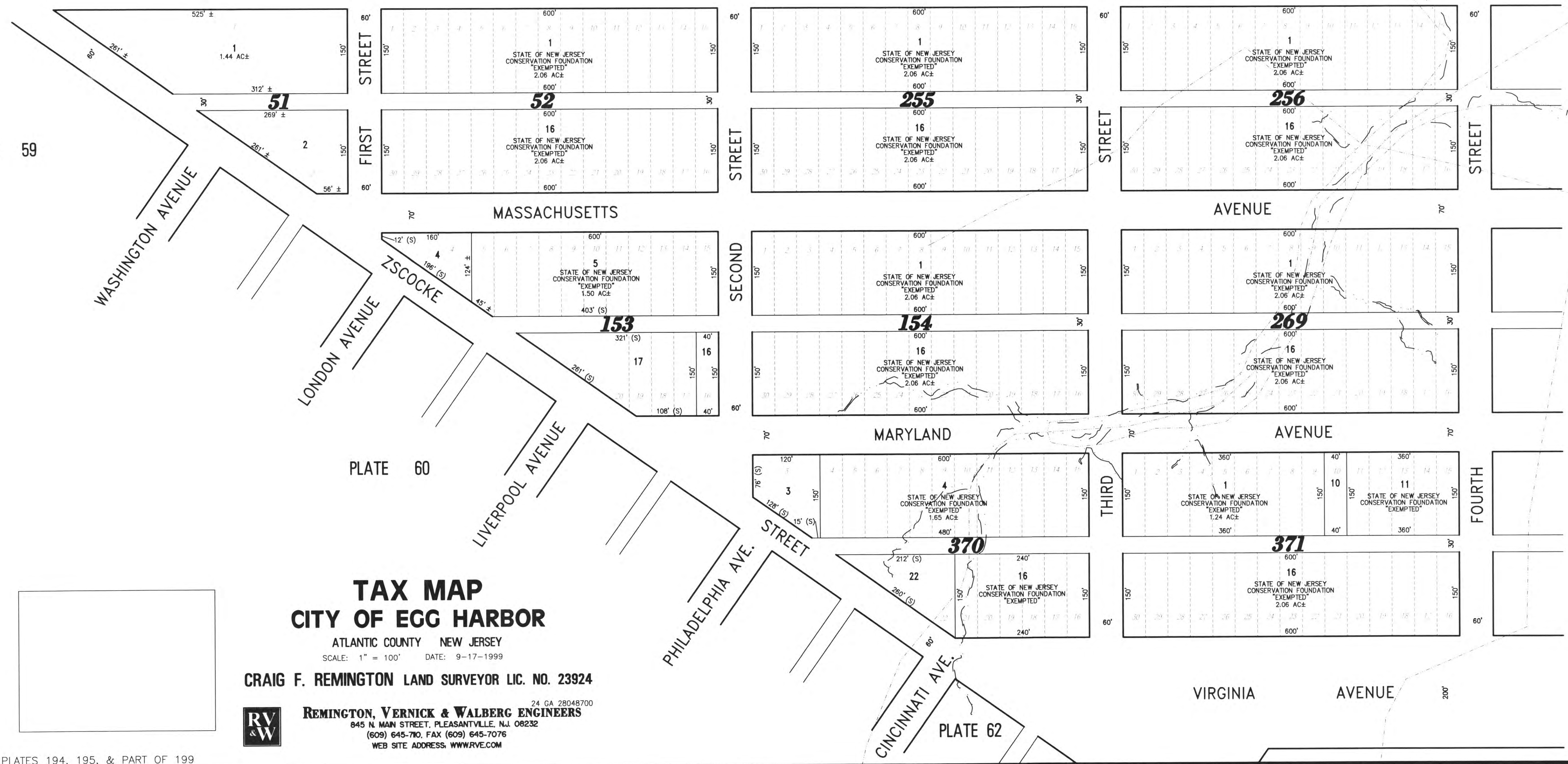
TAX MAP CITY OF EGG HARBOR

ATLANTIC COUNTY NEW JERSEY
SCALE: 1" = 100' DATE: 9-17-1999

CRAIG F. REMINGTON LAND SURVEYOR LIC. NO. 23924



REMINGTON, VERNICK & WALBERG ENGINEERS
24 GA 28048700
845 N. MAIN STREET, PLEASANTVILLE, N.J. 08232
(609) 645-7100, FAX (609) 645-7076
WEB SITE ADDRESS: WWW.RVE.COM



REVISED BY REMINGTON AND VERNICK ENGINEERS - 10-18-2005. 01071323

COMBINED PLATE - OLD PLATES 194, 195, & PART OF 199