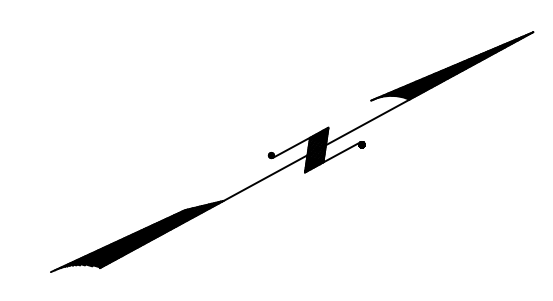


REVISIONS			
DATE	BY	LIC. NO.	COMMENTS
6/23/10	JAM	2991B	



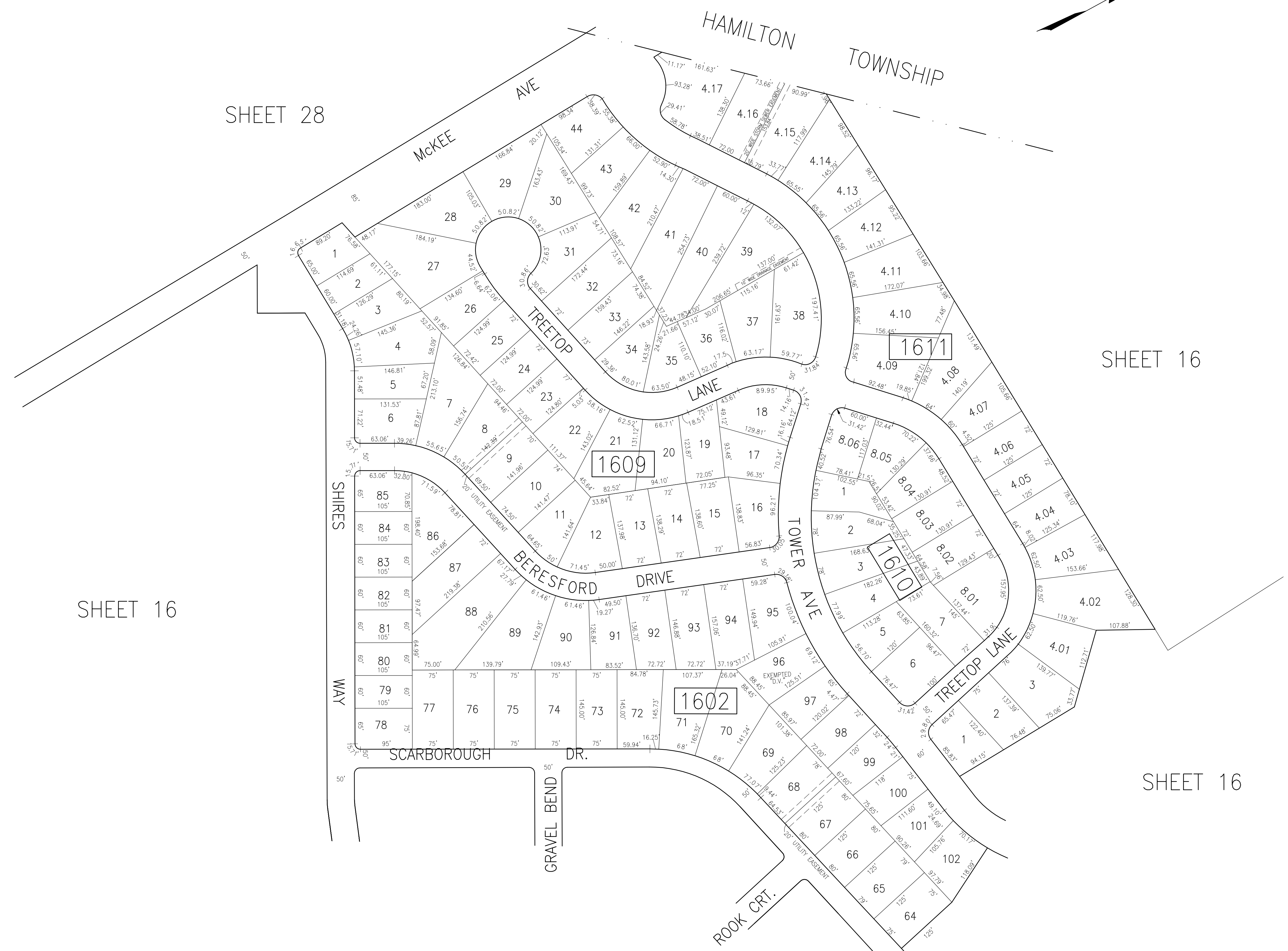
SHEET 28

SHEET 16

SHEET 16

SHEET 16

SHEET 16



THIS SHEET HAS BEEN DRAWN USING
COMPUTER AIDED DRAFTING/DESIGN (CAD/D).

TAX MAP
TOWNSHIP OF EGG HARBOR
ATLANTIC COUNTY, NEW JERSEY
SCALE: 1"=100' JANUARY 2008
JAMES A. MOTT, PE, PLS
PROFESSIONAL ENGINEER & LAND SURVEYOR
NEW JERSEY LICENSE NO. 2991B
3122 FIRE ROAD
EGG HARBOR TOWNSHIP, NJ 08234