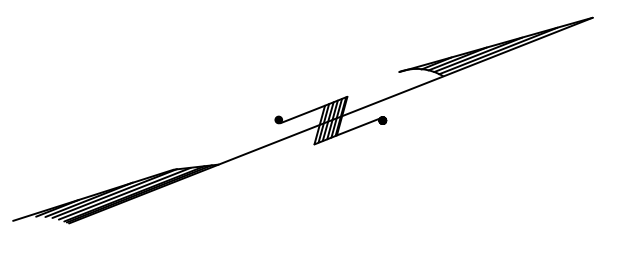
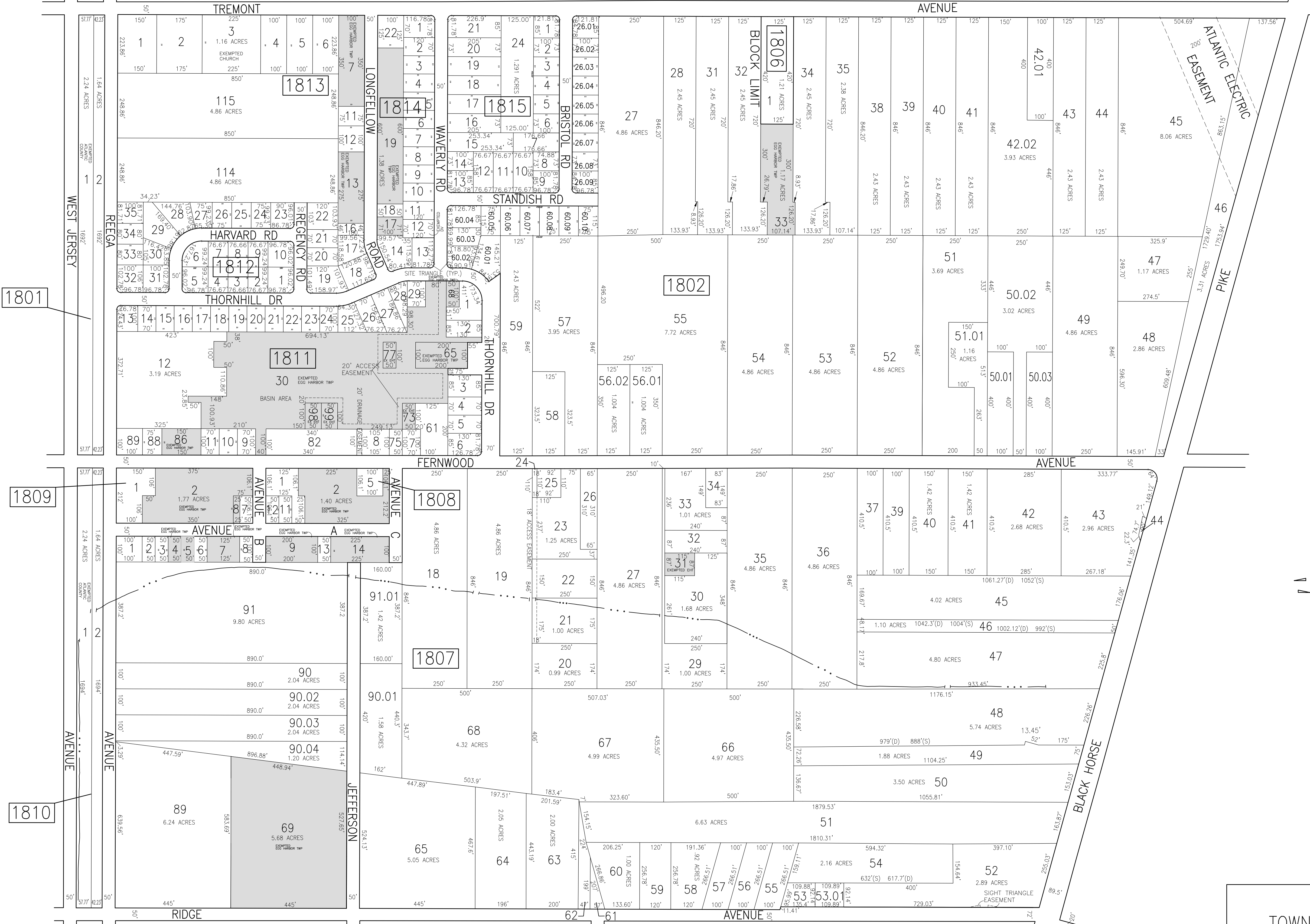


REVISIONS				REVISIONS				REVISIONS			
DATE	BY	LIC. NO.	COMMENTS	DATE	BY	LIC. NO.	COMMENTS	DATE	BY	LIC. NO.	COMMENTS
9/15/09	JAM	29918		1/7/15	JAM	29918		1/16/2020	JAM	29918	
6/18/10	JAM	29918		7/28/17	JAM	29918		7/18/2020	JAM	29918	
3/12/12	JAM	29918		10/24/17	JAM	29918		5/24/2021	JAM	29918	
8/28/12	JAM	29918		3/2/18	JAM	29918					
6/12/13	JAM	29918		7/12/18	JAM	29918					
12/16/13	JAM	29918		8/28/18	JAM	29918					
12/26/14	JAM	29918		9/20/18	JAM	29918					
1/2/15	JAM	29918		12/16/19	JAM	29918					

SHEET 25

SHEET 13



TAX MAP
 TOWNSHIP OF EGG HARBOR
 ATLANTIC COUNTY, NEW JERSEY
 SCALE: 1"=200' JANUARY 2010
 JAMES A. MOTT, PE, PLS
 PROFESSIONAL ENGINEER & LAND SURVEYOR
 NEW JERSEY LICENSE NO. 29918
 3122 FIRE ROAD
 EGG HARBOR TOWNSHIP, NJ 08234

SHADED AREAS INDICATE
 EGG HARBOR TOWNSHIP
 EXEMPTED PROPERTY

THIS SHEET HAS BEEN DRAWN USING
 COMPUTER AIDED DRAFTING/DESIGN (CAD/D).