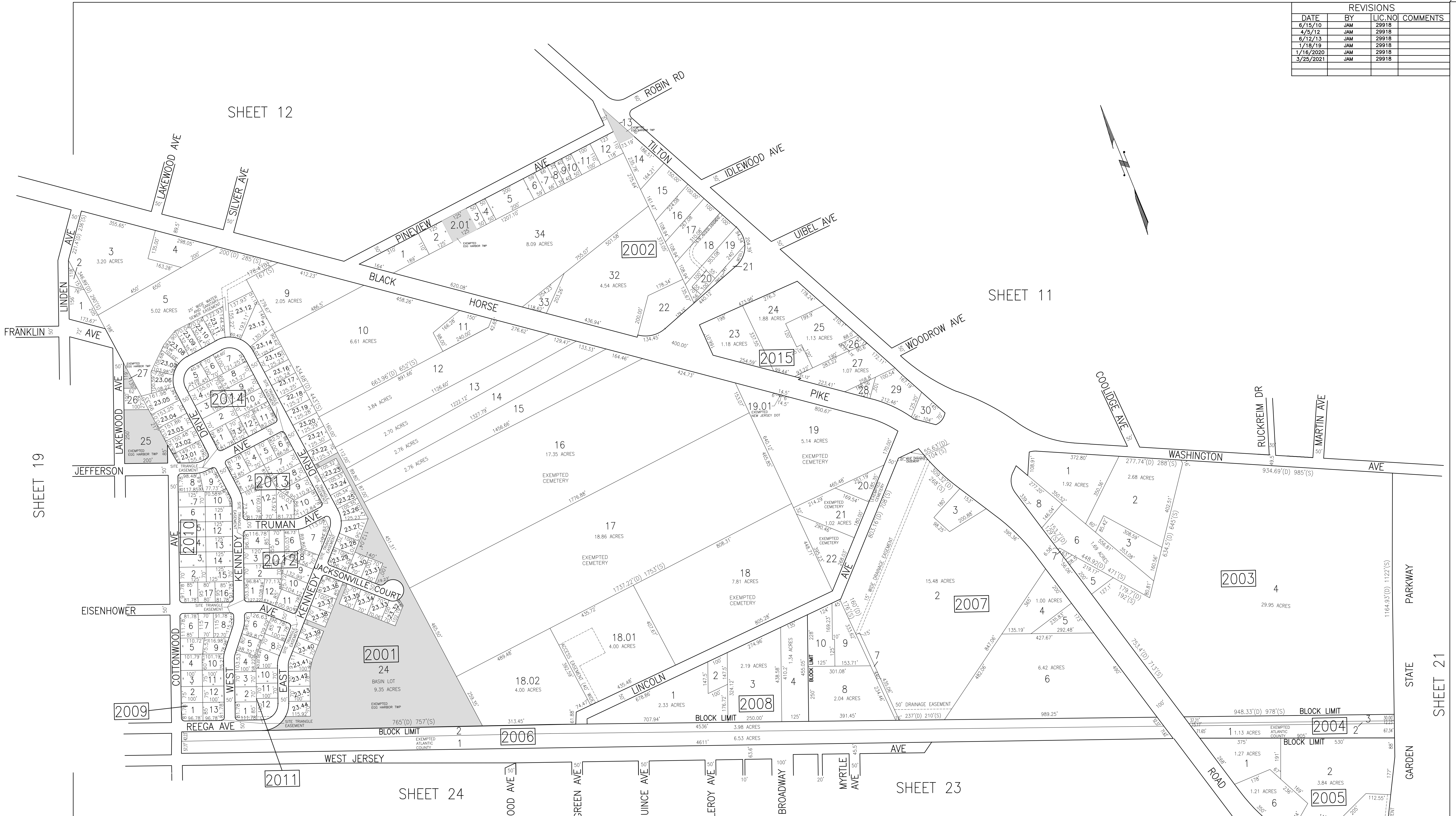


REVISIONS			
DATE	BY	LIC. NO.	COMMENTS
6/15/10	JAM	29918	
4/5/12	JAM	29918	
6/12/13	JAM	29918	
1/18/19	JAM	29918	
1/16/2020	JAM	29918	
3/25/2021	JAM	29918	



SHEET 19

SHEET 12

SHEET 11

SHEET 24

SHEET 23

SHEET 21

TAX MAP  
 TOWNSHIP OF EGG HARBOR  
 ATLANTIC COUNTY, NEW JERSEY  
 SCALE: 1"=200' JANUARY 2008  
 JAMES A. MOTT, PE, PLS  
 PROFESSIONAL ENGINEER & LAND SURVEYOR  
 NEW JERSEY LICENSE NO. 29918  
 3122 FIRE ROAD  
 EGG HARBOR TOWNSHIP, NJ 08234

THIS SHEET HAS BEEN DRAWN USING  
 COMPUTER AIDED DRAFTING/DESIGN (CAD/D).  
 SHADED AREAS INDICATE  
 EGG HARBOR TOWNSHIP  
 EXEMPTED PROPERTY