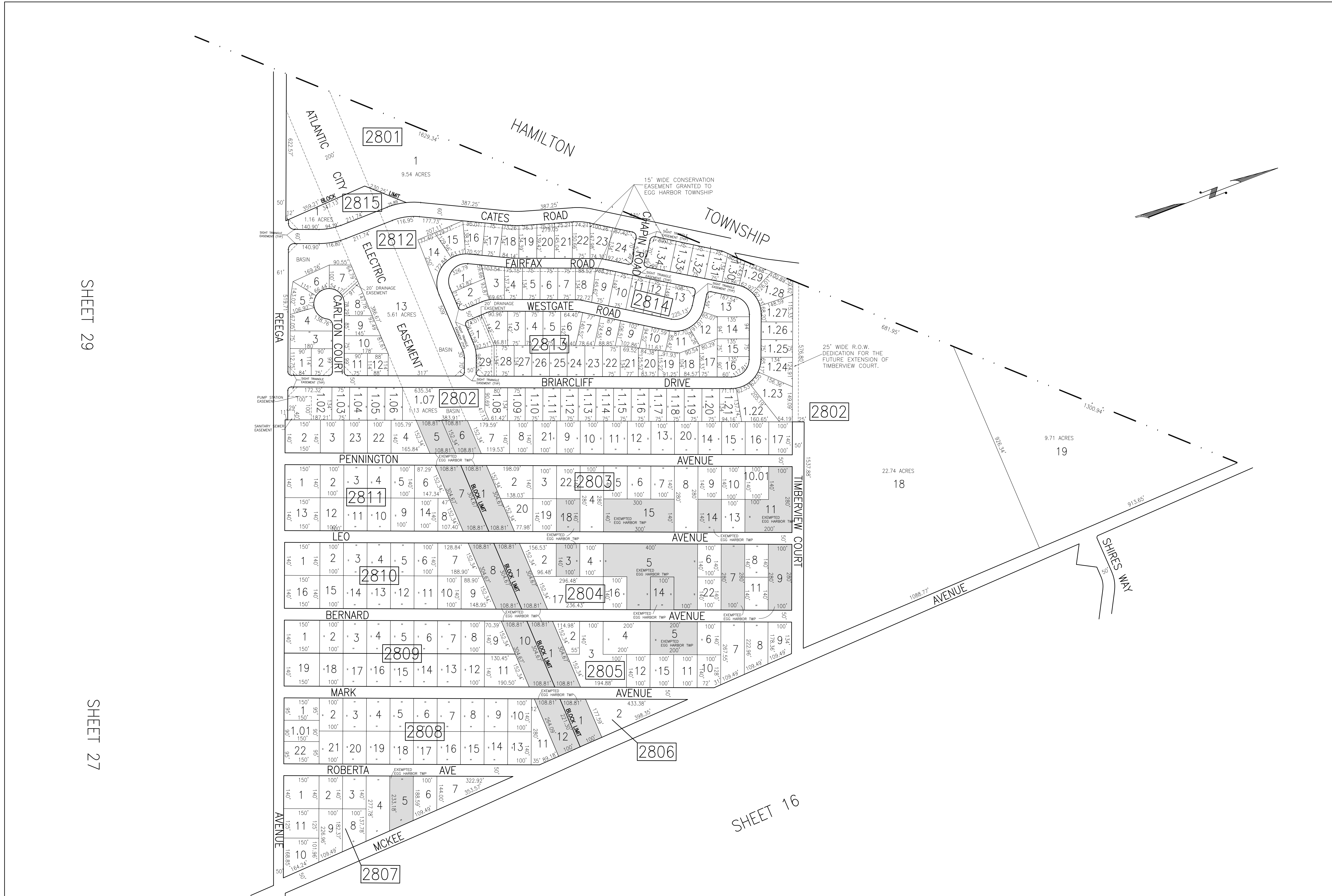


REVISIONS			
DATE	BY	LIC. NO.	COMMENTS
6/17/10	JAM	29918	
1/14/16	JAM	29918	
7/27/17	JAM	29918	
2/23/18	JAM	29918	
9/20/18	JAM	29918	
1/15/19	JAM	29918	
12/17/19	JAM	29918	
2/4/2020	JAM	29918	Ord. # 20-2017

REVISIONS			
DATE	BY	LIC. NO.	COMMENTS
7/17/2020	JAM	29918	



SHEET 29

SHEET 27

SHEET 16

SHADED AREAS INDICATE EGG HARBOR TOWNSHIP EXEMPTED PROPERTY
 THIS SHEET HAS BEEN DRAWN USING COMPUTER AIDED DRAFTING/DESIGN (CAD/D).

TAX MAP
 TOWNSHIP OF EGG HARBOR
 ATLANTIC COUNTY, NEW JERSEY
 SCALE: 1"=200' JANUARY 2008
JAMES A. MOTT, PE, PLS
PROFESSIONAL ENGINEER & LAND SURVEYOR
 NEW JERSEY LICENSE NO. 29918
 3122 FIRE ROAD
 EGG HARBOR TOWNSHIP, NJ 08234