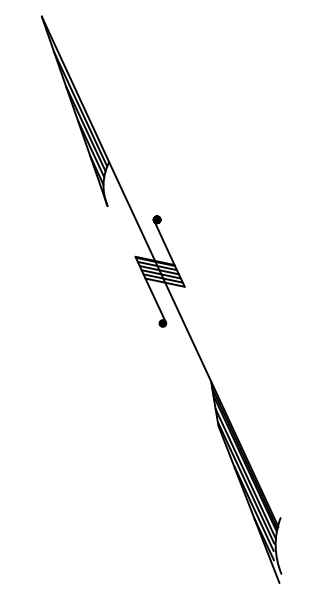
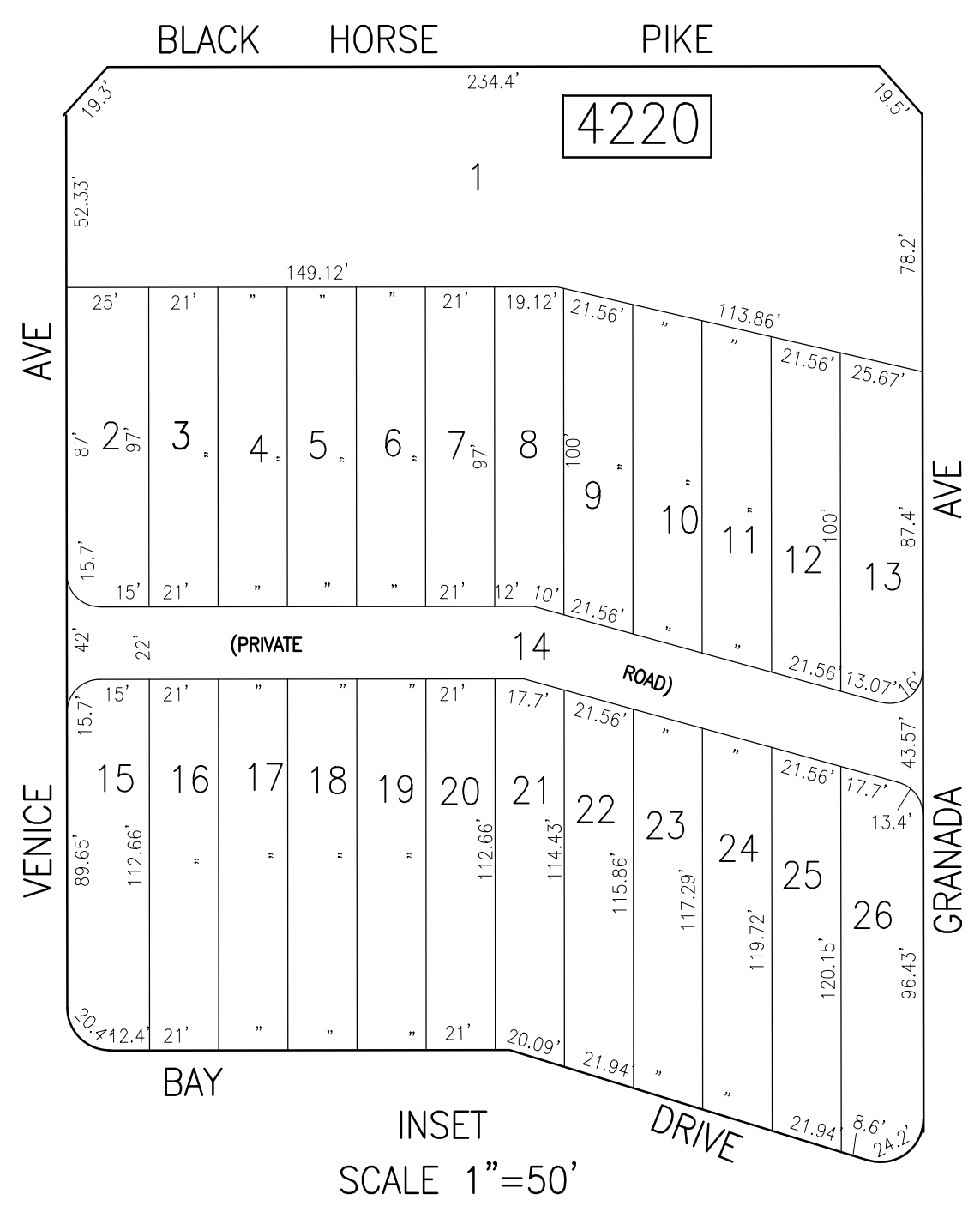
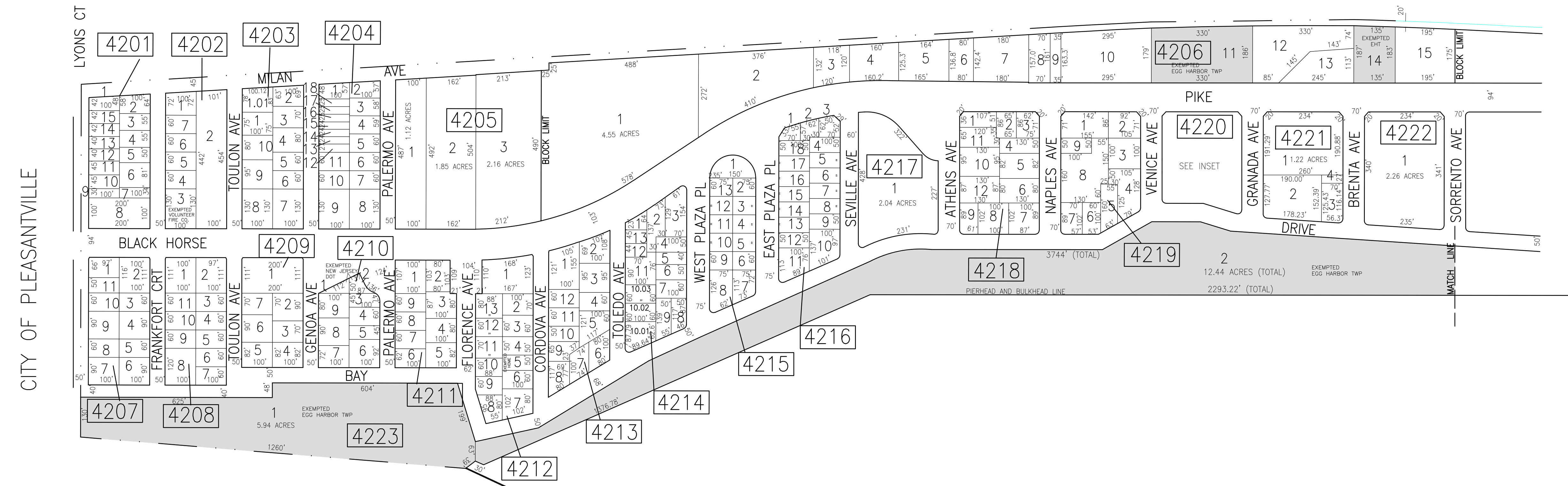


REVISIONS			
DATE	BY	LIC. NO	COMMENTS
6/18/10	JAM	29918	
12/16/13	JAM	29918	
9/30/16	JAM	29918	
1/17/19	JAM	29918	



CITY OF PLEASANTVILLE



LAKES BAY
CITY OF PLEASANTVILLE

SHEET 43

SHADED AREAS INDICATE EGG HARBOR TOWNSHIP EXEMPTED PROPERTY. THIS SHEET HAS BEEN DRAWN USING COMPUTER AIDED DRAFTING/DESIGN (CAD/D).

TAX MAP
TOWNSHIP OF EGG HARBOR
ATLANTIC COUNTY, NEW JERSEY
SCALE: 1"=200' JANUARY 2008
JAMES A. MOTT, PE, PLS
PROFESSIONAL ENGINEER & LAND SURVEYOR
NEW JERSEY LICENSE NO. 29918
3122 FIRE ROAD
EGG HARBOR TOWNSHIP, NJ 08234