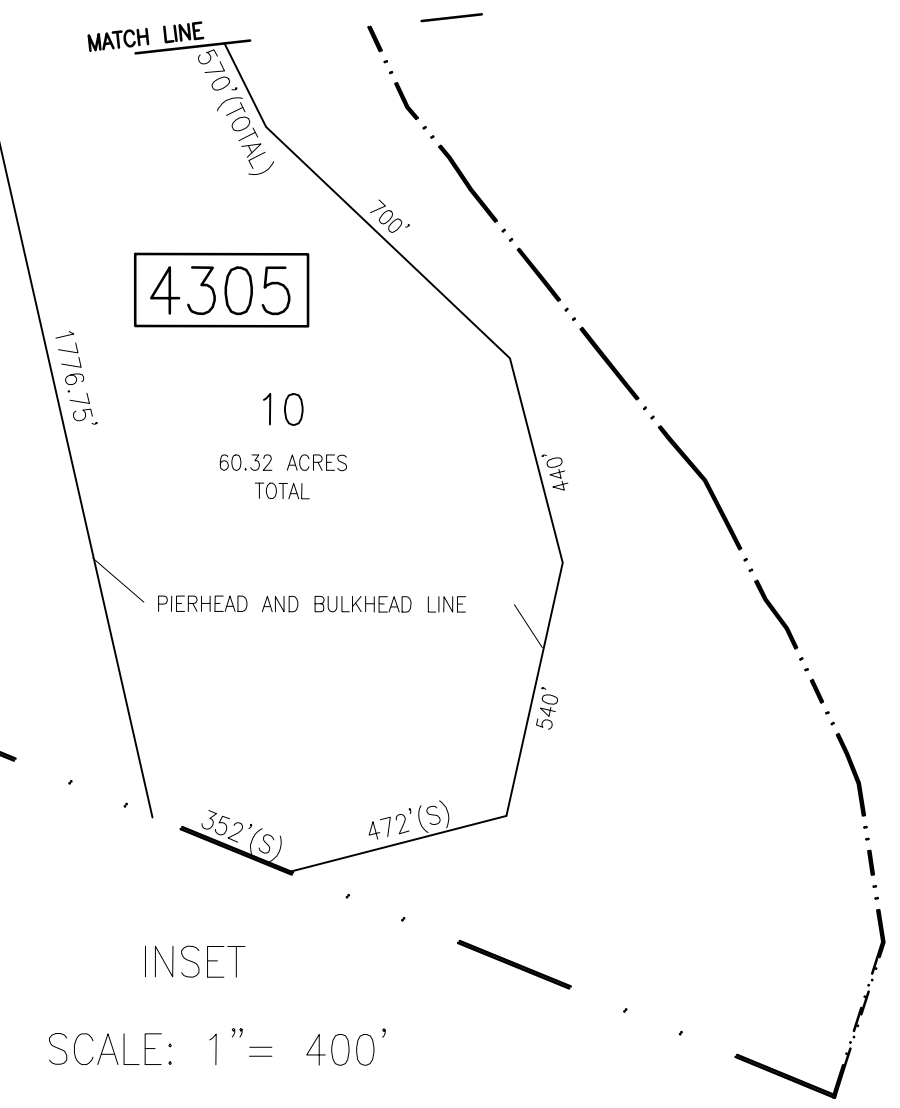
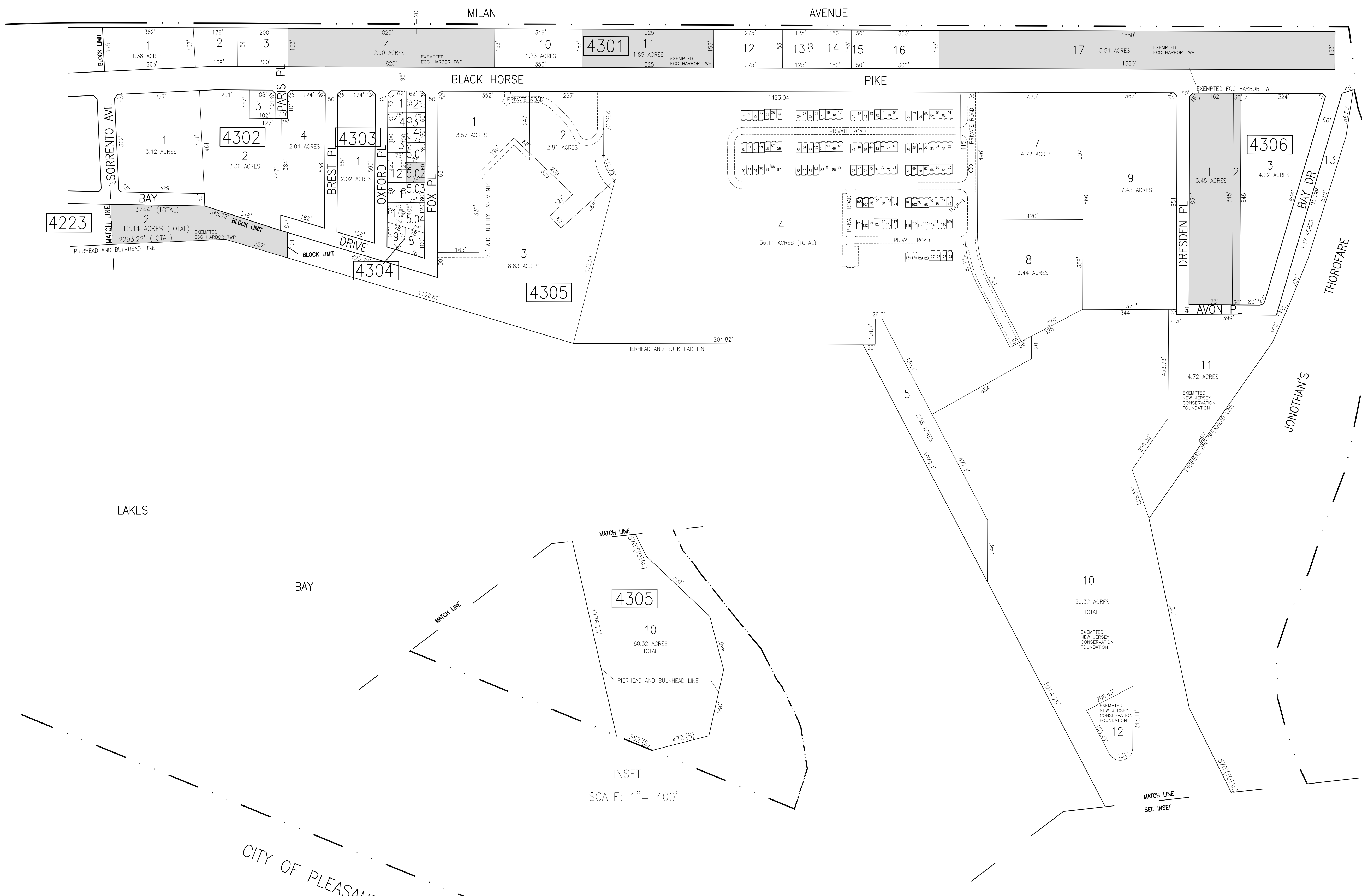


CITY OF PLEASANTVILLE

SHEET 42



REVISIONS			
DATE	BY	LIC. NO.	COMMENTS
6/23/10	JAM	29918	
12/16/13	JAM	29918	
12/29/14	JAM	29918	
1/7/15	JAM	29918	
10/24/17	JAM	29918	
7/25/18	JAM	29918	
1/16/2020	JAM	29918	
12/22/21	JAM	29918	

THIS SHEET HAS BEEN DRAWN USING  
COMPUTER AIDED DRAFTING/DESIGN (CAD/D).

SHADED AREAS INDICATE  
EGG HARBOR TOWNSHIP  
EXEMPTED PROPERTY

TAX MAP  
TOWNSHIP OF EGG HARBOR  
ATLANTIC COUNTY, NEW JERSEY  
SCALE: 1"=200' JANUARY 2008  
JAMES A. MOTT, PE, PLS  
PROFESSIONAL ENGINEER & LAND SURVEYOR  
NEW JERSEY LICENSE NO. 29918  
3122 FIRE ROAD  
EGG HARBOR TOWNSHIP, NJ 08234

ATLANTIC CITY