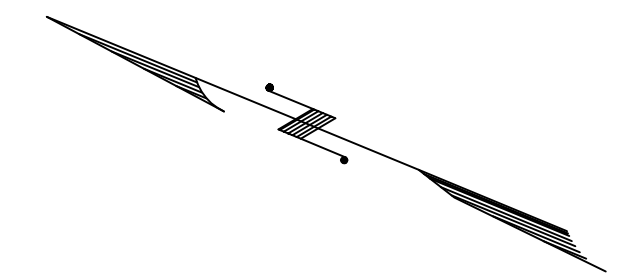


| REVISIONS | | | |
|-----------|-----|----------|----------|
| DATE | BY | LIC. NO. | COMMENTS |
| 6/23/10 | JAM | 29918 | |
| | | | |
| | | | |
| | | | |
| | | | |
| | | | |

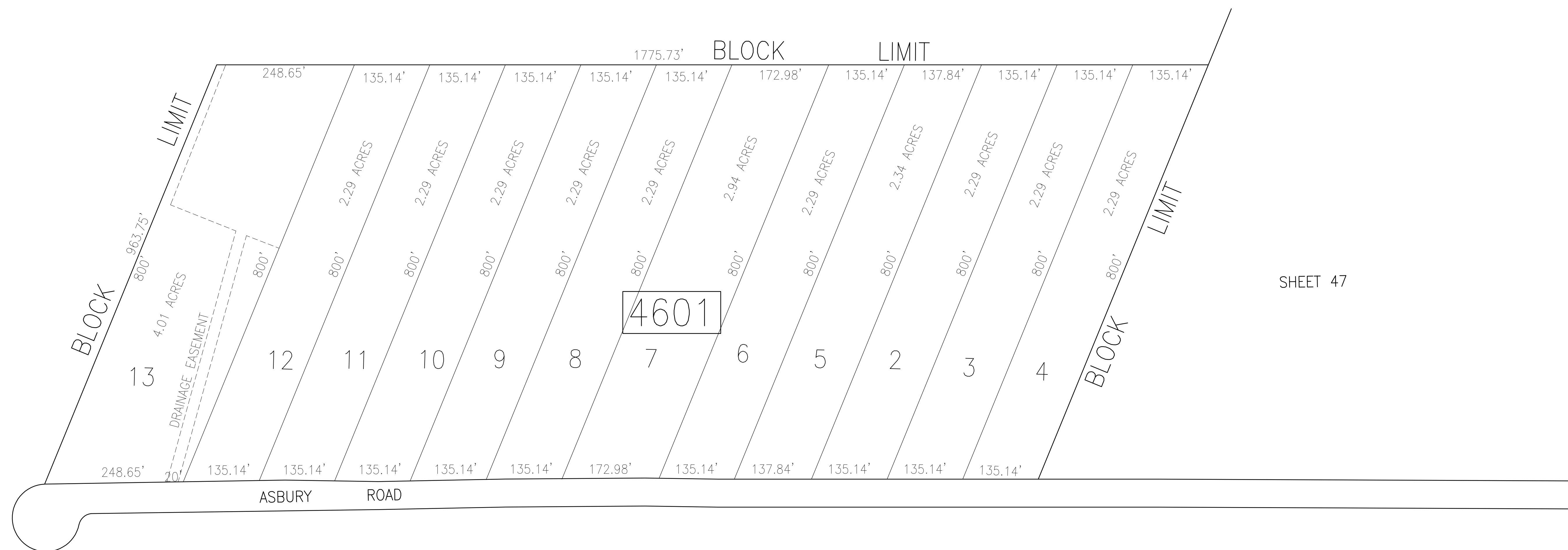


SHEET 45

SHEET 45

SHEET 47

SHEET 48



THIS SHEET HAS BEEN DRAWN USING
COMPUTER AIDED DRAFTING/DESIGN (CAD/D).

TAX MAP
 TOWNSHIP OF EGG HARBOR
 ATLANTIC COUNTY, NEW JERSEY
 SCALE: 1"=100' JANUARY 2008
 JAMES A. MOTT, PE, PLS
 PROFESSIONAL ENGINEER & LAND SURVEYOR
 NEW JERSEY LICENSE NO. 29918
 3122 FIRE ROAD
 EGG HARBOR TOWNSHIP, NJ 08234