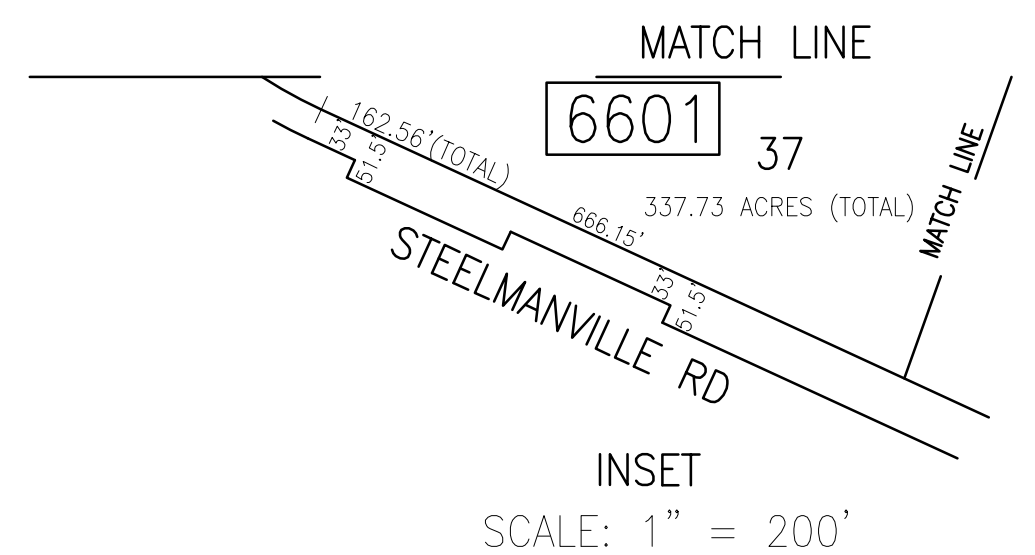


REVISIONS			
DATE	BY	LIC. NO.	COMMENTS
6/21/10	JAM	29918	
12/26/14	JAM	29918	
2/28/17	JAM	29918	

THIS SHEET HAS BEEN DRAWN USING
COMPUTER AIDED DRAFTING/DESIGN (CAD/D).



TAX MAP
TOWNSHIP OF EGG HARBOR
ATLANTIC COUNTY, NEW JERSEY
SCALE: 1"=200' JANUARY 2008
JAMES A. MOTT, PE, PLS
PROFESSIONAL ENGINEER & LAND SURVEYOR
NEW JERSEY LICENSE NO. 29918
3122 FIRE ROAD
EGG HARBOR TOWNSHIP, NJ 08234

SHADED AREAS INDICATE
EGG HARBOR TOWNSHIP
EXEMPTED PROPERTY

MATCH LINE (SEE INSET)