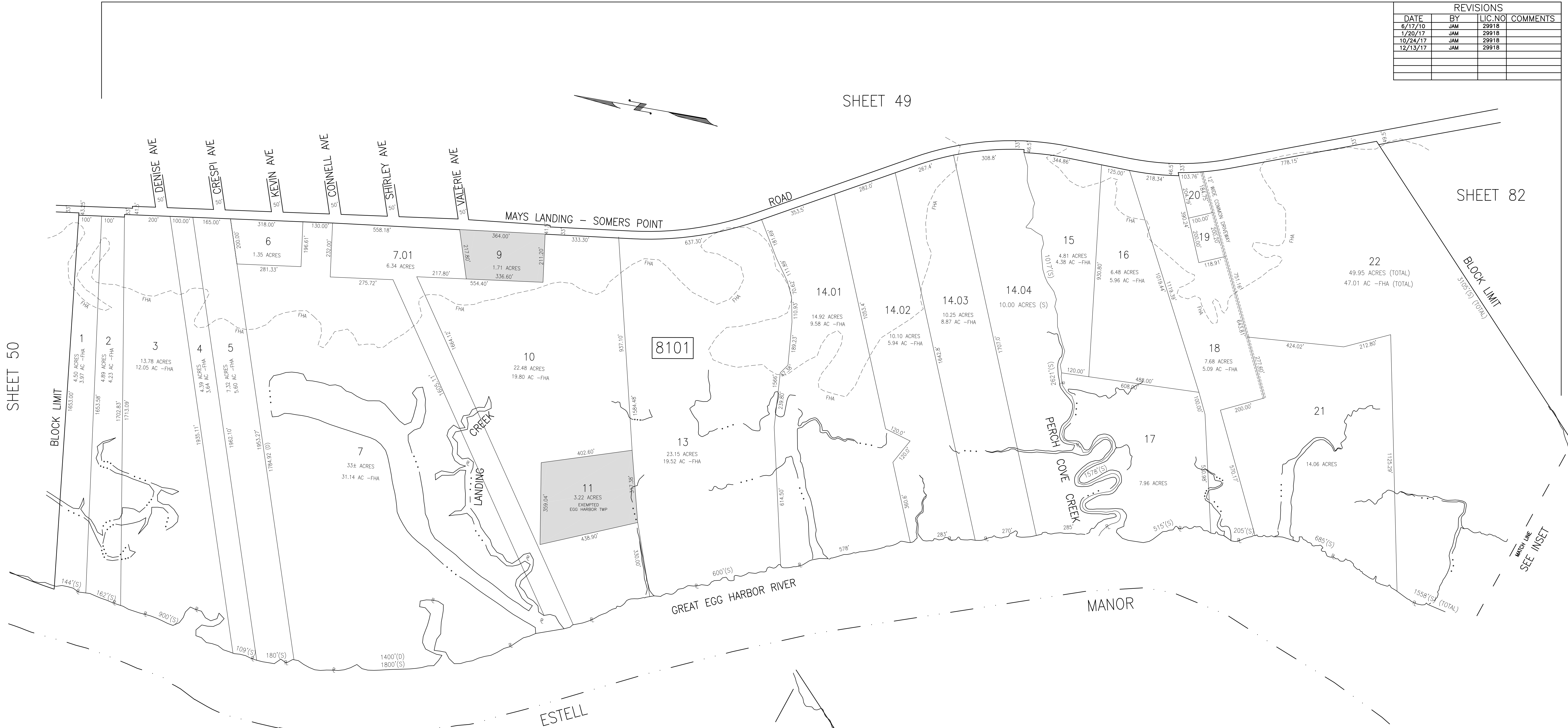


REVISIONS			
DATE	BY	LIC. NO.	COMMENTS
6/17/10	JAM	29918	
1/20/17	JAM	29918	
10/24/17	JAM	29918	
12/13/17	JAM	29918	

SHEET 49

SHEET 50

SHEET 82

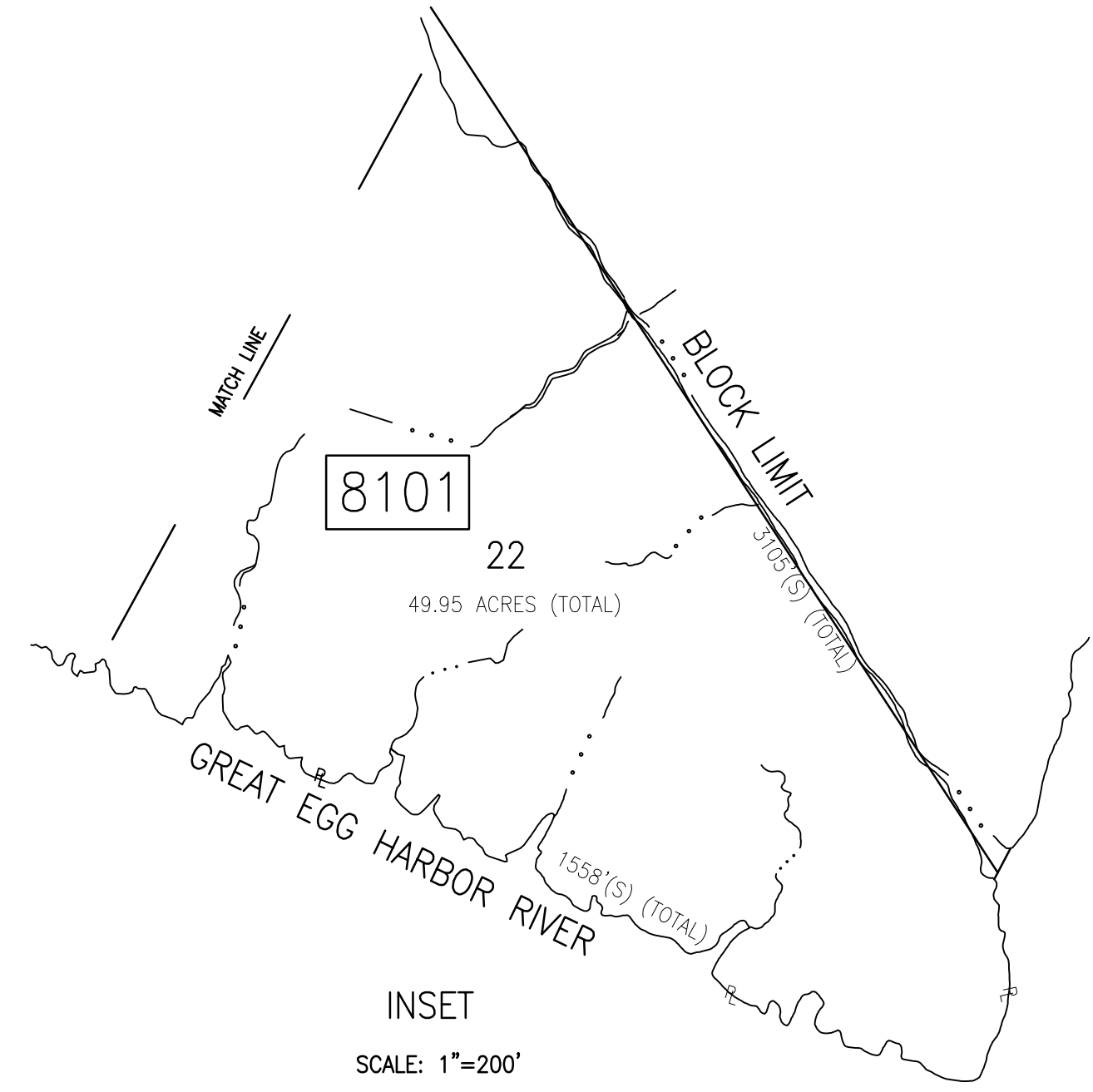


8101

GREAT EGG HARBOR RIVER

MANOR

ESTELL



8101

GREAT EGG HARBOR RIVER

THIS SHEET HAS BEEN DRAWN USING COMPUTER AIDED DRAFTING/DESIGN (CAD/D).

SHADED AREAS INDICATE EGG HARBOR TOWNSHIP EXEMPTED PROPERTY

TAX MAP
 TOWNSHIP OF EGG HARBOR
 ATLANTIC COUNTY, NEW JERSEY
 SCALE: 1"=200'
 JANUARY 2008
 JAMES A. MOTT, PE, PLS
 PROFESSIONAL ENGINEER & LAND SURVEYOR
 NEW JERSEY LICENSE NO. 29918
 3122 FIRE ROAD
 EGG HARBOR TOWNSHIP, NJ 08234