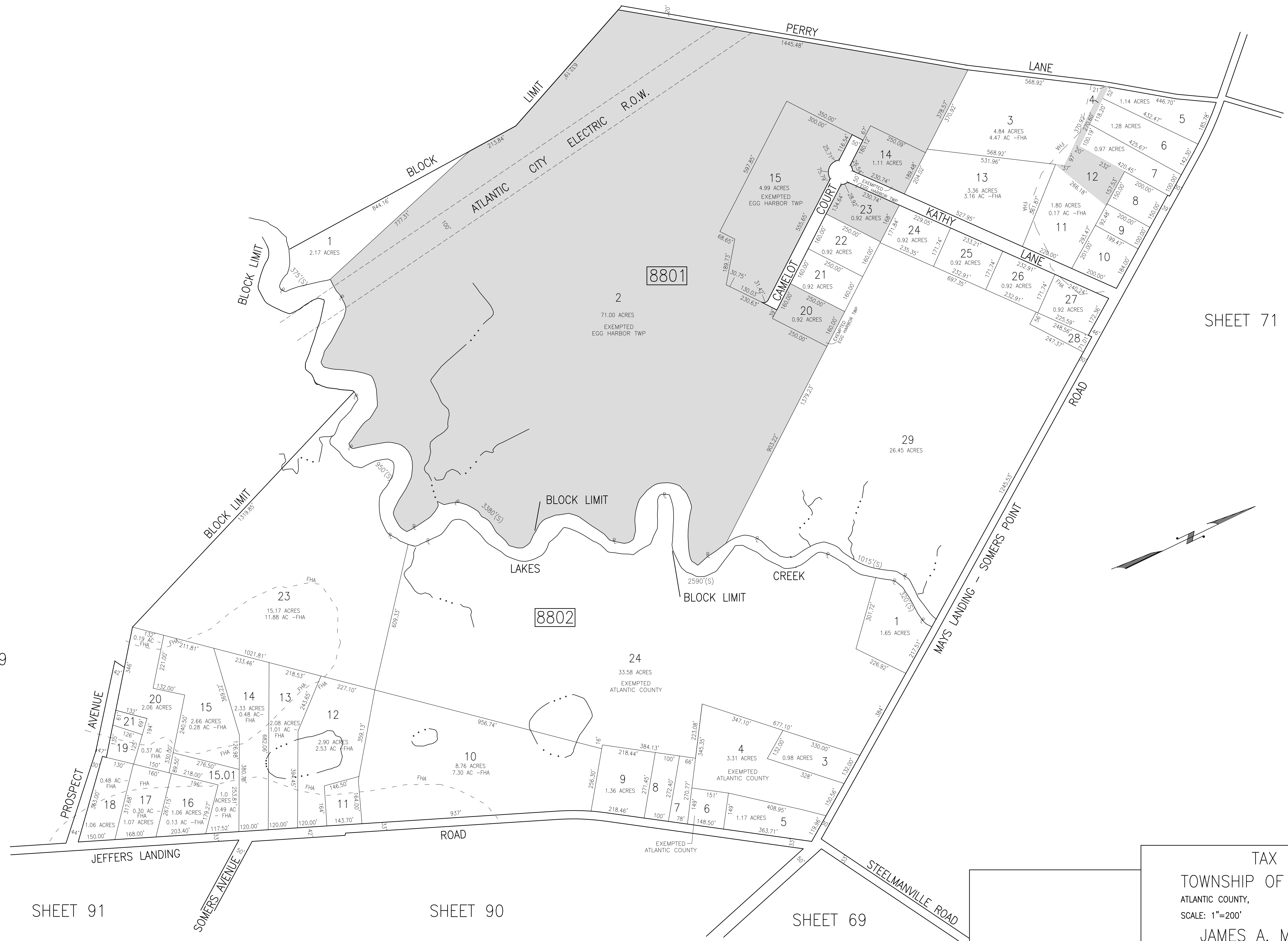


SHADED AREAS INDICATE THIS SHEET HAS BEEN DRAWN USING  
EGG HARBOR TOWNSHIP COMPUTER AIDED DRAFTING/DESIGN (CAD/D).

REVISIONS			
DATE	BY	LIC. NO.	COMMENTS
6/17/10	JAM	29918	
7/8/10	JAM	29918	
1/5/12	JAM	29918	
10/24/17	JAM	29918	
12/9/2021	JAM	29918	

SHEET 87



SHEET 71

SHEET 89

SHEET 91

SHEET 90

SHEET 69

TAX MAP  
 TOWNSHIP OF EGG HARBOR  
 ATLANTIC COUNTY, NEW JERSEY  
 SCALE: 1"=200' JANUARY 2008  
 JAMES A. MOTT, PE, PLS  
 PROFESSIONAL ENGINEER & LAND SURVEYOR  
 NEW JERSEY LICENSE NO. 29918  
 3122 FIRE ROAD  
 EGG HARBOR TOWNSHIP, NJ 08234