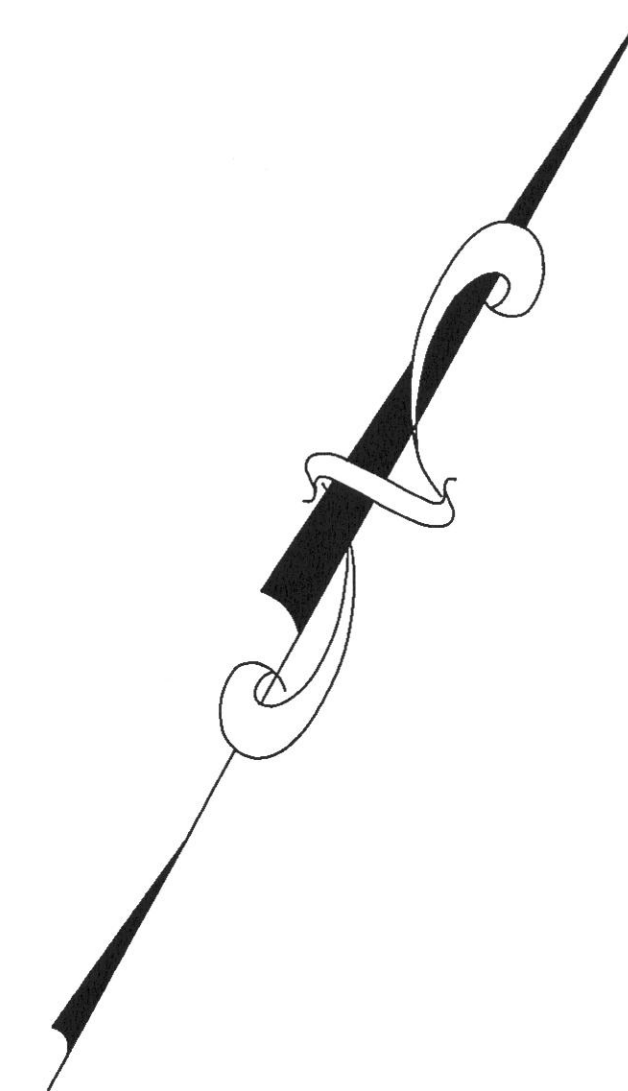
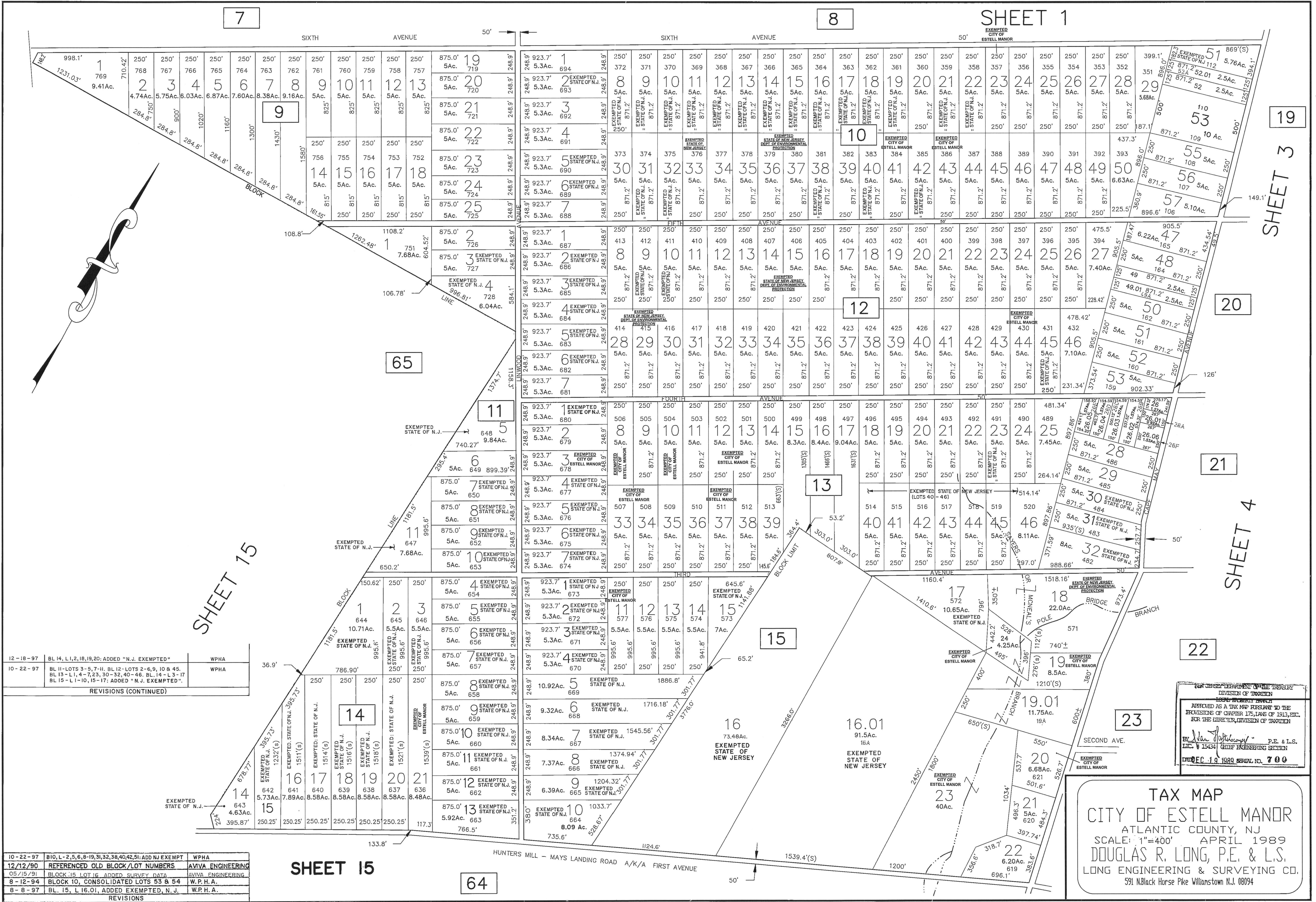


SHEET 1



DATE	DESCRIPTION	BY
12-18-97	BL 14, L 1, 2, 18, 19, 20; ADDED "N.J. EXEMPTED"	WPHA
10-22-97	BL 11- LOTS 3-5, 7-11, BL 12- LOTS 2-6, 9, 10 & 45, BL 13- L 1, 4-7, 23, 30-32, 40-46, BL 14- L 3-17, BL 15- L 1-10, 15-17; ADDED "N.J. EXEMPTED"	WPHA

REVISIONS (CONTINUED)

DATE	DESCRIPTION	BY
10-22-97	B10, L- 2, 5, 6, 8-19, 31, 32, 38, 40, 42, 51; ADD NJ EXEMPT	WPHA
12/12/90	REFERENCED OLD BLOCK/LOT NUMBERS	AVIVA ENGINEERING
05/15/91	BLOCK 15 LOT 16 ADDED SURVEY DATA	AVIVA ENGINEERING
8-12-94	BLOCK 10, CONSOLIDATED LOTS 53 & 54	W.P.H.A.
8-8-97	BL. 15, L 16.01, ADDED EXEMPTED, N.J.	W.P.H.A.

REVISIONS

SHEET 15

64

FOR THE DEPARTMENT OF THE TREASURY
DIVISION OF TAXATION
LOCAL EXEMPTED BLOCK
APPROVED AS A TAX MAP PURSUANT TO THE
PROVISIONS OF CHAPTER 175, LAWS OF 1913, ETC.
FOR THE DIRECTOR, DIVISION OF TAXATION
Ed. Van Dusen P.E. & L.S.
LIC. # 15434 (SEAL) GHEP ENGINEERING SECTION
DATE: 10-19-89 SERIAL NO. 700

TAX MAP
CITY OF ESTELL MANOR
ATLANTIC COUNTY, NJ
SCALE: 1"=400'
APRIL 1989
DOUGLAS R. LONG, P.E. & L.S.
LONG ENGINEERING & SURVEYING CO.
591 N. Black Horse Pike Willamstown N.J. 08094