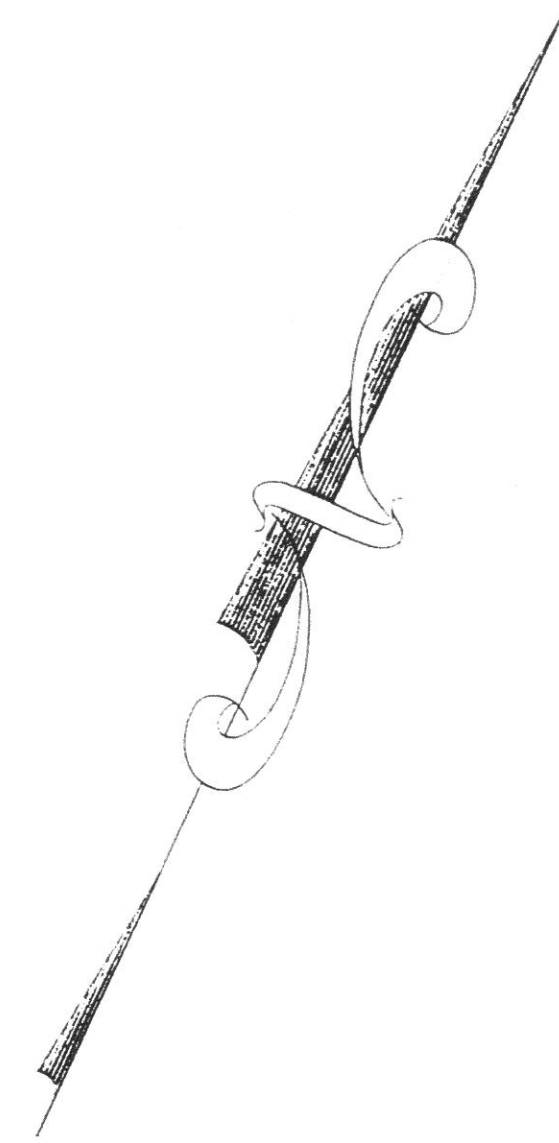
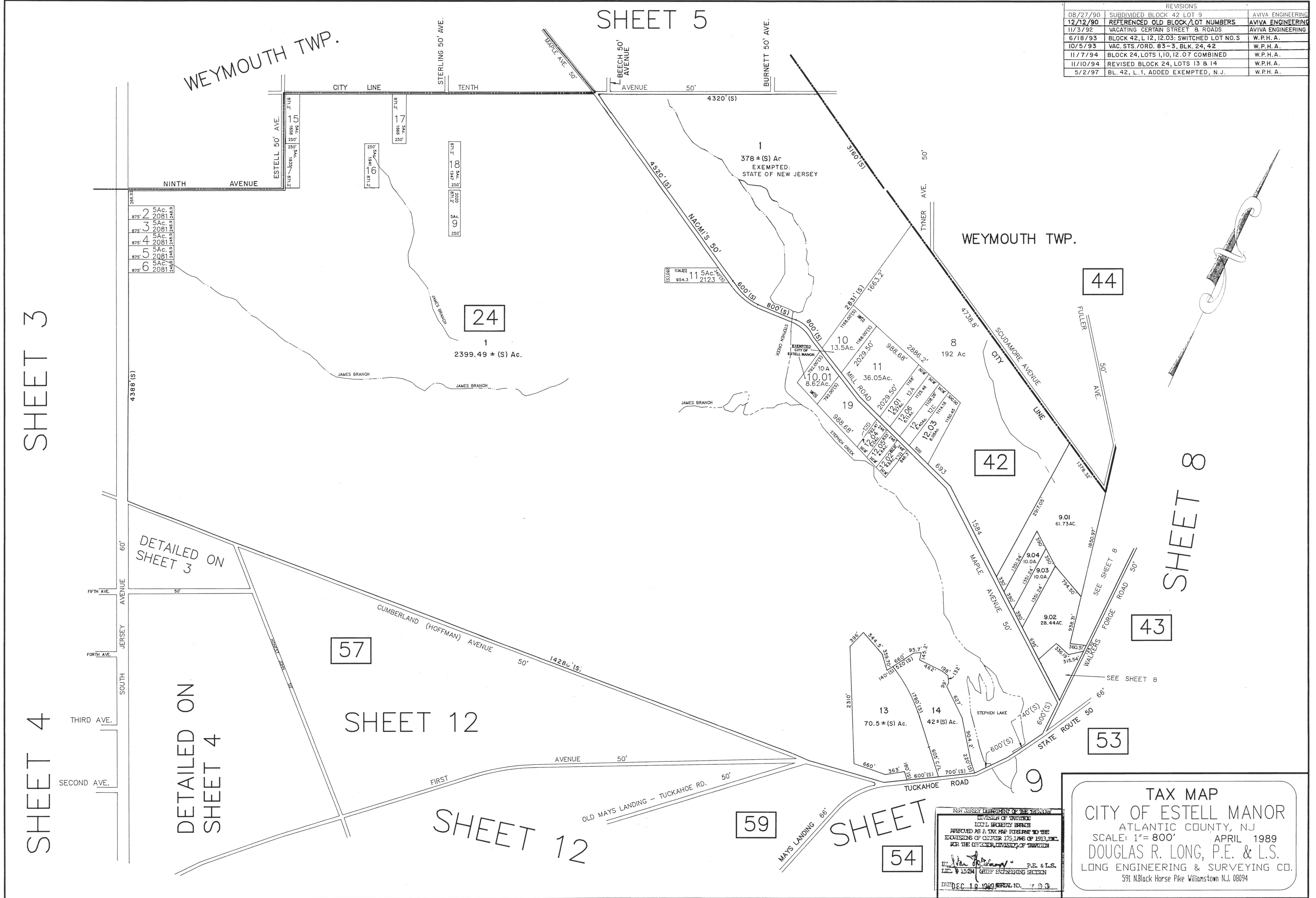


REVISIONS		
08/27/90	SUBDIVIDED BLOCK 42 LOT 9	AVIVA ENGINEERING
12/12/90	REFERENCED OLD BLOCK/LOT NUMBERS	AVIVA ENGINEERING
11/3/92	VACATING CERTAIN STREET & ROADS	AVIVA ENGINEERING
6/18/93	BLOCK 42, L. 12, 12.03; SWITCHED LOT NO. S	W.P.H.A.
10/5/93	VAC. STS./ORD. 83-3, BLK. 24, 42	W.P.H.A.
11/7/94	BLOCK 24, LOTS 1, 10, 12.07 COMBINED	W.P.H.A.
11/10/94	REVISED BLOCK 24, LOTS 13 & 14	W.P.H.A.
5/2/97	BL. 42, L. 1, ADDED EXEMPTED, N.J.	W.P.H.A.



2	5Ac
3	5Ac
4	5Ac
5	5Ac
6	5Ac

15	250'
16	250'
17	250'

18	250'
19	250'

20	250'
21	250'

22	250'
23	250'

24	250'
25	250'

26	250'
27	250'

28	250'
29	250'

30	250'
31	250'

32	250'
33	250'

34	250'
35	250'

36	250'
37	250'

38	250'
39	250'

40	250'
41	250'

42	250'
43	250'

44	250'
45	250'

46	250'
47	250'

48	250'
49	250'

50	250'
51	250'

52	250'
53	250'

54	250'
55	250'

56	250'
57	250'

58	250'
59	250'

60	250'
61	250'

62	250'
63	250'

64	250'
65	250'

66	250'
67	250'

68	250'
69	250'

NEW JERSEY DEPARTMENT OF TREASURY
 DIVISION OF TAXATION
 LOCAL PROPERTY TAXES
 REFERENCED AS A TAX MAP PURSUANT TO THE
 PROVISIONS OF CHAPTER 175, LWS OF 1913, ETC.
 FOR THE MUNICIPAL DIVISION OF TAXATION
 BY: *W. R. Long* P.E. & L.S.
 DATE: 12/15/84
 DEC 15 1984 SERIAL NO. 7 0 3

TAX MAP
 CITY OF ESTELL MANOR
 ATLANTIC COUNTY, NJ
 SCALE: 1" = 800' APRIL 1989
 DOUGLAS R. LONG, P.E. & L.S.
 LONG ENGINEERING & SURVEYING CO.
 591 N. Black Horse Pike Williamstown N.J. 08094