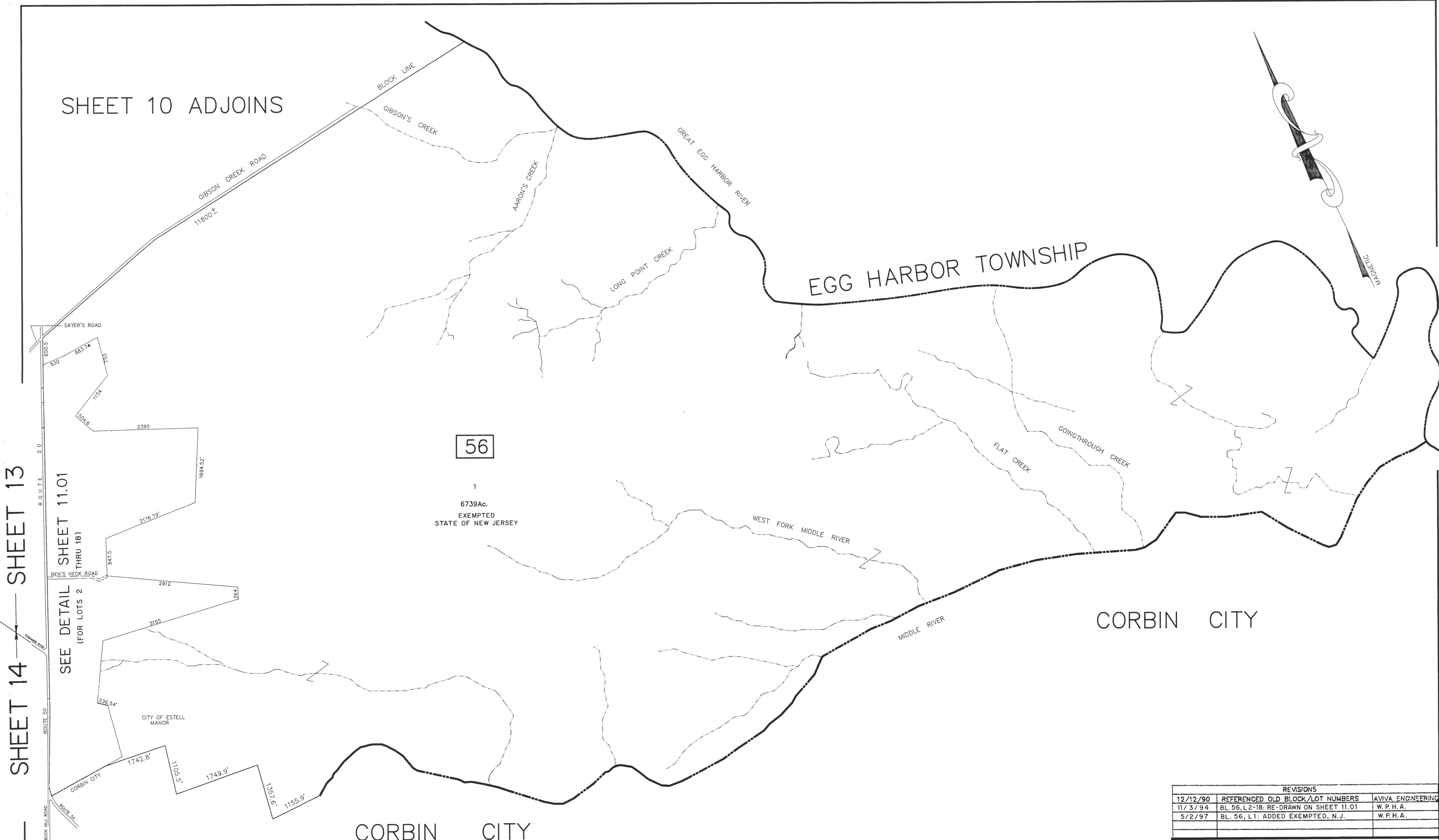
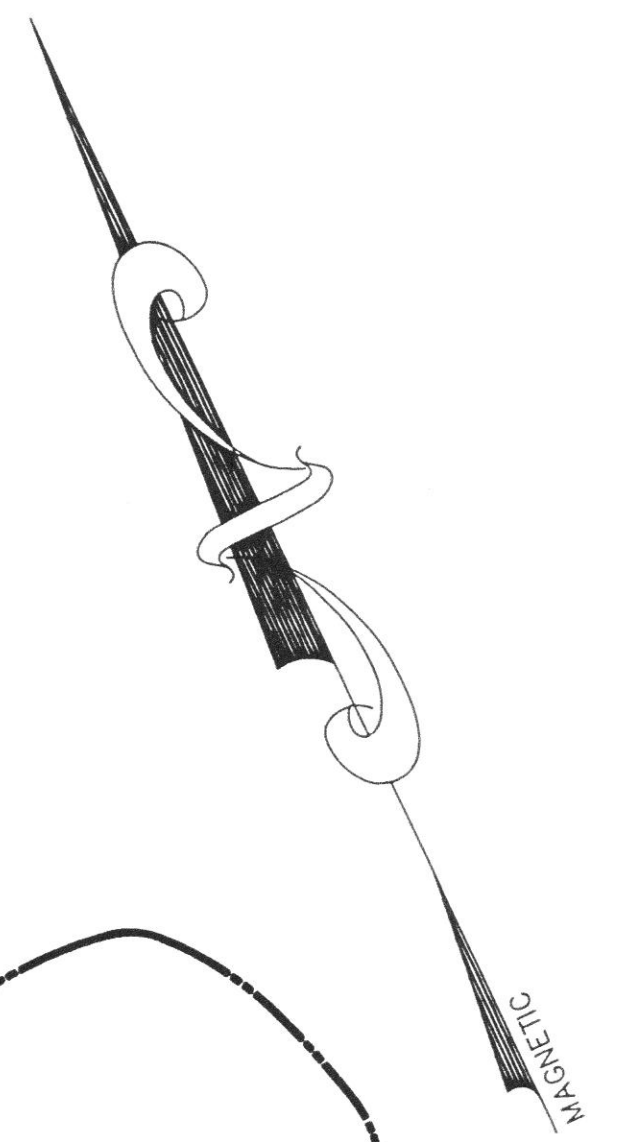


SHEET 10 ADJOINS



SHEET 14 SHEET 13 SHEET 11.01 (FOR LOTS 2 THRU 18)

NOTE:
THE AREAS, BOUNDARIES AND DIMENSIONS, SHOWN ON THIS TAX MAP,
ARE DERIVED FROM GROUND SURVEYS, AERIAL SURVEYS, AND RECORDED PLANS, MAPS, DEEDS, WILLS,
AND ARE TO BE USED FOR ASSESSMENT PURPOSES ONLY.

NEW JERSEY DEPARTMENT OF THE TREASURY
DIVISION OF TAXATION
LOCAL EXEMPTION BRANCH
APPROVED AS A TAX MAP PURSUANT TO THE
PROVISIONS OF CHAPTER 175, LAWS OF 1913, ETC.,
BY THE ENGINEER, DIVISION OF TAXATION
BY: *Walter J. Long* P.E. & L.S.
LIC. # 15434 CHIEF ENGINEERING SENIOR
DATE: APR 1 1989 SERIAL NO. 7 89

REVISIONS		
12/12/90	REFERENCED OLD BLOCK/LOT NUMBERS	AVIVA ENGINEERING
11/3/94	BL. 56, L2-18: RE-DRAWN ON SHEET 11.01	W. P. H. A.
5/2/97	BL. 56, L1: ADDED EXEMPTED, N.J.	W. P. H. A.

TAX MAP
CITY OF ESTELL MANOR
ATLANTIC COUNTY, NJ
1" = 1000' APRIL 1989
DOUGLAS R. LONG, P.E. & L.S.
LONG ENGINEERING & SURVEYING CO.
591 N. Black Horse Pike Williamstown N.J. 08094