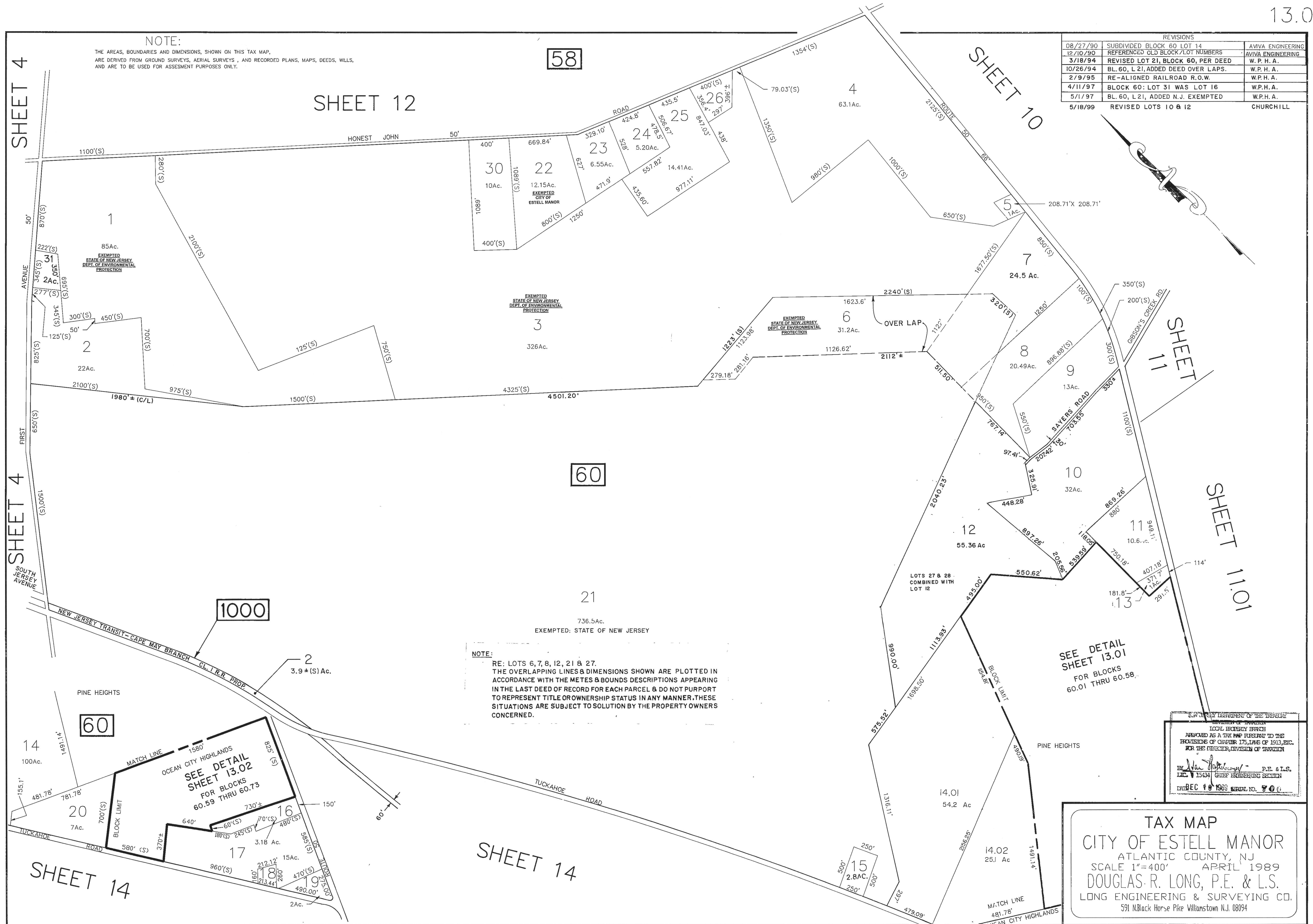


REVISIONS		
08/27/90	SUBDIVIDED BLOCK 60 LOT 14	AMVA ENGINEERING
12/10/90	REFERENCED OLD BLOCK/LOT NUMBERS	AMVA ENGINEERING
3/18/94	REVISED LOT 21, BLOCK 60, PER DEED	W.P.H.A.
10/26/94	BL. 60, L 21, ADDED DEED OVER LAPS.	W.P.H.A.
2/9/95	RE-ALIGNED RAILROAD R.O.W.	W.P.H.A.
4/11/97	BLOCK 60: LOT 31 WAS LOT 16	W.P.H.A.
5/1/97	BL. 60, L 21, ADDED N.J. EXEMPTED	W.P.H.A.
5/18/99	REVISED LOTS 10 & 12	CHURCHILL

NOTE:
THE AREAS, BOUNDARIES AND DIMENSIONS, SHOWN ON THIS TAX MAP,
ARE DERIVED FROM GROUND SURVEYS, AERIAL SURVEYS, AND RECORDED PLANS, MAPS, DEEDS, WILLS,
AND ARE TO BE USED FOR ASSESSMENT PURPOSES ONLY.



NOTE:
RE: LOTS 6, 7, 8, 12, 21 & 27.
THE OVERLAPPING LINES & DIMENSIONS SHOWN ARE PLOTTED IN
ACCORDANCE WITH THE METES & BOUNDS DESCRIPTIONS APPEARING
IN THE LAST DEED OF RECORD FOR EACH PARCEL & DO NOT PURPORT
TO REPRESENT TITLE OR OWNERSHIP STATUS IN ANY MANNER, THESE
SITUATIONS ARE SUBJECT TO SOLUTION BY THE PROPERTY OWNERS
CONCERNED.

SEE DETAIL
SHEET 13.01
FOR BLOCKS
60.01 THRU 60.58.

STATE OF NEW JERSEY
DEPARTMENT OF TREASURY
DIVISION OF PROPERTY
LOCAL EXEMPTION SERVICE
APPROVED AS A TAX MAP PURSUANT TO THE
PROVISIONS OF CHAPTER 175, LEGISLATIVE
ACT 1983, FOR THE DIRECTOR, DIVISION OF TAXATION
BY Douglas R. Long, P.E. & L.S.
LIC. # 15434 CIVIL ENGINEERING SECTION
ENR/BEC # 1568 SERIAL NO. 700

TAX MAP
CITY OF ESTELL MANOR
ATLANTIC COUNTY, NJ
SCALE 1"=400' APRIL 1989
DOUGLAS R. LONG, P.E. & L.S.
LONG ENGINEERING & SURVEYING CO.
591 N. Black Horse Pike Williamstown NJ, 08094