

PINE HEIGHTS ATLANTIC COUNTY, N.J.

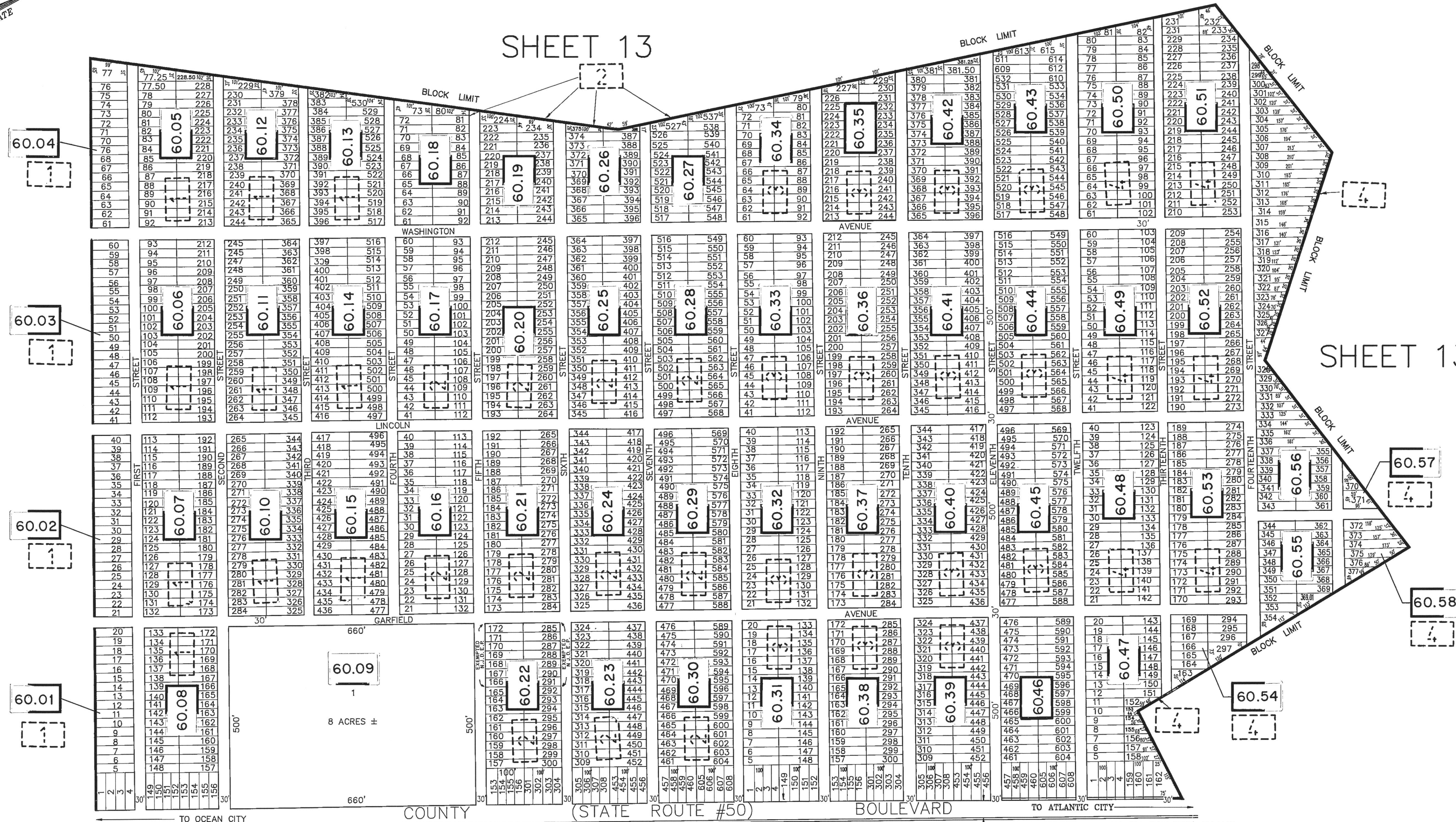
NOTE: ALL REGULAR LOTS ARE 25'X100'
ALL STREETS ARE SHOWN AS 30'

SHEET 13

MAG-DATE

SHEET 13.02

SHEET 13



NOTE:
THE AREAS, BOUNDARIES AND DIMENSIONS, SHOWN ON THIS TAX MAP,
ARE DERIVED FROM GROUND SURVEYS, AERIAL SURVEYS, AND RECORDED PLANS, MAPS, DEEDS, WILLS,
AND ARE TO BE USED FOR ASSESSMENT PURPOSES ONLY.

NOTE: STATE ROUTE #50 (50 FEET WIDE) ON MAP
OF PINE HEIGHTS
66 FEET WIDE ON MAP OF ROUTE #50

REVISIONS		
12/10/90	REFERENCED OLD BLOCK / LOT NUMBERS	AVIVA ENGINEERING
11/1/94	BL. 60.01 THRU 60.58 WAS BL. 1.01 THRU 5.01	W.P.H.A.
3/9/98	BL. 60.22, L. 166-172, 285-291, EXEMPT. / N.J.D.E.P.	W.P.H.A.

SHEET 11.01

NEW JERSEY DEPARTMENT OF TREASURY
DIVISION OF TAXATION
LOCAL PROPERTY BRANCH
APPROVED AS A TAX MAP PURSUANT TO THE
PROVISIONS OF CHAPTER 175, LAWS OF 1913, ETC.
BY THE DIRECTOR, DIVISION OF TAXATION

BY *[Signature]* P.E. & L.S.
INC. # 15434 CIVIL ENGINEERING SECTION
EX-DEC 19 1989 SERIAL NO. 700

TAX MAP
CITY OF ESTELL MANOR
ATLANTIC COUNTY, NJ
SCALE: 1"=150' APRIL 1989
DOUGLAS R. LONG, P.E. & L.S.
LONG ENGINEERING & SURVEYING CO.
591 N.Black Horse Pike Williamstown N.J. 08094