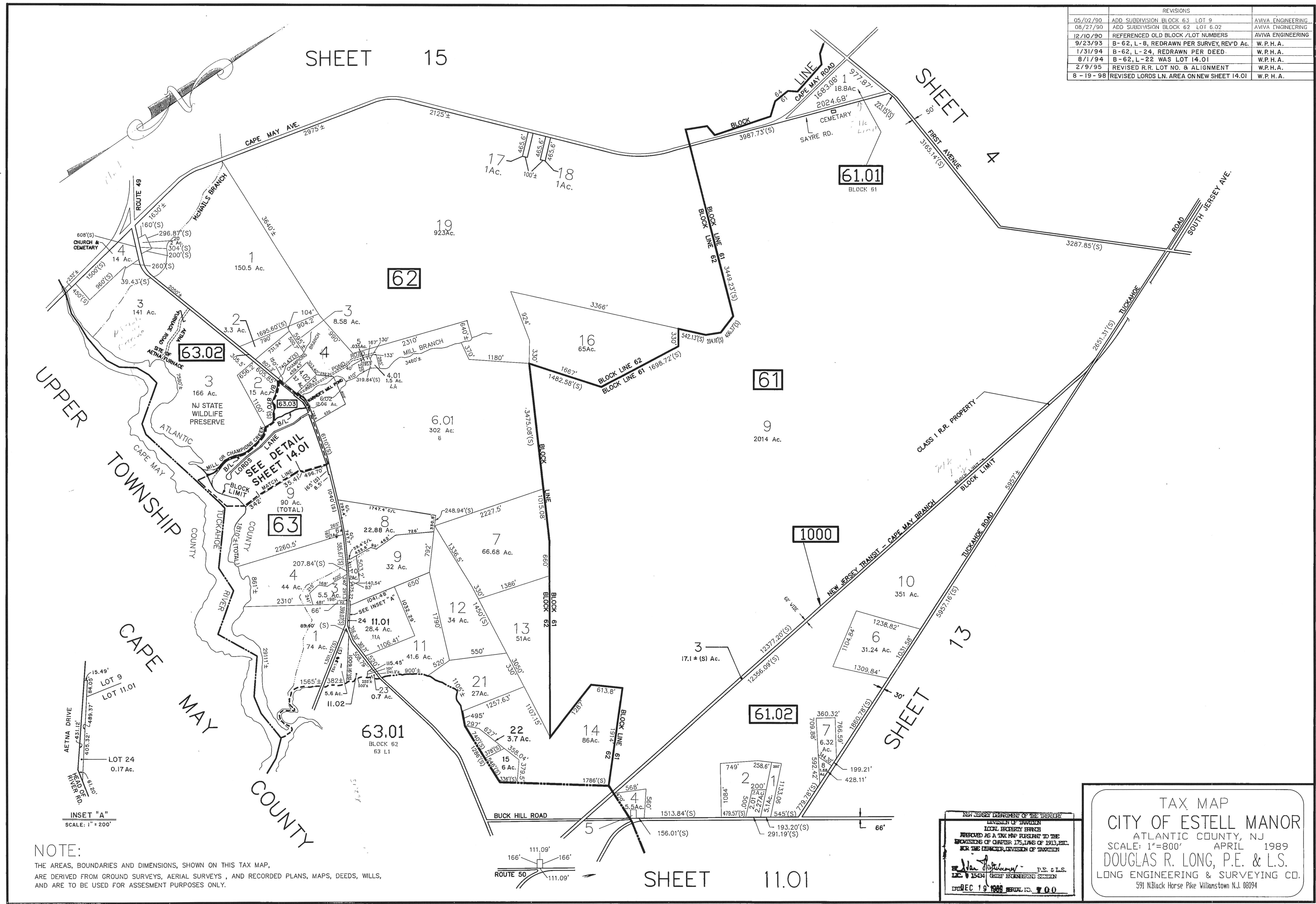
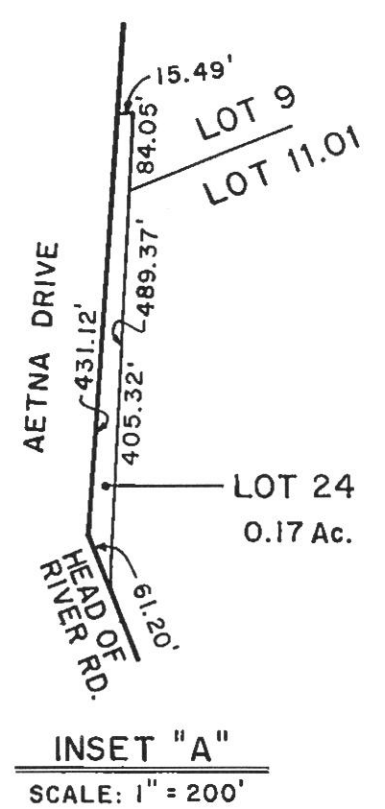


REVISIONS		
05/02/90	ADD SUBDIVISION BLOCK 63 LOT 9	AVVA ENGINEERING
08/27/90	ADD SUBDIVISION BLOCK 62 LOT 6.02	AVVA ENGINEERING
12/10/90	REFERENCED OLD BLOCK /LOT NUMBERS	AVVA ENGINEERING
9/23/93	B-62, L-8, REDRAWN PER SURVEY, REV'D AC.	W. P. H. A.
1/31/94	B-62, L-24, REDRAWN PER DEED	W. P. H. A.
8/1/94	B-62, L-22 WAS LOT 14.01	W. P. H. A.
2/9/95	REVISED R.R. LOT NO. & ALIGNMENT	W. P. H. A.
8-19-98	REVISED LORDS LN. AREA ON NEW SHEET 14.01	W. P. H. A.



NOTE:
 THE AREAS, BOUNDARIES AND DIMENSIONS, SHOWN ON THIS TAX MAP,
 ARE DERIVED FROM GROUND SURVEYS, AERIAL SURVEYS, AND RECORDED PLANS, MAPS, DEEDS, WILLS,
 AND ARE TO BE USED FOR ASSESSMENT PURPOSES ONLY.



NEW JERSEY DEPARTMENT OF THE TREASURY
 DIVISION OF TAXATION
 LOCAL PROPERTY TAX MAP
 PREPARED AS A TAX MAP PURSUANT TO THE
 PROVISIONS OF CHAPTER 175, L.A.S. OF 1913, ETC.
 FOR THE DIRECTOR, DIVISION OF TAXATION
 Douglas R. Long, P.E. & L.S.
 LONG ENGINEERING & SURVEYING CO.
 REC 19 1988 REVISED 14.01

TAX MAP
 CITY OF ESTELL MANOR
 ATLANTIC COUNTY, NJ
 SCALE: 1"=800' APRIL 1989
 DOUGLAS R. LONG, P.E. & L.S.
 LONG ENGINEERING & SURVEYING CO.
 591 N. Black Horse Pike Williston NJ 08094