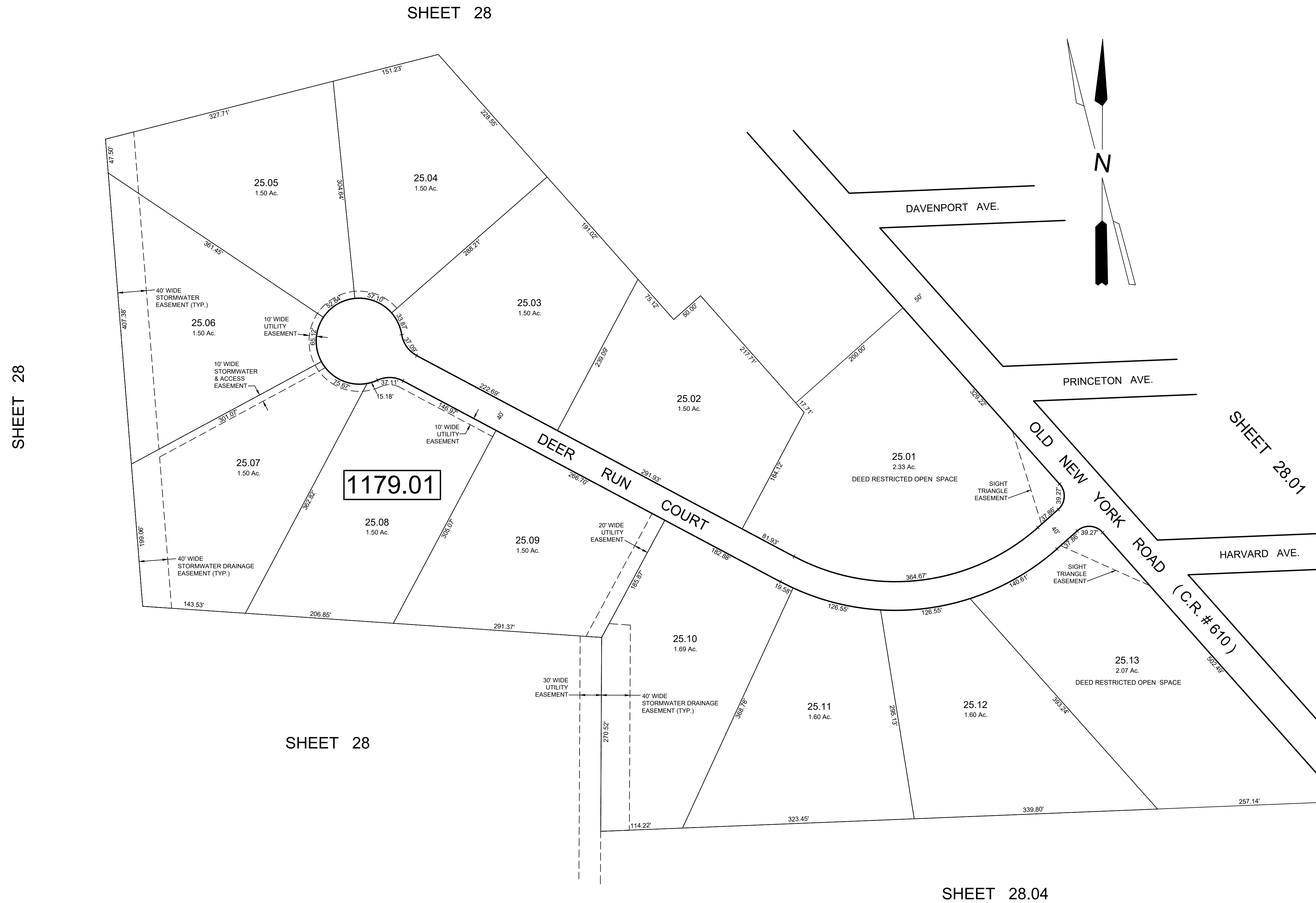


REVISIONS		
DATE	NAME	NO.



"ESTATES AT DEER RUN"

**TAX MAP**  
**TOWNSHIP OF GALLOWAY**  
**ATLANTIC COUNTY, NEW JERSEY**  
 SCALE: 1" = 80'      AUGUST 2008

---

**DIXON ASSOCIATES**  
 313 E. JIMMIE LEEDS RD.,  
 GALLOWAY, N.J. 08205

---

**SAMUEL S. PREVITERA, P.L.S.**  
 N.J. LIC. No. 38976  
 26 NORTH ROUTE 73, SUITE 200  
 CEDAR BROOK, N.J. 08018

THIS SHEET HAS BEEN DRAWN USING COMPUTER AIDED DRAFTING / DESIGN (CAD/D)  
 AND WAS DONE UNDER THE SUPERVISION OF SAMUEL S. PREVITERA, P.L.S., NEW JERSEY  
 PROFESSIONAL LAND SURVEYOR LICENSE NO. 38976, AND DATED DECEMBER 31, 2006.