

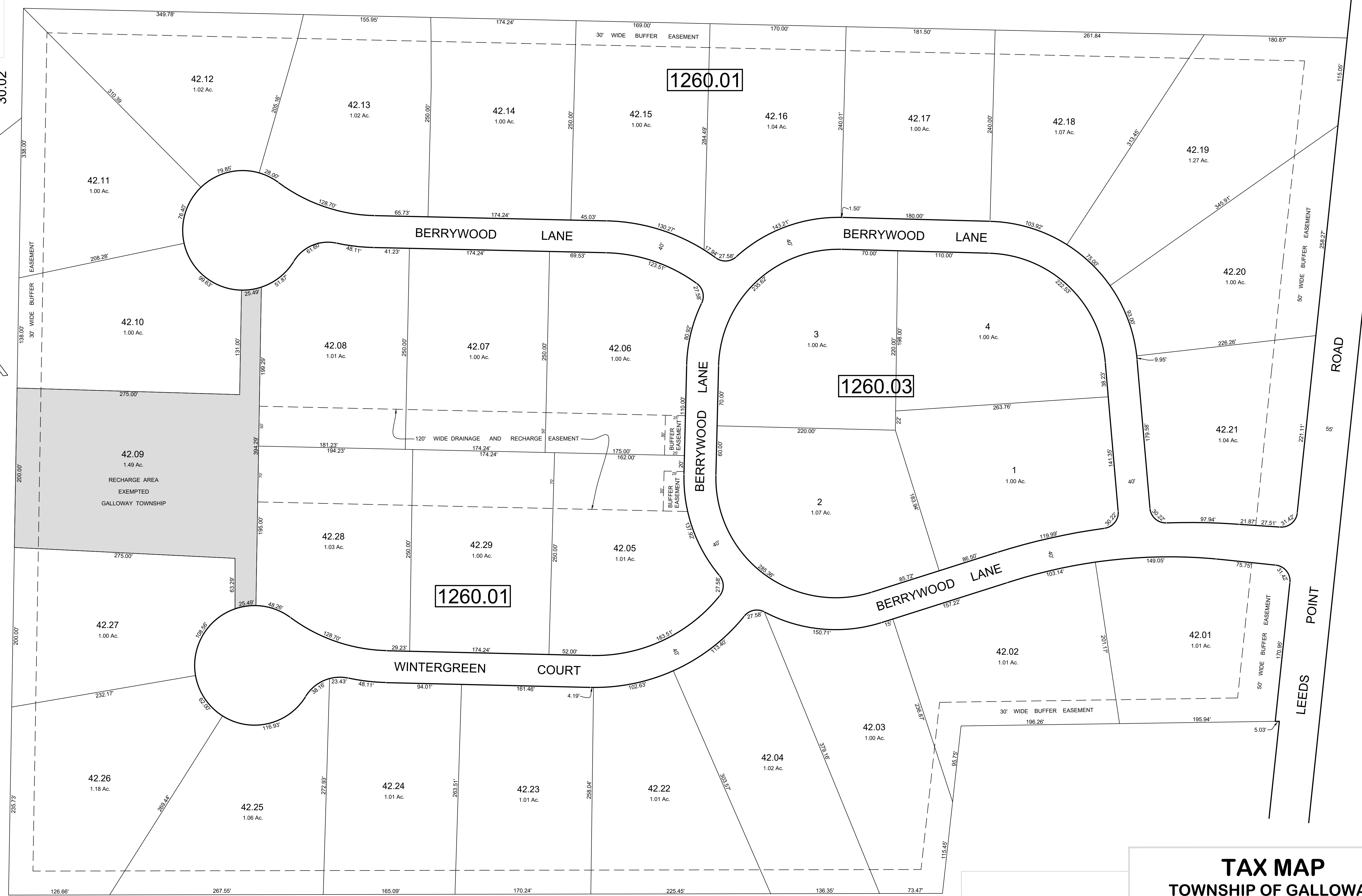
REVISIONS		
DATE	NAME	NO.
8-15-19	J.Boney NJ Lic #31264	1

SHEET 30.02

SHEET 30.02

SHEET 30

SHEET 30



SHEET 30

TAX MAP
TOWNSHIP OF GALLOWAY
ATLANTIC COUNTY, NEW JERSEY
 SCALE: 1" = 60' JANUARY 2007
SAMUEL S. PREVITERA, P.L.S.
 N.J. LIC. No. 38976
 26 NORTH ROUTE 73, SUITE 200
 CEDAR BROOK, N.J. 08018

THIS SHEET HAS BEEN DRAWN USING COMPUTER AIDED DRAFTING / DESIGN (CAD/D) AND WAS DONE UNDER THE SUPERVISION OF SAMUEL S. PREVITERA, P.L.S., NEW JERSEY PROFESSIONAL LAND SURVEYOR LICENSE NO. 38976, AND DATED DECEMBER 31, 2006.