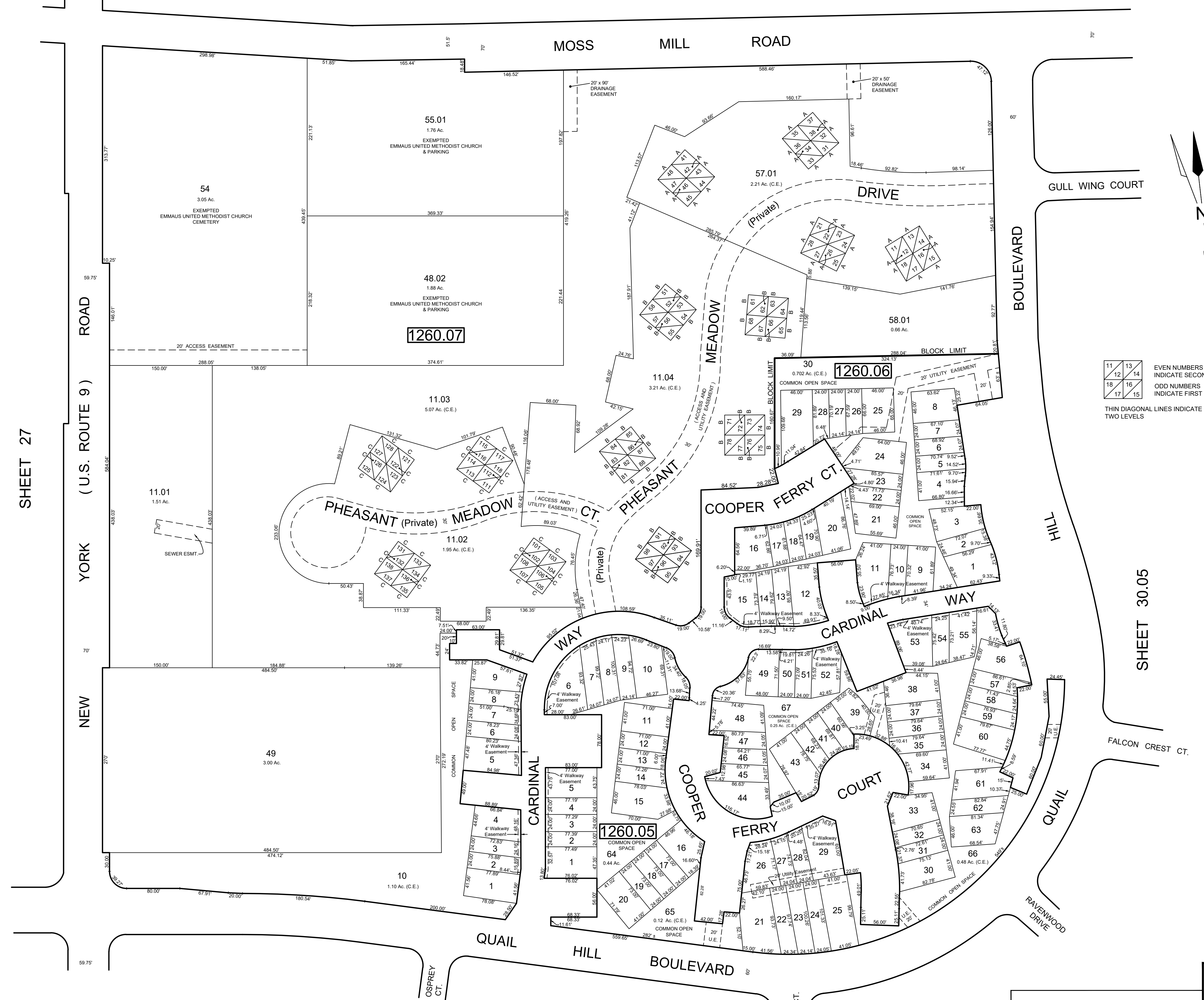


REVISIONS		
DATE	NAME	NO.
Aug. 2008	Dixon Assoc.	1
8-15-19	J.Boney NJ Lic #31264	2

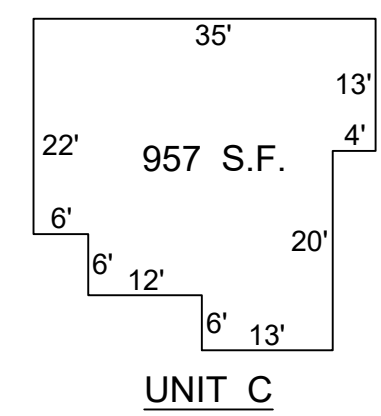
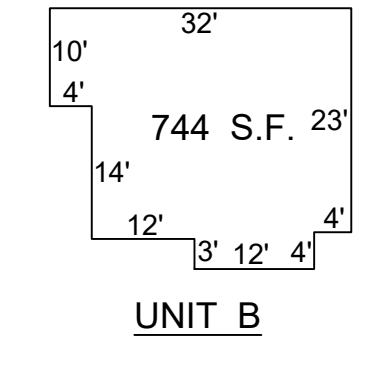
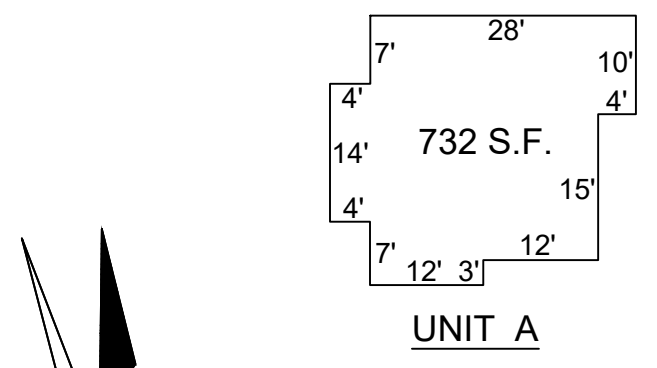
SHEET 28.02



SHEET 27

SHEET 30.05

SHEET 30.05



11	13
12	14
18	16
17	15

 EVEN NUMBERS INDICATE SECOND FLOOR
 ODD NUMBERS INDICATE FIRST FLOOR
 THIN DIAGONAL LINES INDICATE TWO LEVELS

Scale: 1" = 20'

TAX MAP
 TOWNSHIP OF GALLOWAY
 ATLANTIC COUNTY, NEW JERSEY
 SCALE: 1" = 80' JANUARY 2007
SAMUEL S. PREVITERA, P.L.S.
 N.J. LIC. No. 38976
 26 NORTH ROUTE 73, SUITE 200
 CEDAR BROOK, N.J. 08018

THIS SHEET HAS BEEN DRAWN USING COMPUTER AIDED DRAFTING / DESIGN (CAD/D) AND WAS DONE UNDER THE SUPERVISION OF SAMUEL S. PREVITERA, P.L.S., NEW JERSEY PROFESSIONAL LAND SURVEYOR LICENSE NO. 38976, AND DATED DECEMBER 31, 2006.