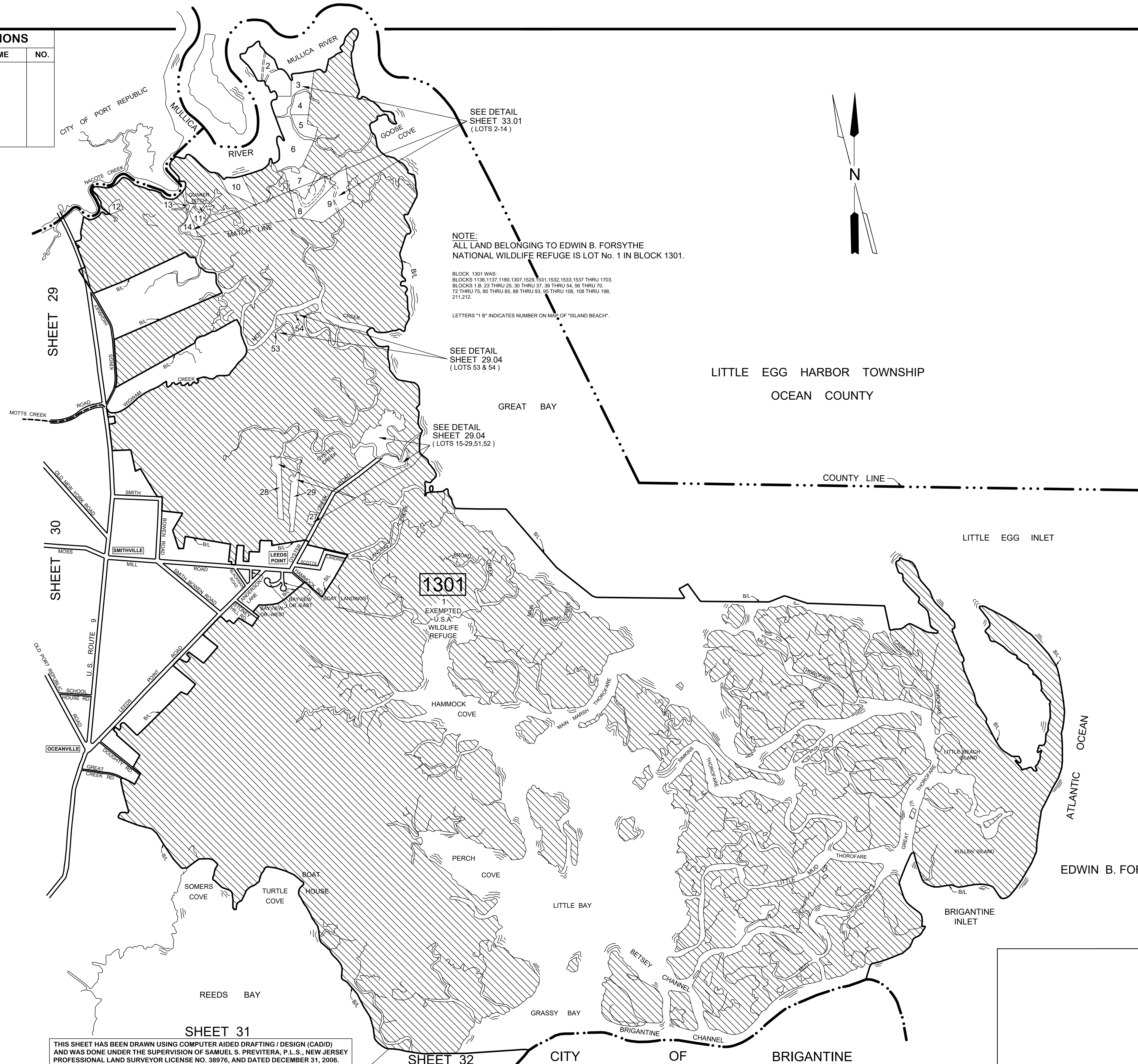


REVISIONS		
DATE	NAME	NO.



SEE DETAIL SHEET 33.01 (LOTS 2-14)

NOTE: ALL LAND BELONGING TO EDWIN B. FORSYTHE NATIONAL WILDLIFE REFUGE IS LOT No. 1 IN BLOCK 1301.

BLOCK 1301 WAS:
BLOCKS 1196, 1137, 1180, 1307, 1528, 1531, 1532, 1533, 1537 THRU 1703.
BLOCKS 1 B, 23 THRU 25, 30 THRU 37, 39 THRU 54, 56 THRU 70,
72 THRU 75, 80 THRU 85, 88 THRU 93, 95 THRU 106, 108 THRU 198,
211, 212.
LETTERS "1 B" INDICATES NUMBER ON MAP OF "ISLAND BEACH".

SEE DETAIL SHEET 29.04 (LOTS 53 & 54)

SEE DETAIL SHEET 29.04 (LOTS 15-29, 51, 52)

LITTLE EGG HARBOR TOWNSHIP
OCEAN COUNTY

COUNTY LINE

LITTLE EGG INLET

1301

EXEMPTED
"U.S.A."
WILDLIFE
REFUGE

EDWIN B. FORSYTHE NATIONAL WILDLIFE REFUGE (EXEMPTED)
(19,382 ACRES)

TAX MAP
TOWNSHIP OF GALLOWAY
ATLANTIC COUNTY, NEW JERSEY

SCALE: 1" = 2000' JANUARY 2007

SAMUEL S. PREVITERA, P.L.S.
N.J. LIC. No. 38976

26 NORTH ROUTE 73, SUITE 200
CEDAR BROOK, N.J. 08018

THIS SHEET HAS BEEN DRAWN USING COMPUTER AIDED DRAFTING / DESIGN (CAD/D) AND WAS DONE UNDER THE SUPERVISION OF SAMUEL S. PREVITERA, P.L.S., NEW JERSEY PROFESSIONAL LAND SURVEYOR LICENSE NO. 38976, AND DATED DECEMBER 31, 2006.

SHEET 31

SHEET 32

CITY OF BRIGANTINE