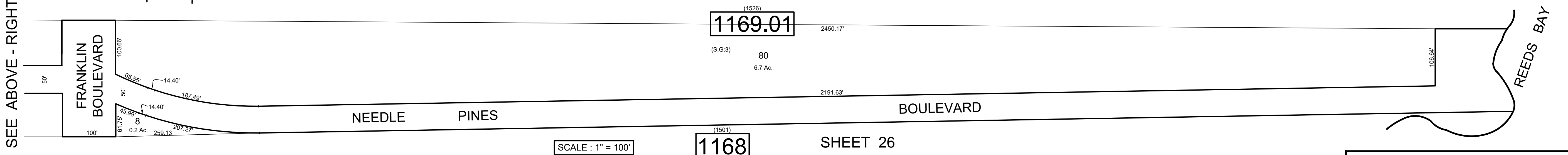
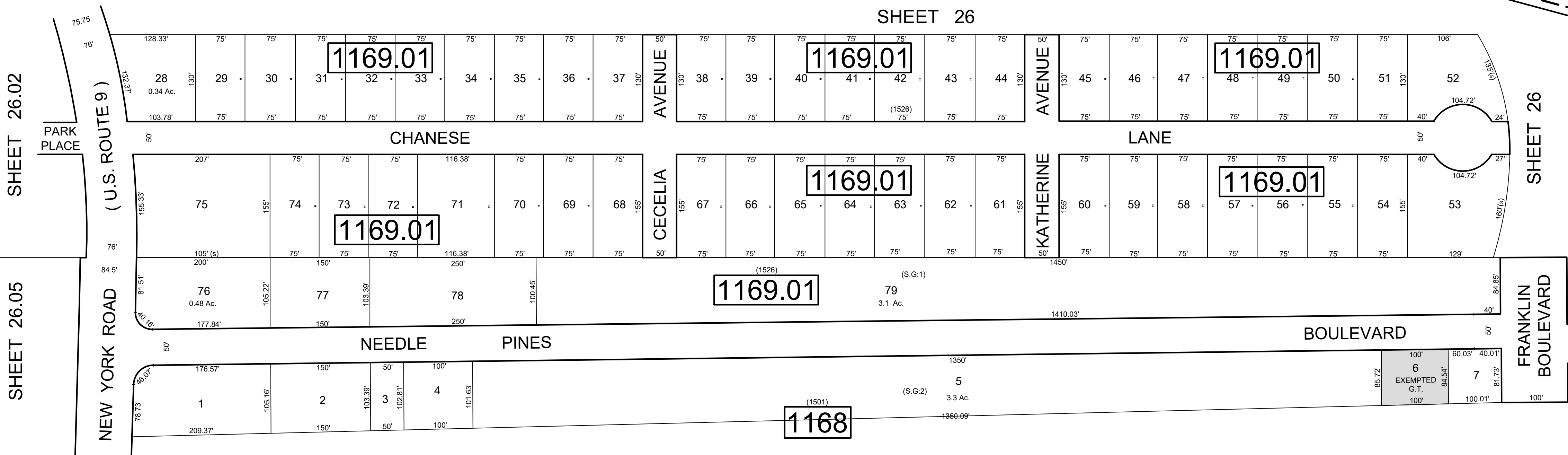
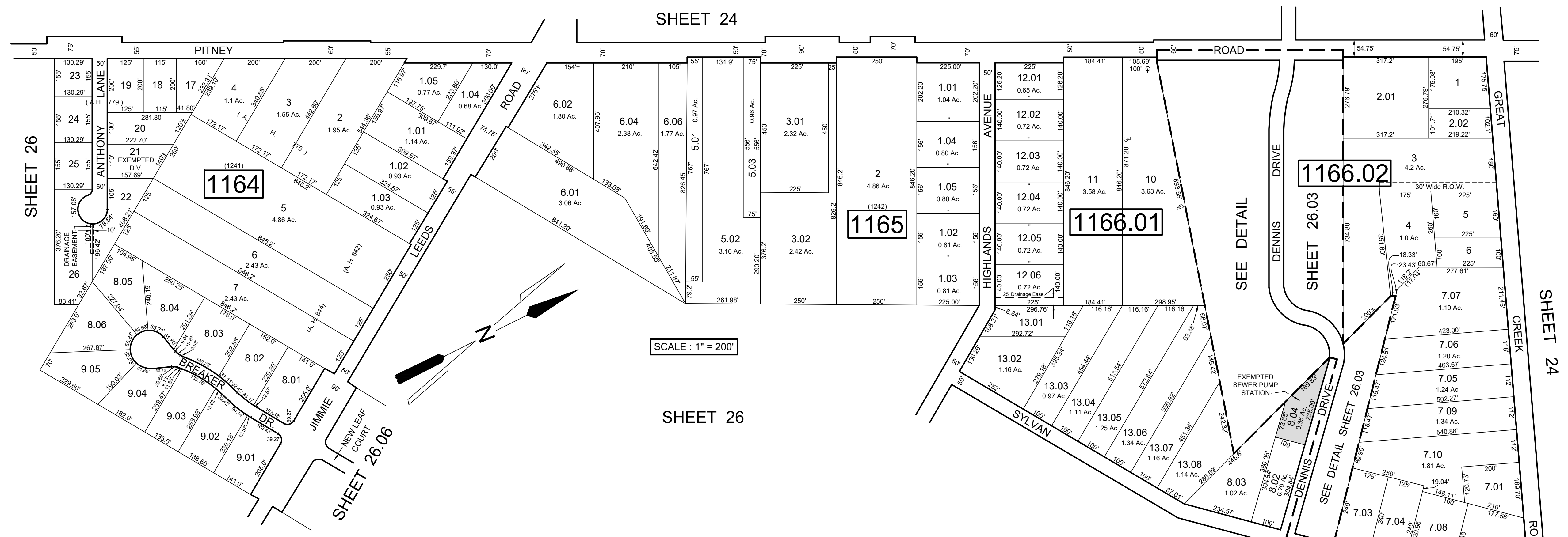


REVISIONS		
DATE	NAME	NO.
Aug. 2008	Dixon Assoc.	1
8-15-19	J.Boney NJ Lic #31264	2



NOTE:
 LETTERS "S.G." INDICATES NUMBER ON MAP OF "SEAVIEW GARDENS" BY N. & F. CORPORATION
 LETTERS "A.H." INDICATES NUMBER ON MAP OF ABSECON HIGHLAND BY GILBERT & O'CALLAGHAN
 LETTERS "G.T." INDICATES GALLOWAY TOWNSHIP OWNED PROPERTY.
 LETTERS "D.V." INDICATES DISABLED VETERAN.

THIS SHEET HAS BEEN DRAWN USING COMPUTER AIDED DRAFTING / DESIGN (CAD/D) AND WAS DONE UNDER THE SUPERVISION OF SAMUEL S. PREVITERA, P.L.S., NEW JERSEY PROFESSIONAL LAND SURVEYOR LICENSE NO. 38976, AND DATED DECEMBER 31, 2006.

TAX MAP
 TOWNSHIP OF GALLOWAY
 ATLANTIC COUNTY, NEW JERSEY
 SCALE: AS NOTED JANUARY 2007
 SAMUEL S. PREVITERA, P.L.S.
 N.J. LIC. No. 38976
 26 NORTH ROUTE 73, SUITE 200
 CEDAR BROOK, N.J. 08018