

REVISIONS		
DATE	NAME	NO.
8-15-19	J.Boney NJ Lic #31264	1

SHEET 27

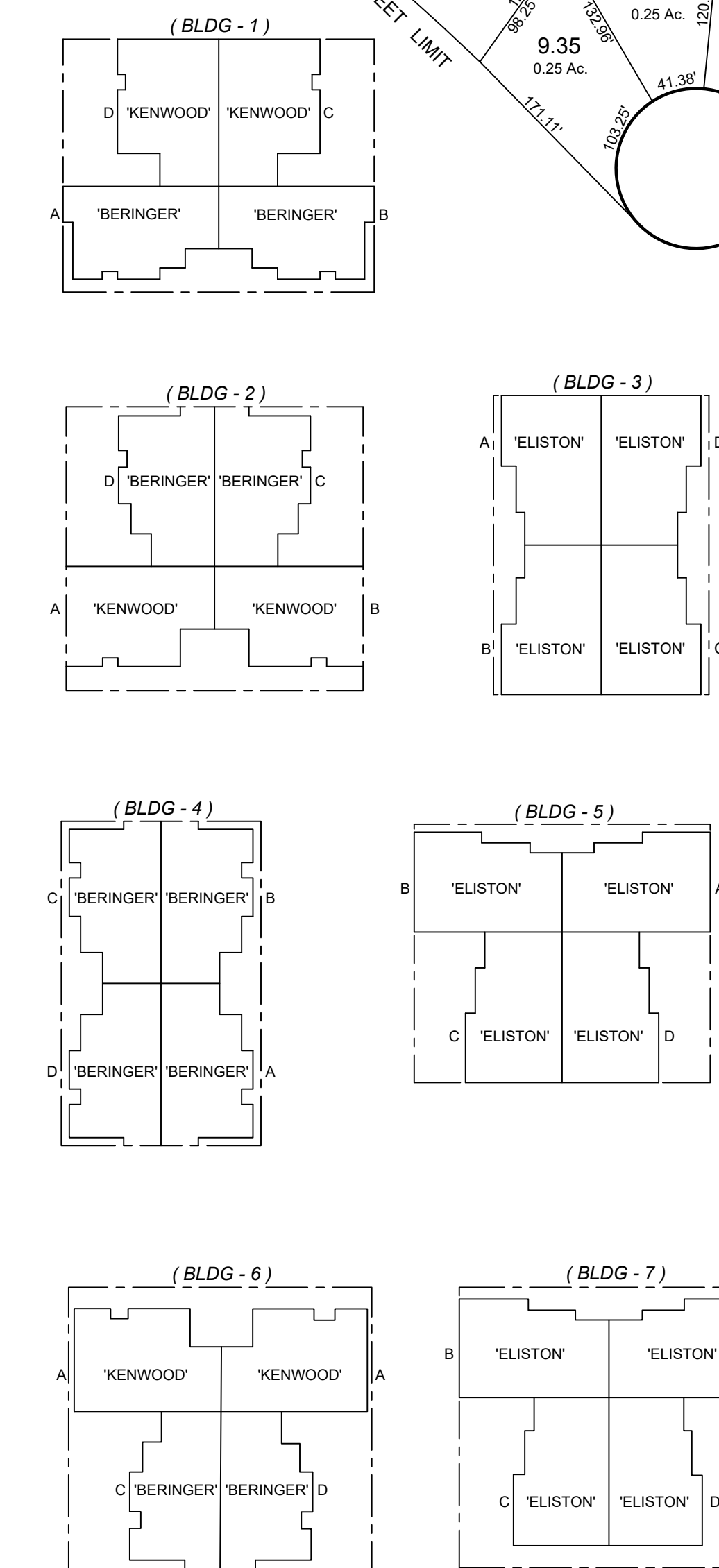
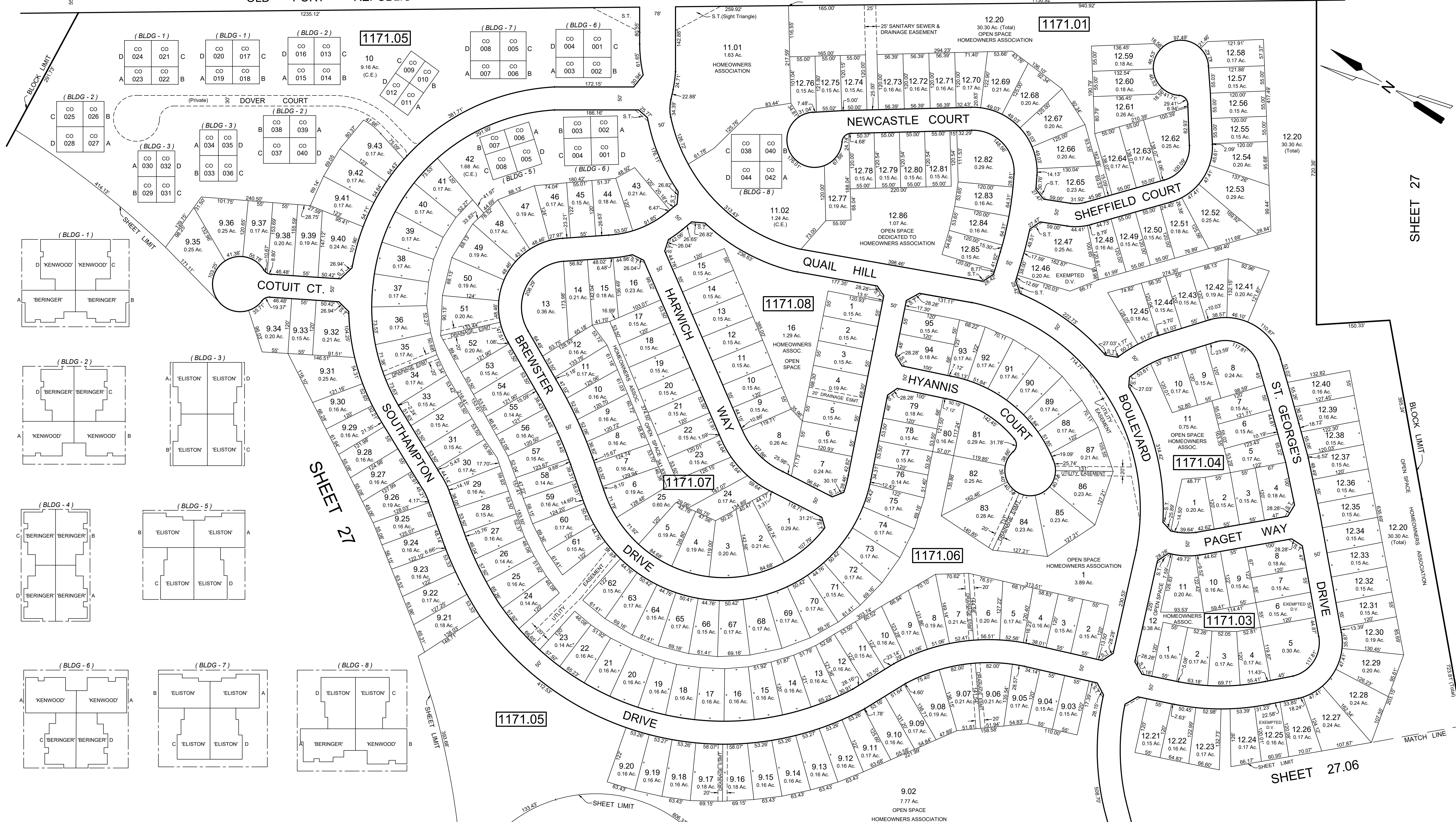
HERITAGE CT.

SHEET 27.01

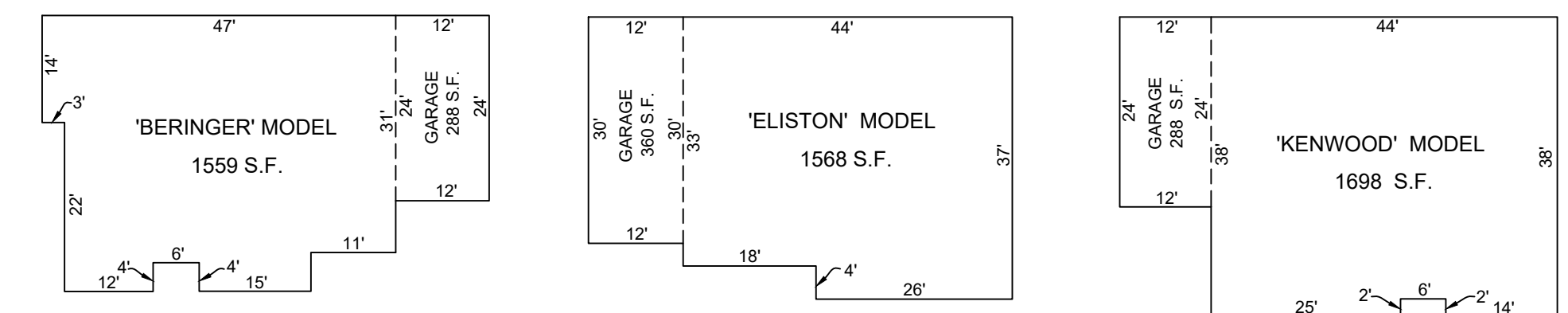
SHEET 27

OLD PORT REPUBLIC ROAD

(TANNERS BROOK ROAD)



"DEVONSHIRE VILLAGE" SECTIONS: 1,2,4,5A,5B,6A,6B



NOTE: LETTERS "D.V." INDICATES DISABLED VETERAN.

SCALE: 1" = 20'

SHEET 27

THIS SHEET HAS BEEN DRAWN USING COMPUTER AIDED DRAFTING / DESIGN (CAD/D) AND WAS DONE UNDER THE SUPERVISION OF SAMUEL S. PREVITERA, P.L.S., NEW JERSEY PROFESSIONAL LAND SURVEYOR LICENSE NO. 38976, AND DATED DECEMBER 31, 2006.

TAX MAP
TOWNSHIP OF GALLOWAY
ATLANTIC COUNTY, NEW JERSEY
 SCALE: 1" = 100' JANUARY 2007
SAMUEL S. PREVITERA, P.L.S.
 N.J. LIC. NO. 38976
 26 NORTH ROUTE 73, SUITE 200
 CEDAR BROOK, N.J. 08018

SHEET 27

SHEET 27.06