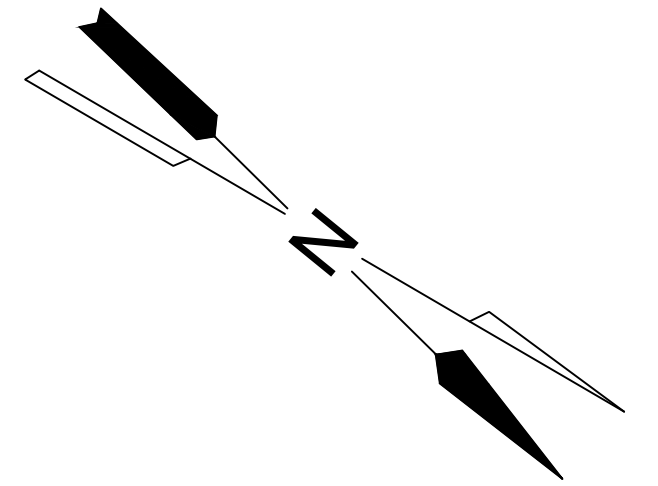
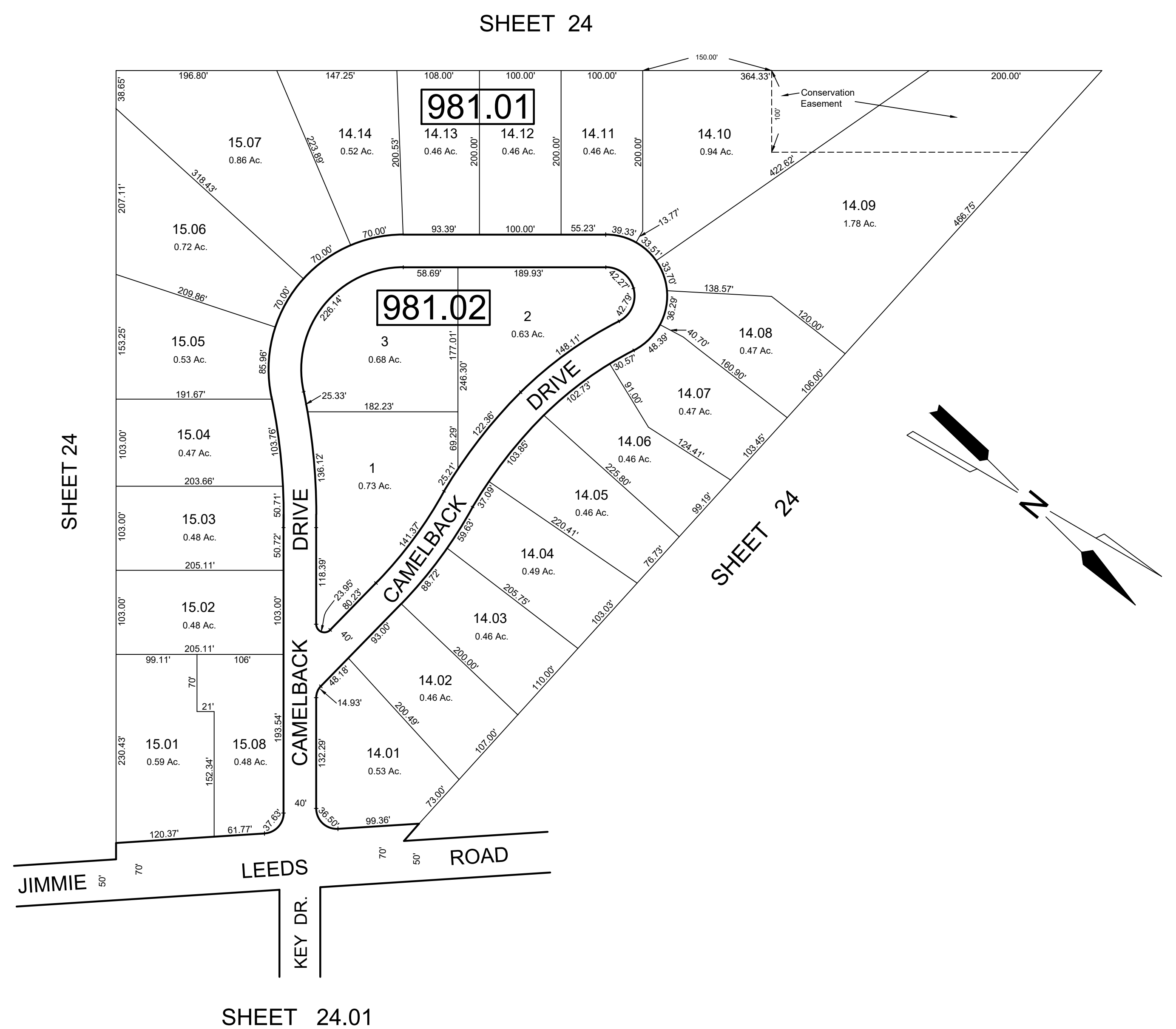
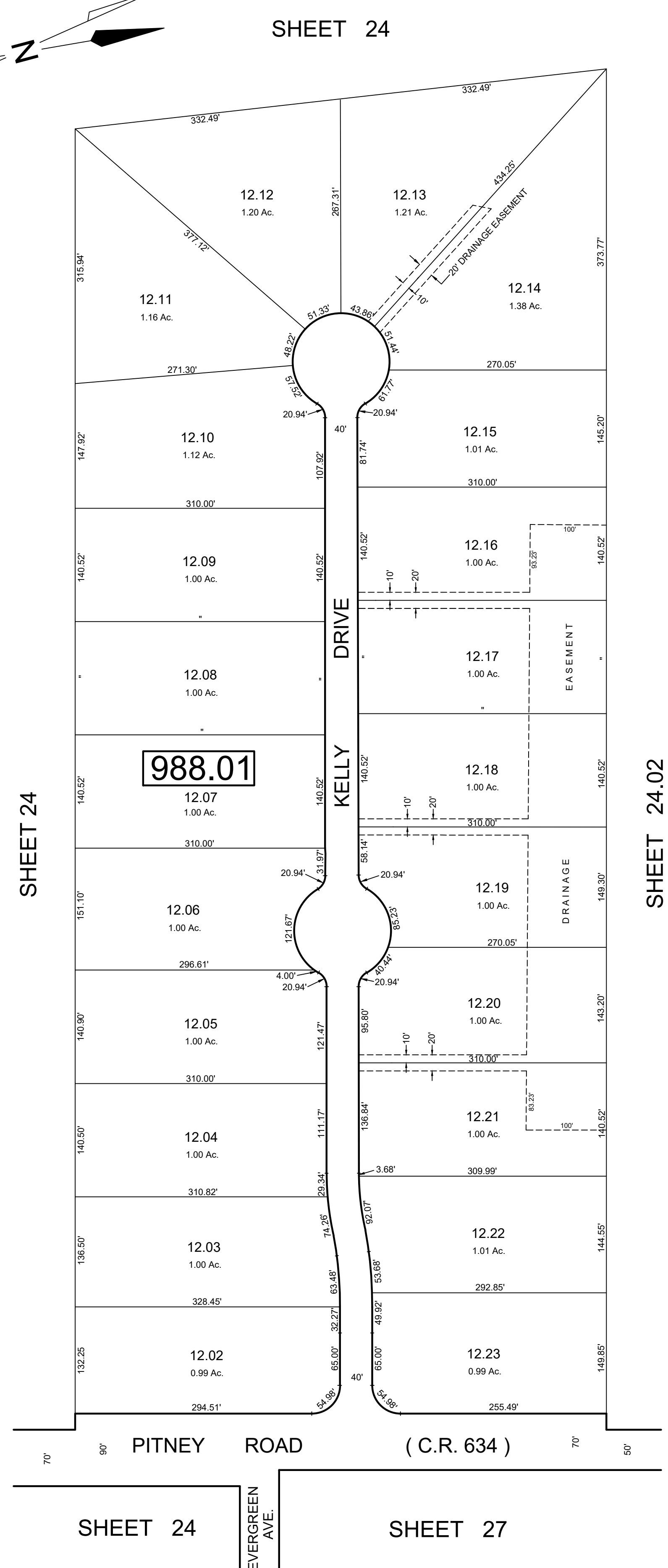
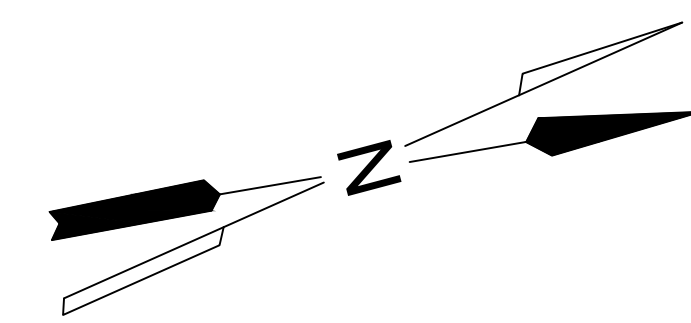


REVISIONS		
DATE	NAME	NO.



**TAX MAP**  
**TOWNSHIP OF GALLOWAY**  
**ATLANTIC COUNTY, NEW JERSEY**  
 SCALE: 1" = 100'      JANUARY 2007  
**SAMUEL S. PREVITERA, P.L.S.**  
 N.J. LIC. No. 38976  
 26 NORTH ROUTE 73, SUITE 200  
 CEDAR BROOK, N.J. 08018

THIS SHEET HAS BEEN DRAWN USING COMPUTER AIDED DRAFTING / DESIGN (CAD/D) AND WAS DONE UNDER THE SUPERVISION OF SAMUEL S. PREVITERA, P.L.S., NEW JERSEY PROFESSIONAL LAND SURVEYOR LICENSE NO. 38976, AND DATED DECEMBER 31, 2006.