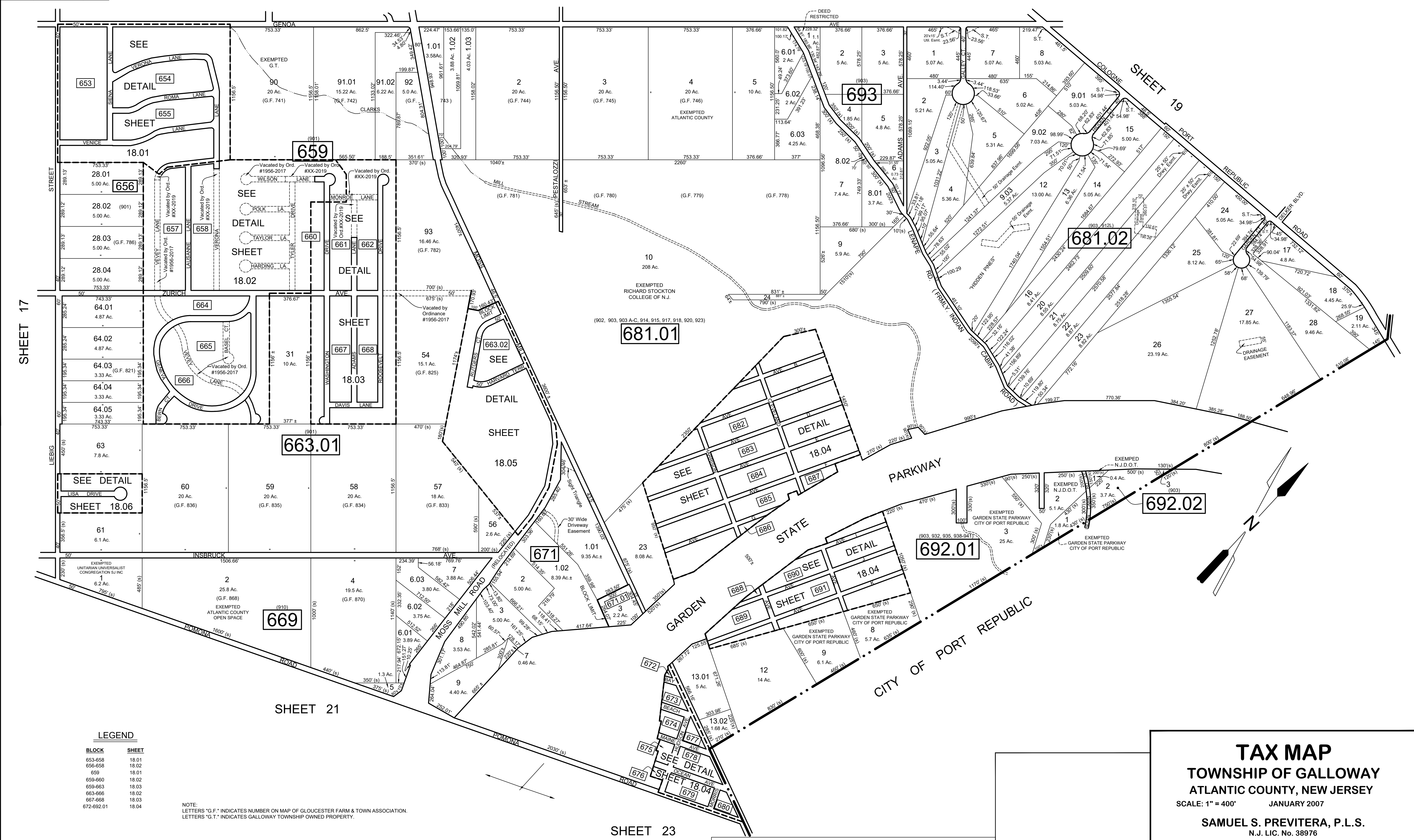


REVISIONS		
DATE	NAME	NO.
Aug. 2008	Dixon Assoc.	1
Dec. 2018	James R. Boney, PLS	2
8-15-19	J. Boney NJ Lic #31264	3

SHEET 13



LEGEND

BLOCK	SHEET
653-658	18.01
659-660	18.02
661	18.01
662-666	18.02
667-668	18.03
669-670	18.02
671-676	18.03
677-678	18.02
679-680	18.03
681-682	18.04

NOTE:
LETTERS "G.F." INDICATES NUMBER ON MAP OF GLOUCESTER FARM & TOWN ASSOCIATION.
LETTERS "G.T." INDICATES GALLOWAY TOWNSHIP OWNED PROPERTY.

SHEET 23

THIS SHEET HAS BEEN DRAWN USING COMPUTER AIDED DRAFTING / DESIGN (CAD/D) AND WAS DONE UNDER THE SUPERVISION OF SAMUEL S. PREVITERA, P.L.S., NEW JERSEY PROFESSIONAL LAND SURVEYOR LICENSE NO. 38976, AND DATED DECEMBER 31, 2006.

TAX MAP
TOWNSHIP OF GALLOWAY
 ATLANTIC COUNTY, NEW JERSEY
 SCALE: 1" = 400' JANUARY 2007
SAMUEL S. PREVITERA, P.L.S.
 N.J. LIC. No. 38976
 26 NORTH ROUTE 73, SUITE 200
 CEDAR BROOK, N.J. 08018