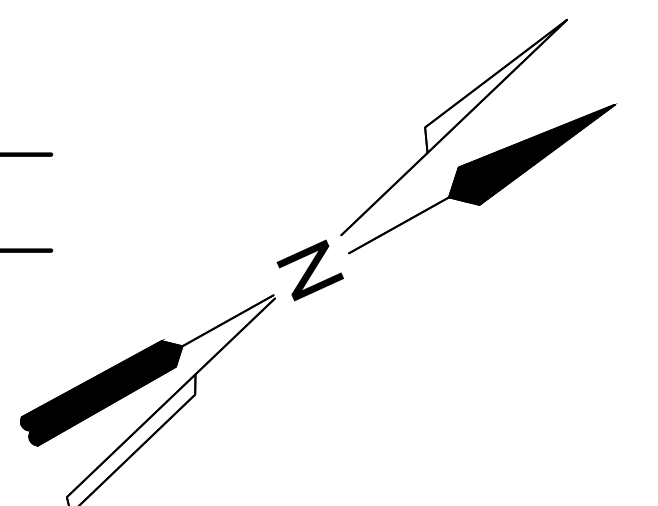
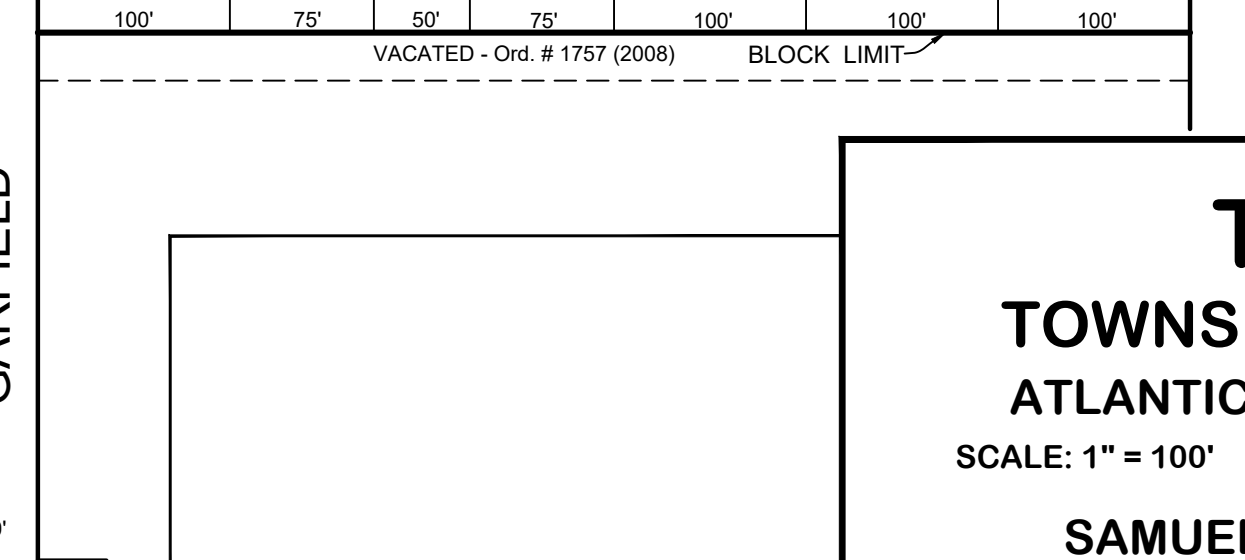
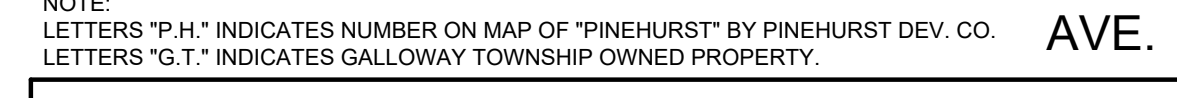
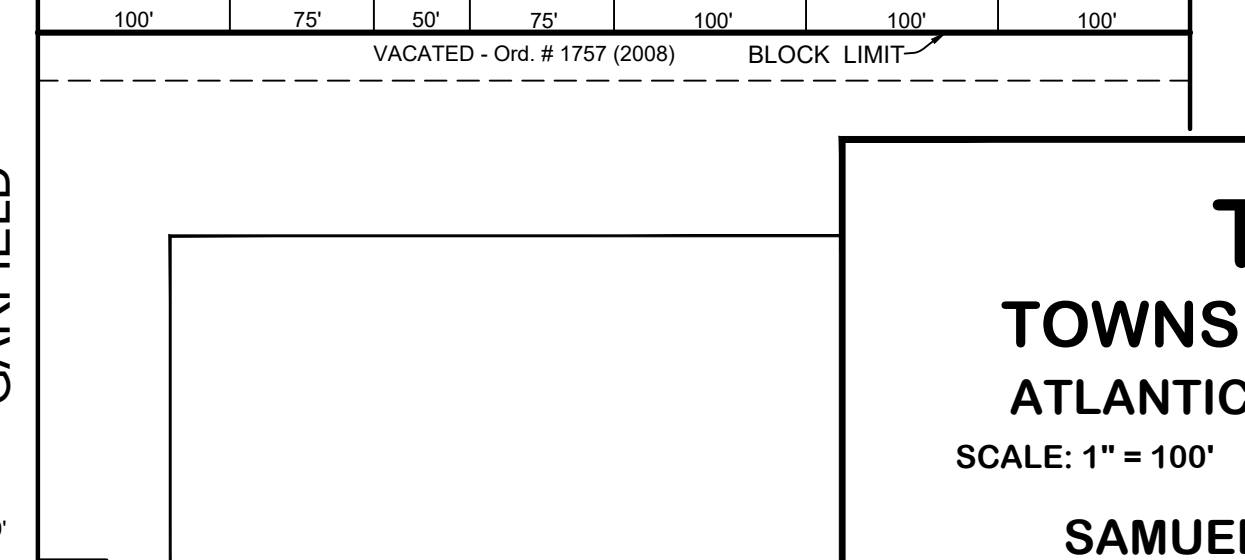
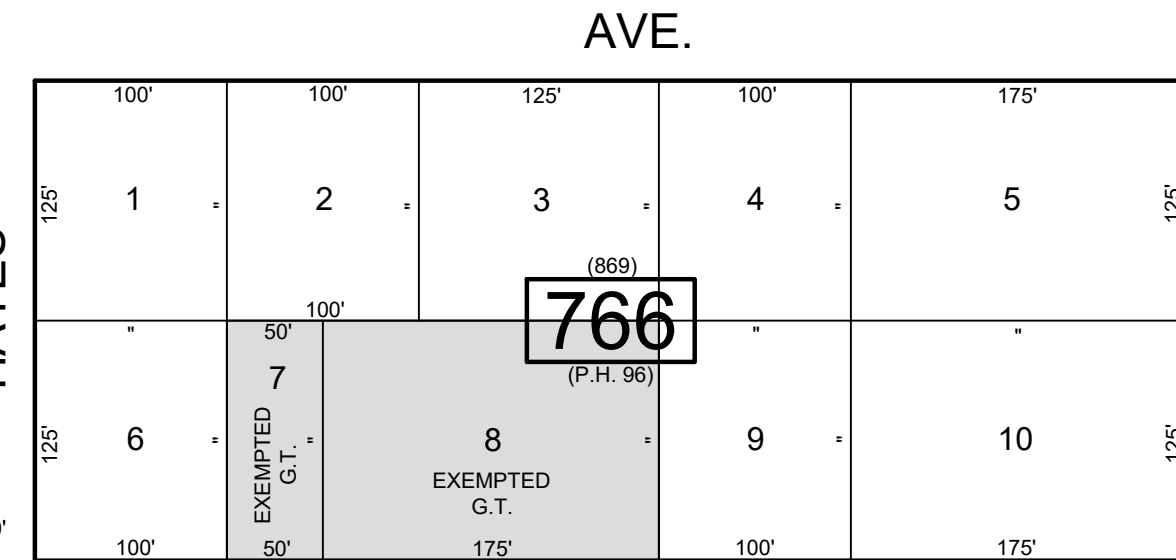
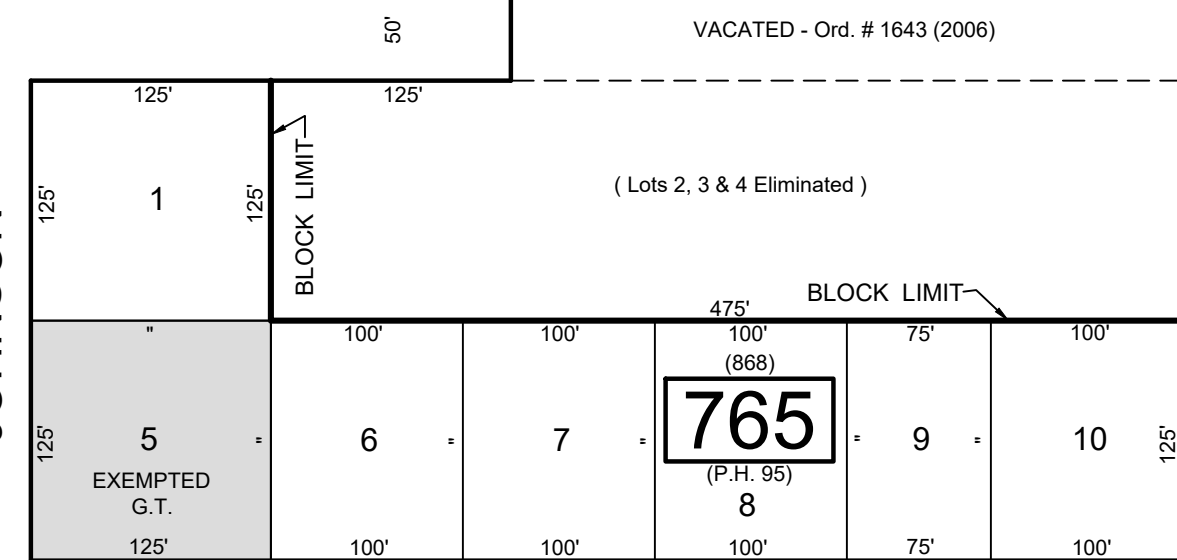
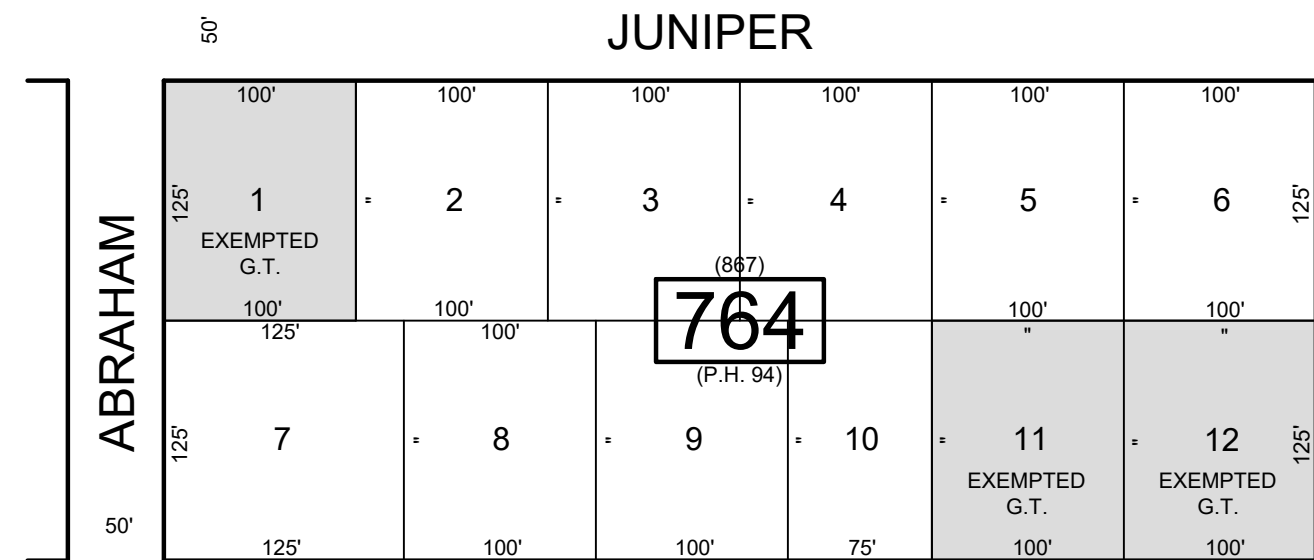
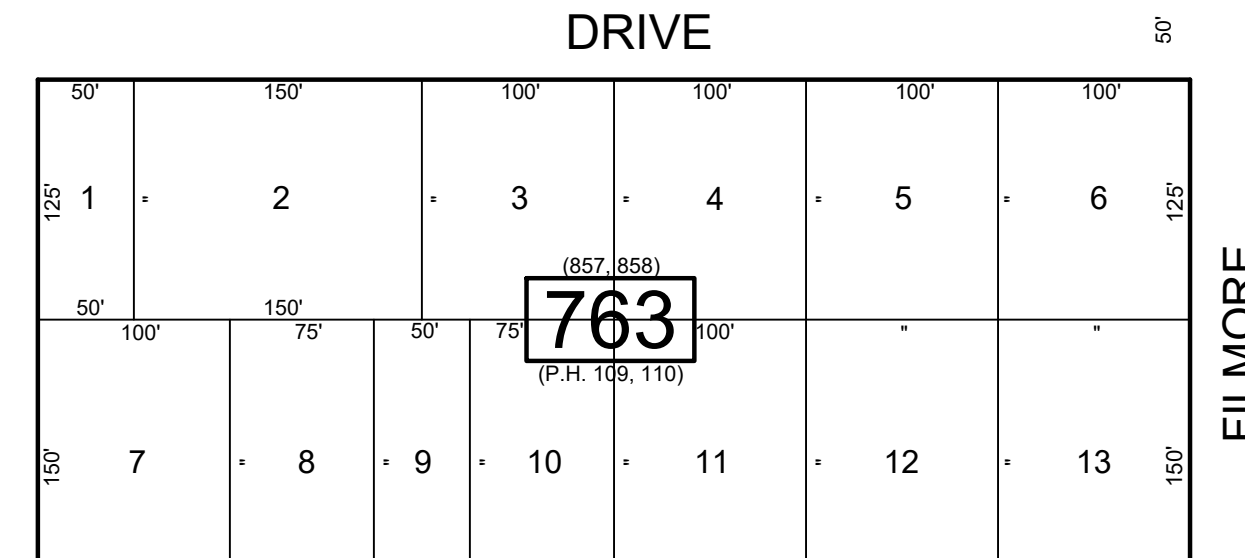
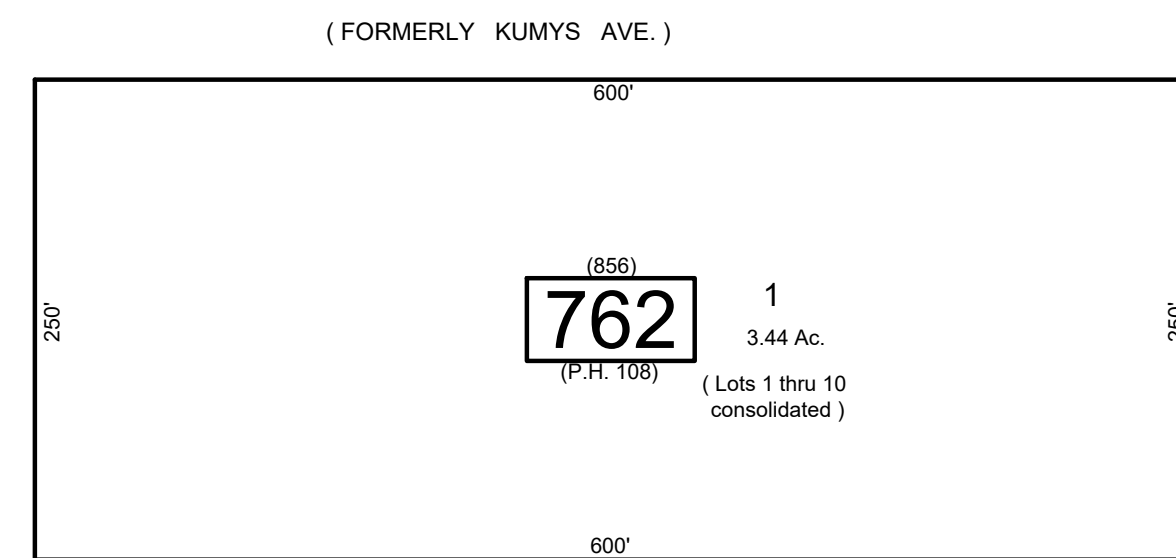
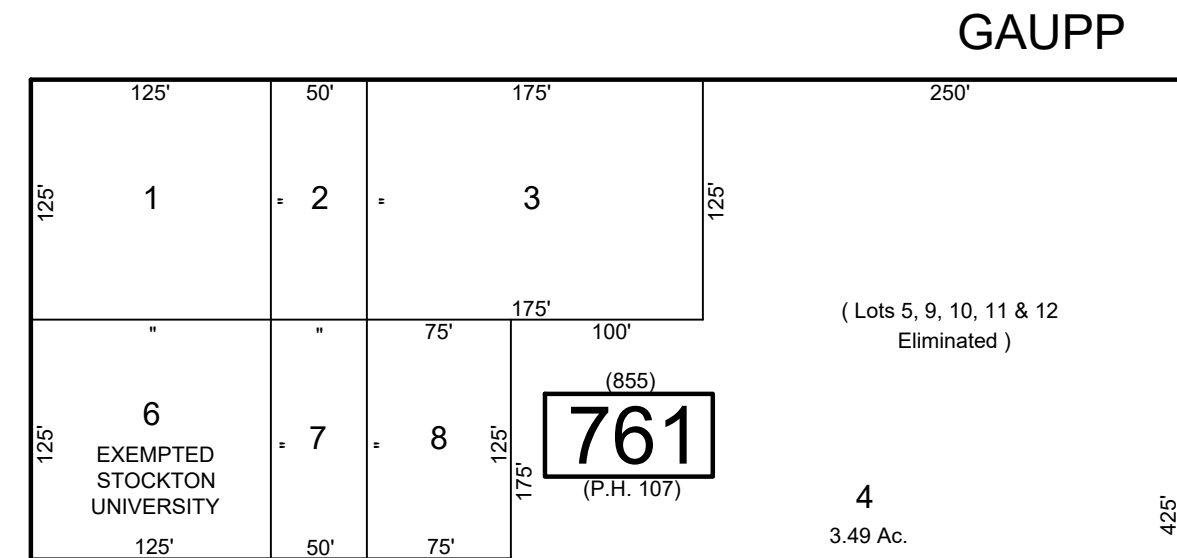
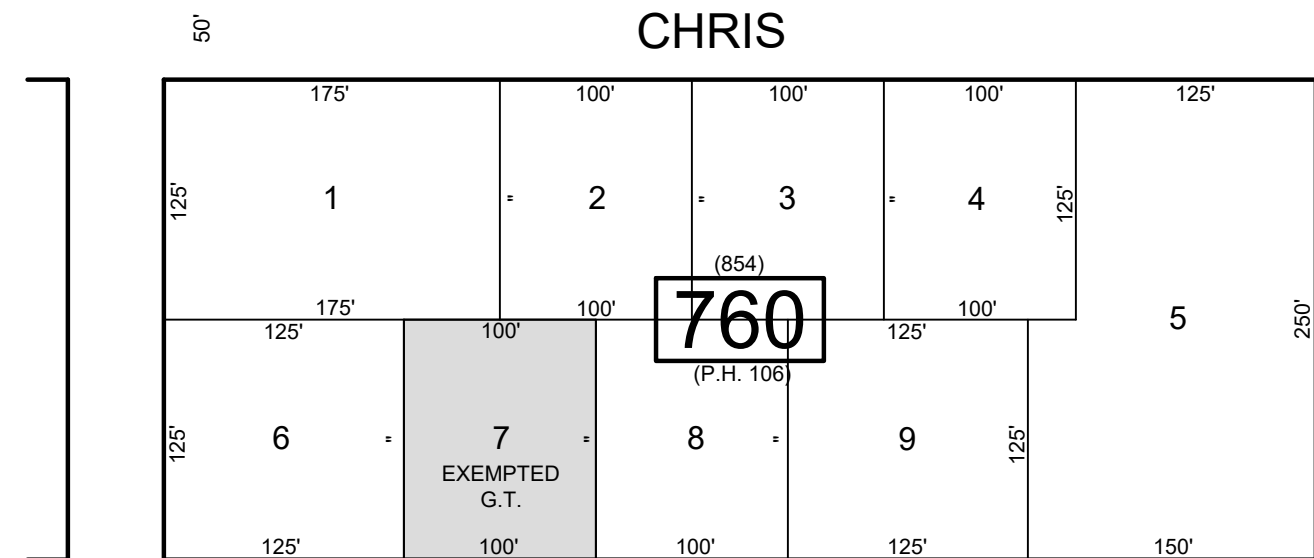
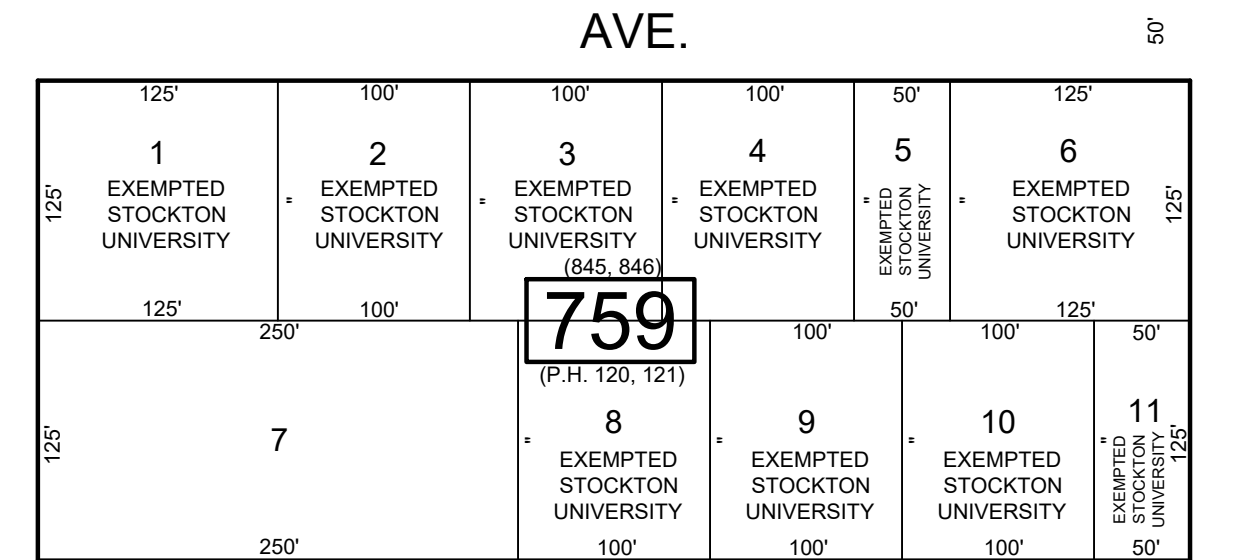
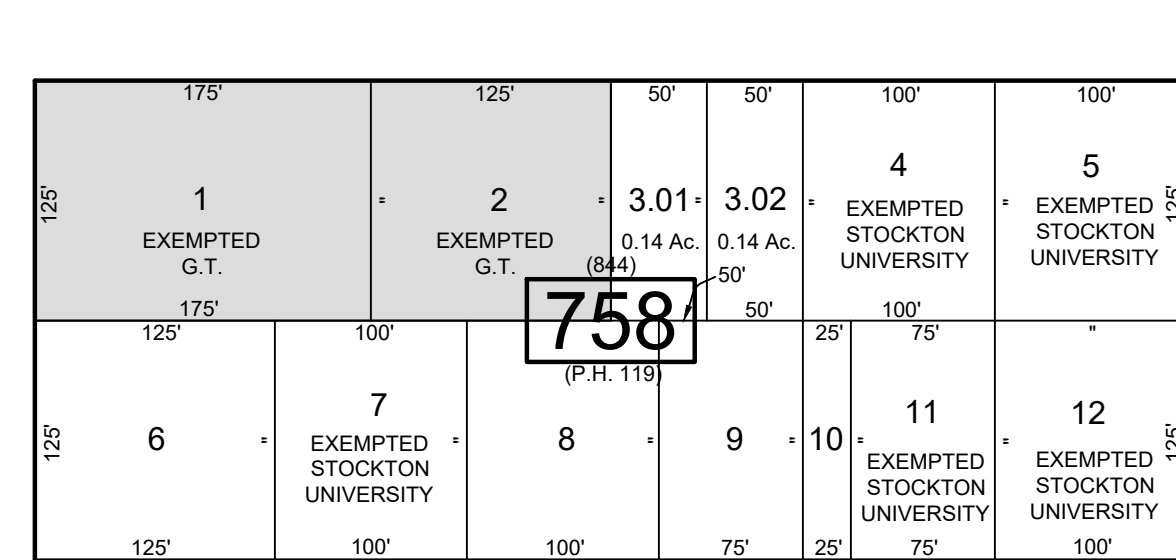
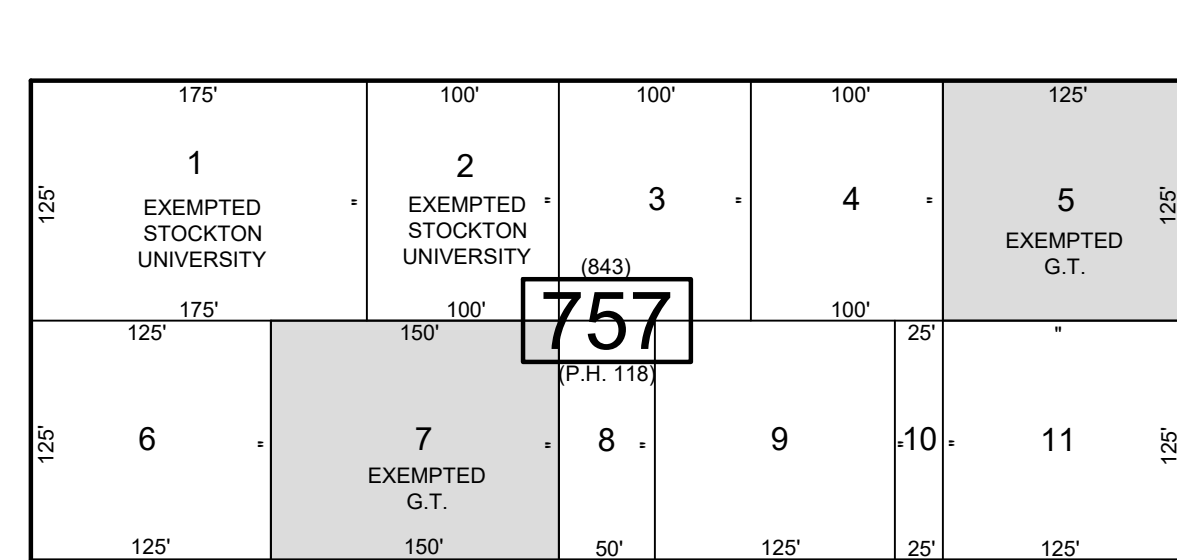
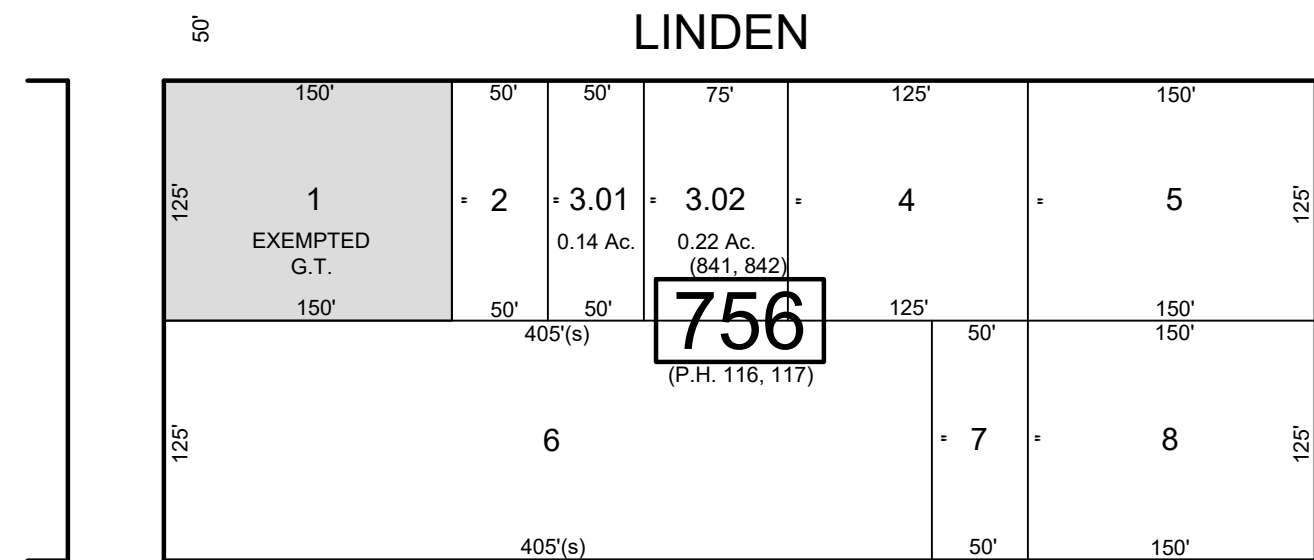
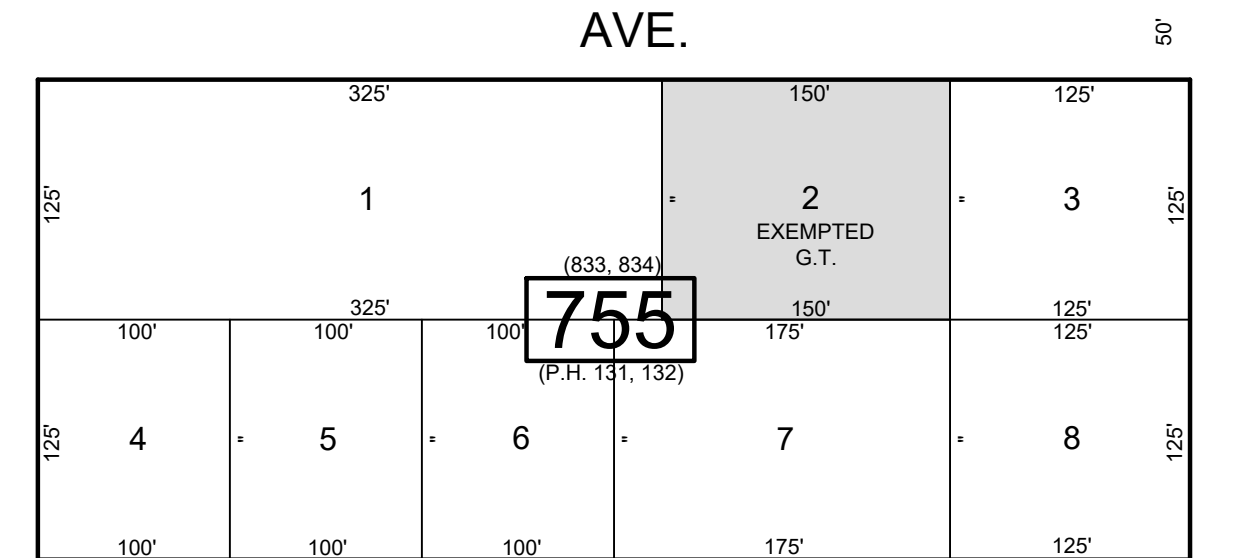
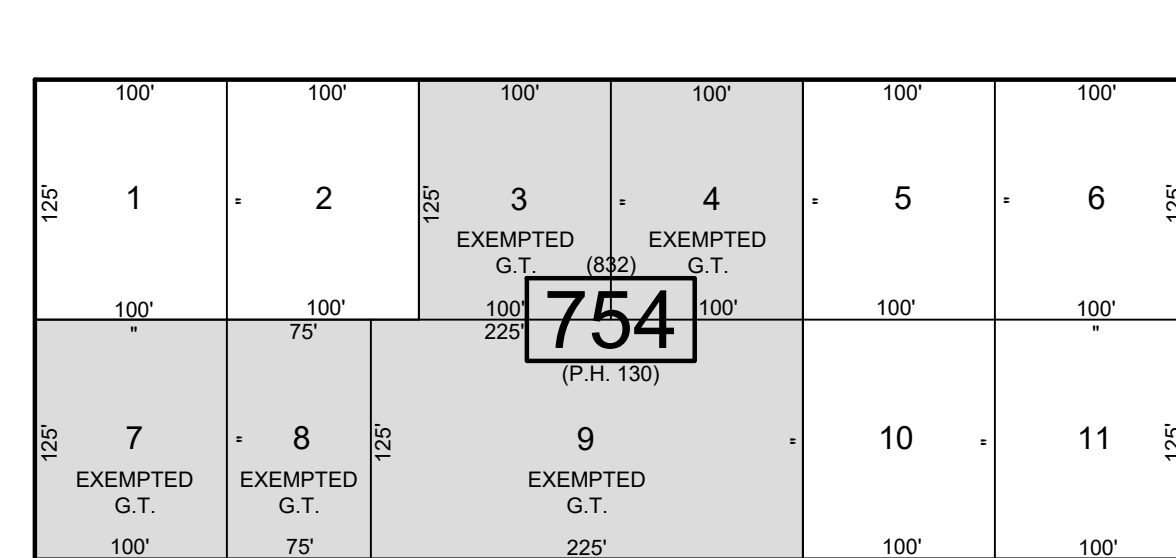
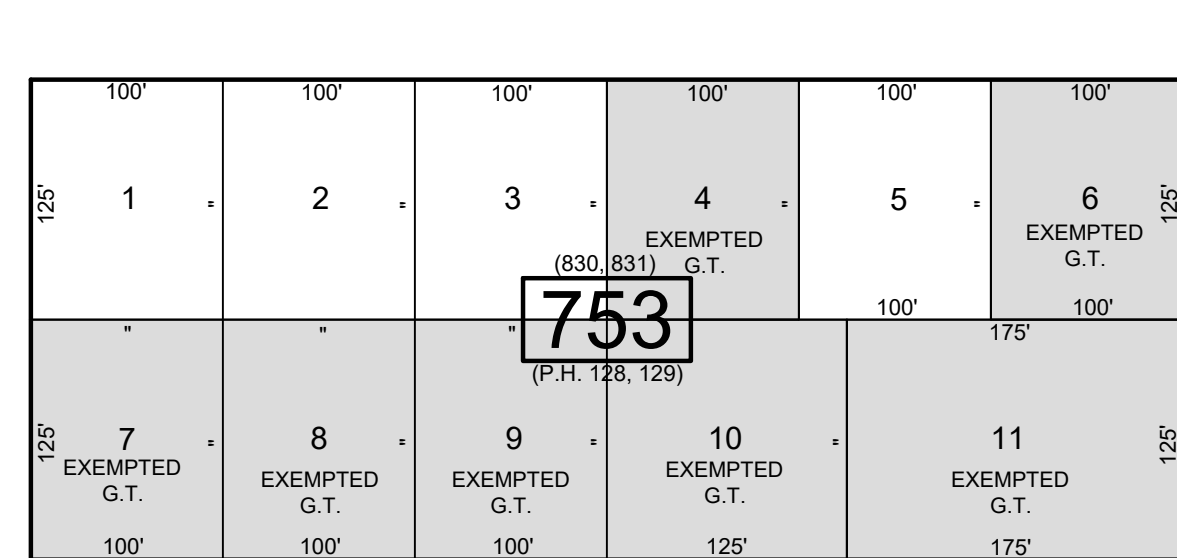
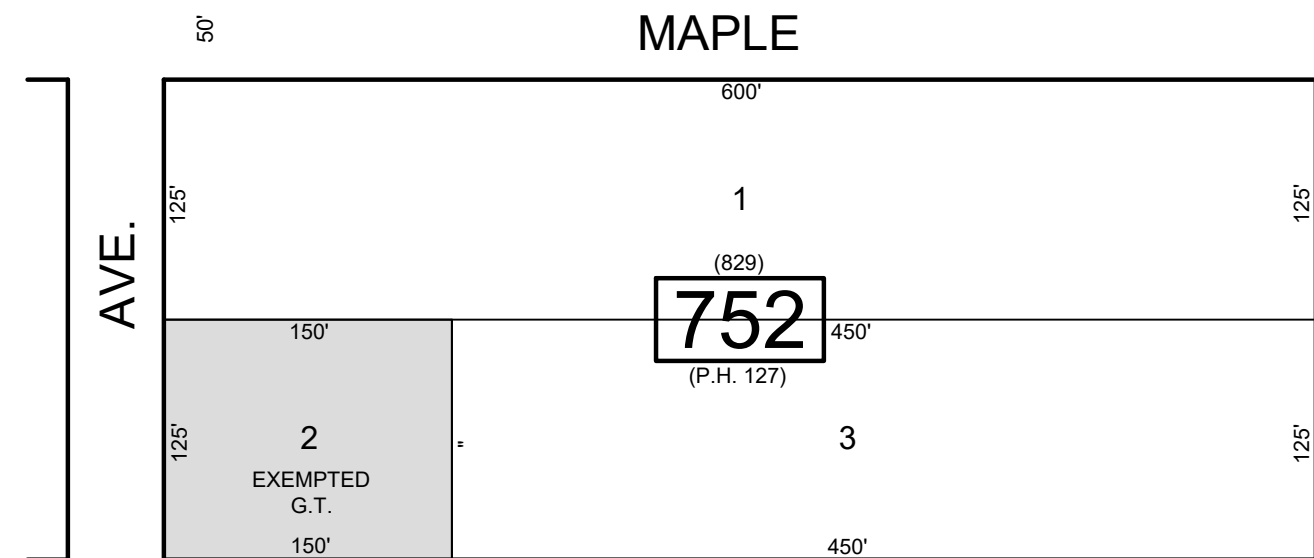
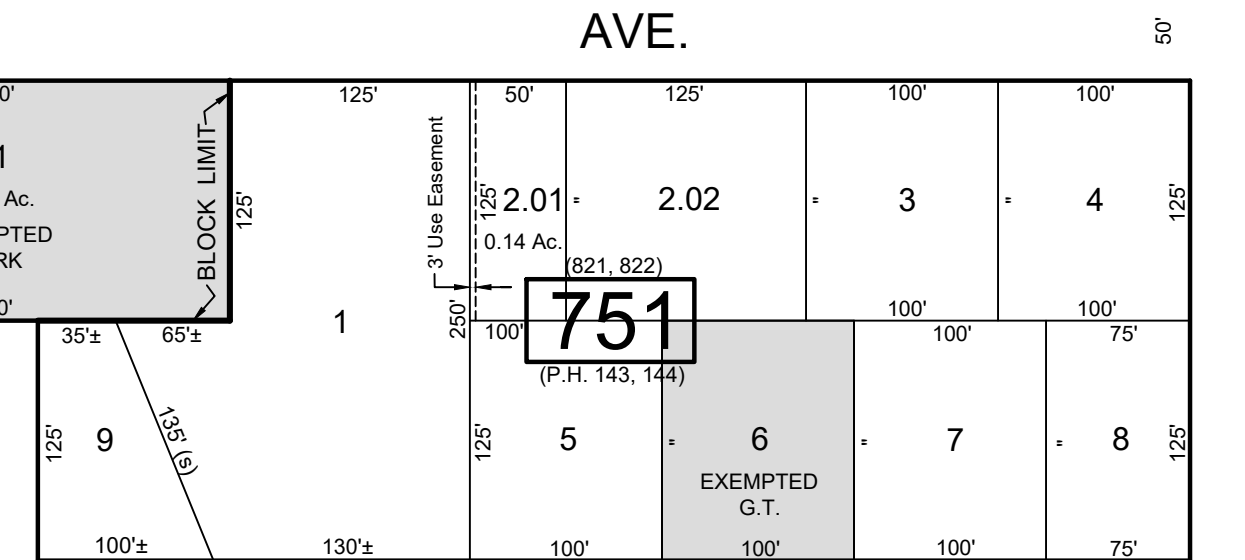
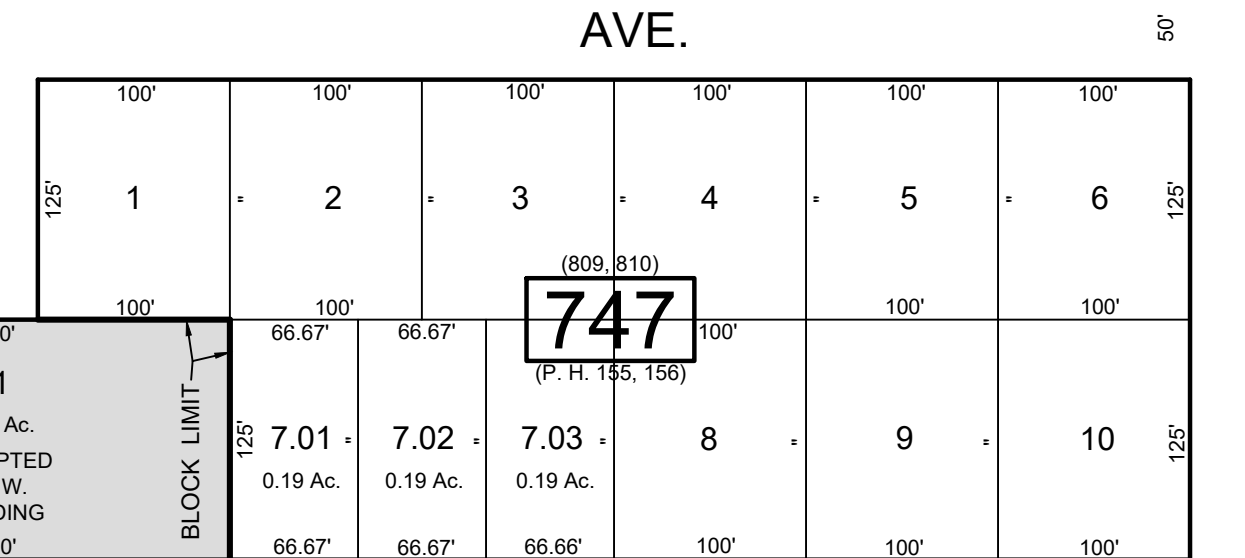
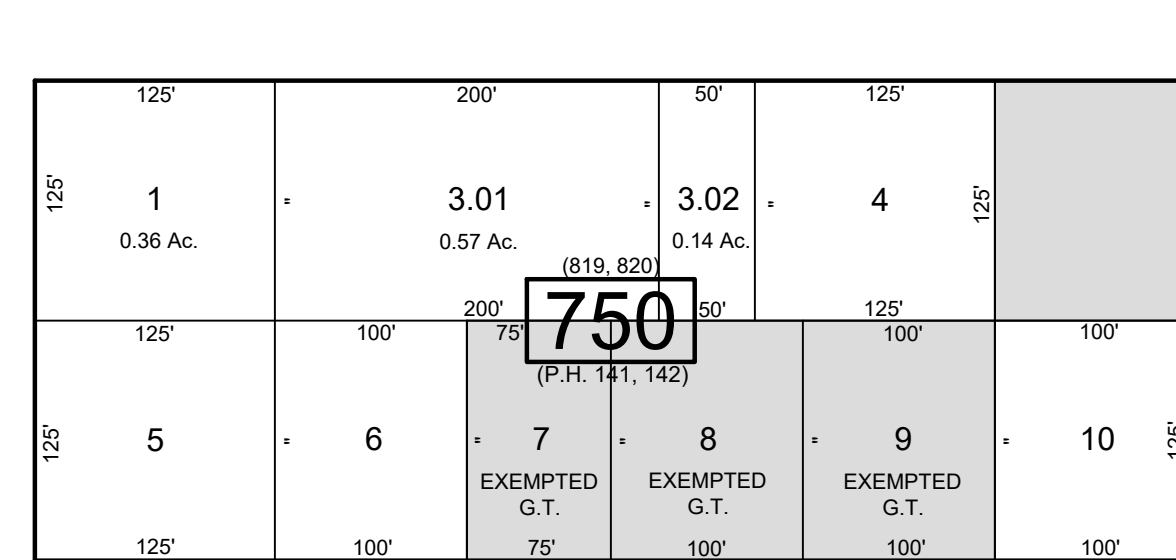
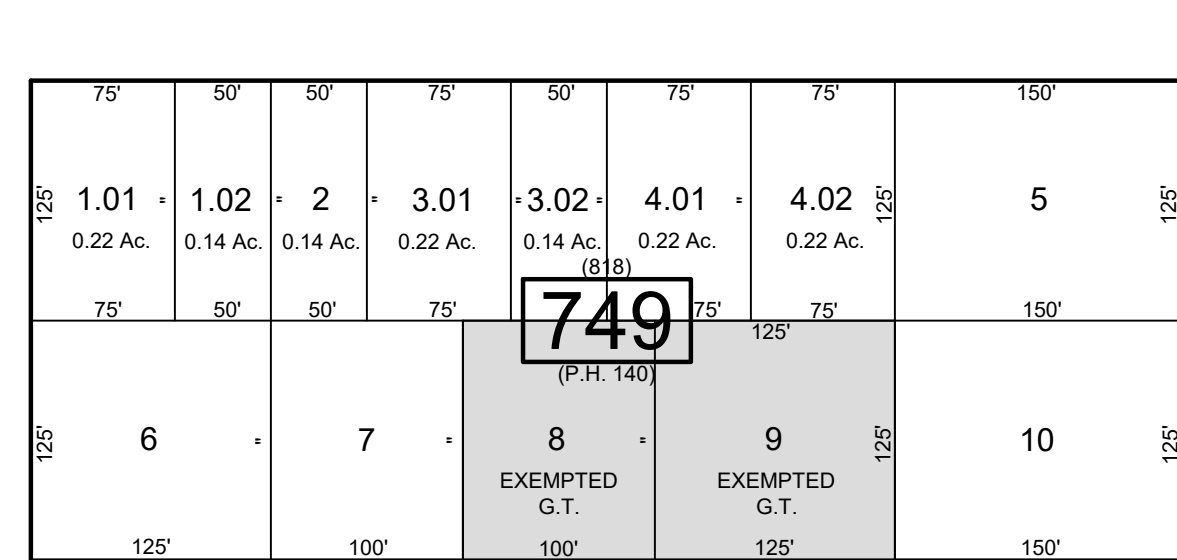
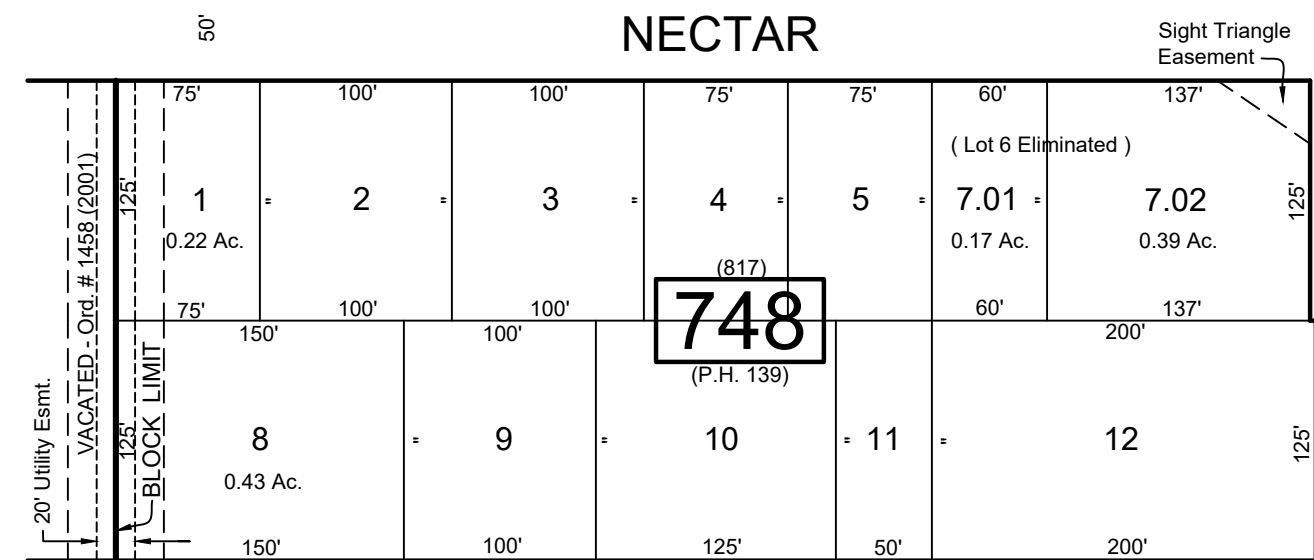
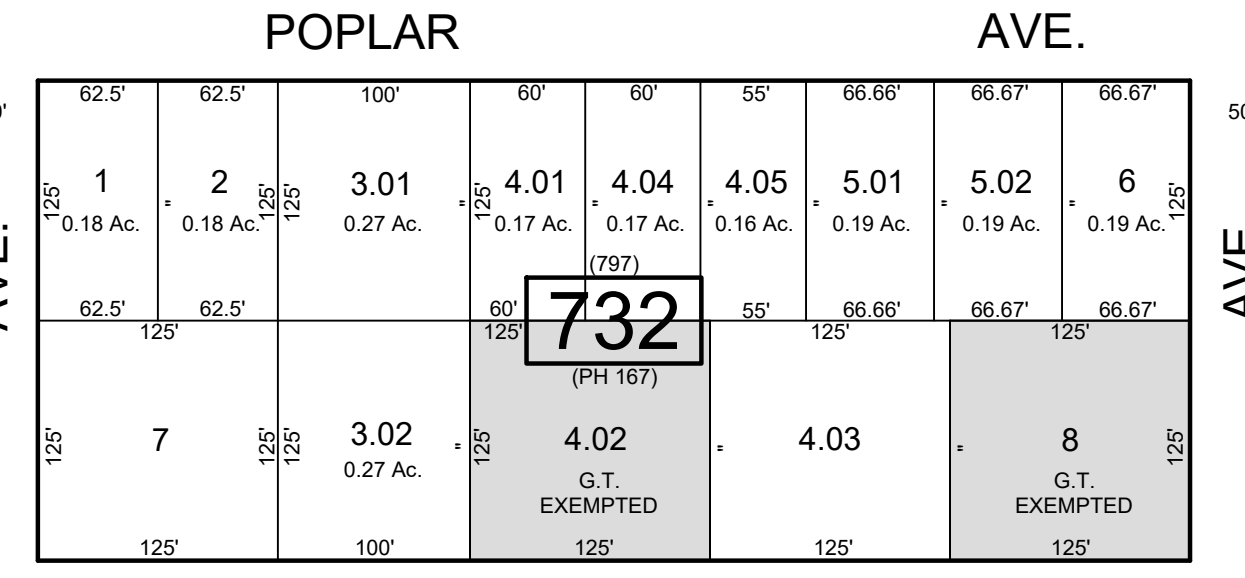
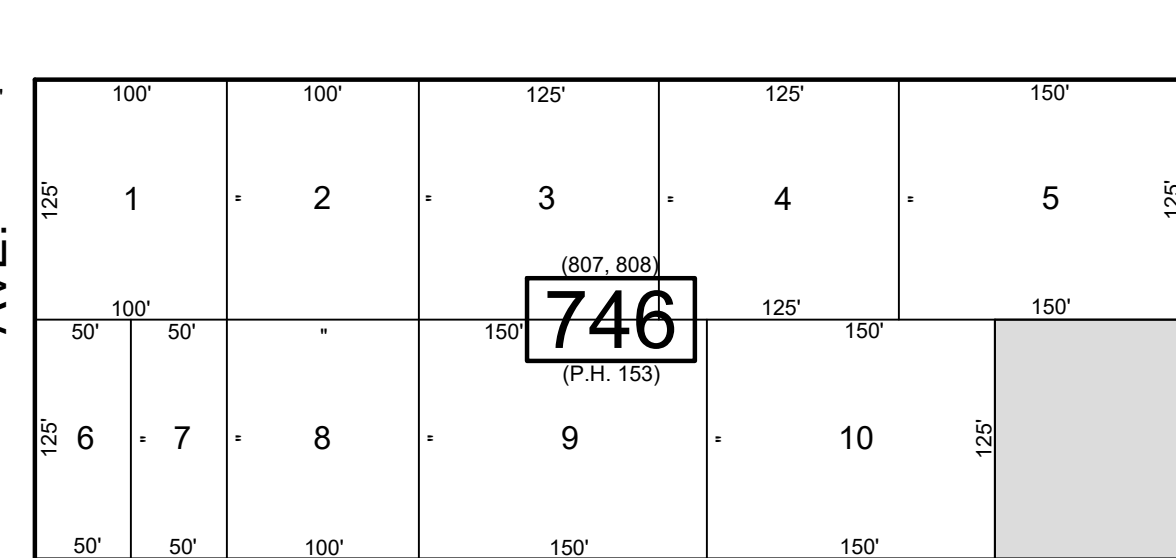
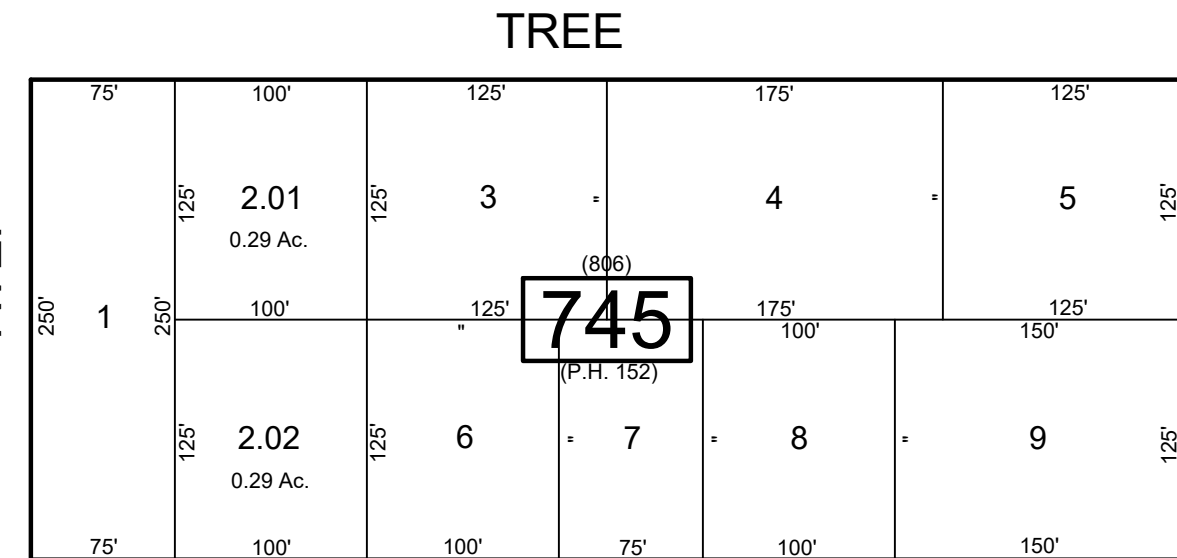
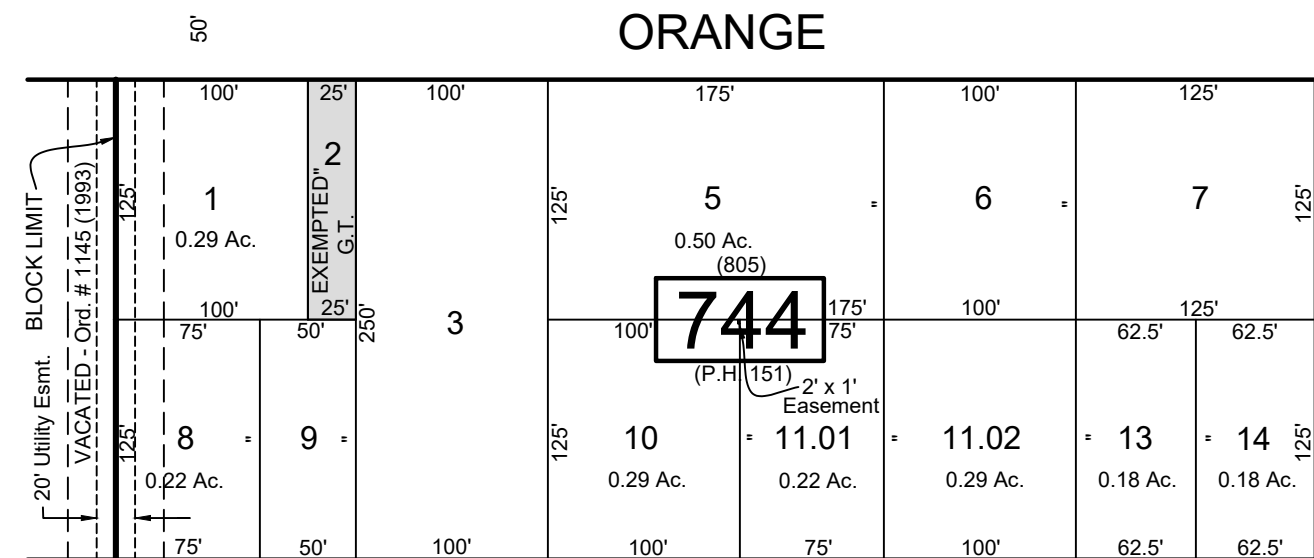


| REVISIONS | | |
|---------------|---------------------------|-----|
| DATE | NAME | NO. |
| Aug. 2008 | Dixon Assoc. | 1 |
| Nov. 15, 2012 | Dixon Assoc. | 2 |
| Aug. 15, 2019 | J. Boney NJ Lic #31264 | 3 |
| Aug. 21, 2023 | J. Boney NJ Lic #31264 | 4 |

SHEET 20.01



SHEET 20.09

SHEET 20.05

SHEET 20.04

FILMORE

TAX MAP
TOWNSHIP OF GALLOWAY
 ATLANTIC COUNTY, NEW JERSEY
 SCALE: 1" = 100' JANUARY 2007
 SAMUEL S. PREVITERA, P.L.S.
 N.J. Lic. No. 38976
 26 NORTH ROUTE 73, SUITE 200
 CEDAR BROOK, N.J. 08018

THIS SHEET HAS BEEN DRAWN USING COMPUTER AIDED DRAFTING / DESIGN (CAD/D) AND WAS DONE UNDER THE SUPERVISION OF SAMUEL S. PREVITERA, P.L.S., NEW JERSEY PROFESSIONAL LAND SURVEYOR LICENSE NO. 38976, AND DATED DECEMBER 31, 2006.