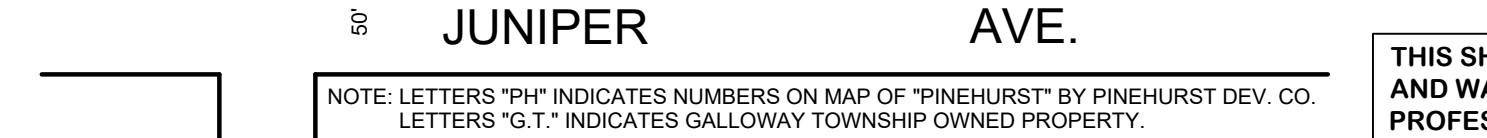
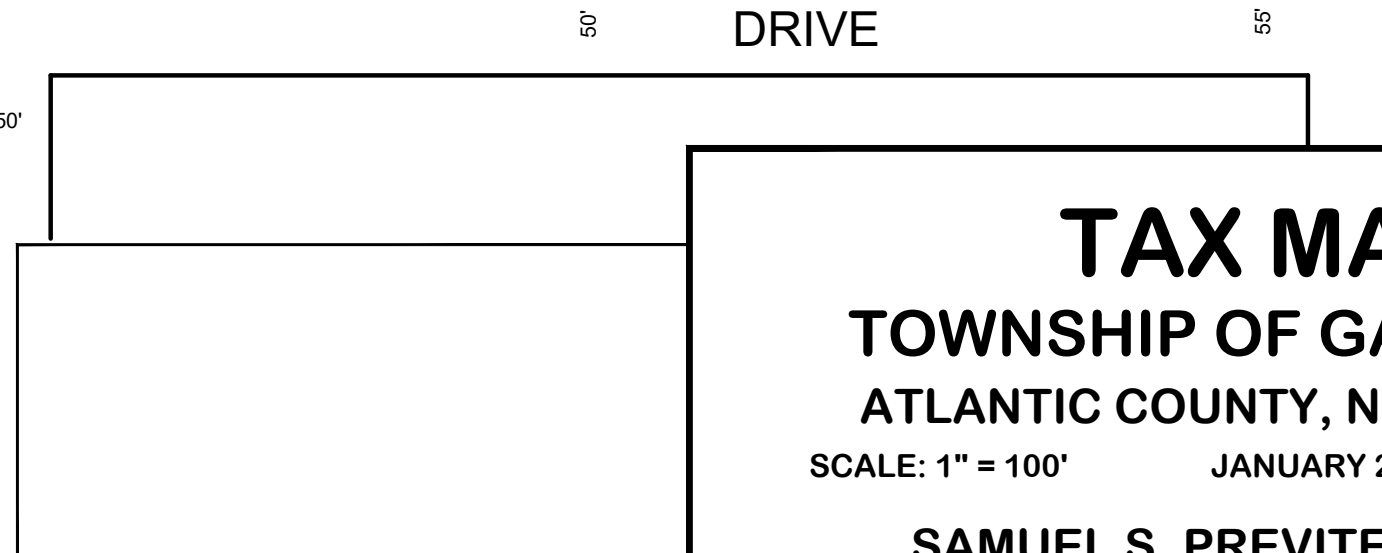
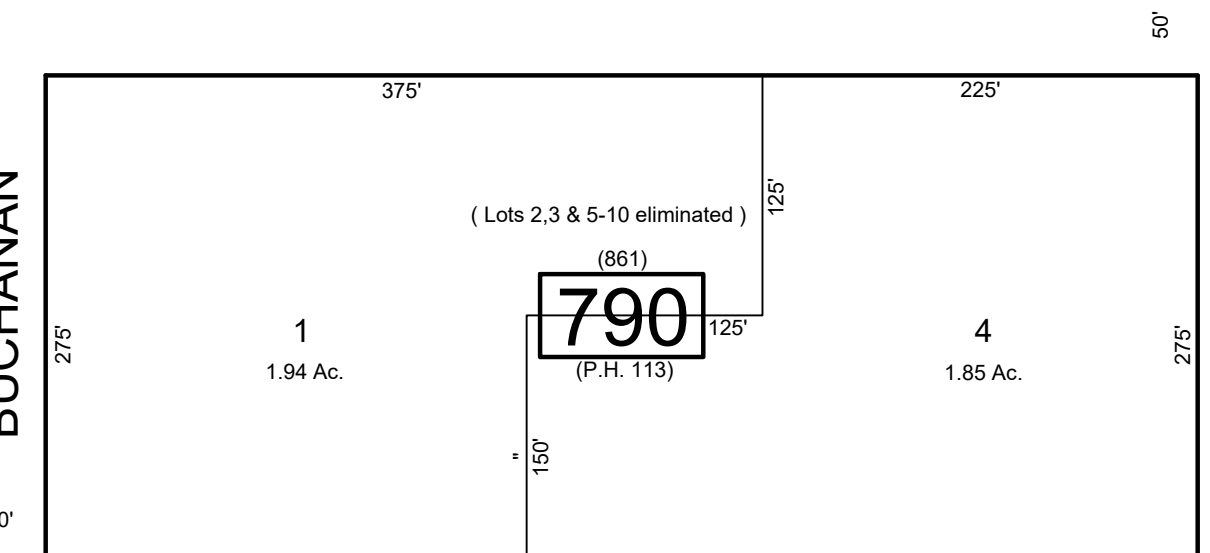
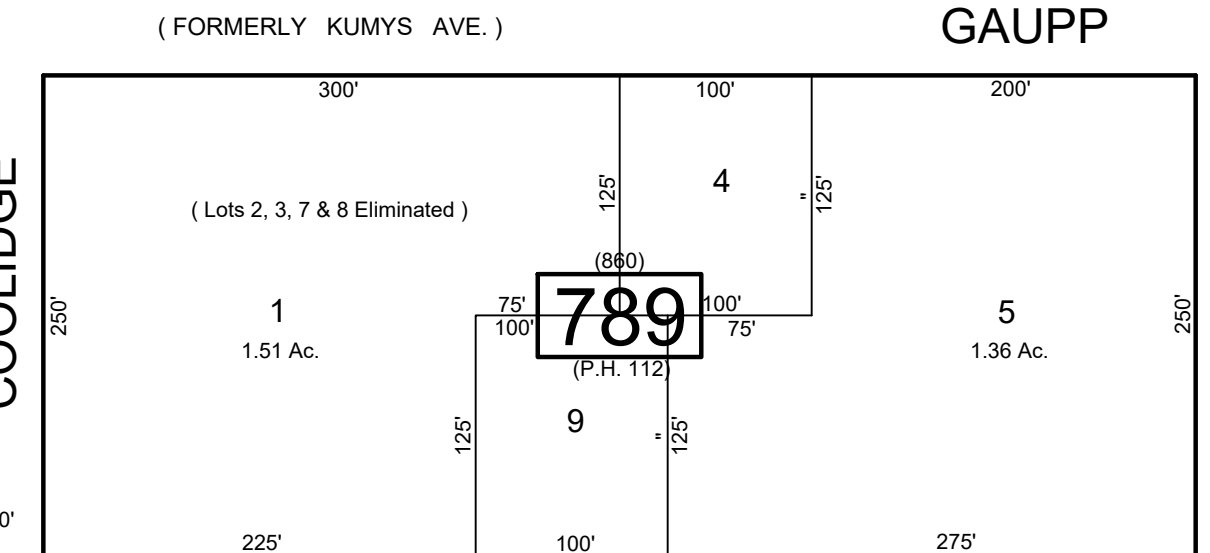
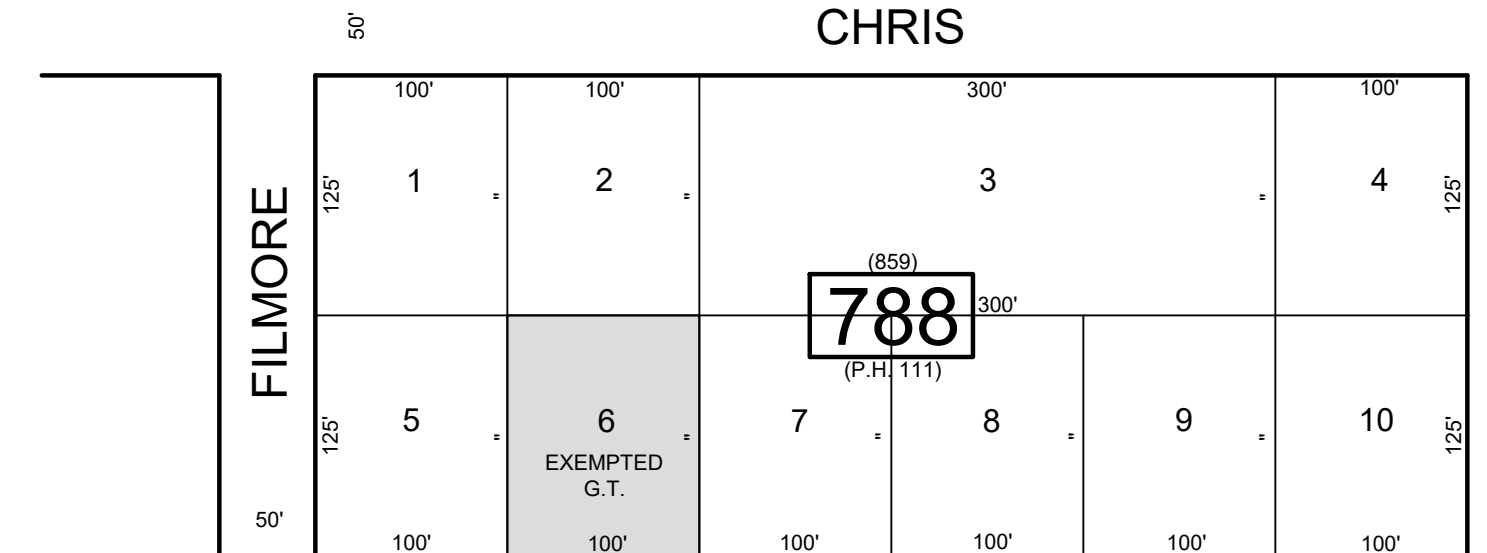
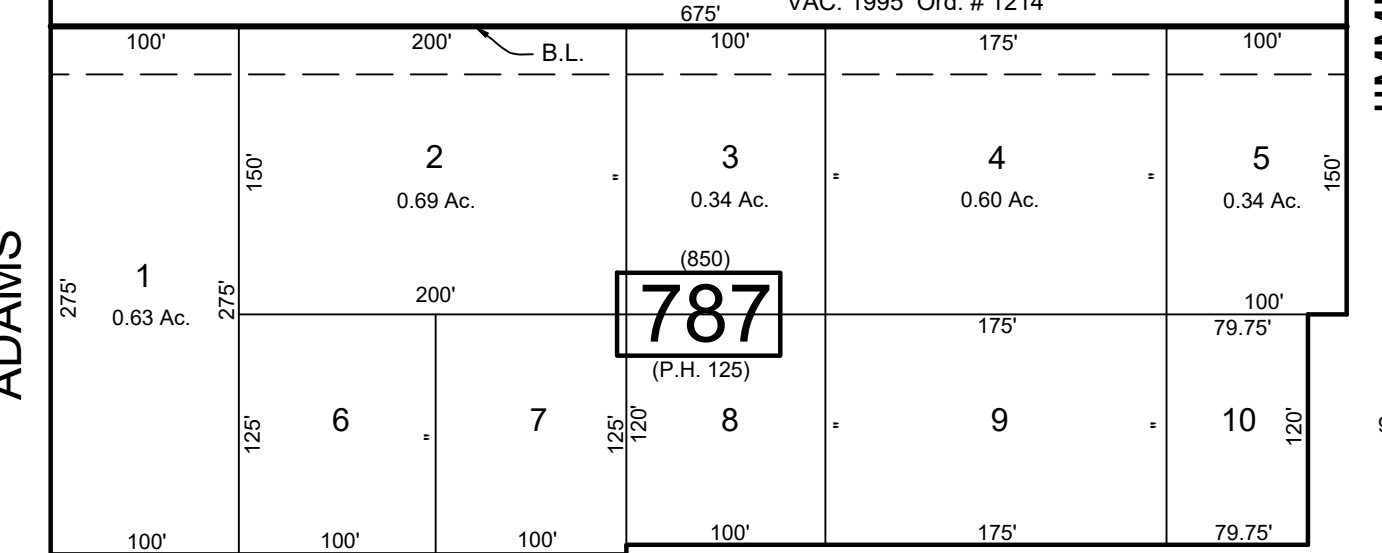
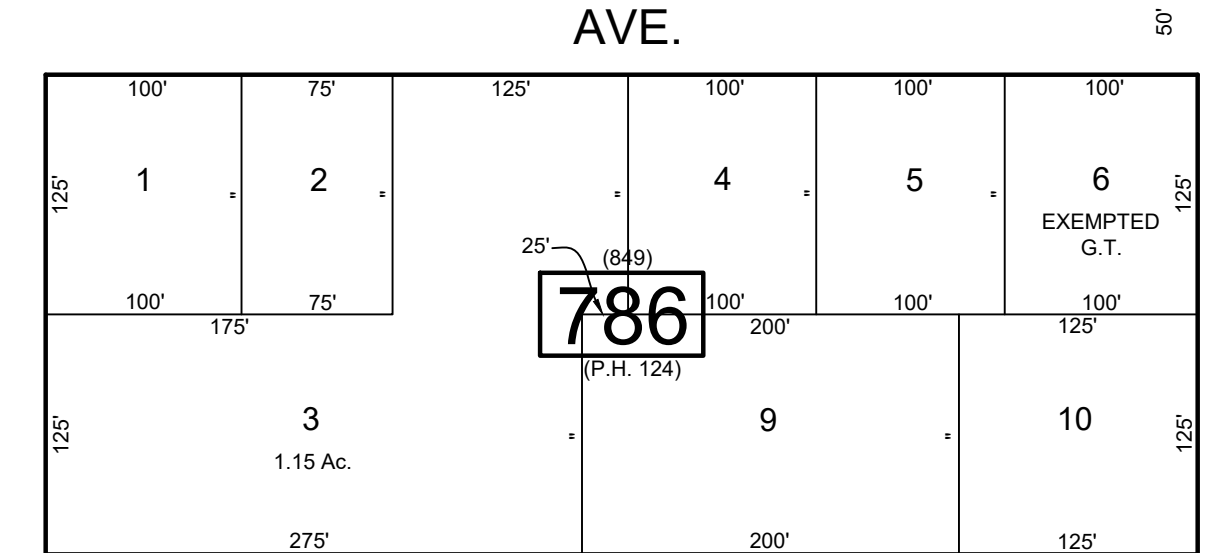
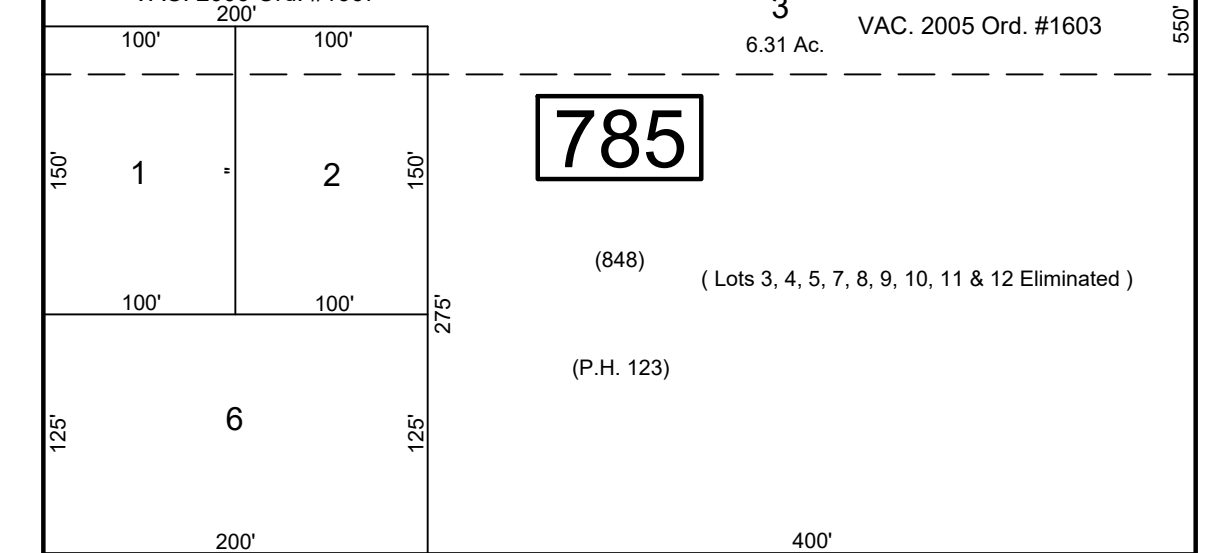
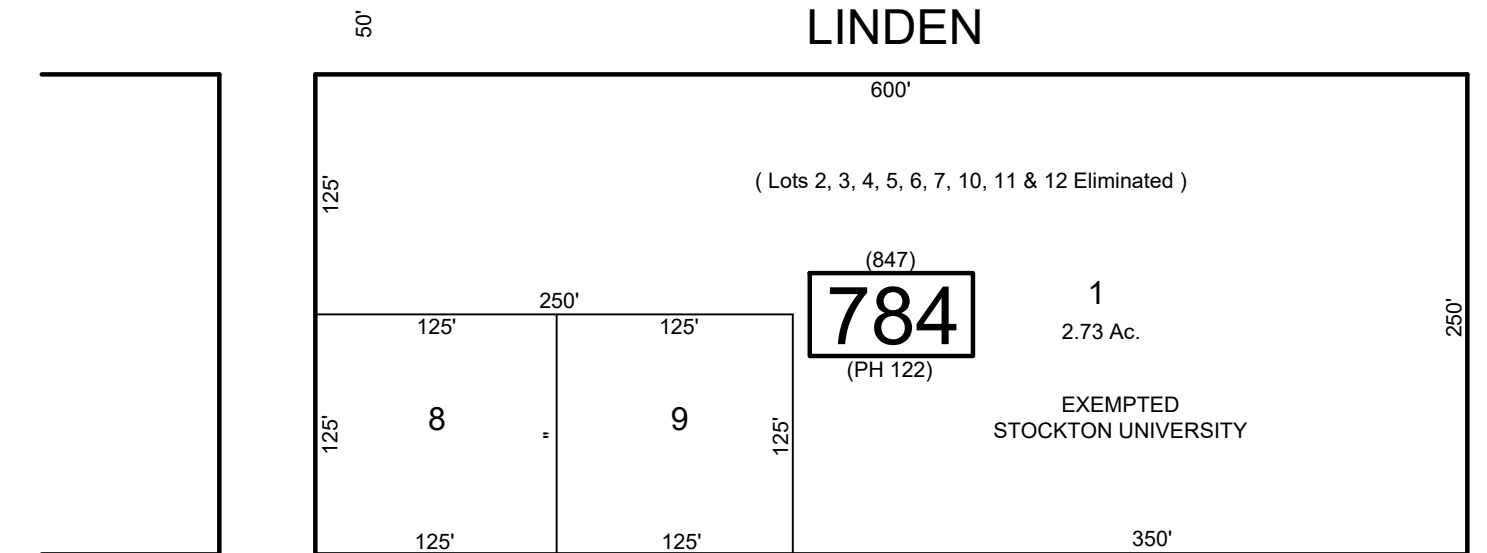
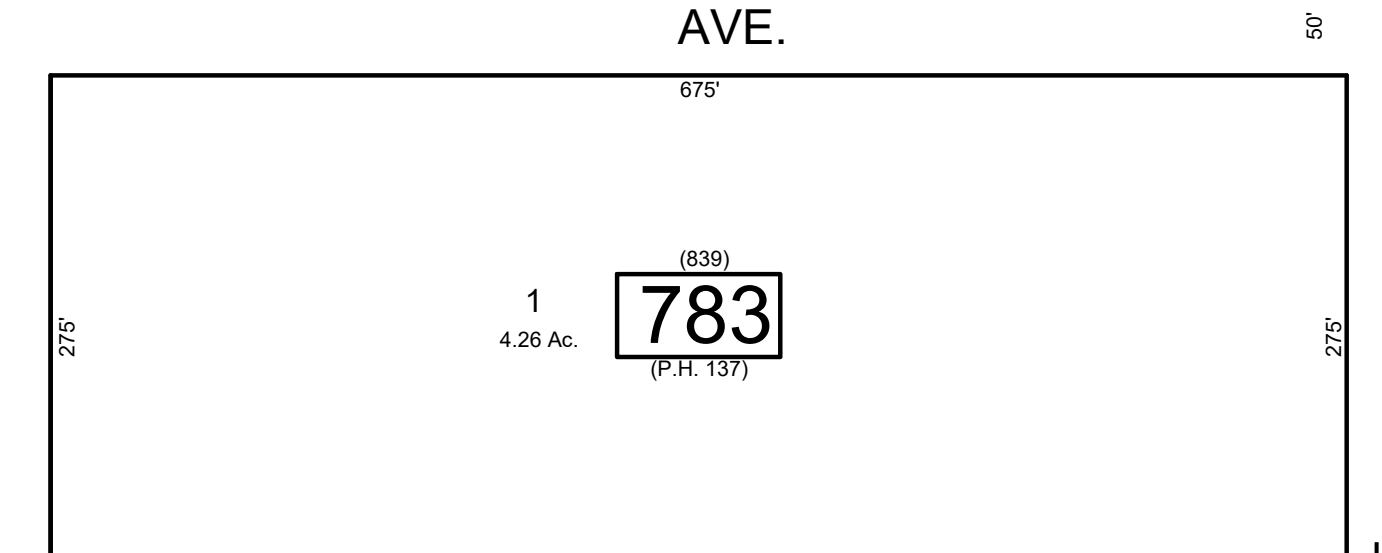
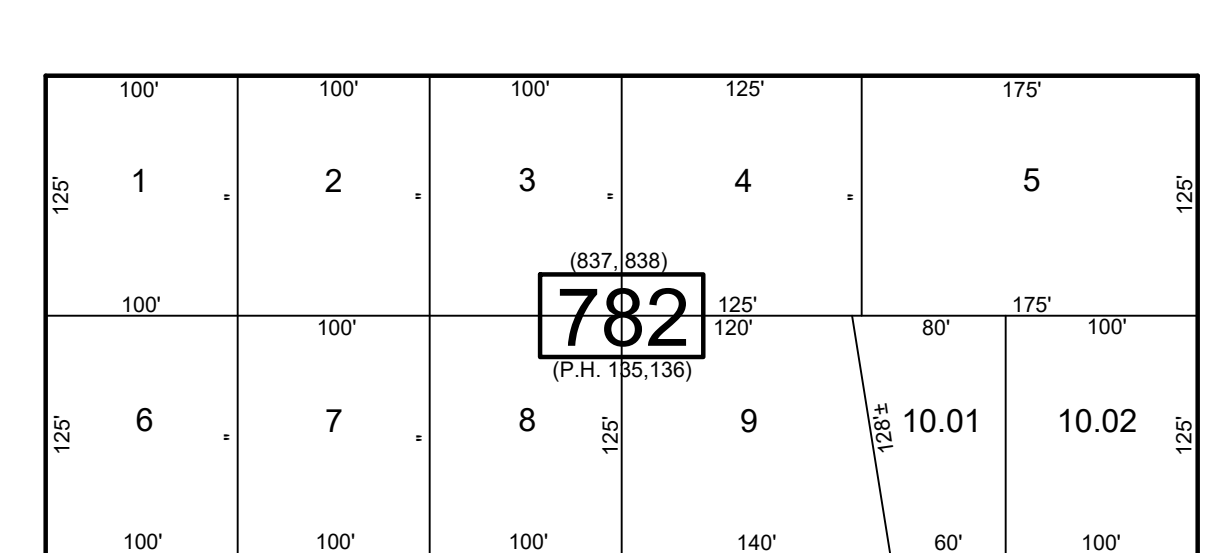
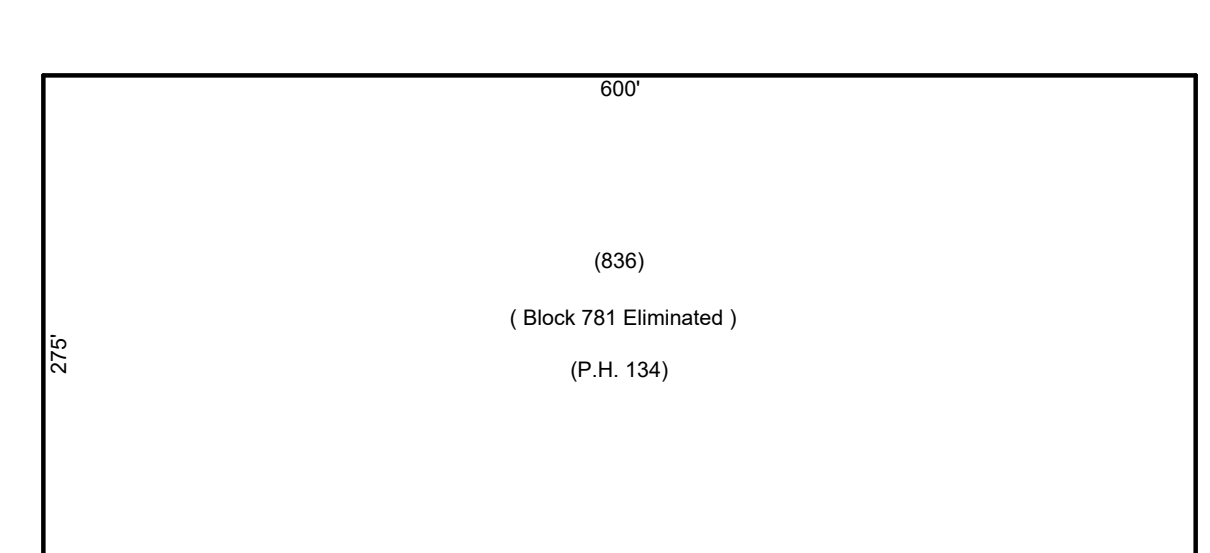
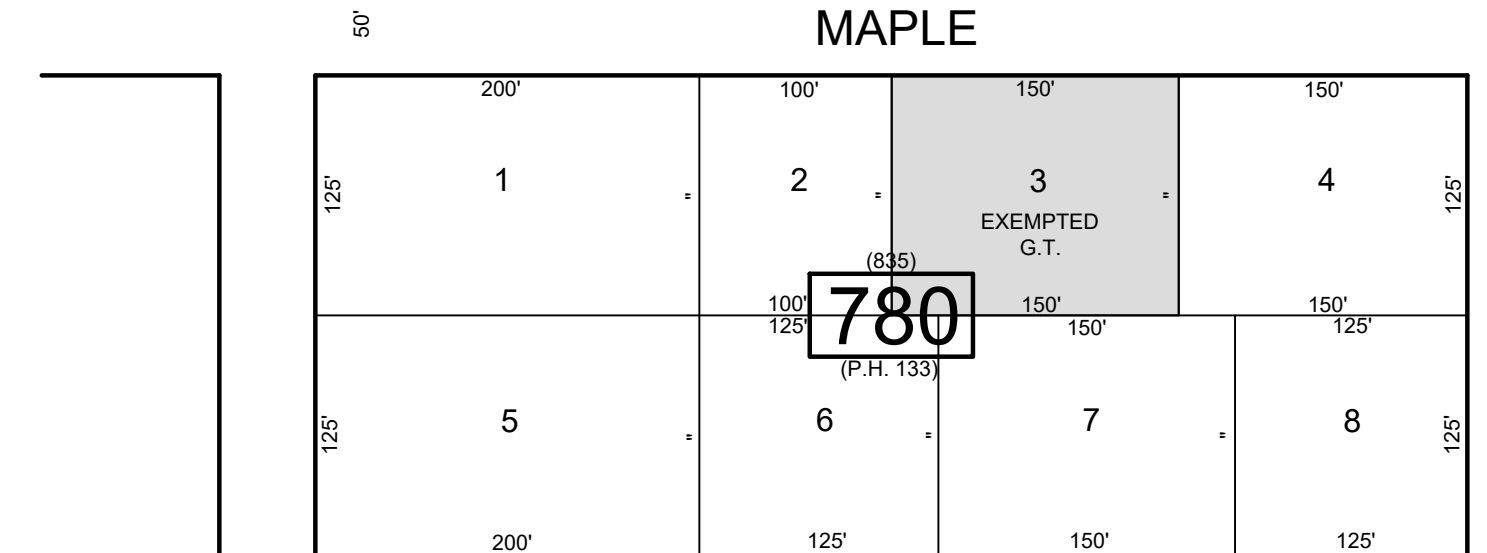
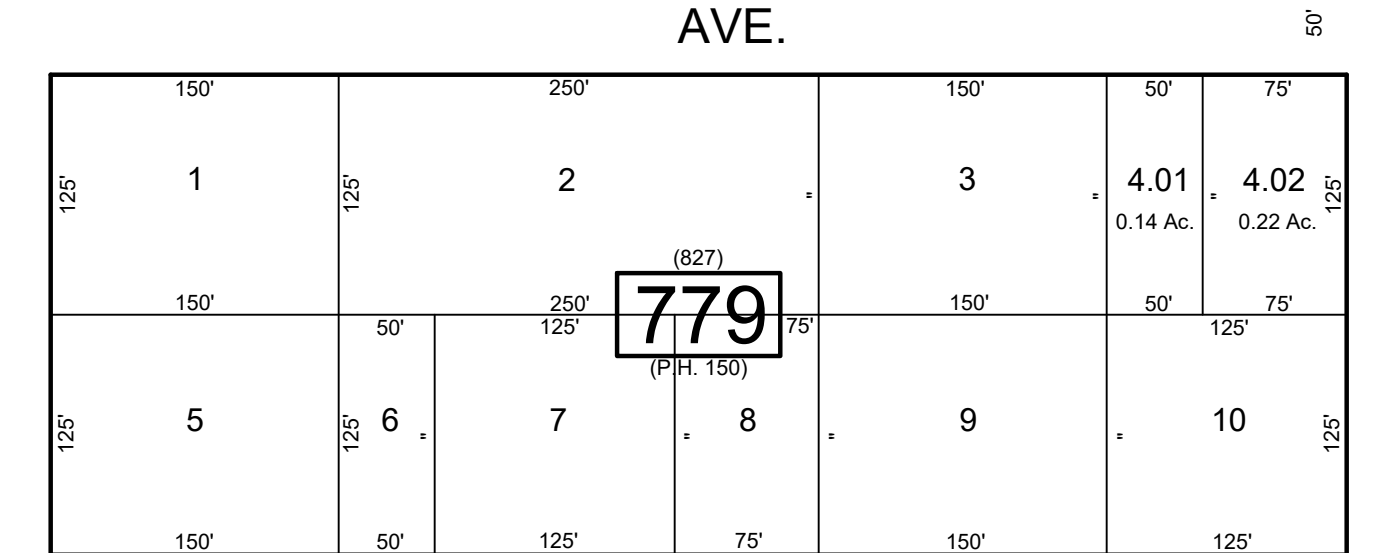
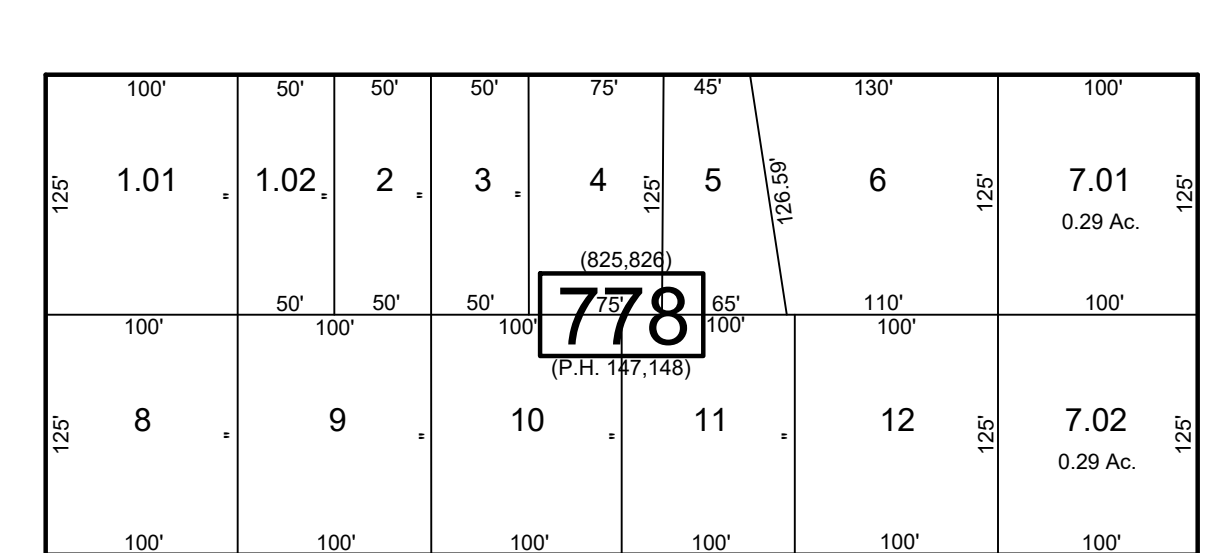
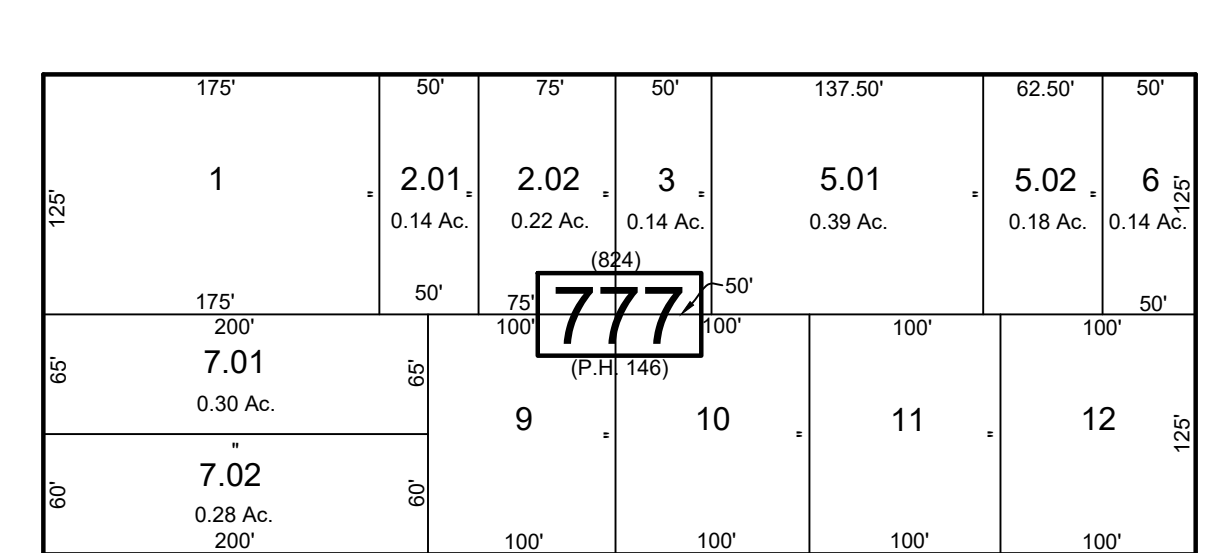
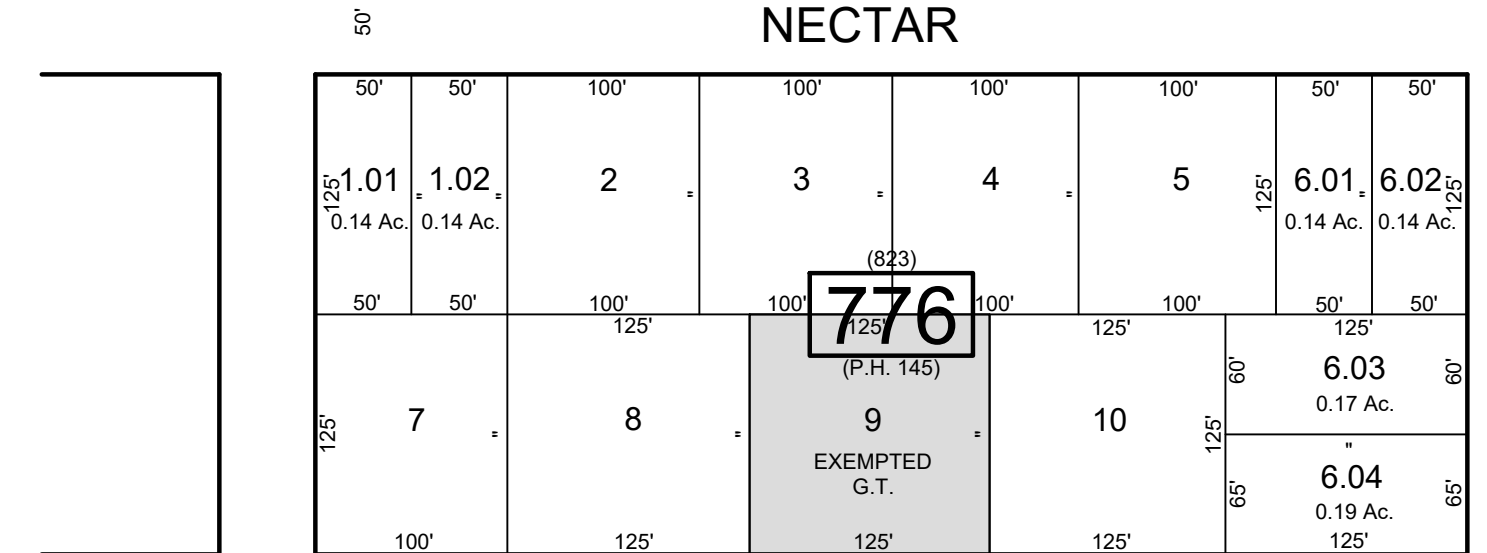
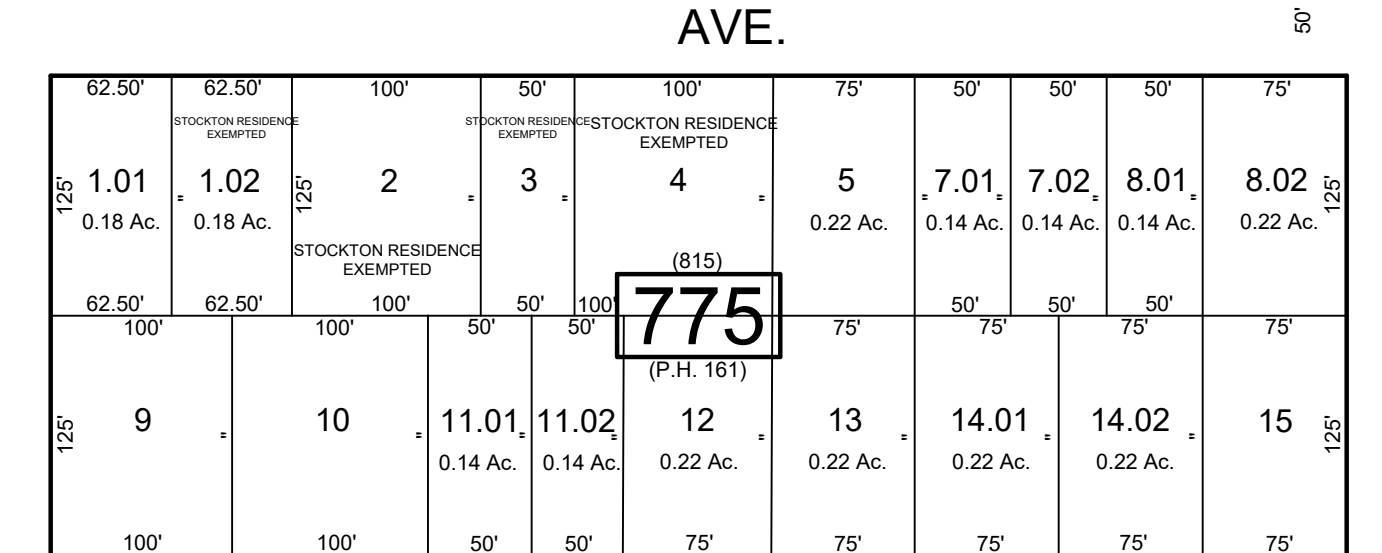
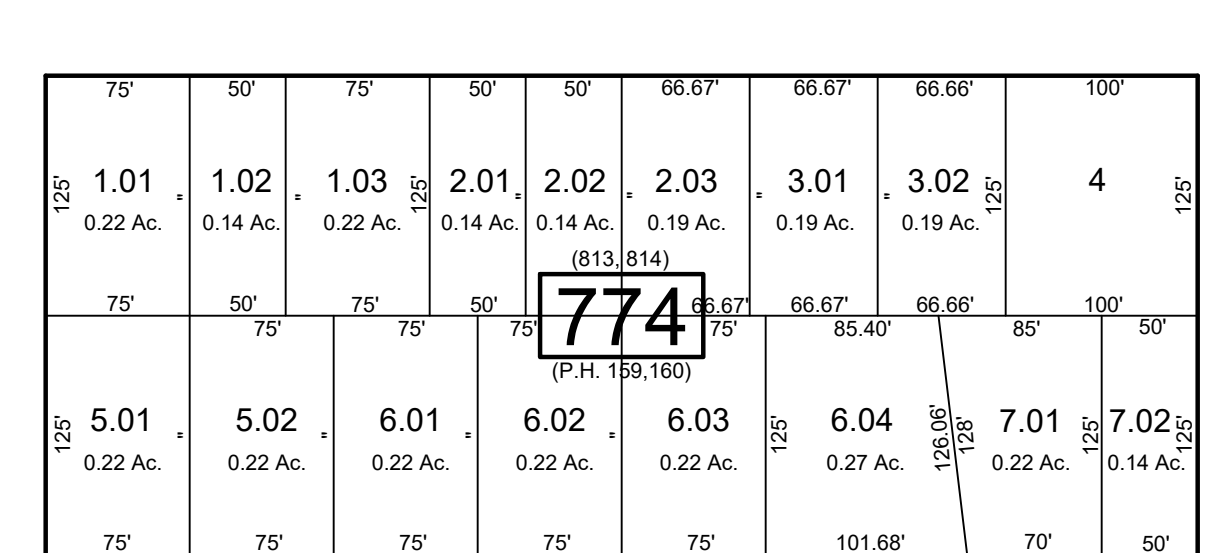
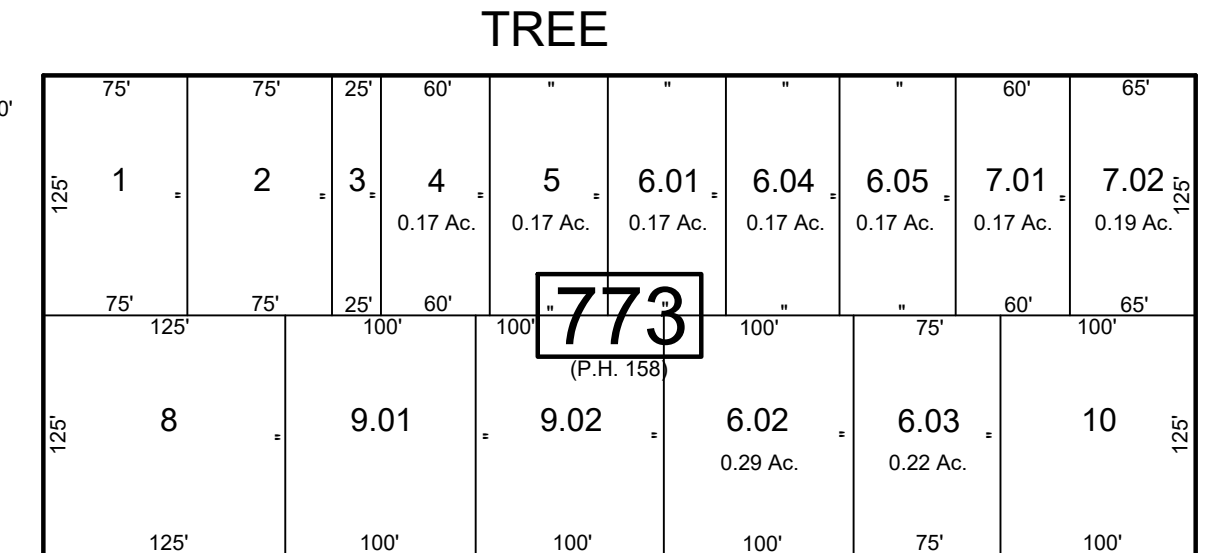
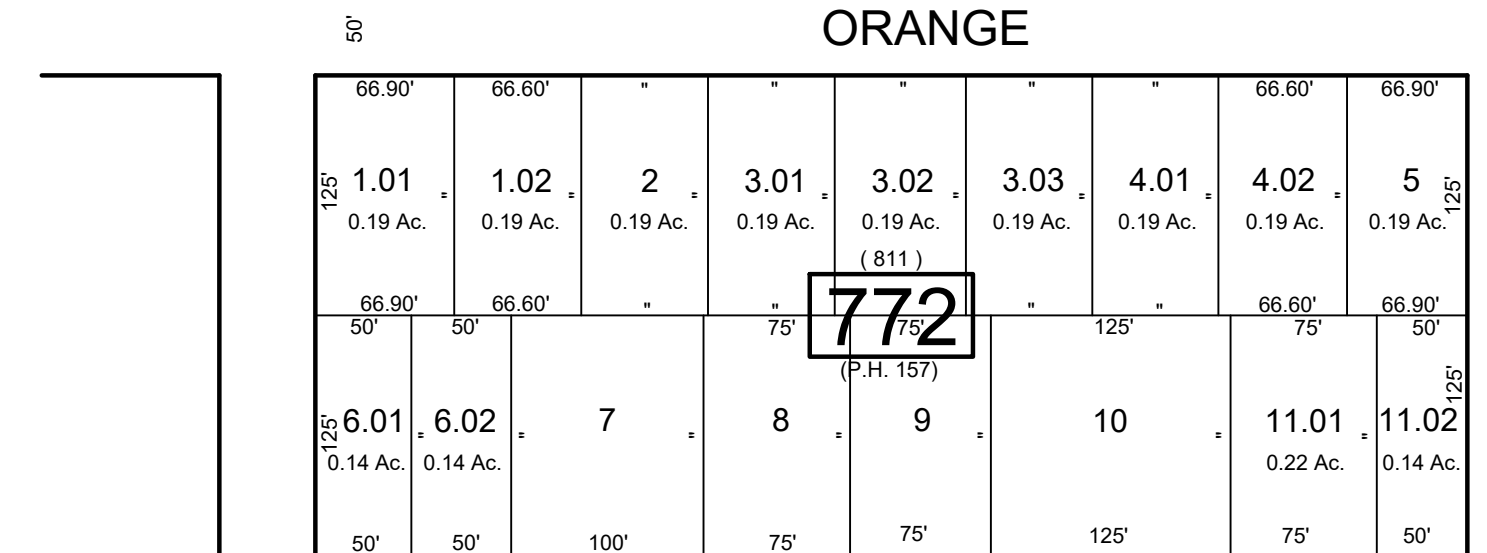
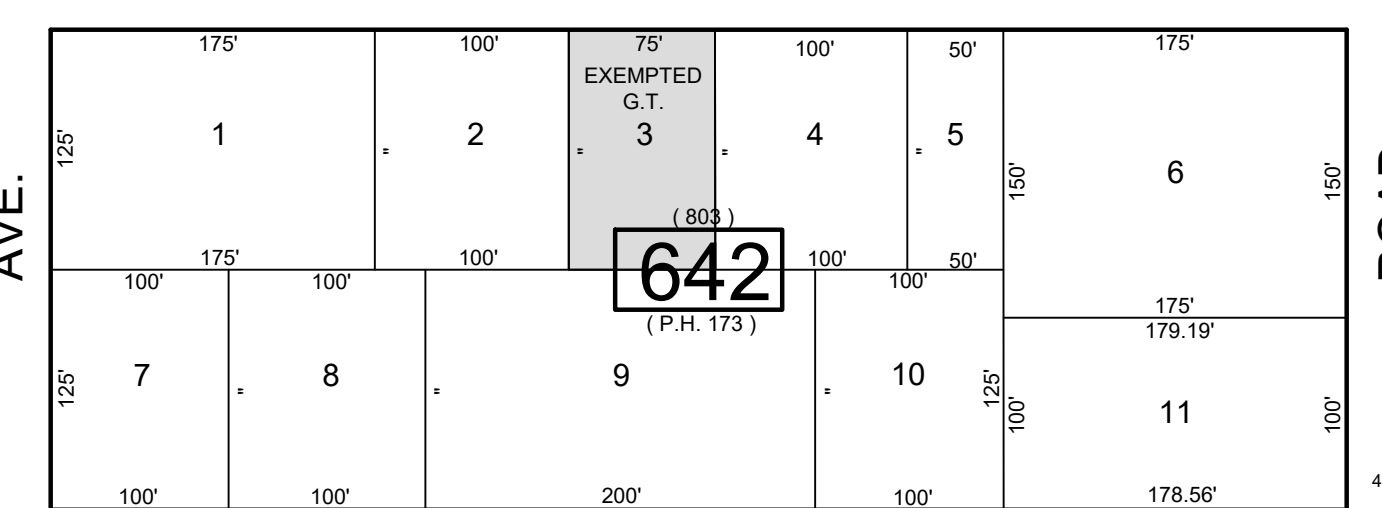
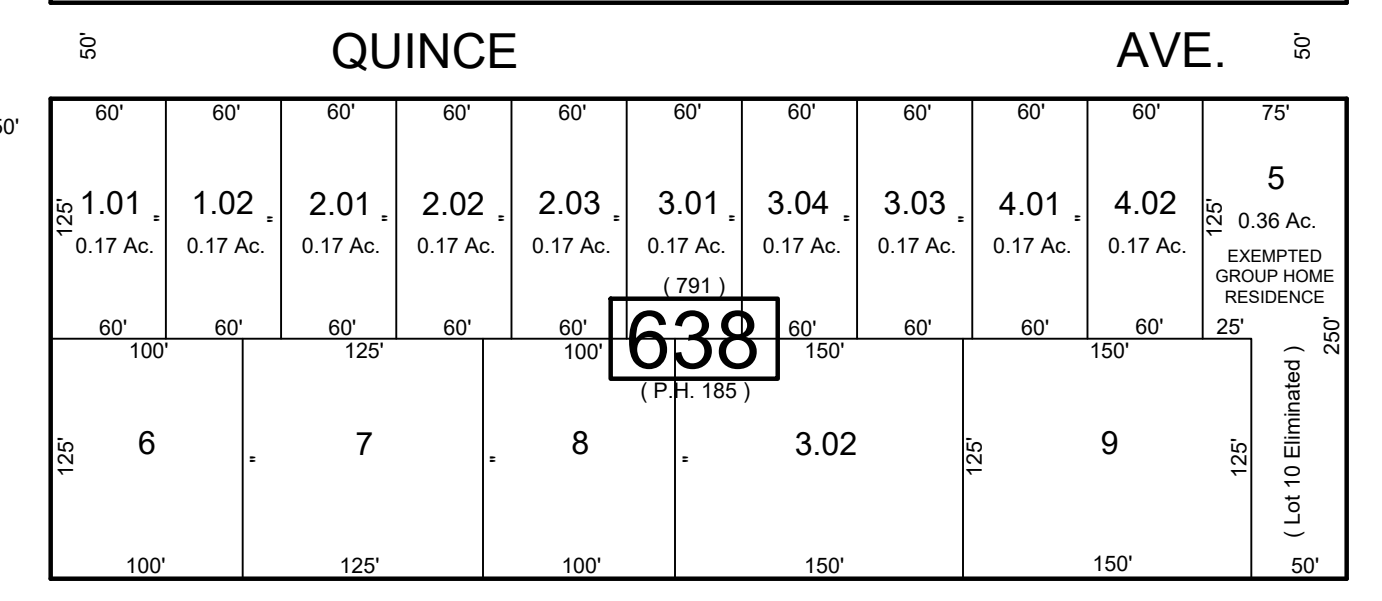
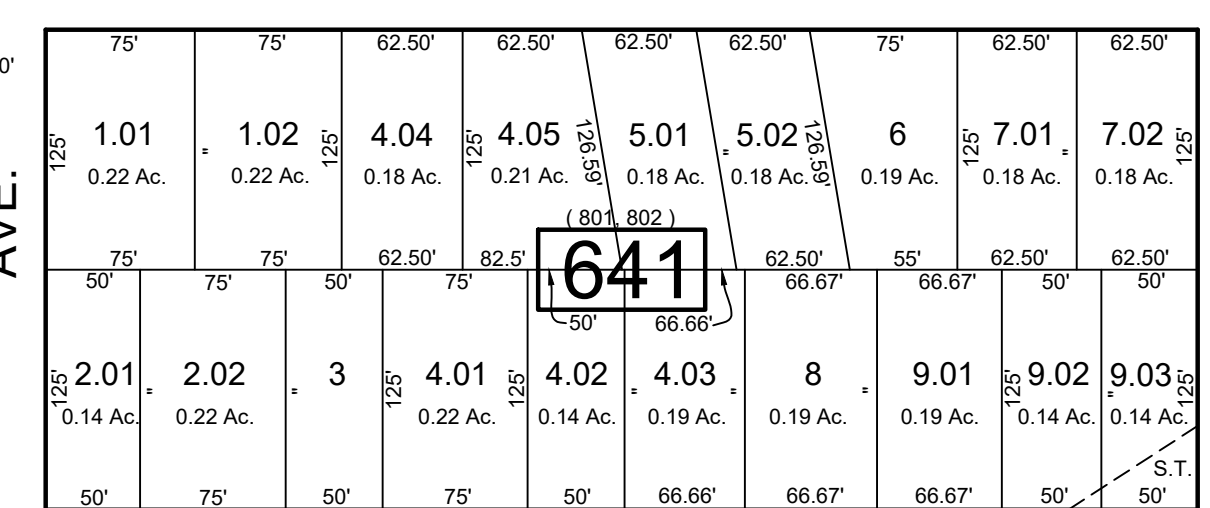
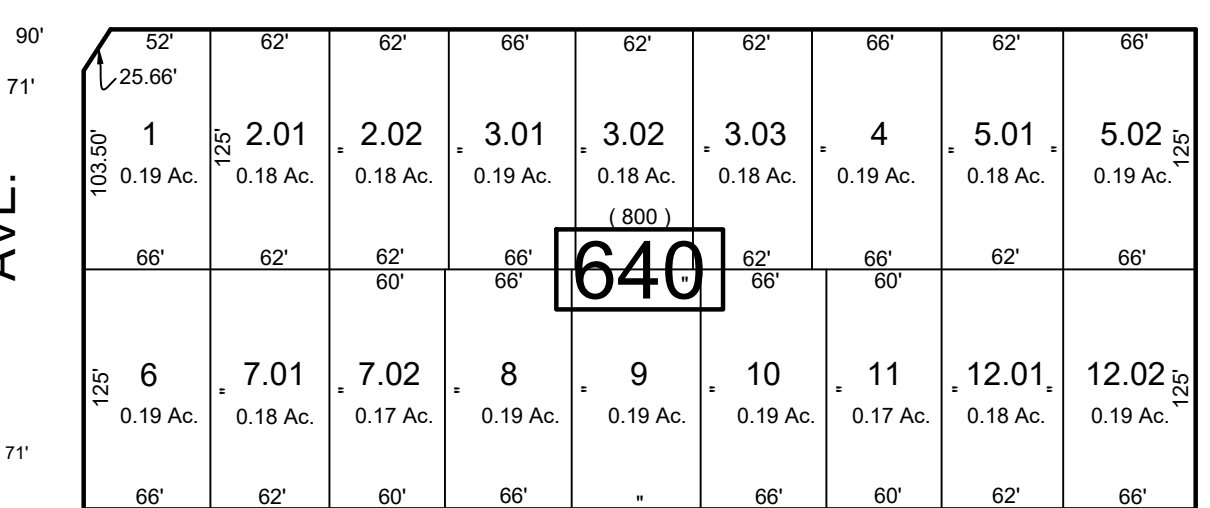
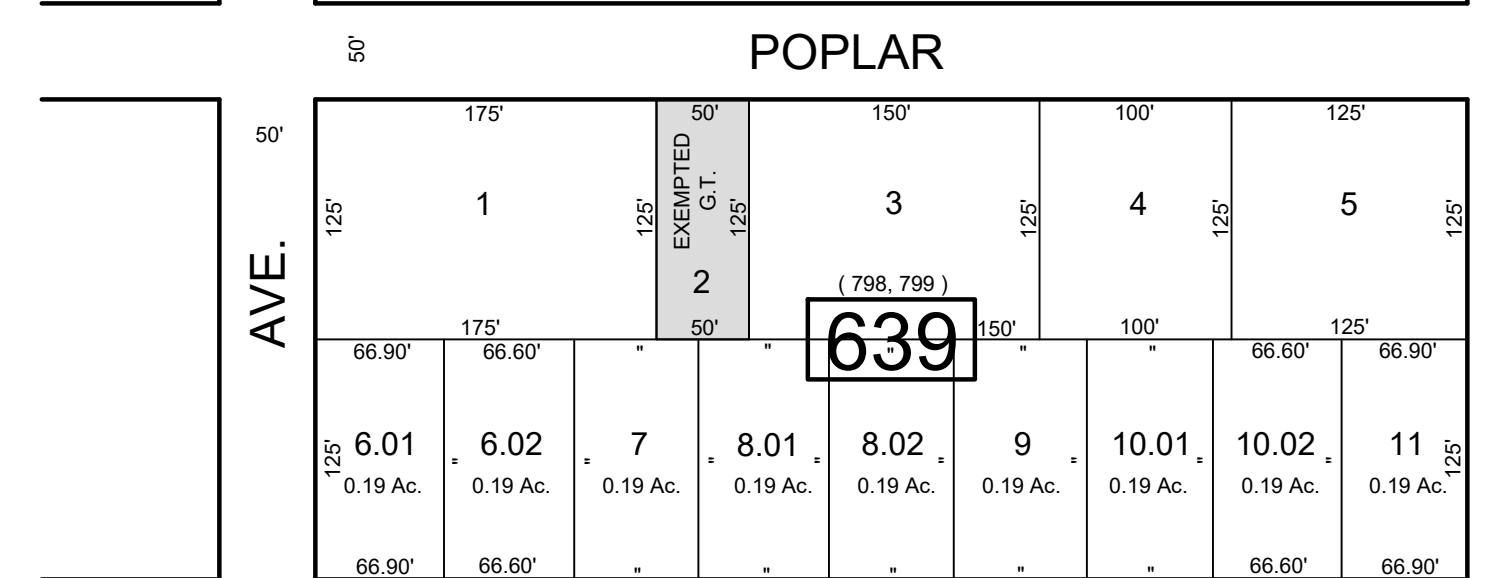
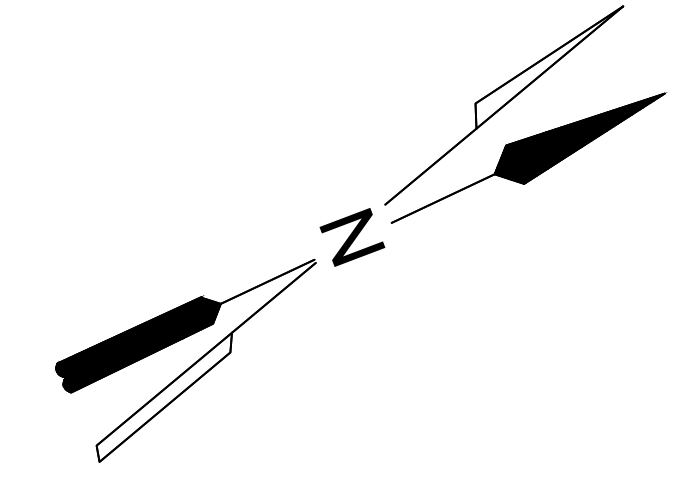


REVISIONS		
DATE	NAME	NO.
Aug. 2008	Dixon Assoc.	1
8-15-19	J.Boney NJ Lic #31264	2

SHEET 16.08



THIS SHEET HAS BEEN DRAWN USING COMPUTER AIDED DRAFTING / DESIGN (CAD/D) AND WAS DONE UNDER THE SUPERVISION OF SAMUEL S. PREVITERA, P.L.S., NEW JERSEY PROFESSIONAL LAND SURVEYOR LICENSE NO. 38976, AND DATED DECEMBER 31, 2006.

NOTE: LETTERS "PH" INDICATES NUMBERS ON MAP OF "PINEHURST" BY PINEHURST DEV. CO. LETTERS "G.T." INDICATES GALLOWAY TOWNSHIP OWNED PROPERTY.

SHEET 20.03

FILMORE

COOLIDGE

BUCHANAN

ADAMS

LEEDS

JIMMIE

SHEET 21

TAX MAP
TOWNSHIP OF GALLOWAY
 ATLANTIC COUNTY, NEW JERSEY
 SCALE: 1" = 100' JANUARY 2007
 SAMUEL S. PREVITERA, P.L.S.
 N.J. LIC. No. 38976
 26 NORTH ROUTE 73, SUITE 200
 CEDAR BROOK, N.J. 08018