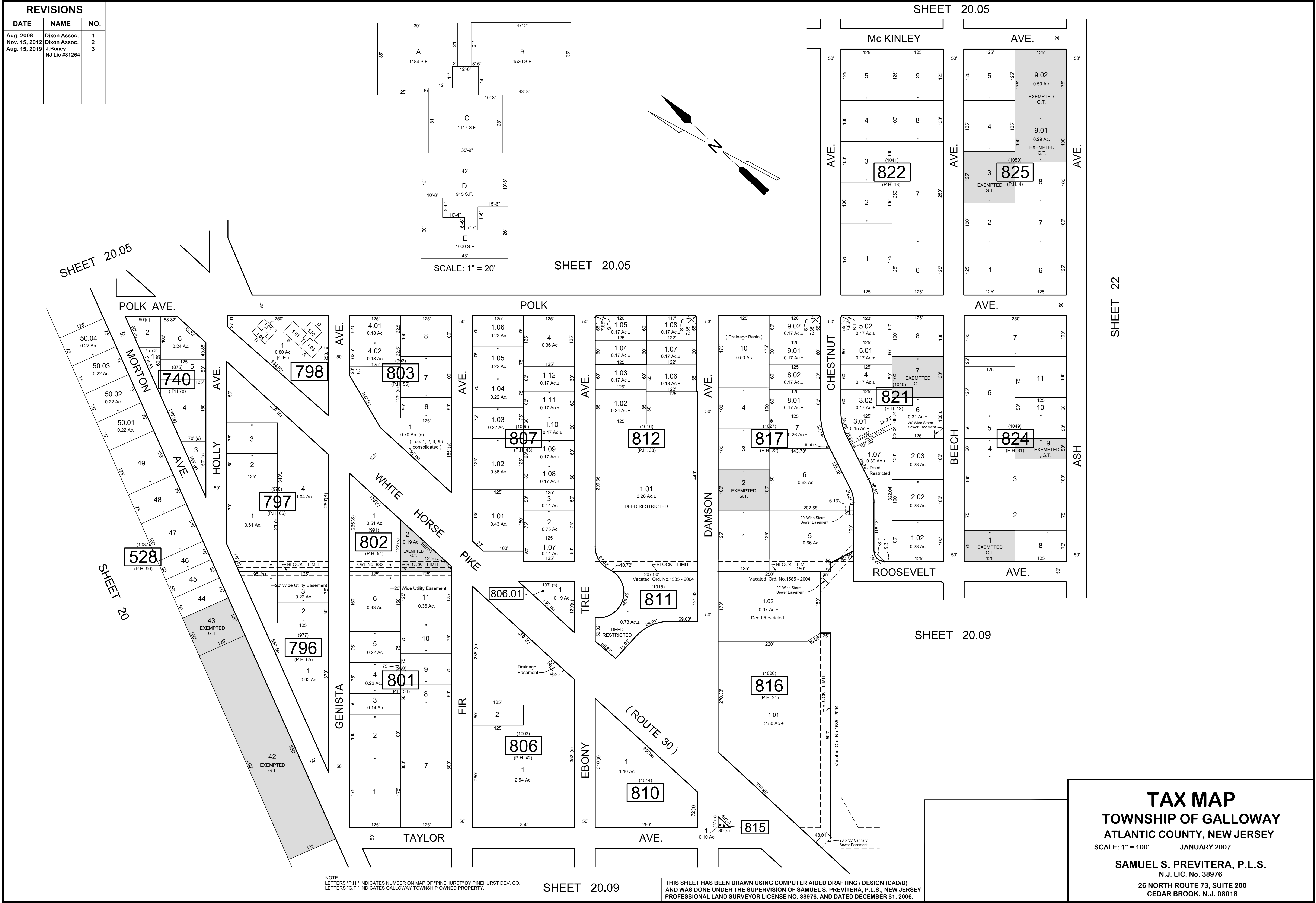


REVISIONS		
DATE	NAME	NO.
Aug. 2008	Dixon Assoc.	1
Nov. 15, 2012	Dixon Assoc.	2
Aug. 15, 2019	J.Boney NJ Lic #31264	3



NOTE:  
LETTERS "P.H." INDICATES NUMBER ON MAP OF "PINEHURST" BY PINEHURST DEV. CO.  
LETTERS "G.T." INDICATES GALLOWAY TOWNSHIP-OWNED PROPERTY.

THIS SHEET HAS BEEN DRAWN USING COMPUTER AIDED DRAFTING / DESIGN (CAD/D) AND WAS DONE UNDER THE SUPERVISION OF SAMUEL S. PREVITERA, P.L.S., NEW JERSEY PROFESSIONAL LAND SURVEYOR LICENSE NO. 38976, AND DATED DECEMBER 31, 2006.

**TAX MAP**  
**TOWNSHIP OF GALLOWAY**  
 ATLANTIC COUNTY, NEW JERSEY  
 SCALE: 1" = 100' JANUARY 2007  
**SAMUEL S. PREVITERA, P.L.S.**  
 N.J. LIC. No. 38976  
 26 NORTH ROUTE 73, SUITE 200  
 CEDAR BROOK, N.J. 08018

SHEET 20.05

SHEET 20.05

SHEET 20.05

SHEET 20.09

SHEET 20.09

SHEET 22

SHEET 20