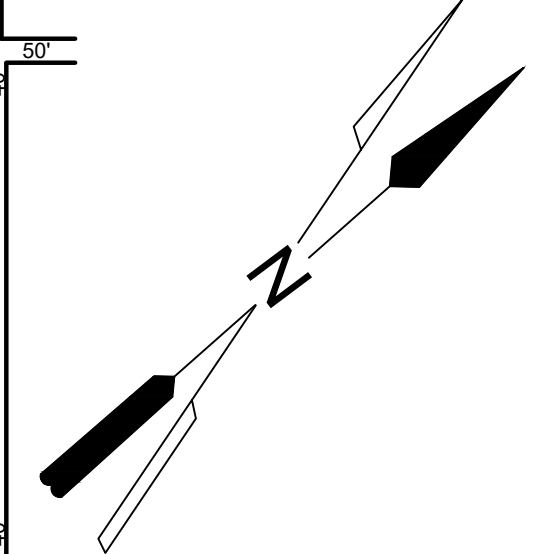
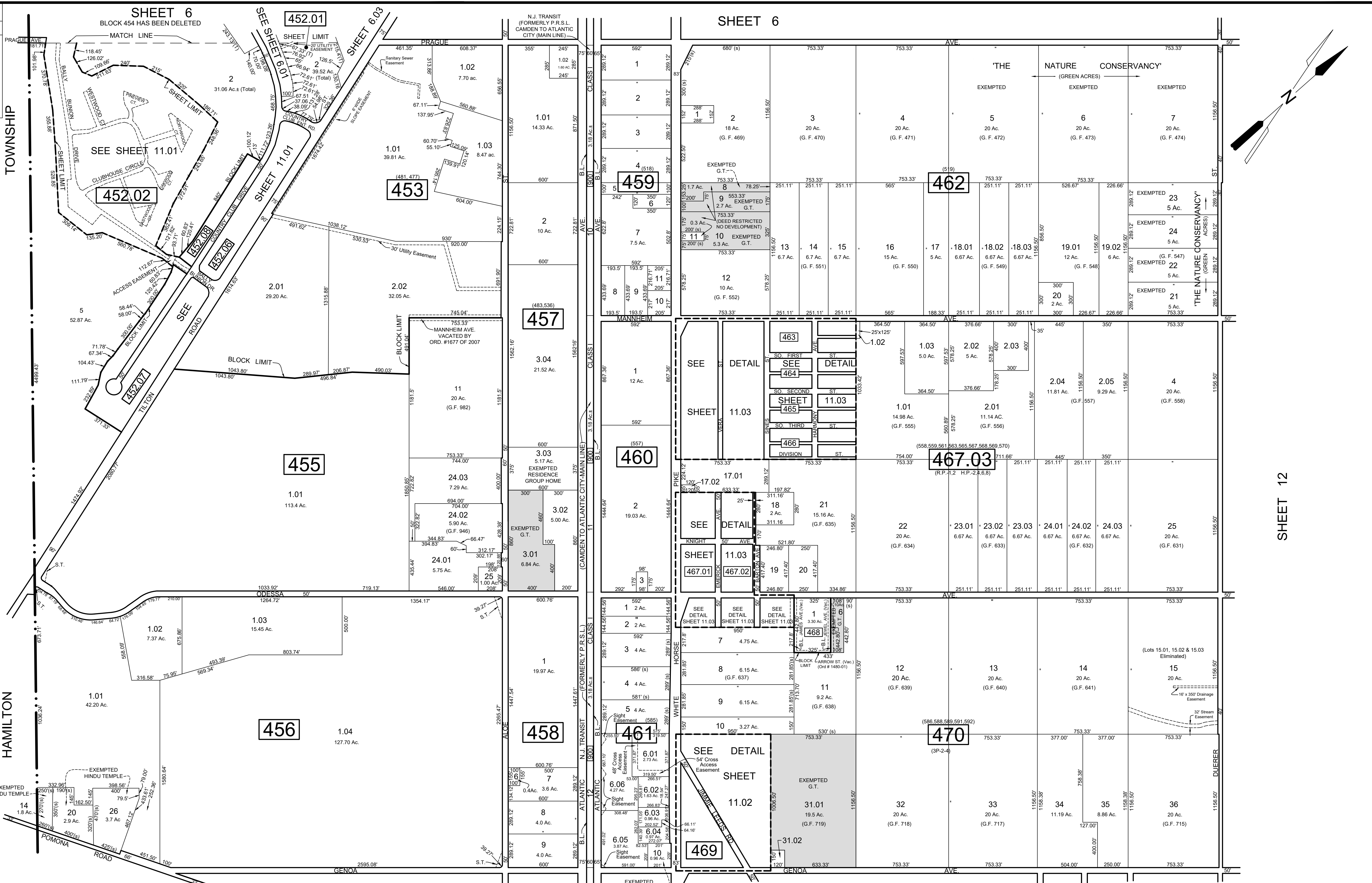


REVISIONS		
DATE	NAME	NO.
Aug. 2008	Dixon Assoc.	1
Nov. 15, 2012	Dixon Assoc.	2
Feb. 5, 2015	James Boney PLS #31264	3
Aug. 15, 2019	James Boney PLS #31264	4
Oct. 18, 2023	James Boney PLS #31264	5



NOTE:  
 LETTERS "P.P." INDICATES NUMBER ON MAP OF "POMONA PARK" BY LOUISA A. SINES  
 LETTERS "H.P." INDICATES NUMBER ON MAP OF "HARMONY PARK" ESTATES BY ARTHUR GERSON  
 LETTER "P" INDICATES NUMBER ON MAP OF "POMONA" BY C.P. GEHRING  
 LETTER "2P" INDICATES NUMBER ON MAP OF "POMONA 2nd EXT." BY G.P. GEHRING  
 LETTER "3P" INDICATES NUMBER ON MAP OF "POMONA 3rd EXT." BY G.P. GEHRING  
 LETTERS "G.T." INDICATES GALLOWAY TOWNSHIP OWNED PROPERTY.

SHEET 16

SHEET 12

**TAX MAP**  
**TOWNSHIP OF GALLOWAY**  
 ATLANTIC COUNTY NEW JERSEY  
 SCALE: 1" = 400' JANUARY 2007  
**SAMUEL S. PREVITERA, P.L.S.**  
 N.J. LIC. No. 38976  
 26 NORTH ROUTE 73, SUITE 200  
 CEDAR BROOK, N.J. 08018

THIS SHEET HAS BEEN DRAWN USING COMPUTER AIDED DRAFTING / DESIGN (CAD/D) AND WAS DONE UNDER THE SUPERVISION OF SAMUEL S. PREVITERA, P.L.S., NEW JERSEY PROFESSIONAL LAND SURVEYOR LICENSE NO. 38976, AND DATED DECEMBER 31, 2006.