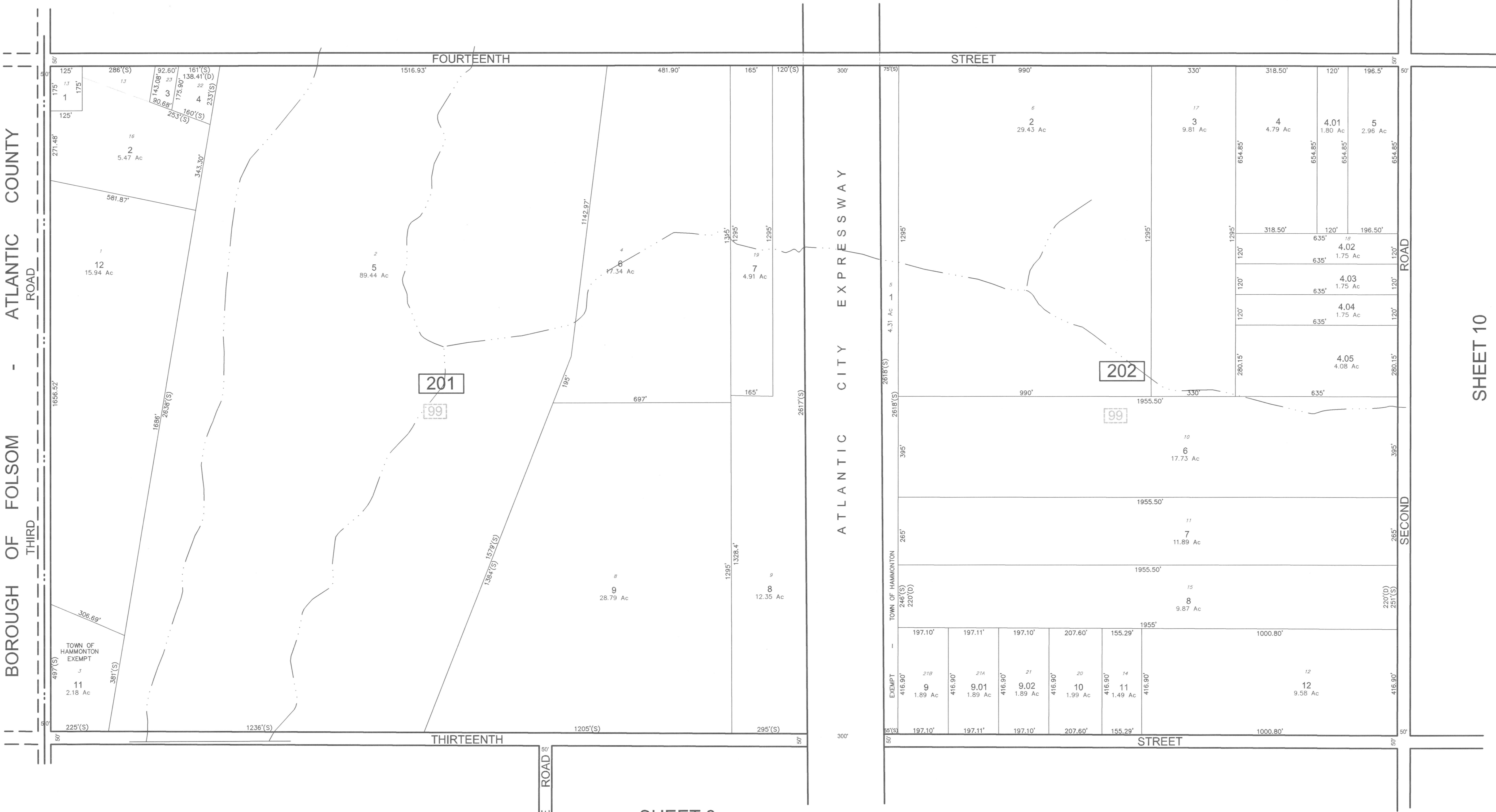


SHEET 1

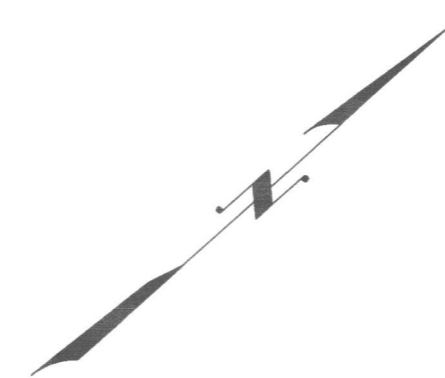


SHEET 10

SHEET 3

* THIS SHEET HAS BEEN DRAWN USING COMPUTER AIDED DRAFTING/ DESIGN (CAD/D) AND COORDINATE GEOMETRY (COGO).

| REVISIONS | | | | |
|-----------|----|--------|-------|-----|
| DATE | BY | LIC.NO | BLOCK | LOT |
| | | | | |
| | | | | |
| | | | | |
| | | | | |
| | | | | |
| | | | | |
| | | | | |
| | | | | |
| | | | | |
| | | | | |



THIS MAP WAS FORMALLY CERTIFIED BY THE DIVISION OF TAXATION ON SEPTEMBER 6, 2013, SIGNED BY SUE DAVISON, CTA AND ASSIGNED SERIAL NUMBER 1024

TAX MAP
TOWN OF HAMMONTON
 ATLANTIC COUNTY NEW JERSEY
 SCALE: 1" = 200' DATE: NOVEMBER 2012
CHARLES A. ATKINSON
 LICENSED LAND SURVEYOR
 NEW JERSEY LICENSE NO. 33994
 850 SO. WHITE HORSE PIKE
 HAMMONTON, NEW JERSEY 08037
 COA# 24GA27973300
 TO SHOW CONDITIONS AS OF APRIL 2013