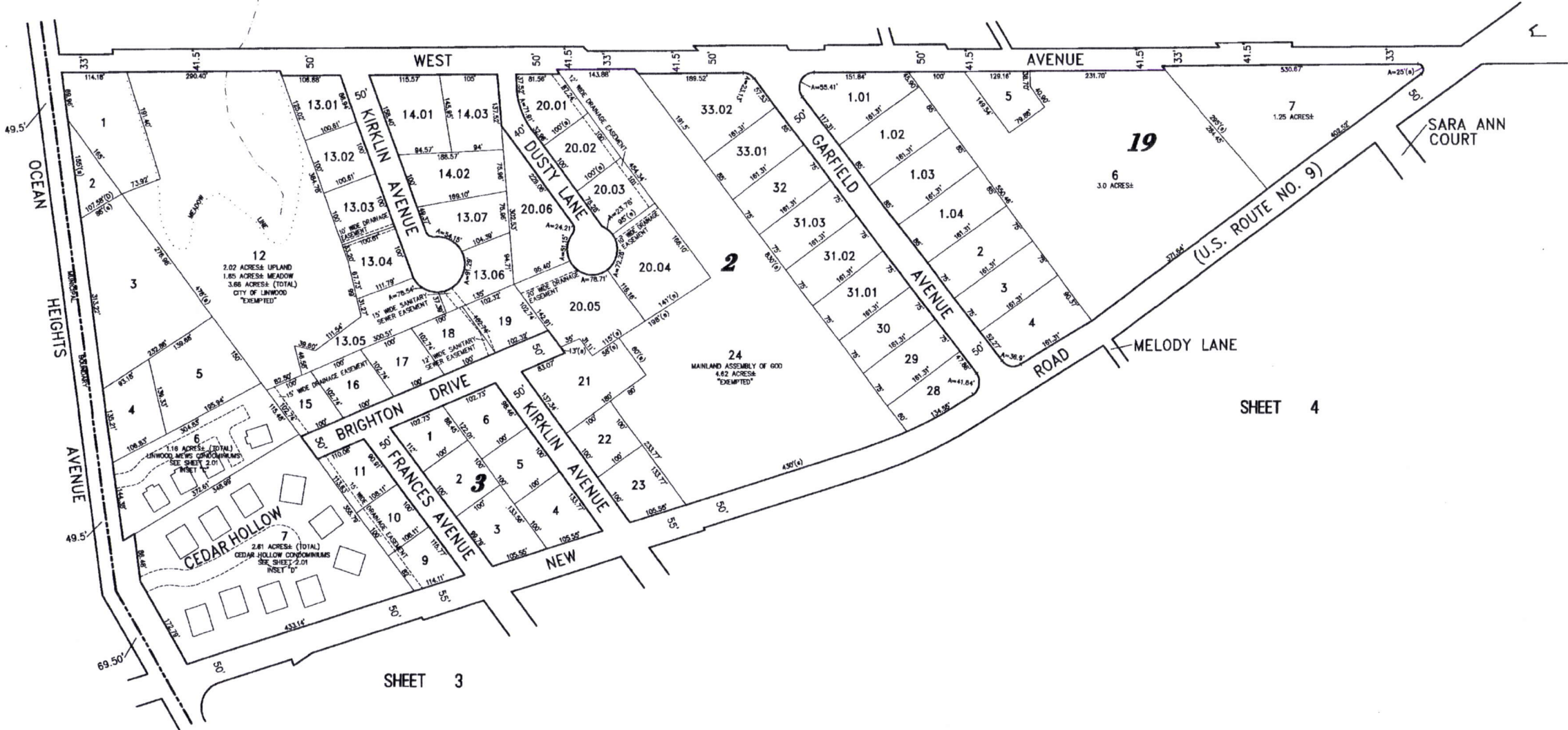


SHEET 1

CITY OF SOMERS POINT



SHEET 4

SHEET 3

269

**TAX MAP
CITY OF LINWOOD**

ATLANTIC COUNTY NEW JERSEY
SCALE: 1" = 100' DATE: 6-1-2002

CRAIG F. REMINGTON LAND SURVEYOR LIC. NO. 23924

RVW REMINGTON, VERNICK & WALBERG ENGINEERS
24 GA 28048700
845 N. MAIN STREET, PLEASANTVILLE, NJ 08232
(609) 645-710, FAX (609) 645-7076
WEB SITE ADDRESS: WWW.RVE.COM