

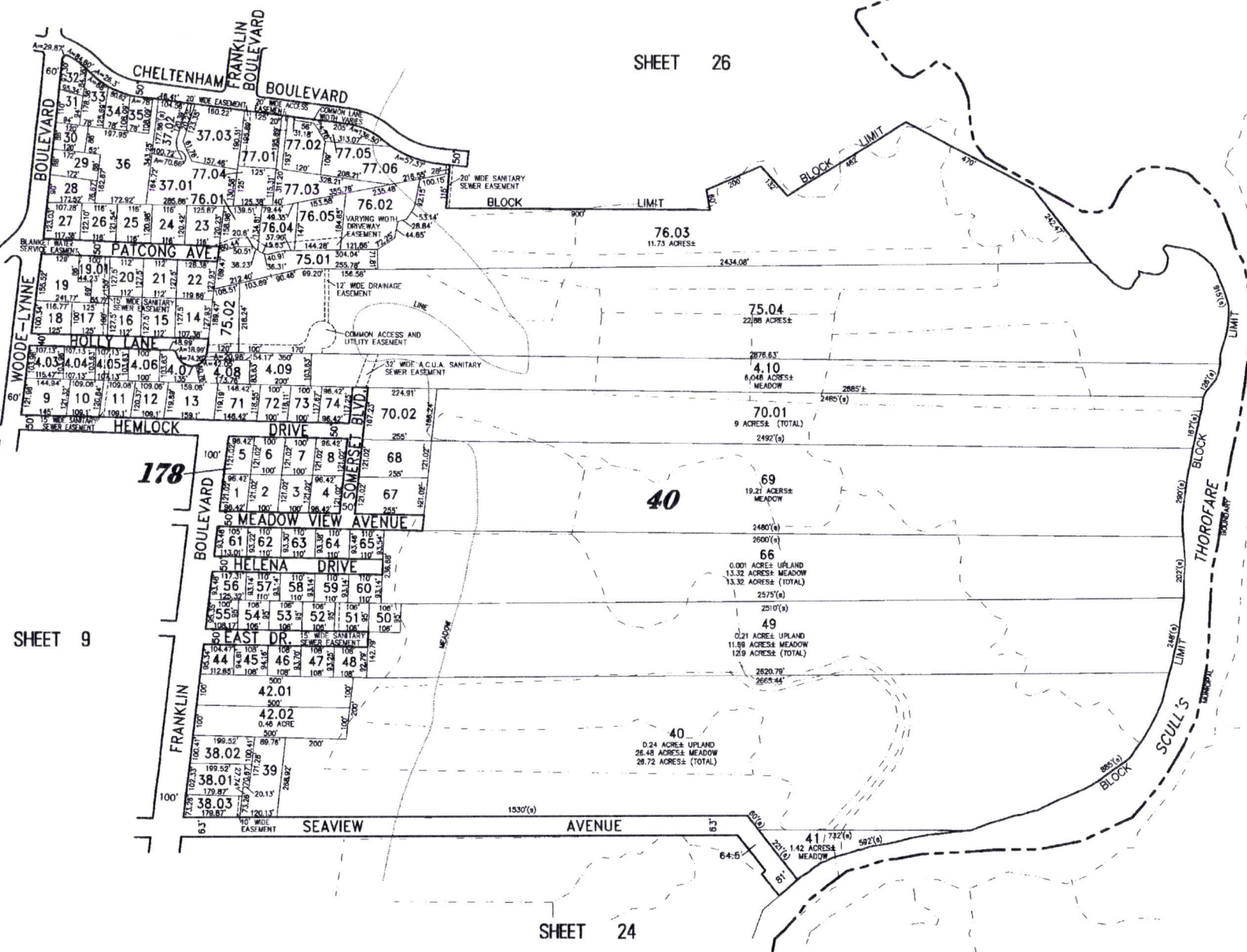
SHEET 12

SHEET 12

SHEET 26

SHEET 12

HEMLOCK DRIVE



SHEET 9

SHEET 24

TOWNSHIP OF EGG HARBOR

297

TAX MAP CITY OF LINWOOD

ATLANTIC COUNTY NEW JERSEY
SCALE: 1" = 200' DATE: 6-1-2002

CRAIG F. REMINGTON LAND SURVEYOR LIC. NO. 23924

RV & W
REMINGTON, VERNICK & WALBERG ENGINEERS
846 N. MAIN STREET, PLEASANTVILLE, N.J. 08232
(609) 645-7070 FAX (609) 645-7076
WEB SITE ADDRESS: WWW.RVW.COM