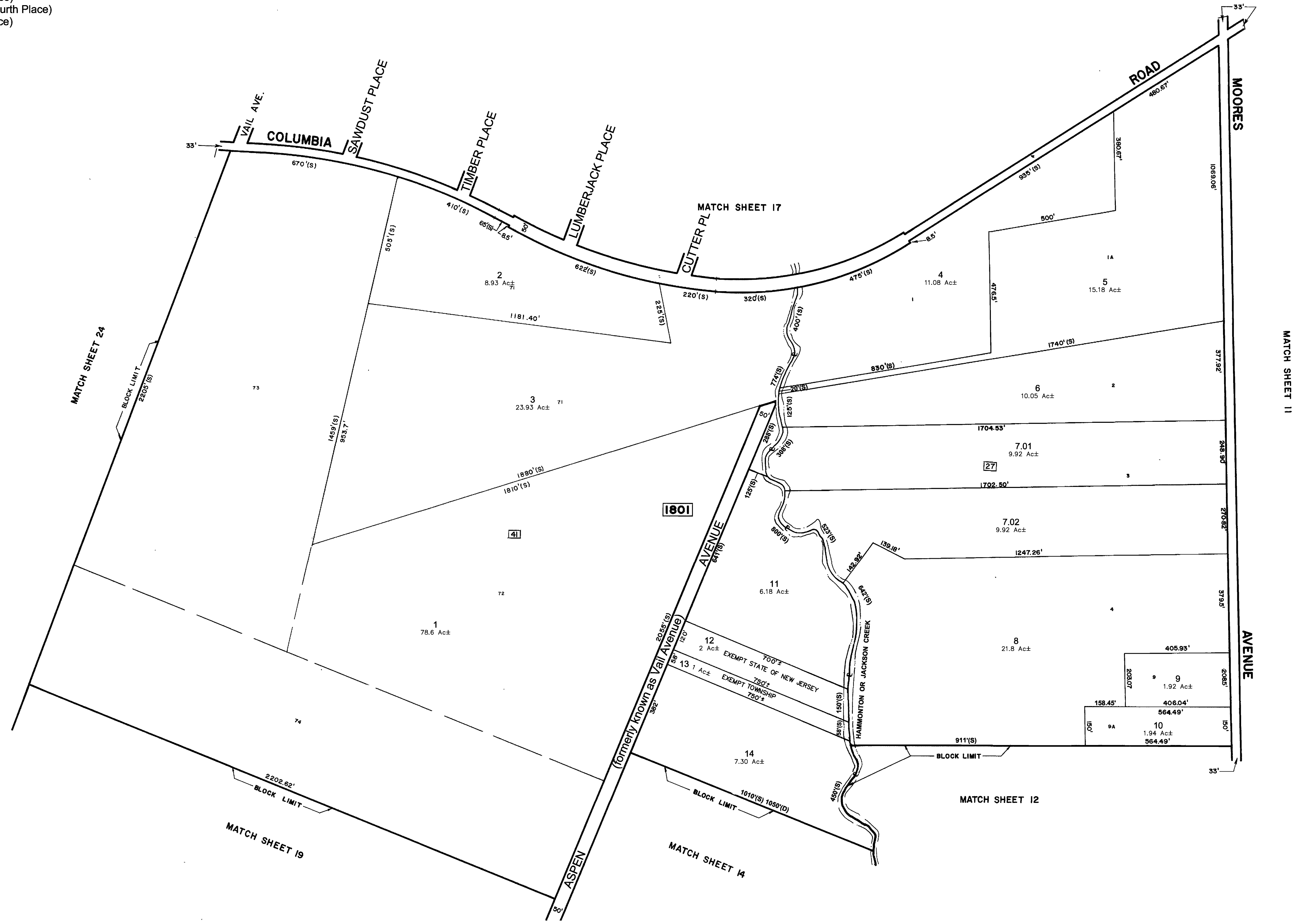
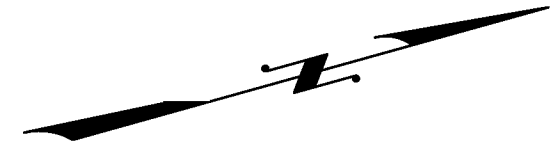


NOTES:
 ASPEN AVE - (formerly known as Vail Avenue)
 SAWDUST PLACE - (formerly known as Second Place)
 TIMBER PLACE - (formerly known as Third Place)
 LUMBERJACK PLACE - (formerly known as Fourth Place)
 CUTTER PLACE - (formerly known as Fifth Place)



* THIS MAP IS A SCANNED COPY OF THE ORIGINAL MAP PREPARED BY CHRIS R. REHMANN DATED 1983. THE ORIGINAL APPROVED MAP IS ON FILE IN THE ENGINEERS' OFFICE.

REVISIONS				
DATE	BY	LIC.NO	BLOCK	LOT
7/1991	R.V.			

THIS MAP WAS FORMALLY CERTIFIED BY THE DIVISION OF TAXATION ON MARCH 14, 1984, SIGNED BY IVAN HAFTKOWITCZ AND ASSIGNED SERIAL NUMBER 630

TAX MAP
TOWNSHIP OF MULLICA
 ATLANTIC COUNTY
 SCALE: 1" = 200'
 NEW JERSEY
 DATE: NOVEMBER 1983
CHRIS R. REHMANN
 PROFESSIONAL ENGINEER LAND SURVEYOR
 NEW JERSEY LICENSE NO. 17119
 850 SO. WHITE HORSE PIKE
 HAMMONTON, NEW JERSEY 08037
 CO#P 24GA27973300
 TO SHOW CONDITIONS AS OF FEBRUARY 1, 2017