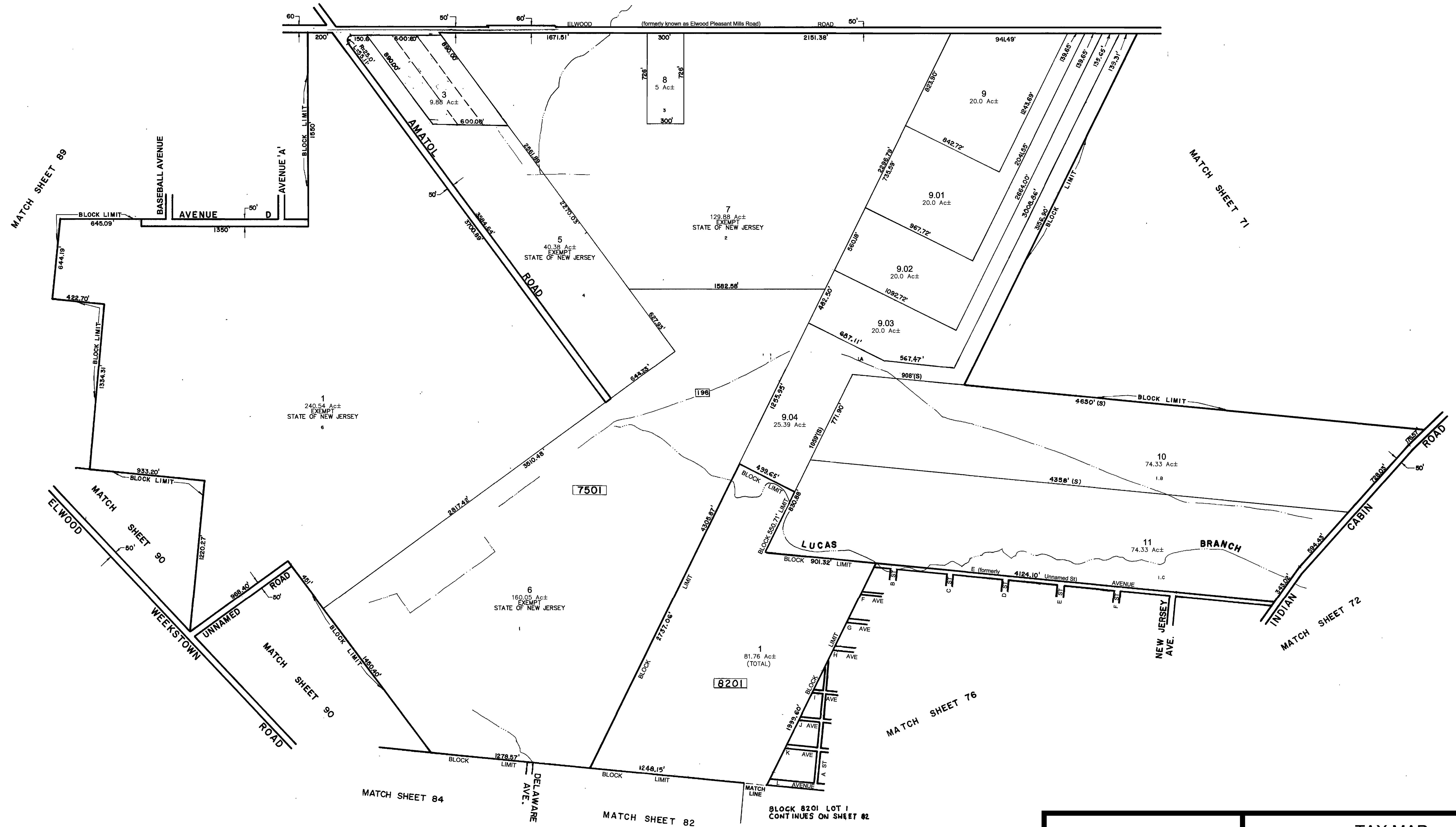
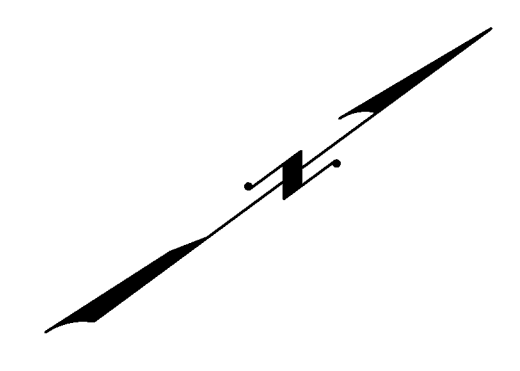


MATCH SHEET 24



* THIS MAP IS A SCANNED COPY OF THE ORIGINAL MAP PREPARED BY CHRIS R. REHMANN DATED 1983. THE ORIGINAL APPROVED MAP IS ON FILE IN THE ENGINEERS OFFICE.

REVISIONS				
DATE	BY	LIC.NO	BLOCK	LOT
7/1991	R.V			
12/2003	A.T.			
10/2012	ED CLAY	34842	7501	3
2/2014	ED CLAY	34842	8201,7501	9.04
02/2017	ED CLAY	34842	Elwood Pleasant Mills Rd to Elwood Rd.	

THIS MAP WAS FORMALLY CERTIFIED BY THE DIVISION OF TAXATION ON MARCH 14, 1984, SIGNED BY IVAN HAFTKOWITCZ AND ASSIGNED SERIAL NUMBER 630

TAX MAP
TOWNSHIP OF MULLICA
 ATLANTIC COUNTY
 SCALE: 1" = 400'
 NEW JERSEY
 DATE: NOVEMBER 1983
CHRIS R. REHMANN
 PROFESSIONAL ENGINEER LAND SURVEYOR
 NEW JERSEY LICENSE NO. 17119
 850 SO. WHITE HORSE PIKE
 HAMMONTON, NEW JERSEY 08037
 CO#P 24GA27973300
 TO SHOW CONDITIONS AS OF FEBRUARY 1, 2017