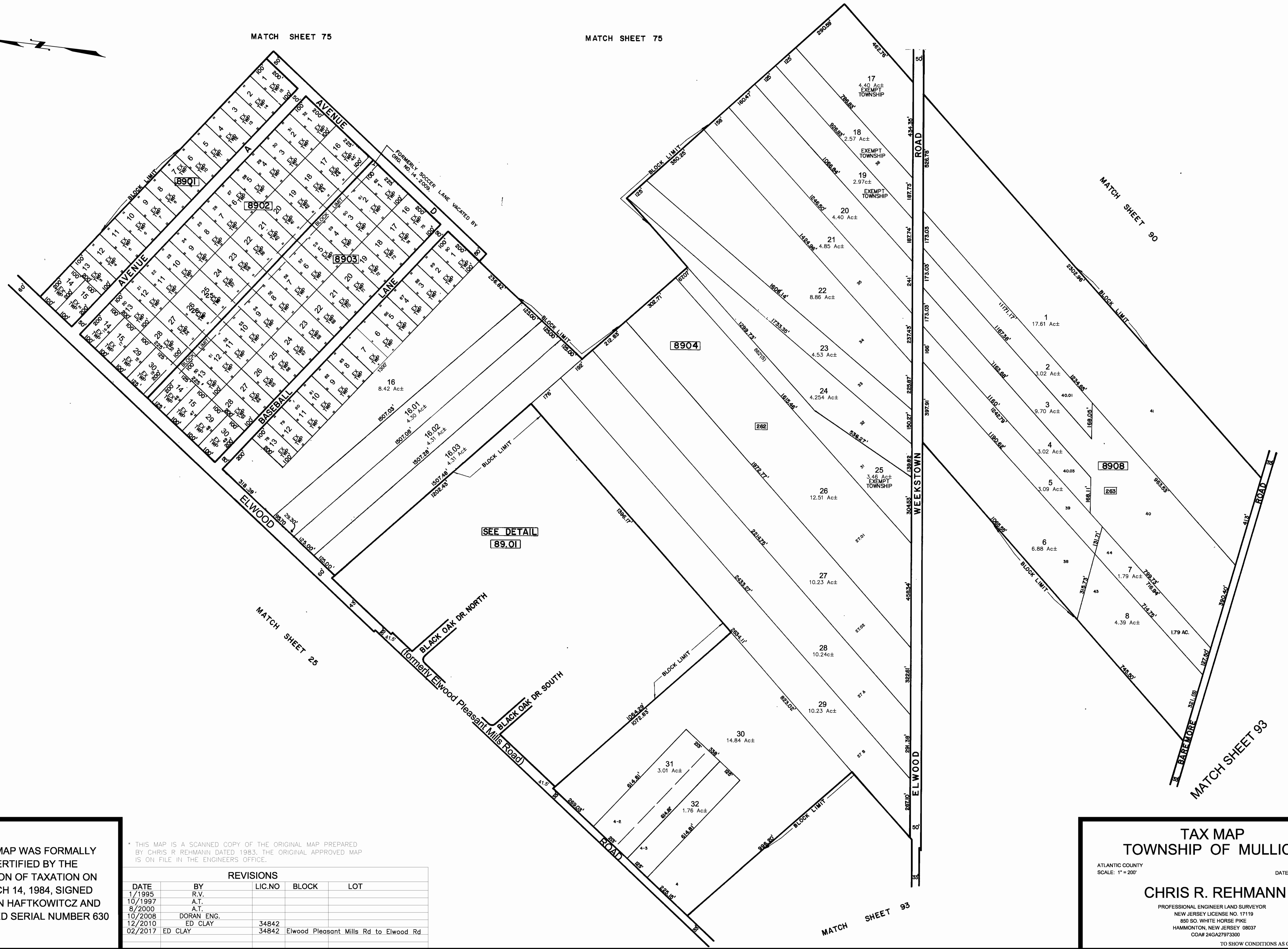




MATCH SHEET 75

MATCH SHEET 75



THIS MAP WAS FORMALLY CERTIFIED BY THE DIVISION OF TAXATION ON MARCH 14, 1984, SIGNED BY IVAN HAFTKOWITZ AND ASSIGNED SERIAL NUMBER 630

* THIS MAP IS A SCANNED COPY OF THE ORIGINAL MAP PREPARED BY CHRIS R. REHMANN DATED 1983. THE ORIGINAL APPROVED MAP IS ON FILE IN THE ENGINEERS OFFICE.

REVISIONS				
DATE	BY	LIC.NO	BLOCK	LOT
1/1995	R.V.			
10/1997	A.T.			
8/2000	A.T.			
10/2008	DORAN ENG.			
12/2010	ED CLAY	34842		
02/2017	ED CLAY	34842	Elwood Pleasant Mills Rd to Elwood Rd	

TAX MAP
TOWNSHIP OF MULLICA

ATLANTIC COUNTY
SCALE: 1" = 200'

NEW JERSEY
DATE: NOVEMBER 1983

CHRIS R. REHMANN

PROFESSIONAL ENGINEER LAND SURVEYOR
NEW JERSEY LICENSE NO. 17119
850 SO. WHITE HORSE PIKE
HAMMONTON, NEW JERSEY 08037
CO# 24GA2973300

TO SHOW CONDITIONS AS OF FEBRUARY 1, 2017