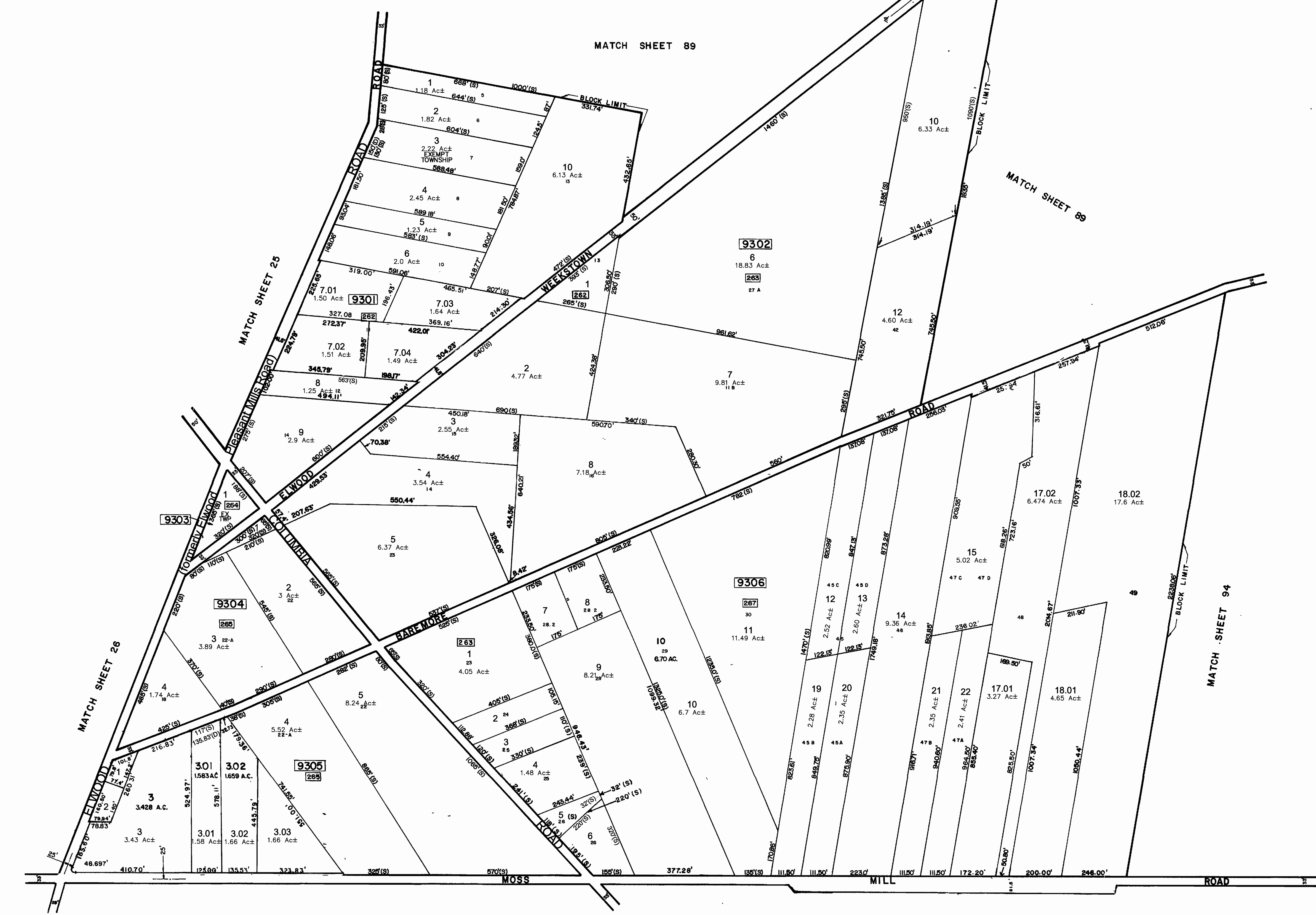
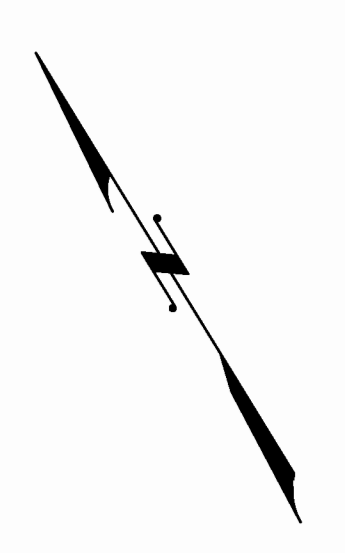


REVISIONS				
DATE	BY	LIC.NO	BLOCK	LOT
7/1991	R.V.			
1/1992	R.V.			
1/1995	R.V.			
11/1995	R.V.			
10/1997	A.T., PA		9301	7.01,7.03
11/2001	A.T., PA			
3/2004	A.T., PA			
10/2006	DORAN ENG.			
12/2007	DORAN ENG.			
02/2017	ED CLAY	34842	Elwood Pleasant Mills Rd to Elwood Rd	

* THIS MAP IS A SCANNED COPY OF THE ORIGINAL MAP PREPARED BY CHRIS R. REHMANN DATED 1983. THE ORIGINAL APPROVED MAP IS ON FILE IN THE ENGINEERS OFFICE.



THIS MAP WAS FORMALLY CERTIFIED BY THE DIVISION OF TAXATION ON MARCH 14, 1984, SIGNED BY IVAN HAFTKOWITZ AND ASSIGNED SERIAL NUMBER 630

TAX MAP
TOWNSHIP OF MULLICA

ATLANTIC COUNTY
SCALE: 1" = 200'

NEW JERSEY
DATE: NOVEMBER 1983

CHRIS R. REHMANN
PROFESSIONAL ENGINEER LAND SURVEYOR
NEW JERSEY LICENSE NO. 17119
850 SO. WHITE HORSE PIKE
HAMMONTON, NEW JERSEY 08037
CO#P 24GA27973300

TO SHOW CONDITIONS AS OF FEBRUARY 1, 2017