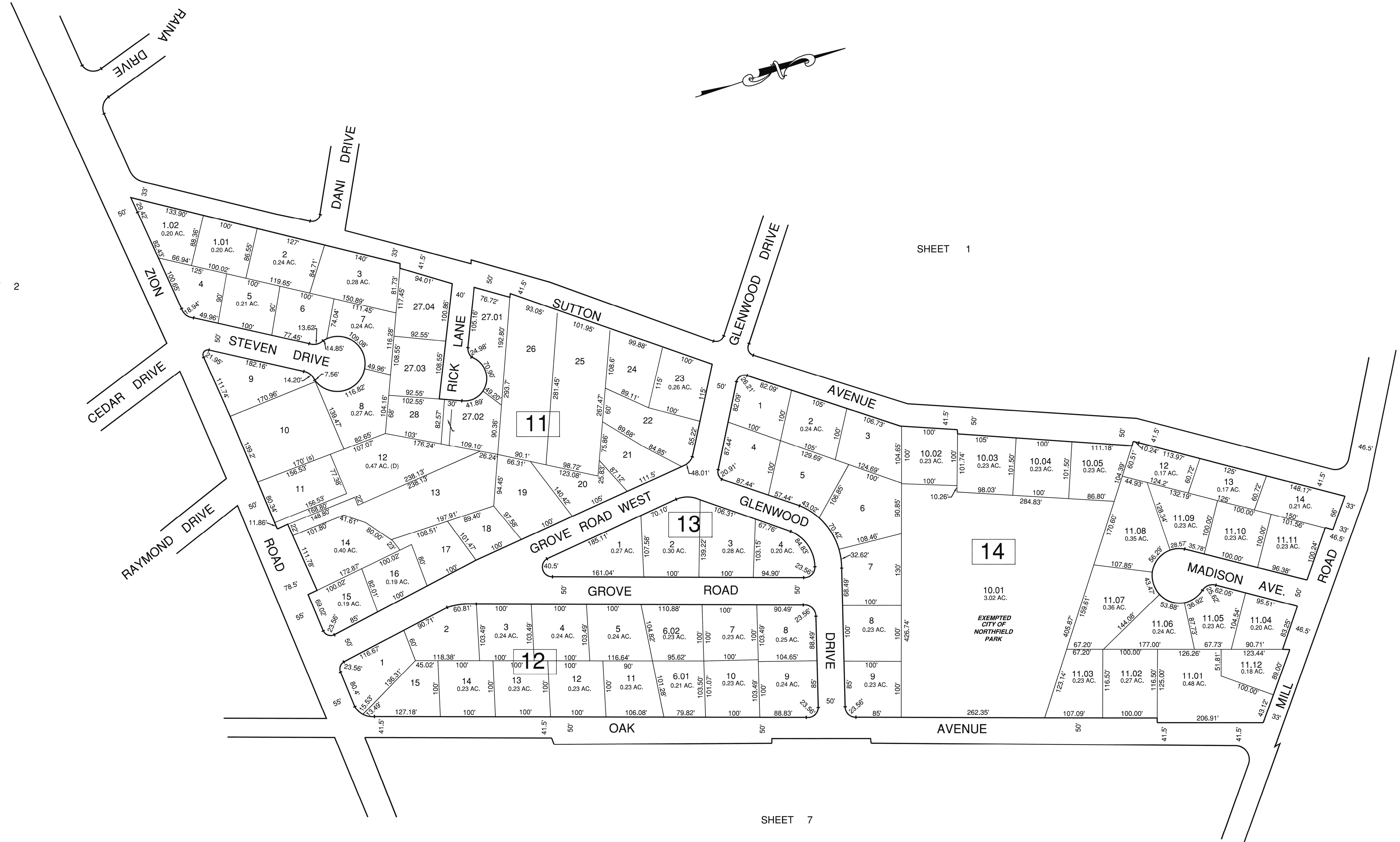


SHEET 2

SHEET 1

SHEET 4

SHEET 7



REVISIONS			
DATE	BY	LIC. No.	COMMENTS
07-19-23	HOWARD TRANSUE	33541	GENERAL CHANGES

THIS SHEET HAS BEEN DRAWN USING  
COMPUTER AIDED DRAFTING/DESIGN (CAD/D)

**TAX MAP**  
**CITY OF NORTHFIELD**

ATLANTIC COUNTY NEW JERSEY  
SCALE: 1"=100' JANUARY 2009

**MATTHEW F. DORAN P.E., P.L.S.**  
PROFESSIONAL ENGINEER & LAND SURVEYOR  
NEW JERSEY LICENSE NO. 28273  
840 NORTH MAIN STREET  
PLEASANTVILLE NEW JERSEY, 08232  
TO SHOW CONDITIONS OF JANUARY 1, 2009