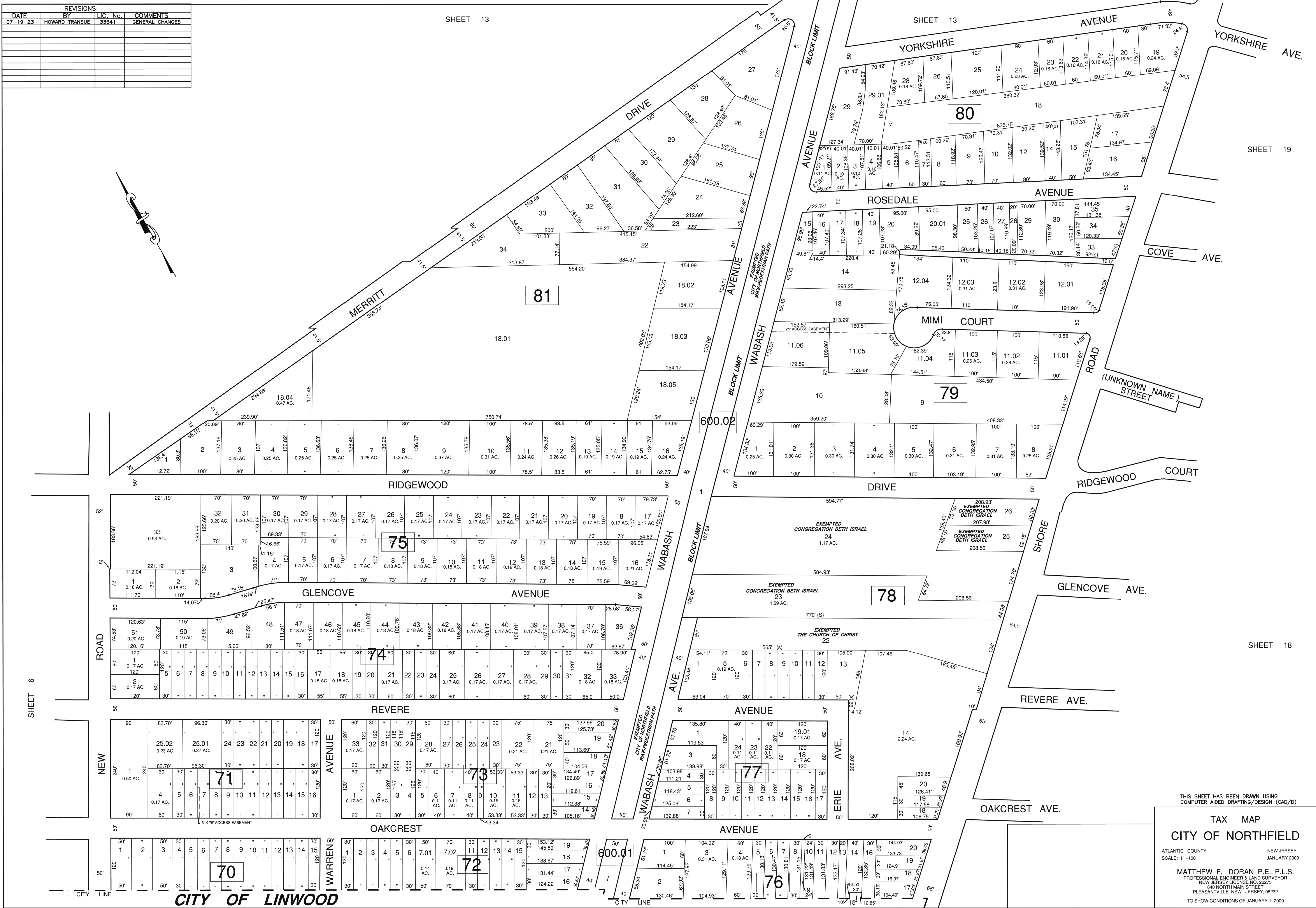
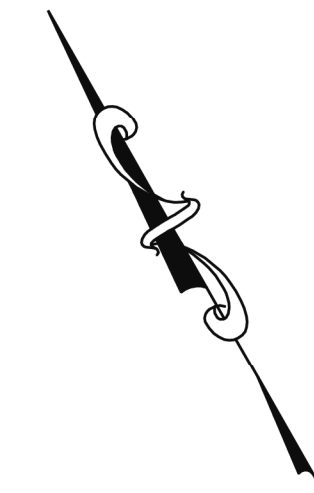


REVISIONS			
DATE	BY	LIC. No.	COMMENTS
07-19-23	HOWARD TRANSUE	33541	GENERAL CHANGES

SHEET 13

SHEET 13



SHEET 19

SHEET 18

THIS SHEET HAS BEEN DRAWN USING
COMPUTER AIDED DRAFTING/DESIGN (CAD/D)

TAX MAP
CITY OF NORTHFIELD

ATLANTIC COUNTY NEW JERSEY
SCALE: 1"=100' JANUARY 2009

MATTHEW F. DORAN P.E., P.L.S.
PROFESSIONAL ENGINEER & LAND SURVEYOR
NEW JERSEY LICENSE NO. 28273
840 NORTH MAIN STREET
PLEASANTVILLE, NEW JERSEY, 08232
TO SHOW CONDITIONS OF JANUARY 1, 2009