

REVISIONS			
DATE	BY	U.C. No.	COMMENTS
07-19-23	HOWARD TRANSUE	33541	GENERAL CHANGES
10-18-23	HOWARD TRANSUE	33541	BT43.L14
12-20-23	HOWARD TRANSUE	33541	GENERAL CHANGES

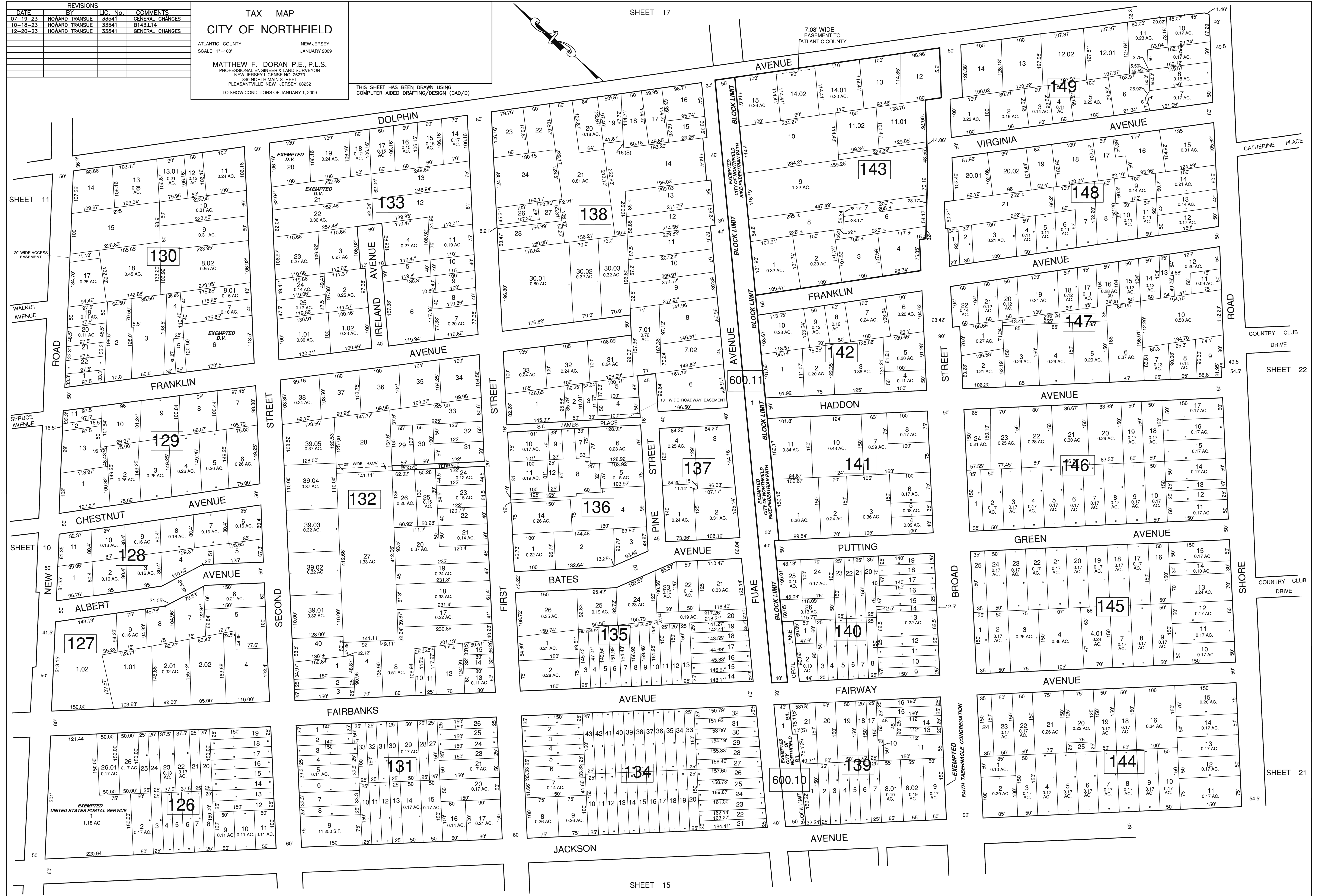
TAX MAP
CITY OF NORTHFIELD

ATLANTIC COUNTY NEW JERSEY
SCALE: 1"=100' JANUARY 2009

MATTHEW F. DORAN P.E., P.L.S.
PROFESSIONAL ENGINEER & LAND SURVEYOR
NEW JERSEY LICENSE NO. 28273
840 NORTH MAIN STREET
PLEASANTVILLE, NEW JERSEY 08232
TO SHOW CONDITIONS OF JANUARY 1, 2009

THIS SHEET HAS BEEN DRAWN USING
COMPUTER AIDED DRAFTING/DESIGN (CAD/D)

SHEET 17



SHEET 15