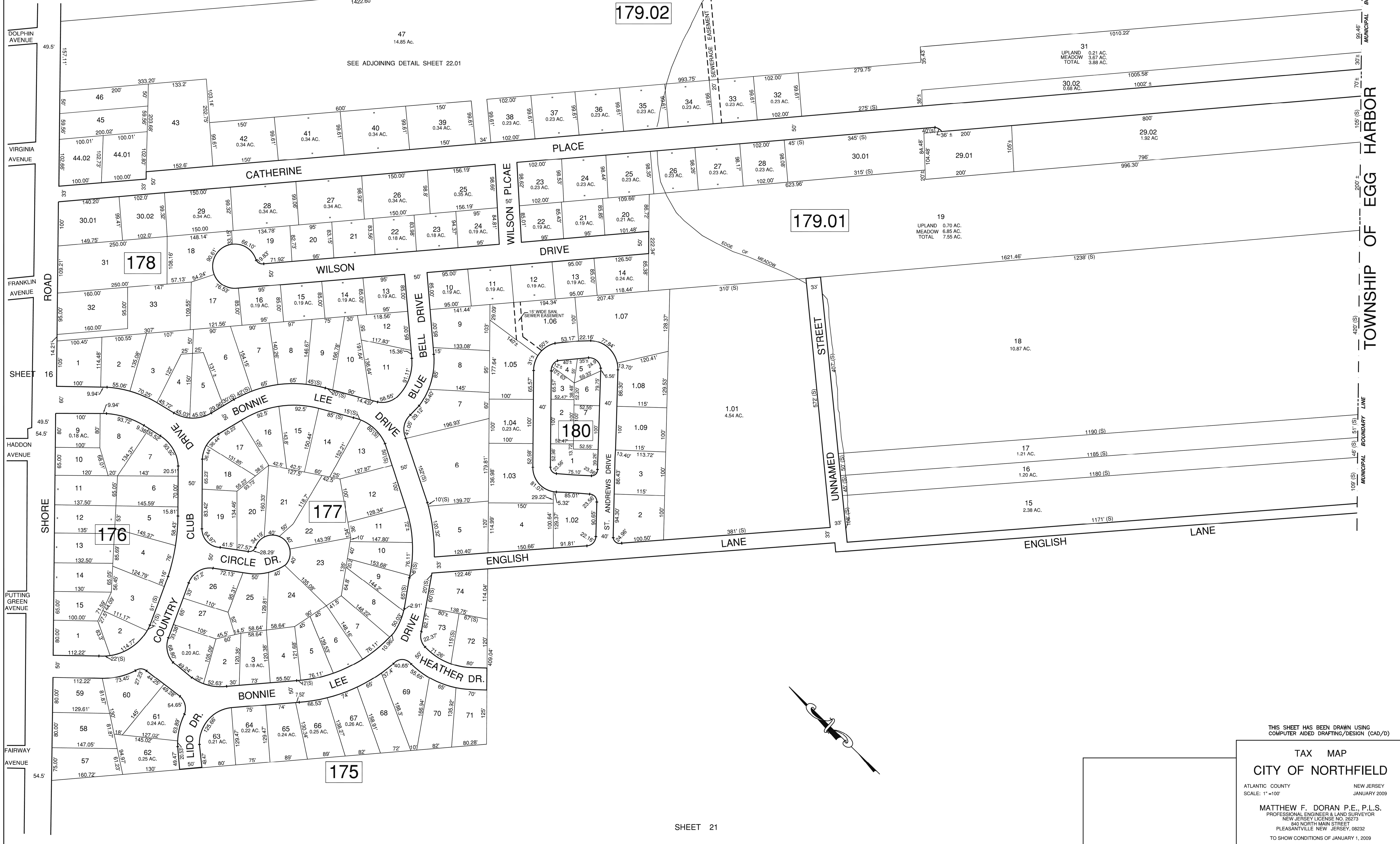


REVISIONS			
DATE	BY	LIC. No.	COMMENTS
07-19-23	HOWARD TRANSUE	33541	GENERAL CHANGES

SHEET 23

SHEET 17



DOLPHIN AVENUE

VIRGINIA AVENUE

FRANKLIN AVENUE

SHEET 16

HADDON AVENUE

SHORE ROAD

PUTTING GREEN AVENUE

FAIRWAY AVENUE

THIS SHEET HAS BEEN DRAWN USING
COMPUTER AIDED DRAFTING/DESIGN (CAD/D)

TAX MAP
CITY OF NORTHFIELD

ATLANTIC COUNTY NEW JERSEY
SCALE: 1" = 100' JANUARY 2009

MATTHEW F. DORAN P.E., P.L.S.
PROFESSIONAL ENGINEER & LAND SURVEYOR
NEW JERSEY LICENSE NO. 26273
840 NORTH MAIN STREET
PLEASANTVILLE, NEW JERSEY, 08232
TO SHOW CONDITIONS OF JANUARY 1, 2009

SHEET 21