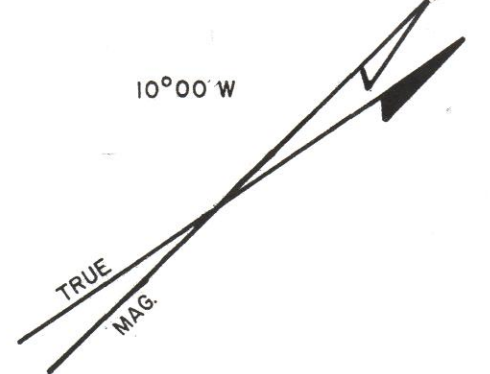
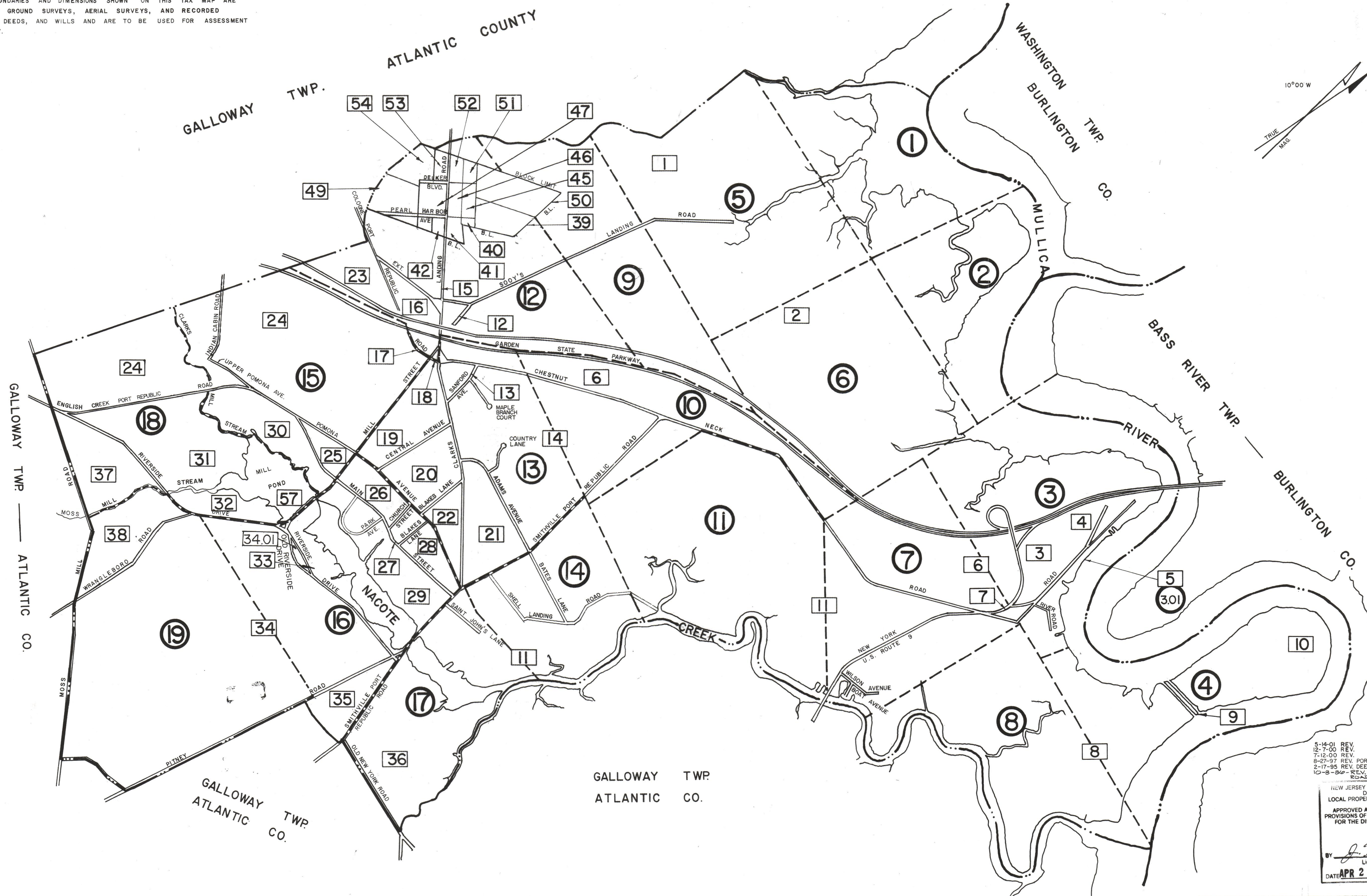


# KEY MAP

THIS TAX MAP SUPERSEDES THE TAX MAP APPROVED OCTOBER 31, 1931

THE AREAS, BOUNDARIES AND DIMENSIONS SHOWN ON THIS TAX MAP ARE DERIVED FROM GROUND SURVEYS, AERIAL SURVEYS, AND RECORDED PLANS, MAPS, DEEDS, AND WILLS AND ARE TO BE USED FOR ASSESSMENT PURPOSES ONLY.



5-14-01 REV.  
12-7-00 REV.  
7-12-00 REV.  
8-27-97 REV. PORTION FOURTH AVE VACATION  
2-17-95 REV. DEER LANE REMOVED  
10-8-89 REV. BLOCK 11 BATES LANE & SHELL LANDING  
ROADS ADDED.

NEW JERSEY DEPARTMENT OF THE TREASURY  
DIVISION OF TAXATION  
LOCAL PROPERTY AND PUBLIC UTILITY BRANCH  
APPROVED AS A TAX MAP PURSUANT TO THE  
PROVISIONS OF CHAPTER 175, LAWS OF 1913, ETC.  
FOR THE DIRECTOR, DIVISION OF TAXATION  
BY *J. H. Thomas* P.E. & L.S.  
LIC. #5009 SUPERINTENDENT  
DATE APR 27 1981 SERIAL NO. 597

- LEGEND**
- DETAIL SHEET NUMBER
  - BLOCK NUMBER
  - SHEET LIMIT
  - FLOOD PLAIN AREA
  - MEADOW LINE
  - NON - DEDICATED ROADWAYS
  - MUNICIPAL BOUNDARY
  - COUNTY BOUNDARY

I HEREBY CERTIFY THAT THIS MAP AND SURVEY HAS BEEN MADE UNDER MY IMMEDIATE SUPERVISION, AND COMPLIES WITH THE LAWS OF THE STATE OF NEW JERSEY.

*Benjamin F. Richards, Jr.*  
BENJAMIN F. RICHARDS, JR.  
PROFESSIONAL ENGINEER & LAND SURVEYOR  
NUMBER 16314

**TAX MAP**  
CITY OF PORT REPUBLIC  
ATLANTIC COUNTY NEW JERSEY  
SCALE 1"= 1000'  
NOVEMBER 15, 1978  
BENJAMIN F. RICHARDS, JR. PE & LS  
217 WEST MAIN STREET  
MAYS LANDING, NEW JERSEY 08330  
TO SHOW CONDITIONS AS OF NOVEMBER 15, 1978

# KEY MAP