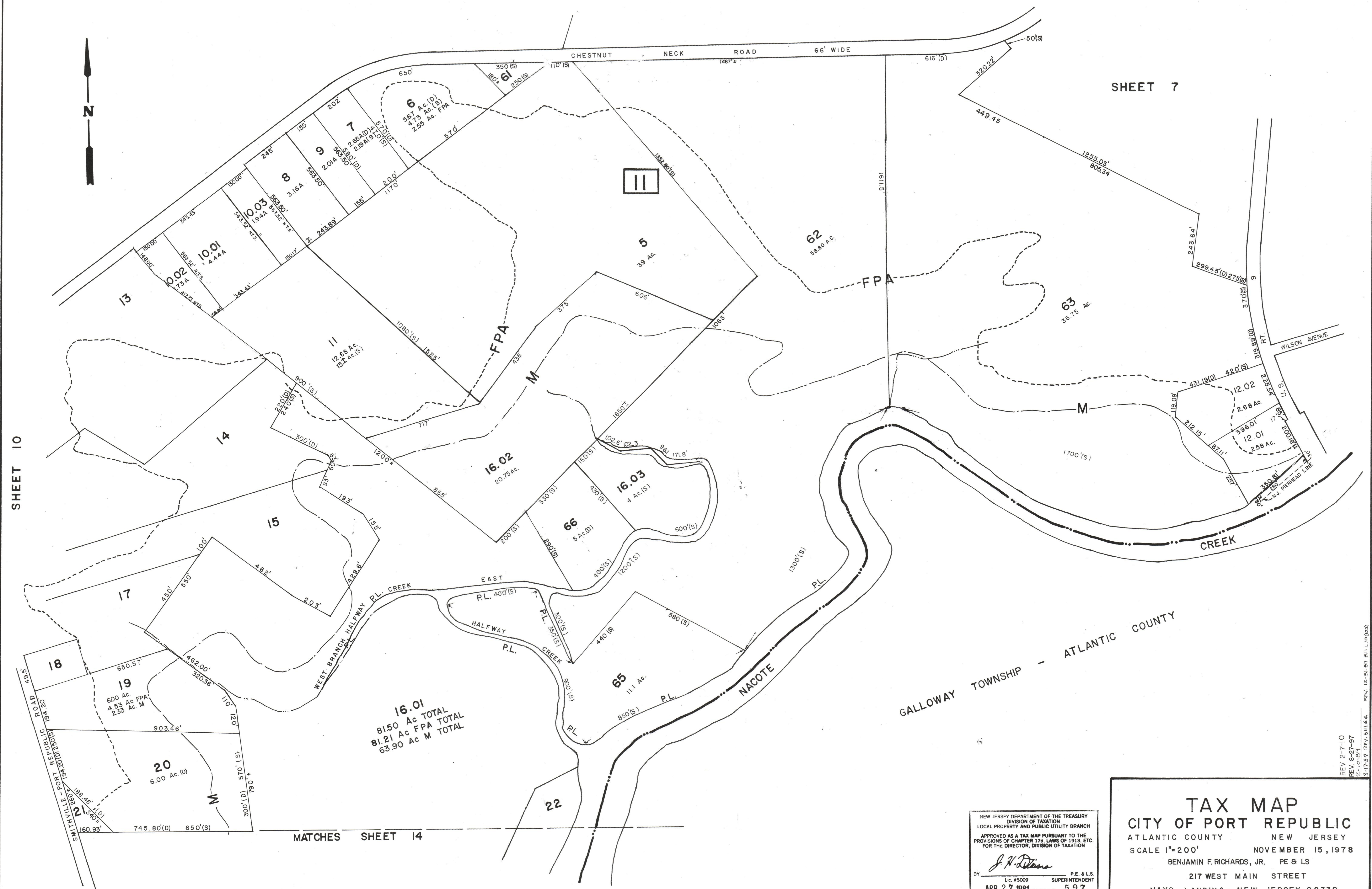




SHEET 7

SHEET 10



MATCHES SHEET 14

NEW JERSEY DEPARTMENT OF THE TREASURY
 DIVISION OF TAXATION
 LOCAL PROPERTY AND PUBLIC UTILITY BRANCH
 APPROVED AS A TAX MAP PURSUANT TO THE
 PROVISIONS OF CHAPTER 179, LAWS OF 1913, ETC.
 FOR THE DIRECTOR, DIVISION OF TAXATION

J. H. DeVore
 BY SUPERINTENDENT
 Lic. #5009
 DATE: APR 27 1981 SERIAL NO. 597

TAX MAP
CITY OF PORT REPUBLIC
 ATLANTIC COUNTY NEW JERSEY
 SCALE 1"=200' NOVEMBER 15, 1978
 BENJAMIN F. RICHARDS, JR. PE & LS
 217 WEST MAIN STREET
 MAYS LANDING, NEW JERSEY 08330

REV. 2-7-10
 REV. 8-27-97
 2-15-93
 3-17-97 REV. B.11 L.6
 REV. 12-24-87 B.11 L.10 (REV.)