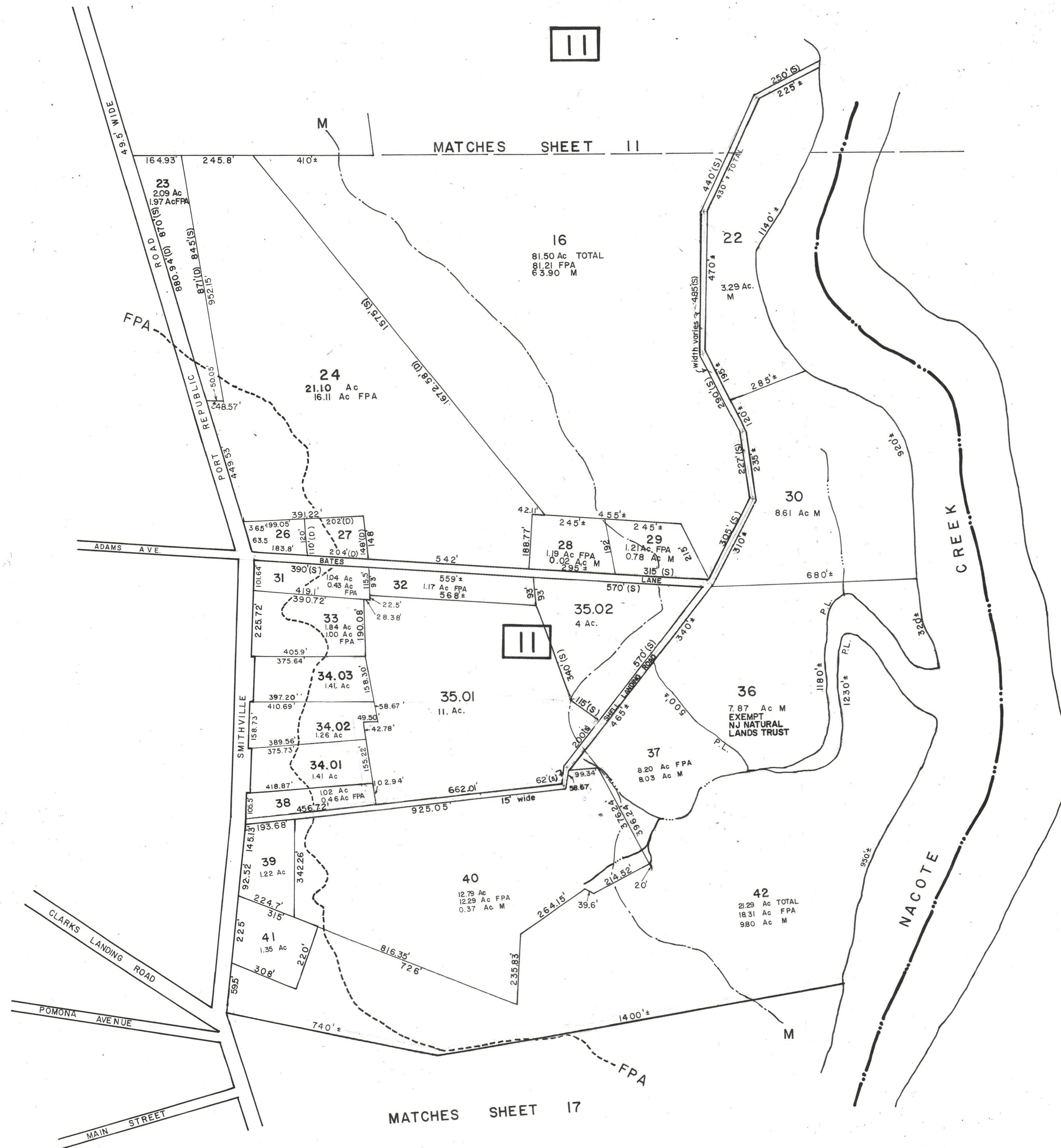




MATCHES SHEET 13



MATCHES SHEET 17

GALLOWAY TOWNSHIP—ATLANTIC COUNTY

2-16-95 REV Block 11, Lot 34.01, 34.02, 34.03
 7-2-92 REV Lot 42
 2-10-89 REV Lot 42
 0-9-88 REV Block 11, BATES, NAME AMENDED
 10-2-82 REV Block 11, Lot 34.01 & 34.02

NEW JERSEY DEPARTMENT OF THE TREASURY
 DIVISION OF TAXATION
 LOCAL PROPERTY AND PUBLIC UTILITY BRANCH
 APPROVED AS A TAX MAP PURSUANT TO THE
 PROVISIONS OF CHAPTER 175, LAWS OF 1913, ETC.
 FOR THE DIRECTOR, DIVISION OF TAXATION
J. H. DiStasio
 BY: SUPERINTENDENT
 Lic. #5009
 DATE: APR 27 1981 SERIAL NO. 597

TAX MAP
CITY OF PORT REPUBLIC
 ATLANTIC COUNTY NEW JERSEY
 SCALE 1"=200' NOVEMBER 15, 1978
 BENJAMIN F. RICHARDS, JR. PE & LS
 217 WEST MAIN STREET
 MAYS LANDING, NEW JERSEY 08330