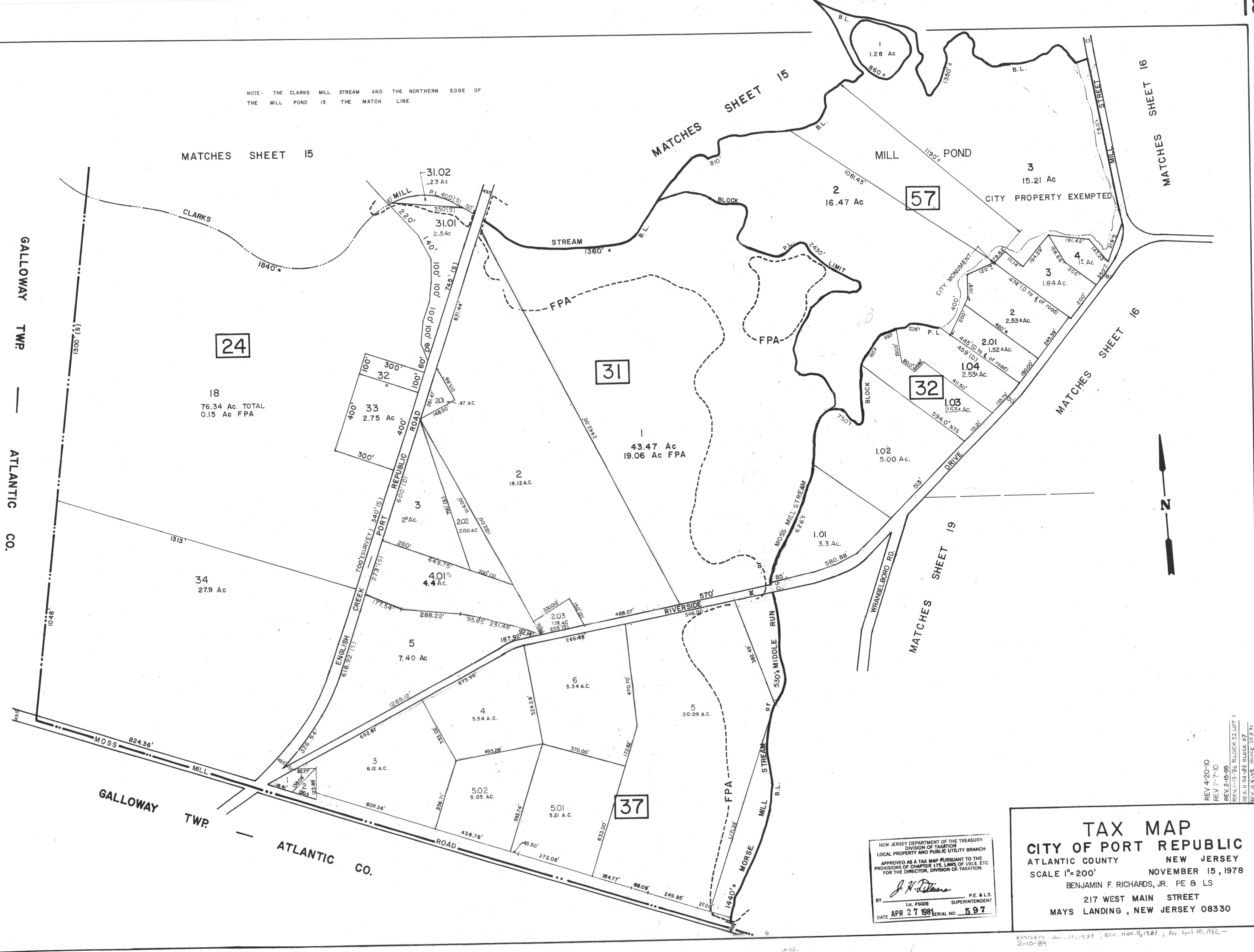


NOTE: THE CLARKS MILL STREAM AND THE NORTHERN EDGE OF THE MILL POND IS THE MATCH LINE.



24

31

32

37

57

NEW JERSEY DEPARTMENT OF THE TREASURY
 DIVISION OF TAXATION
 LOCAL PROPERTY AND PUBLIC UTILITY BRANCH
 APPROVED AS A TAX MAP PURSUANT TO THE
 PROVISIONS OF CHAPTER 175, LAWS OF 1913, ETC.
 FOR THE DIRECTOR, DIVISION OF TAXATION

J. A. Deane
 P.E. & L.S.
 LIC. #5009 SUPERINTENDENT
 DATE APR 27 1981 SERIAL NO. 597

TAX MAP
CITY OF PORT REPUBLIC
 ATLANTIC COUNTY NEW JERSEY
 SCALE 1"=200' NOVEMBER 15, 1978
 BENJAMIN F. RICHARDS, JR. PE & LS
 217 WEST MAIN STREET
 MAYS LANDING, NEW JERSEY 08330

REV 4-20-10
 REV 2-7-10
 REV 2-15-95
 REV 1-13-86 BLOCK 33 LOT 1
 REV 11-24-82 BLOCK 37
 REV 10-14-73E BRIDGE 24-241

REVISED Oct. 21, 1981; REV. Nov. 11, 1981; Rev. April 20, 1982 - 2-10-89