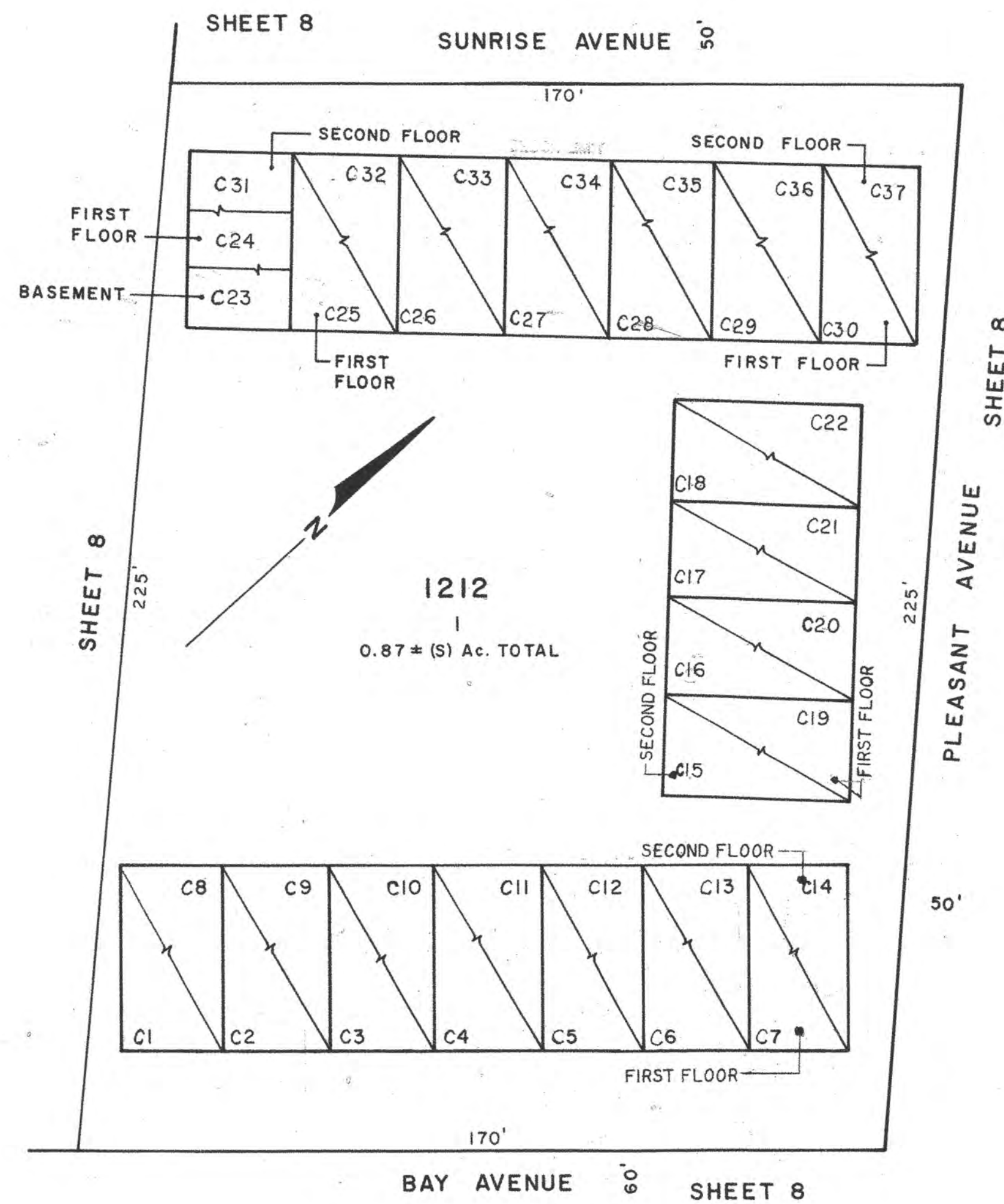
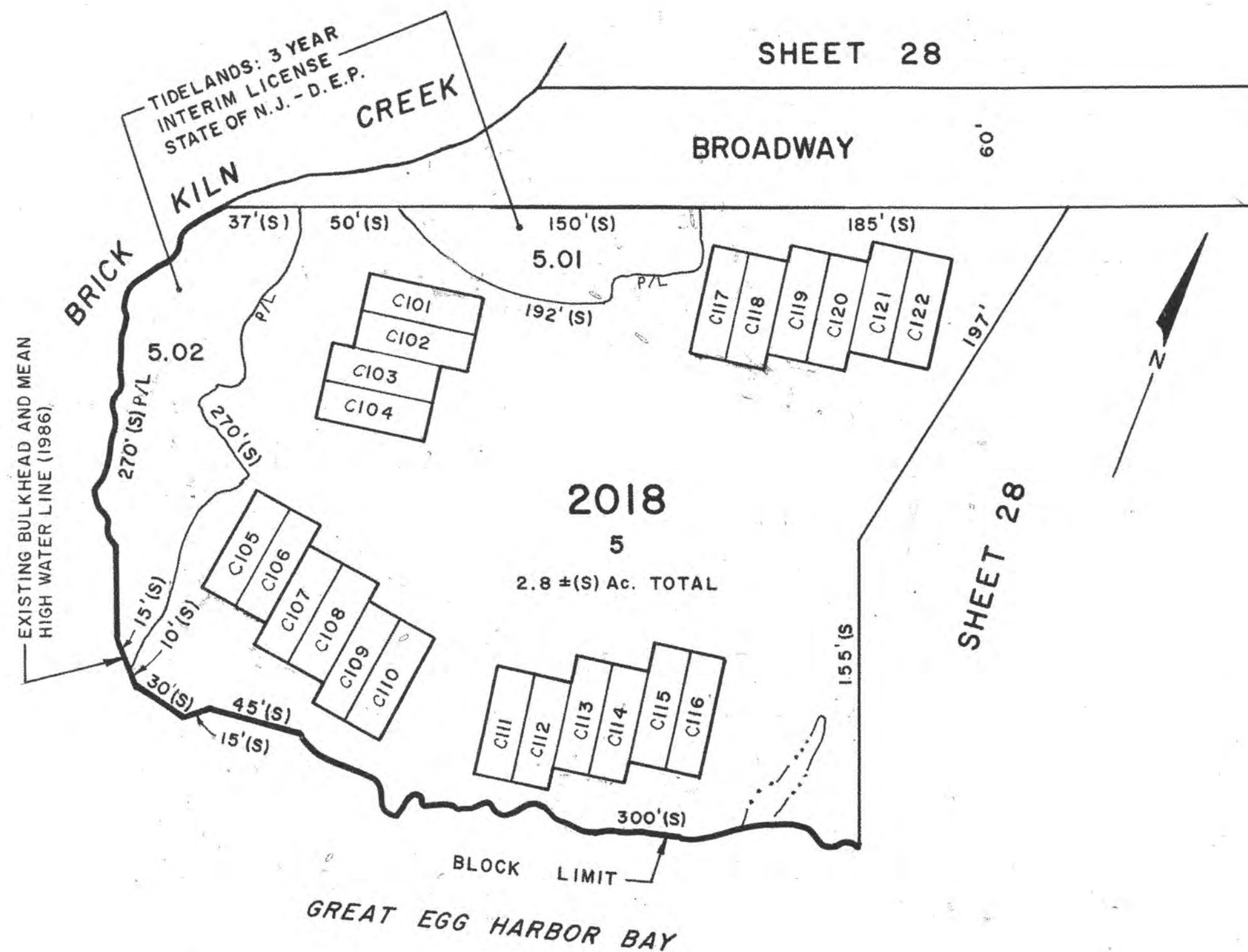


REVISIONS

WPHA 2-15-89
WPHA 1-18-07
JAM 1-18-10
JAM 10-23-12



"HARBOR VIEW"
- CONDOMINIUMS -
NOT TO SCALE



"SOUTH POINTE"
- CONDOMINIUMS -
SCALE: 1" = 60'

Note: All qualifiers shown are listed as C000X.
Where XXX equals the qualifier shown on the map.
Example:
One digit qualifiers - C0001
Two digit qualifiers - C0011
Three digit qualifiers - C0111

NEW JERSEY DEPARTMENT OF THE TREASURY
DIVISION OF TAXATION
PROPERTY ADMINISTRATION
APPROVED AS A TAX MAP PURSUANT TO THE AUTHORITY OF
N.J.S.A. 84:1-16 AND N.J.S.A. 84:2D-1
FOR THE DIRECTOR, DIVISION OF TAXATION

THOMAS, FELL, CHAP, LOON, PROPERTY, FIELD ASSISTANCE

DATE: SEP 17 2015 SERIAL NO. 361

NEW JERSEY DEPARTMENT OF THE TREASURY
DIVISION OF TAXATION
APPROVED AS A TAX MAP PURSUANT TO THE AUTHORITY OF
N.J.S.A. 84:1-16 AND N.J.S.A. 84:2D-1
FOR THE DIRECTOR, DIVISION OF TAXATION

THOMAS, FELL, CHAP, LOON, PROPERTY, FIELD ASSISTANCE

DATE: JAN 1 2015 SERIAL NO. 1052

TAX MAP
CITY OF SOMERS POINT
ATLANTIC COUNTY, NEW JERSEY

SCALE: AS NOTED JUNE, 1987

TO SHOW CONDITIONS AS OF: 11-17-14
JOHN R. WALKER
OCEAN CITY, N.J.
N.J. LICENSE NO. 10294