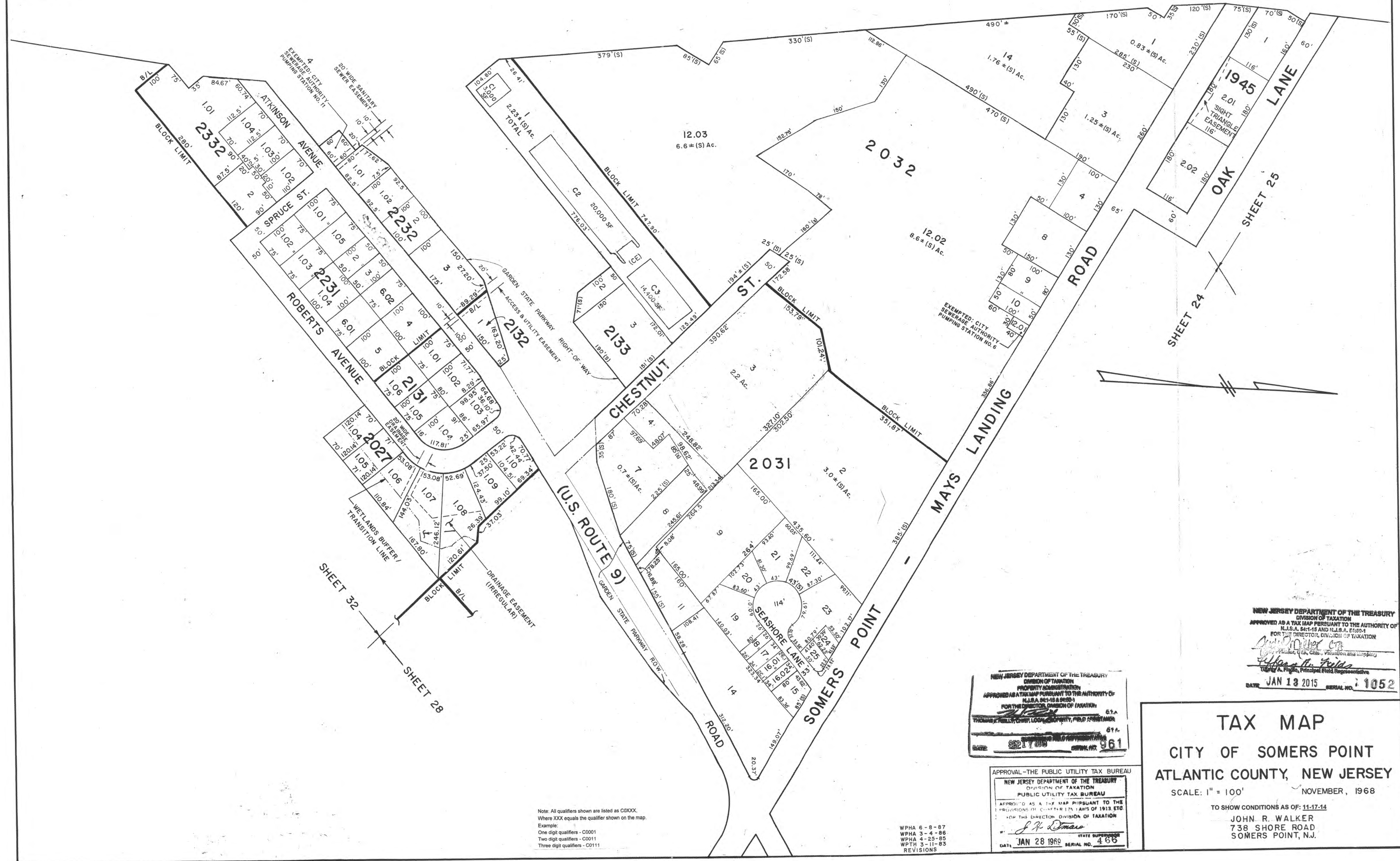


REVISIONS

WPHA	2-4-88
WPHA	3-15-89
WPHA	3-4-93
WPHA	11-21-94
WPHA	3-7-95
WPHA	4-4-97
WPHA	3-14-05
WPHA	1-18-07
JAM	8-30-12
JAM	10-24-12

GARDEN STATE PARKWAY RIGHT-OF-WAY



SHEET 32

SHEET 28

SHEET 24

SHEET 25

Note: All qualifiers shown are listed as C0000.
Where XXX equals the qualifier shown on the map.
Example:
One digit qualifiers - C0001
Two digit qualifiers - C0011
Three digit qualifiers - C0111

WPHA 6-9-97
WPHA 3-4-86
WPHA 4-25-85
WPTH 3-11-83
REVISIONS

NEW JERSEY DEPARTMENT OF THE TREASURY
DIVISION OF TAXATION
PROPERTY CONSERVATION
APPROVED AS A TAX MAP PURSUANT TO THE AUTHORITY OF
N.J.S.A. 54:15 & 54:16
FOR THE DIRECTOR, DIVISION OF TAXATION
DATE: 8/21/2008 SERIAL NO. 361

APPROVAL - THE PUBLIC UTILITY TAX BUREAU
NEW JERSEY DEPARTMENT OF THE TREASURY
DIVISION OF TAXATION
PUBLIC UTILITY TAX BUREAU
APPROVED AS A TAX MAP PURSUANT TO THE
PROVISIONS OF CHAPTER 175 LAWS OF 1913, ETC.
FOR THE DIRECTOR, DIVISION OF TAXATION
DATE: JAN 28 1968 SERIAL NO. 468

NEW JERSEY DEPARTMENT OF THE TREASURY
DIVISION OF TAXATION
APPROVED AS A TAX MAP PURSUANT TO THE AUTHORITY OF
N.J.S.A. 54:15 AND N.J.S.A. 54:16
FOR THE DIRECTOR, DIVISION OF TAXATION
DATE: JAN 13 2015 SERIAL NO. 1052

TAX MAP
CITY OF SOMERS POINT
ATLANTIC COUNTY, NEW JERSEY
SCALE: 1" = 100'
NOVEMBER, 1968
TO SHOW CONDITIONS AS OF: 11-17-14
JOHN R. WALKER
738 SHORE ROAD
SOMERS POINT, N.J.