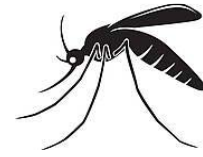




**ATLANTIC COUNTY DIVISION
OF PUBLIC HEALTH**



MOSQUITO-PROOF YOUR YARD
Water + 7 Days = Mosquitoes!

This checklist will help you find and eliminate places where mosquitoes may breed around your home. Anything that holds water can be a home for mosquito larvae. It only takes 7 days for larvae to become an adult mosquito. Stay aware and keep your property free of mosquito breeding habitats.

COMMON HOUSEHOLD ITEMS	ACTIONS
<input type="checkbox"/> Buckets	Empty buckets and turn them over
<input type="checkbox"/> Garbage cans and recycling bins	Use tight fitting lids on garbage cans / drill holes in bottom of recycling bins
<input type="checkbox"/> Tires	Discard properly or store undercover
BUILDING STRUCTURES	ACTIONS
<input type="checkbox"/> Gutters and flexible downspout extensions	Keep gutters clean and free of debris. Pitch extensions so water drains completely
<input type="checkbox"/> Leaky hose spigots/outdoor faucets	Fix leak or call a professional plumber
CHILDREN'S TOYS	ACTIONS
<input type="checkbox"/> Kiddie pools	Empty after each use if possible. Be sure to store indoors or turn upside down when not in use
<input type="checkbox"/> Big plastic toys, wagons	Keep toys turned over or inside when not in use
<input type="checkbox"/> Portable basketball hoops	Make sure caps for fill holes are in place
AROUND THE GARDEN	ACTIONS
<input type="checkbox"/> Planters and planter saucers	Dump the water out every 3-5 days or don't use saucers. Drill holes in bottom of planter
<input type="checkbox"/> Wheelbarrows	Turn upside down or on end.
<input type="checkbox"/> Watering cans	Empty and store upside down or inside
<input type="checkbox"/> Rain barrels	Cover tops with tightly fitted screen.
<input type="checkbox"/> Bird baths	Change water at least every 3-5 days
<input type="checkbox"/> Decorative ponds	Stock with fish, aerate or use Bti* to treat for mosquito larvae
<input type="checkbox"/> Tree holes	Fill holes with sand/mortar
RECREATION	ACTIONS
<input type="checkbox"/> Pools (unused) /pool covers	Empty all the water if possible. If water can't be emptied, treat with Bti* (there is no breeding in maintained pools)
<input type="checkbox"/> Boats, canoes, etc	Empty all water if possible or if not possible treat water with Bti*. Cover boats with taut tarps, boat shrink wrap

*Bti (Bacillus thuringiensis israelensis) is a low impact pesticide. It is available at many hardware stores, pond supply stores and online. Bti targets mosquito larvae. Be sure to choose a product that is registered with the US EPA, labeled for mosquito larva. Closely follow directions on the label. You may only use these products on your property.

PERSONAL PROTECTION
<ul style="list-style-type: none"> • Limit outdoor activity during dusk, dawn and early evening hours • Wear long sleeved shirts, pants, and socks when outdoors • Avoid areas with heavy underbrush and trees • Use insect repellent containing DEET, Picaridin or lemon eucalyptus and carefully follow directions. If using sunscreen, apply first then apply insect repellent • Ensure that screens are free of holes and in good condition

For additional information: www.atlanticcountynj.gov/public-health/ or call 609-645-5971
www.nj.gov/health/cd
www.cdc.gov