

LEGEND

MUNICIPAL BOUNDARY LINE	---
ARTIFICIAL BLOCK LIMIT	---
FORMER PROPERTY LINE	---
STREAM & WATER LINES	---
STREAM & WATER LINES (IF PROPERTY LINE)	---
SHEET LIMIT LINE (ON KEY MAP)	---
PIERHEAD LINE	---
BULKHEAD LINE	---
FLOOD HAZARD LINE	---
EASEMENT LINE	---
ASSESSMENT LINE	---
MEADOW LINE	---
BLOCK NUMBER (ON KEY MAP)	17
BLOCK NUMBER	111
TAX MAP SHEET NUMBER	5
LOT NUMBER	16
SCALED DISTANCE/ACREAGE	200(S)
DEED DISTANCE/ACREAGE	200(D)
CALCULATED DISTANCE	200

I HEREBY CERTIFY THAT THIS MAP AND THE SURVEY HAS BEEN MADE UNDER MY IMMEDIATE SUPERVISION AND COMPLIES WITH THE LAWS OF THE STATE OF NEW JERSEY.

MATTHEW F. DORAN, P.E. & L.S. No. 26273

TAX MAP
CITY OF NORTHFIELD
 ATLANTIC COUNTY NEW JERSEY
 SCALE: 1" = 500'
 JANUARY 2008
MATTHEW F. DORAN P.E., P.L.S., P.P.
 N.J. P.E. & P.L.S. LIC. NO. 26273
 840 NORTH MAIN STREET
 PLEASANTVILLE, NEW JERSEY, 08232
 TO SHOW CONDITIONS OF JANUARY 1, 2009

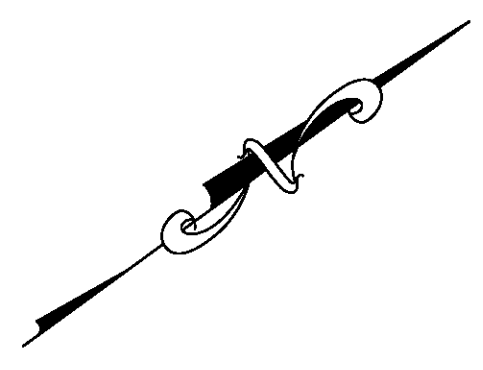
REVISIONS

DATE	BY	LIC No.	COMMENTS

NOTES:
 1. THE AREA, BOUNDARIES AND DIMENSIONS SHOWN ON THIS TAX MAP ARE DERIVED FROM GROUND SURVEYS, AERIAL SURVEYS, AND RECORDED PLANS, MAPS, DEEDS, AND WILLS AND ARE TO BE USED FOR ASSESSMENT PURPOSES ONLY.
 2. THIS TAX MAP SUPERCEDES THE TAX MAP APPROVED DATE: JANUARY 1, 1969.
 3. THIS SHEET HAS BEEN DRAWN USING COMPUTER AIDED DRAFTING/DESIGN (CAD/D).

TAX MAP
CITY OF NORTHFIELD
 ATLANTIC COUNTY NEW JERSEY
 SCALE: 1"=100' JANUARY 2009
MATTHEW F. DORAN P.E., P.L.S.
 PROFESSIONAL ENGINEER & LAND SURVEYOR
 NEW JERSEY LICENSE NO. 26573
 440 NORTH MAIN STREET
 PLEASANTVILLE, NEW JERSEY, 08232
 TO SHOW CONDITIONS OF JANUARY 1, 2009

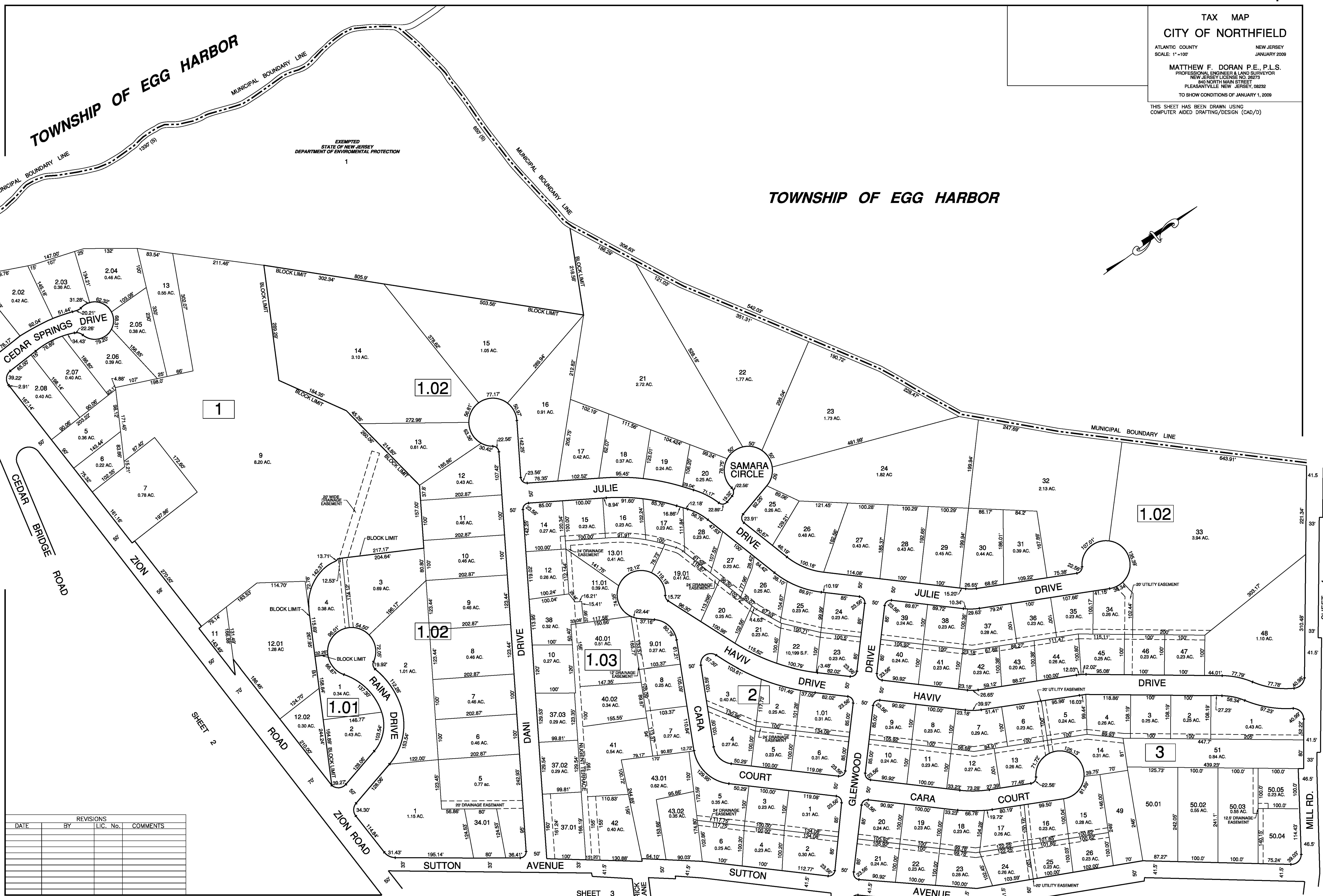
THIS SHEET HAS BEEN DRAWN USING
 COMPUTER AIDED DRAFTING/DESIGN (CAD/D)



TOWNSHIP OF EGG HARBOR

TOWNSHIP OF EGG HARBOR

CITY OF LINWOOD

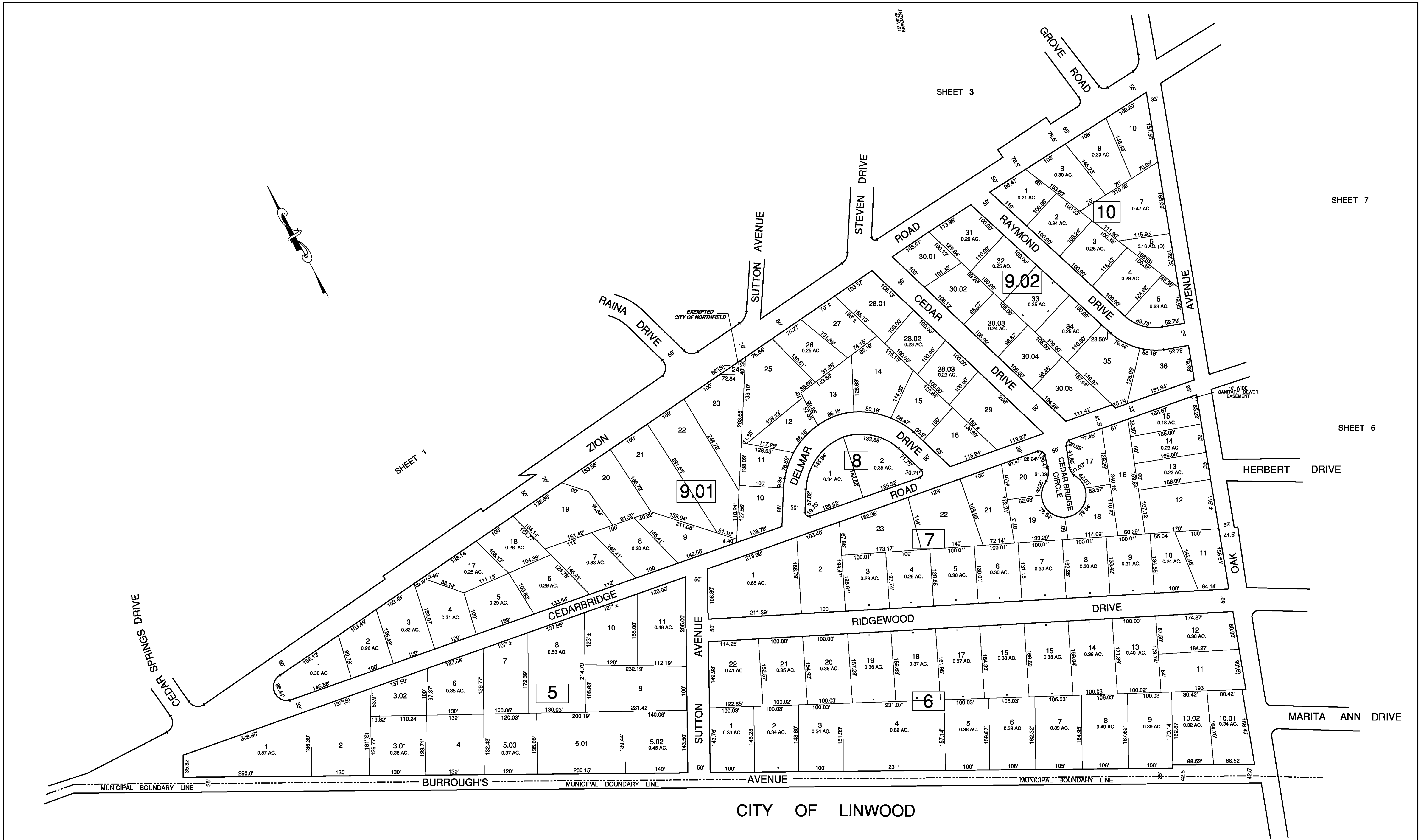


REVISIONS			
DATE	BY	LIC. No.	COMMENTS

SHEET 2

SHEET 3

SHEET 4



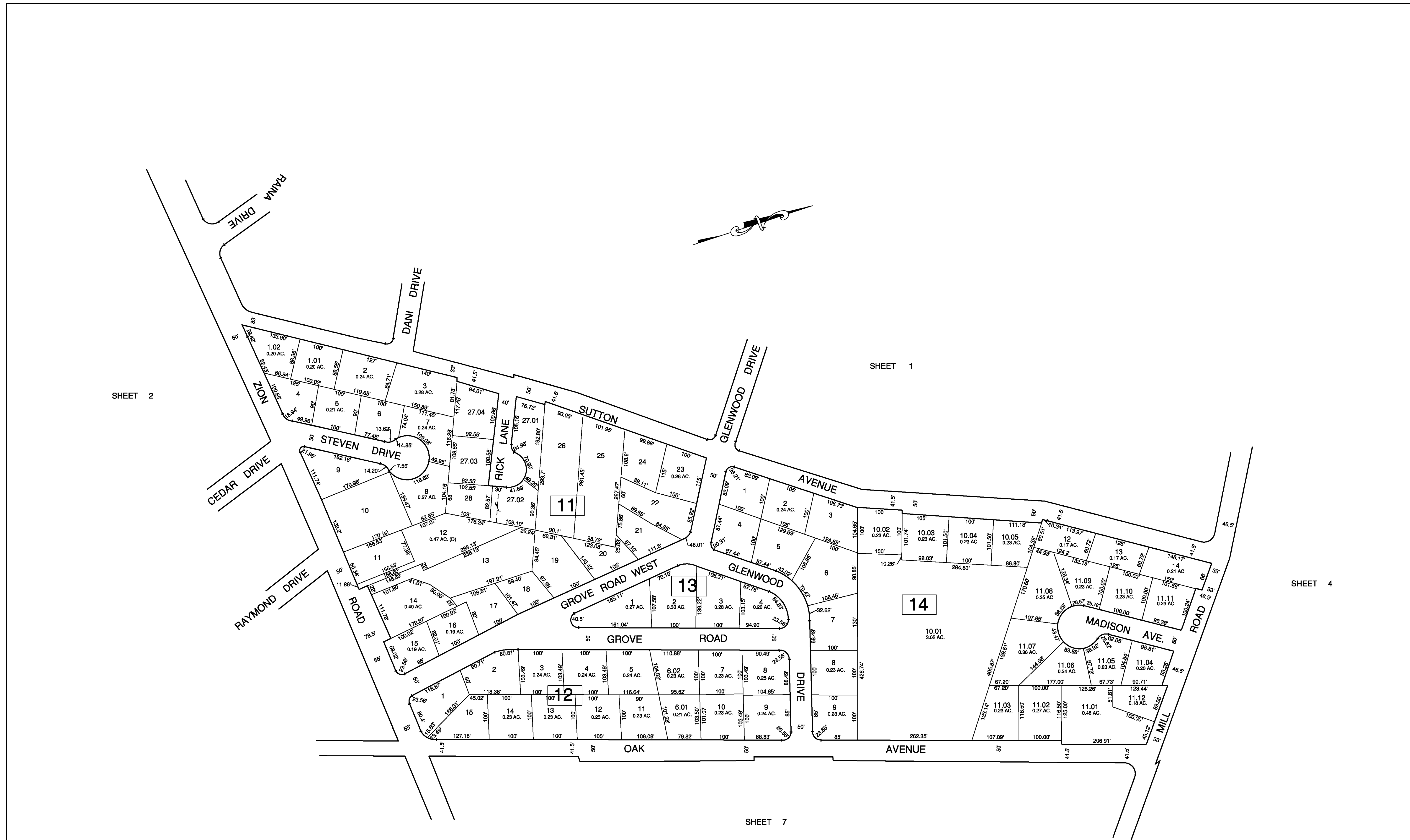
REVISIONS			
DATE	BY	LIC. No.	COMMENTS

THIS SHEET HAS BEEN DRAWN USING
COMPUTER AIDED DRAFTING/DESIGN (CAD/D)

TAX MAP
CITY OF NORTHFIELD

ATLANTIC COUNTY NEW JERSEY
SCALE: 1" = 100' JANUARY 2009

MATTHEW F. DORAN P.E., P.L.S.
PROFESSIONAL ENGINEER & LAND SURVEYOR
NEW JERSEY LICENSE NO. 28273
840 NORTH MAIN STREET
PLEASANTVILLE NEW JERSEY, 08232
TO SHOW CONDITIONS OF JANUARY 1, 2009



SHEET 2

SHEET 1

SHEET 4

SHEET 7

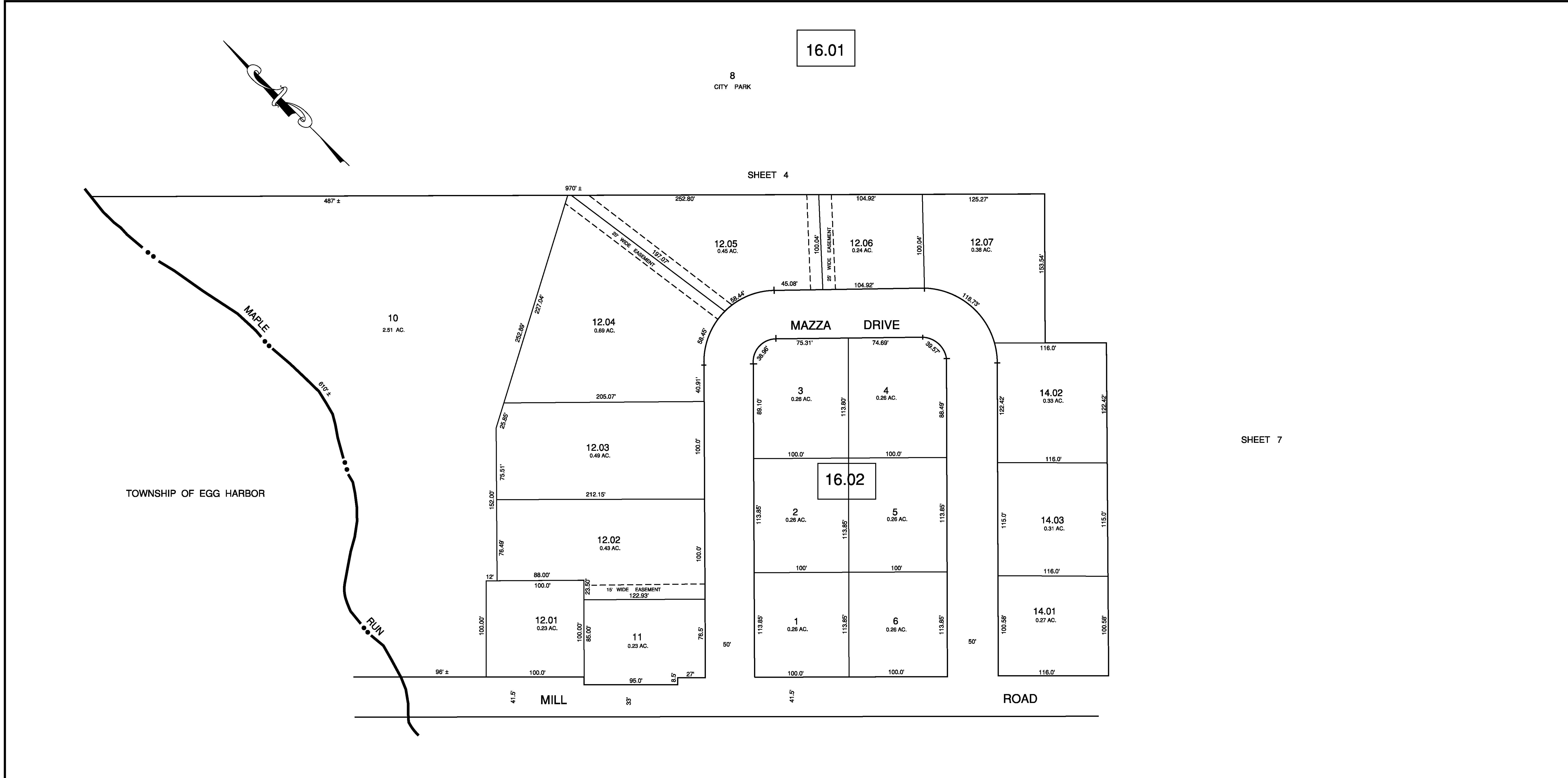
REVISIONS			
DATE	BY	LIC. No.	COMMENTS

THIS SHEET HAS BEEN DRAWN USING
COMPUTER AIDED DRAFTING/DESIGN (CAD/D)

TAX MAP
CITY OF NORTHFIELD

ATLANTIC COUNTY NEW JERSEY
SCALE: 1"=100' JANUARY 2009

MATTHEW F. DORAN P.E., P.L.S.
PROFESSIONAL ENGINEER & LAND SURVEYOR
NEW JERSEY LICENSE NO. 26273
840 NORTH MAIN STREET
PLEASANTVILLE, NEW JERSEY, 08232
TO SHOW CONDITIONS OF JANUARY 1, 2009



REVISIONS			
DATE	BY	LIC. No.	COMMENTS

THIS SHEET HAS BEEN DRAWN USING
COMPUTER AIDED DRAFTING/DESIGN (CAD/D)

TAX MAP
CITY OF NORTHFIELD

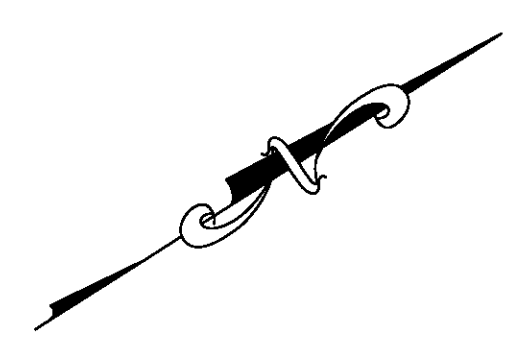
ATLANTIC COUNTY NEW JERSEY
SCALE: 1"=50' JANUARY 2009

MATTHEW F. DORAN P.E., P.L.S.
PROFESSIONAL ENGINEER & LAND SURVEYOR
NEW JERSEY LICENSE NO. 28273
840 NORTH MAIN STREET
PLEASANTVILLE NEW JERSEY, 08232
TO SHOW CONDITIONS OF JANUARY 1, 2009

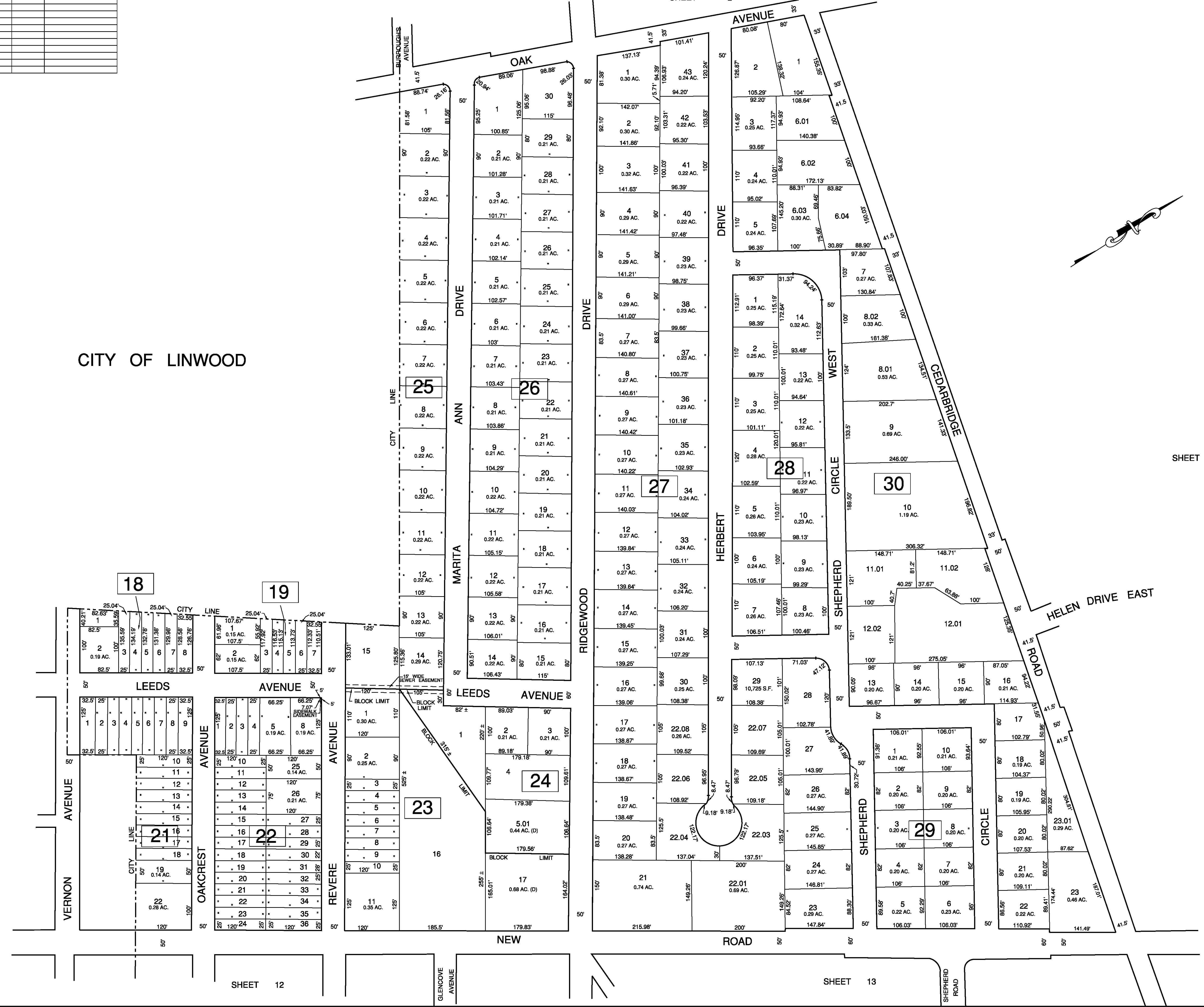
REVISIONS			
DATE	BY	LIC. No.	COMMENTS

SHEET 2

CITY OF LINWOOD



SHEET 7

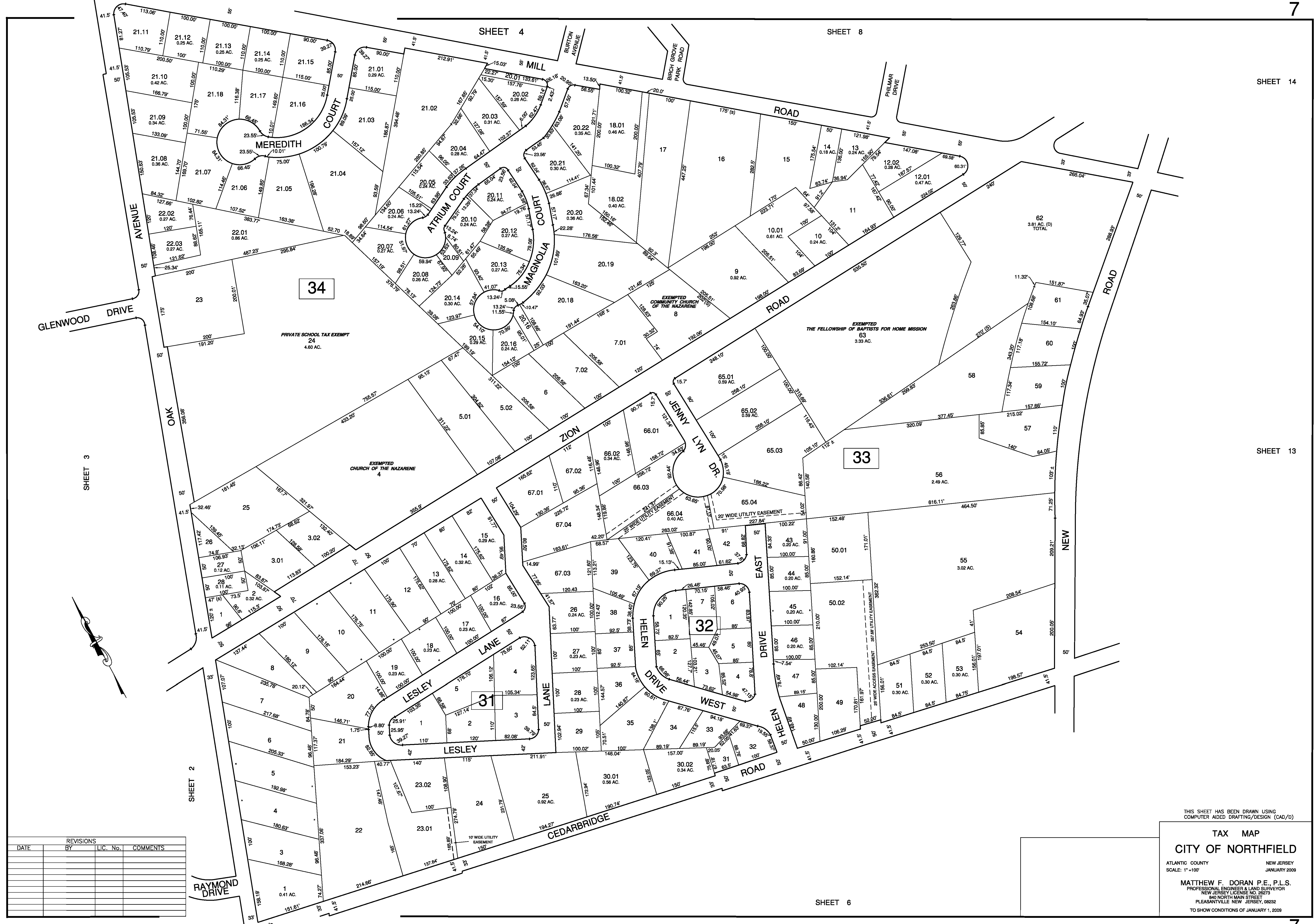


THIS SHEET HAS BEEN DRAWN USING
COMPUTER AIDED DRAFTING/DESIGN (CAD/D)

TAX MAP
CITY OF NORTHFIELD

ATLANTIC COUNTY NEW JERSEY
SCALE: 1"=100' JANUARY 2009

MATTHEW F. DORAN P.E., P.L.S.
PROFESSIONAL ENGINEER & LAND SURVEYOR
NEW JERSEY LICENSE NO. 26273
840 NORTH MAIN STREET
PLEASANTVILLE NEW JERSEY 08232
TO SHOW CONDITIONS OF JANUARY 1, 2009



REVISIONS			
DATE	BY	LIC. No.	COMMENTS

THIS SHEET HAS BEEN DRAWN USING
COMPUTER AIDED DRAFTING/DESIGN (CAD/D)

TAX MAP
CITY OF NORTHFIELD

ATLANTIC COUNTY NEW JERSEY
SCALE: 1" = 100' JANUARY 2009

MATTHEW F. DORAN P.E., P.L.S.
PROFESSIONAL ENGINEER & LAND SURVEYOR
NEW JERSEY LICENSE NO. 28273
840 NORTH MAIN STREET
PLEASANTVILLE NEW JERSEY, 08232
TO SHOW CONDITIONS OF JANUARY 1, 2009

REVISIONS			
DATE	BY	LIC. No.	COMMENTS

TAX MAP
CITY OF NORTHFIELD
 ATLANTIC COUNTY NEW JERSEY
 SCALE: 1" = 100' JANUARY 2009
MATTHEW F. DORAN P.E., P.L.S.
 PROFESSIONAL ENGINEER & LAND SURVEYOR
 NEW JERSEY LICENSE NO. 28273
 840 NORTH MAIN STREET
 PLEASANTVILLE NEW JERSEY, 08232
 TO SHOW CONDITIONS OF JANUARY 1, 2009

THIS SHEET HAS BEEN DRAWN USING
 COMPUTER AIDED DRAFTING/DESIGN (CAD/D)

SHEET 4

SHEET 8

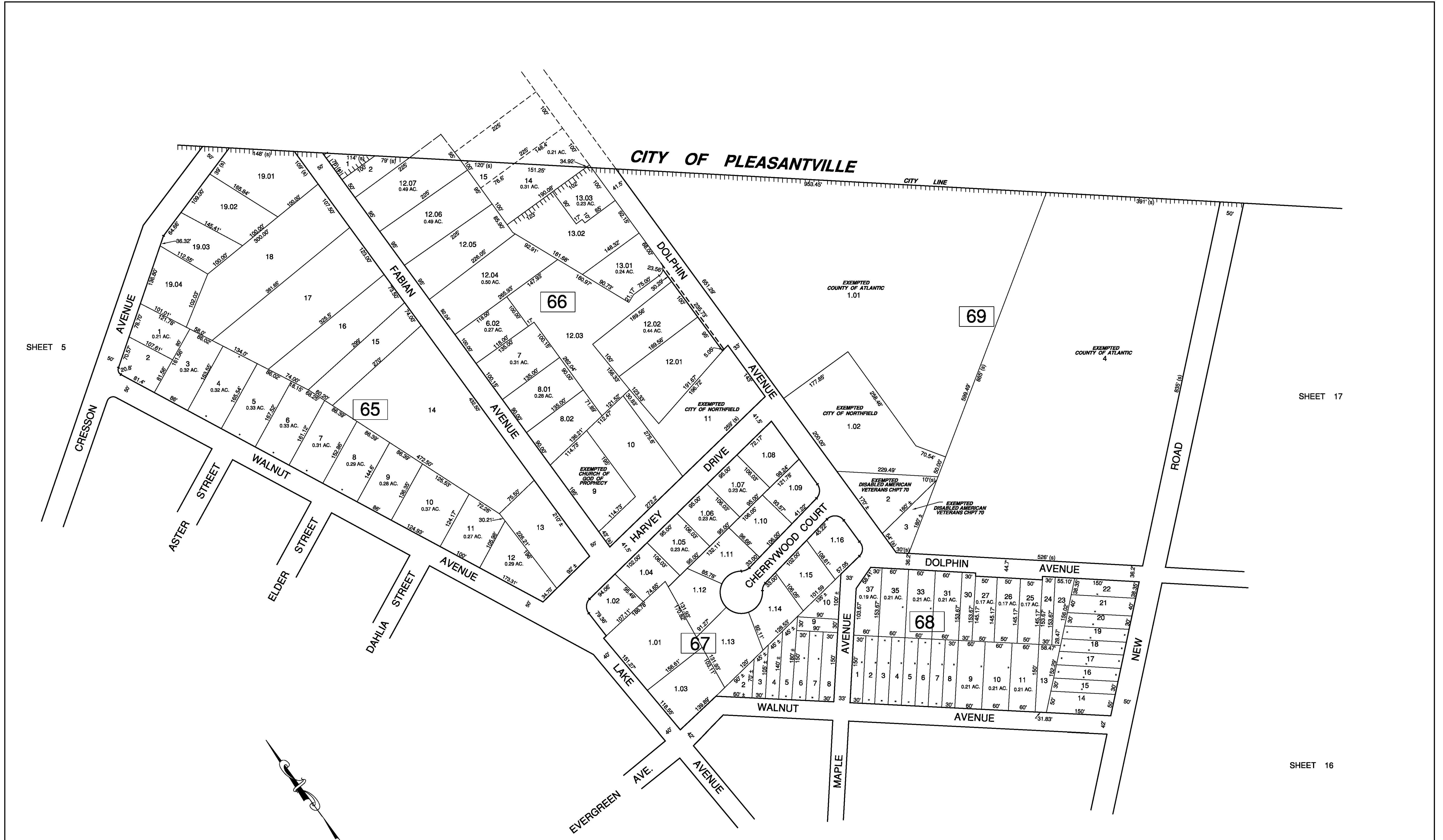
SHEET 14

SHEET 10

SHEET 15

SHEET 16





SHEET 5

SHEET 17

SHEET 16

SHEET 10

REVISIONS			
DATE	BY	LIC. No.	COMMENTS

THIS SHEET HAS BEEN DRAWN USING
COMPUTER AIDED DRAFTING/DESIGN (CAD/D)

TAX MAP
CITY OF NORTHFIELD

ATLANTIC COUNTY NEW JERSEY
SCALE: 1" = 100' JANUARY 2009

MATTHEW F. DORAN P.E., P.L.S.
PROFESSIONAL ENGINEER & LAND SURVEYOR
NEW JERSEY LICENSE NO. 26273
840 NORTH MAIN STREET
PLEASANTVILLE NEW JERSEY, 08232
TO SHOW CONDITIONS OF JANUARY 1, 2009

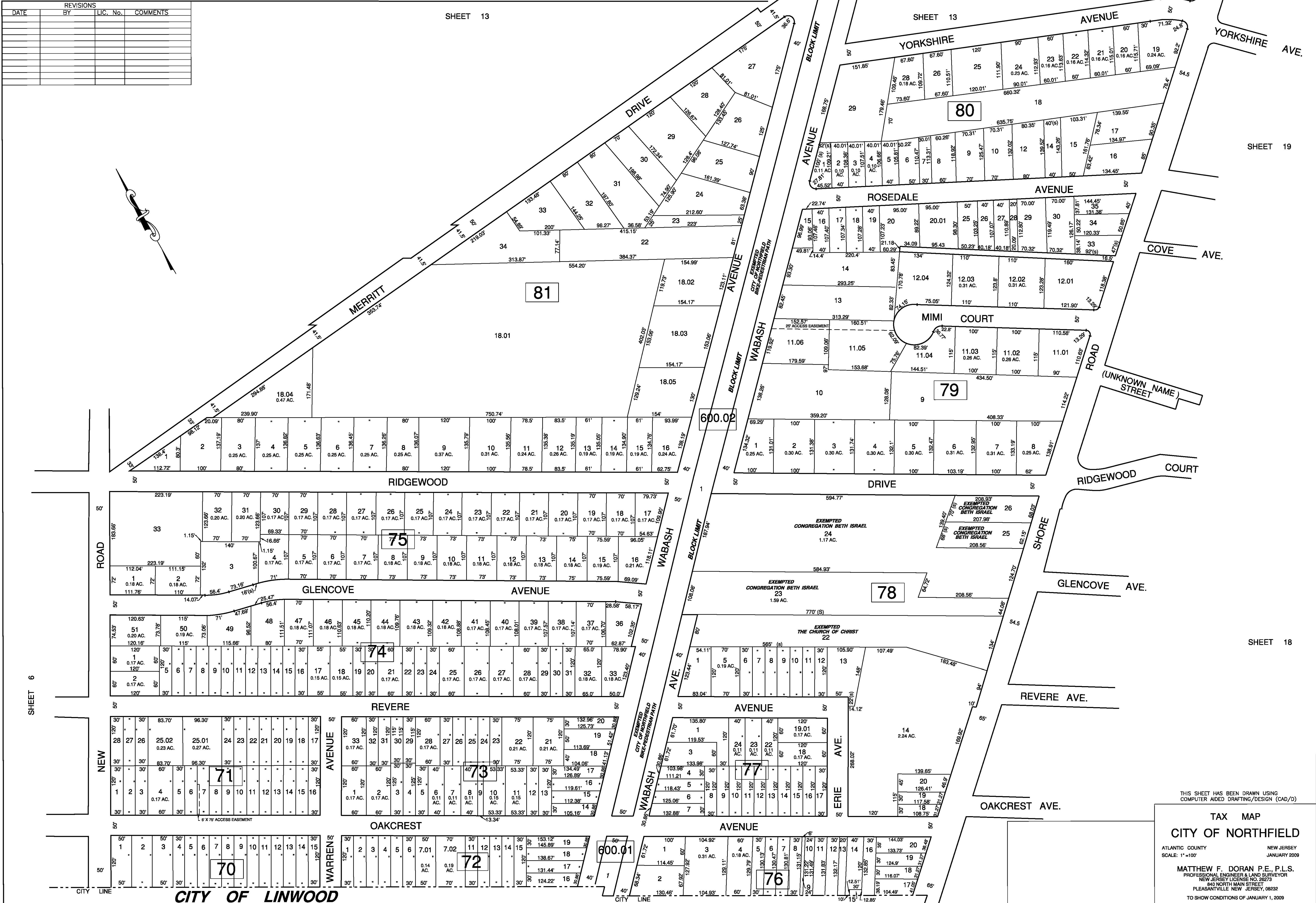
REVISIONS			
DATE	BY	LIC. No.	COMMENTS

SHEET 13

SHEET 13

SHEET 19

SHEET 18



THIS SHEET HAS BEEN DRAWN USING COMPUTER AIDED DRAFTING/DESIGN (CAD/D)

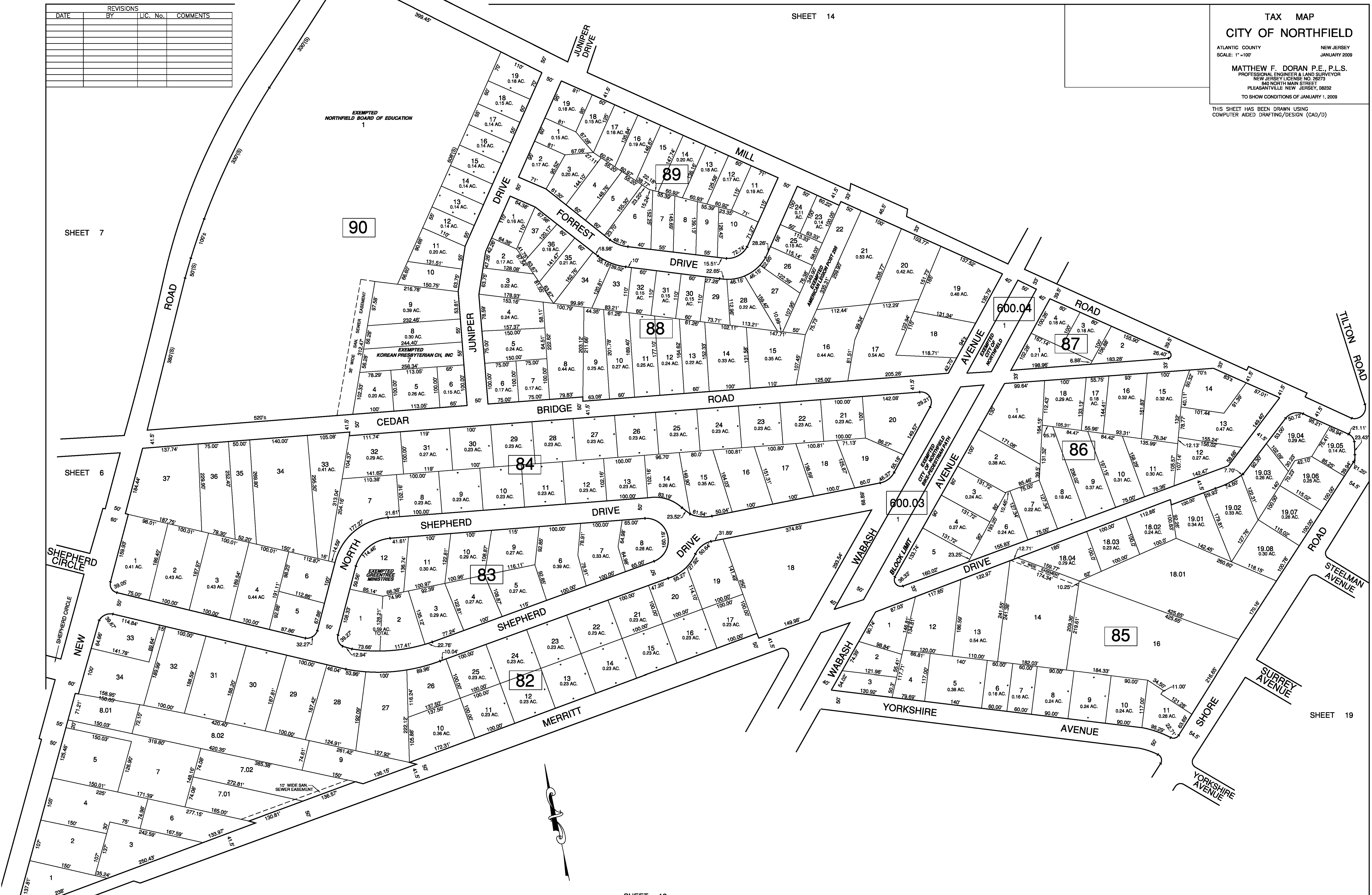
TAX MAP
CITY OF NORTHFIELD
 ATLANTIC COUNTY NEW JERSEY
 SCALE: 1"=100' JANUARY 2009
 MATTHEW F. DORAN P.E., P.L.S.
 PROFESSIONAL ENGINEER & LAND SURVEYOR
 NEW JERSEY LICENSE NO. 28273
 840 NORTH MAIN STREET
 PLEASANTVILLE NEW JERSEY 08232
 TO SHOW CONDITIONS OF JANUARY 1, 2009

REVISIONS			
DATE	BY	LIC. No.	COMMENTS

SHEET 14

TAX MAP
CITY OF NORTHFIELD
 ATLANTIC COUNTY NEW JERSEY
 SCALE: 1" = 100' JANUARY 2009
MATTHEW F. DORAN P.E., P.L.S.
 PROFESSIONAL ENGINEER & LAND SURVEYOR
 NEW JERSEY LICENSE NO. 28273
 840 NORTH MAIN STREET
 PLEASANTVILLE, NEW JERSEY, 08232
 TO SHOW CONDITIONS OF JANUARY 1, 2009

THIS SHEET HAS BEEN DRAWN USING
 COMPUTER AIDED DRAFTING/DESIGN (CAD/D)



REVISIONS			
DATE	BY	LIC. No.	COMMENTS

TAX MAP
CITY OF NORTHFIELD
 ATLANTIC COUNTY NEW JERSEY
 SCALE: 1"=100' JANUARY 2009
MATTHEW F. DORAN P.E., P.L.S.
 PROFESSIONAL ENGINEER & LAND SURVEYOR
 NEW JERSEY LICENSE NO. 28873
 840 NORTH MAIN STREET
 PLEASANTVILLE NEW JERSEY, 08232
 TO SHOW CONDITIONS OF JANUARY 1, 2009

THIS SHEET HAS BEEN DRAWN USING
 COMPUTER AIDED DRAFTING/DESIGN (CAD/D)

SHEET 15



SHEET 8

SHEET 9

SHEET 13

SHEET 20

SHEET 19



REVISIONS			
DATE	BY	LIC. No.	COMMENTS

THIS SHEET HAS BEEN DRAWN USING
COMPUTER AIDED DRAFTING/DESIGN (CAD/D)

TAX MAP
CITY OF NORTHFIELD

ATLANTIC COUNTY NEW JERSEY
SCALE: 1"=100' JANUARY 2009

MATTHEW F. DORAN P.L.S.
PROFESSIONAL ENGINEER & LAND SURVEYOR
NEW JERSEY LICENSE NO. 28873
840 NORTH MAIN STREET
PLEASANTVILLE NEW JERSEY, 08832
TO SHOW CONDITIONS OF JANUARY 1, 2009

REVISIONS		
DATE	BY	COMMENTS

TAX MAP
CITY OF NORTHFIELD
 ATLANTIC COUNTY NEW JERSEY
 SCALE: 1" = 100' JANUARY 2009

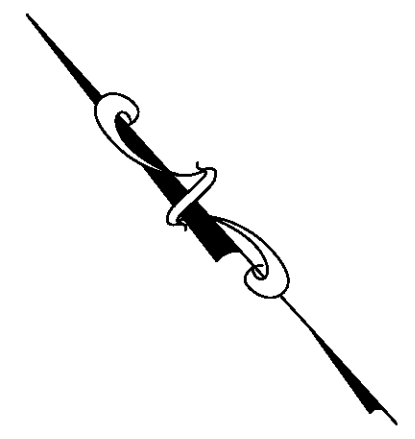
MATTHEW F. DORAN P.E., P.L.S.
 PROFESSIONAL ENGINEER & LAND SURVEYOR
 NEW JERSEY LICENSE NO. 28273
 840 NORTH MAIN STREET
 PLEASANTVILLE NEW JERSEY, 08232
 TO SHOW CONDITIONS OF JANUARY 1, 2009

THIS SHEET HAS BEEN DRAWN USING
 COMPUTER AIDED DRAFTING/DESIGN (CAD/D)

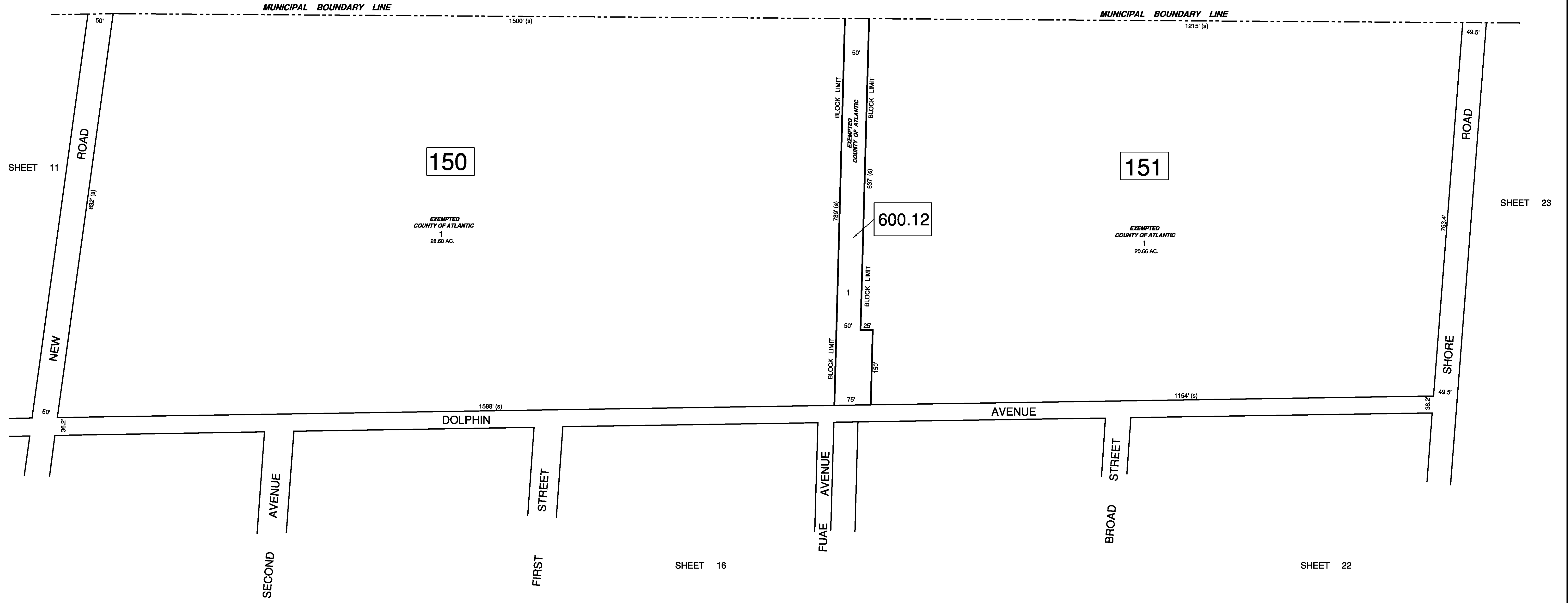
SHEET 17



SHEET 15



CITY OF PLEASANTVILLE



REVISIONS			
DATE	BY	LIC. No.	COMMENTS

THIS SHEET HAS BEEN DRAWN USING
COMPUTER AIDED DRAFTING/DESIGN (CAD/D)

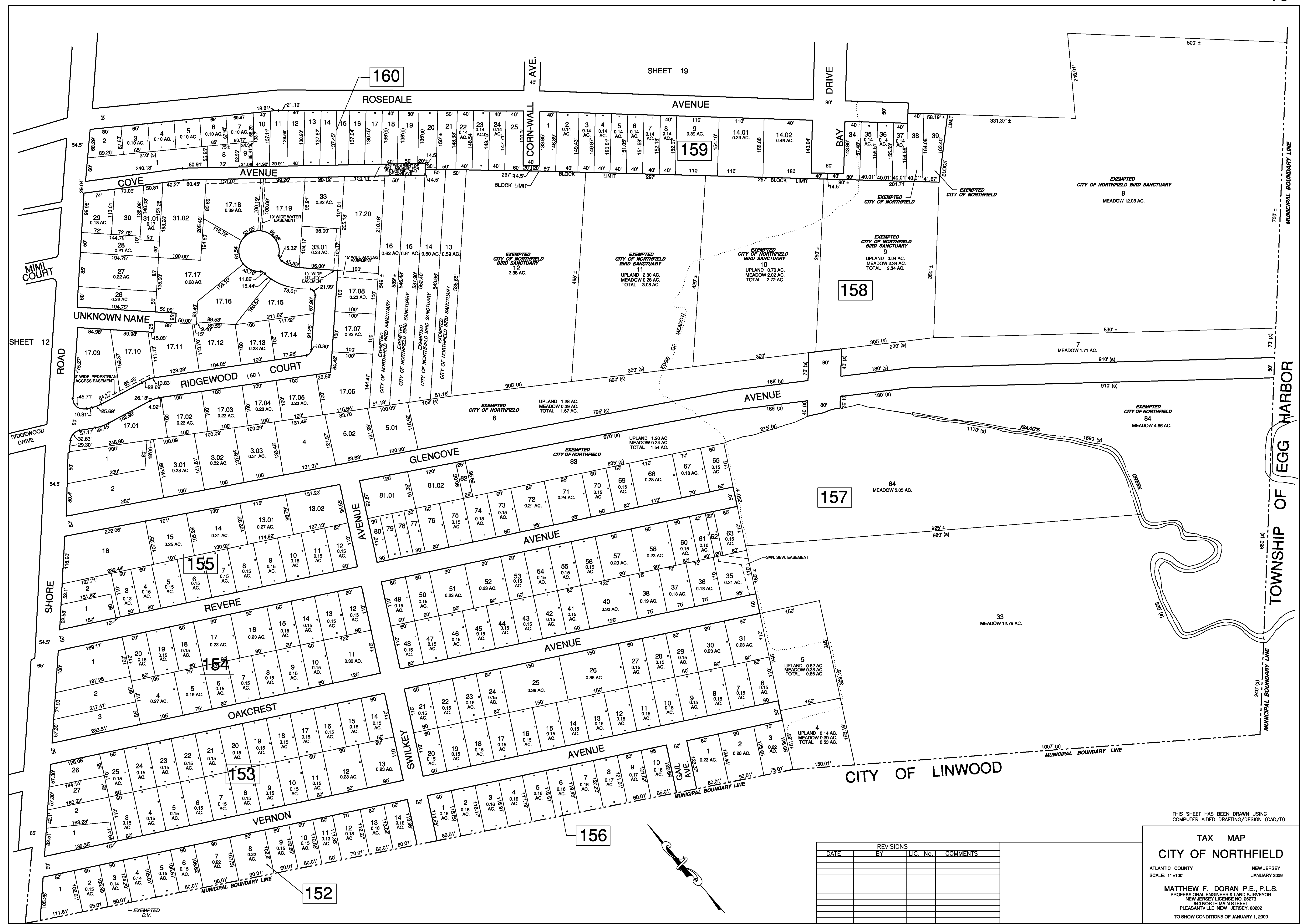
TAX MAP
CITY OF NORTHFIELD

ATLANTIC COUNTY
SCALE: 1" = 100'

NEW JERSEY
JANUARY 2009

MATTHEW F. DORAN P.E., P.L.S.
PROFESSIONAL ENGINEER & LAND SURVEYOR
NEW JERSEY LICENSE NO. 296273
840 NORTH MAIN STREET
PLEASANTVILLE NEW JERSEY, 08232
TO SHOW CONDITIONS OF JANUARY 1, 2009

SHEET 19



REVISIONS			
DATE	BY	LIC. No.	COMMENTS

THIS SHEET HAS BEEN DRAWN USING
COMPUTER AIDED DRAFTING/DESIGN (CAD/D)

TAX MAP
CITY OF NORTHFIELD

ATLANTIC COUNTY NEW JERSEY
SCALE: 1"=100' JANUARY 2009

MATTHEW F. DORAN P.E., P.L.S.
PROFESSIONAL ENGINEER & LAND SURVEYOR
NEW JERSEY LICENSE NO. 28273
840 NORTH MAIN STREET
PLEASANTVILLE NEW JERSEY 08232
TO SHOW CONDITIONS OF JANUARY 1, 2009



175

1.01
 UPLAND 71.71 AC.
 MEADOW 23.02 AC.
 TOTAL 94.73 AC.

REVISIONS			
DATE	BY	LIC. No.	COMMENTS

TAX MAP
CITY OF NORTHFIELD
 ATLANTIC COUNTY NEW JERSEY
 SCALE: 1" = 100' JANUARY 2009
 MATTHEW F. DORAN P.E., P.L.S.
 PROFESSIONAL ENGINEER & LAND SURVEYOR
 NEW JERSEY LICENSE NO. 28273
 340 NORTH MAIN STREET
 PLEASANTVILLE NEW JERSEY, 08232
 TO SHOW CONDITIONS OF JANUARY 1, 2009

REVISIONS			
DATE	BY	LIC. No.	COMMENTS

SHEET 17

DOLPHIN AVENUE

VIRGINIA AVENUE

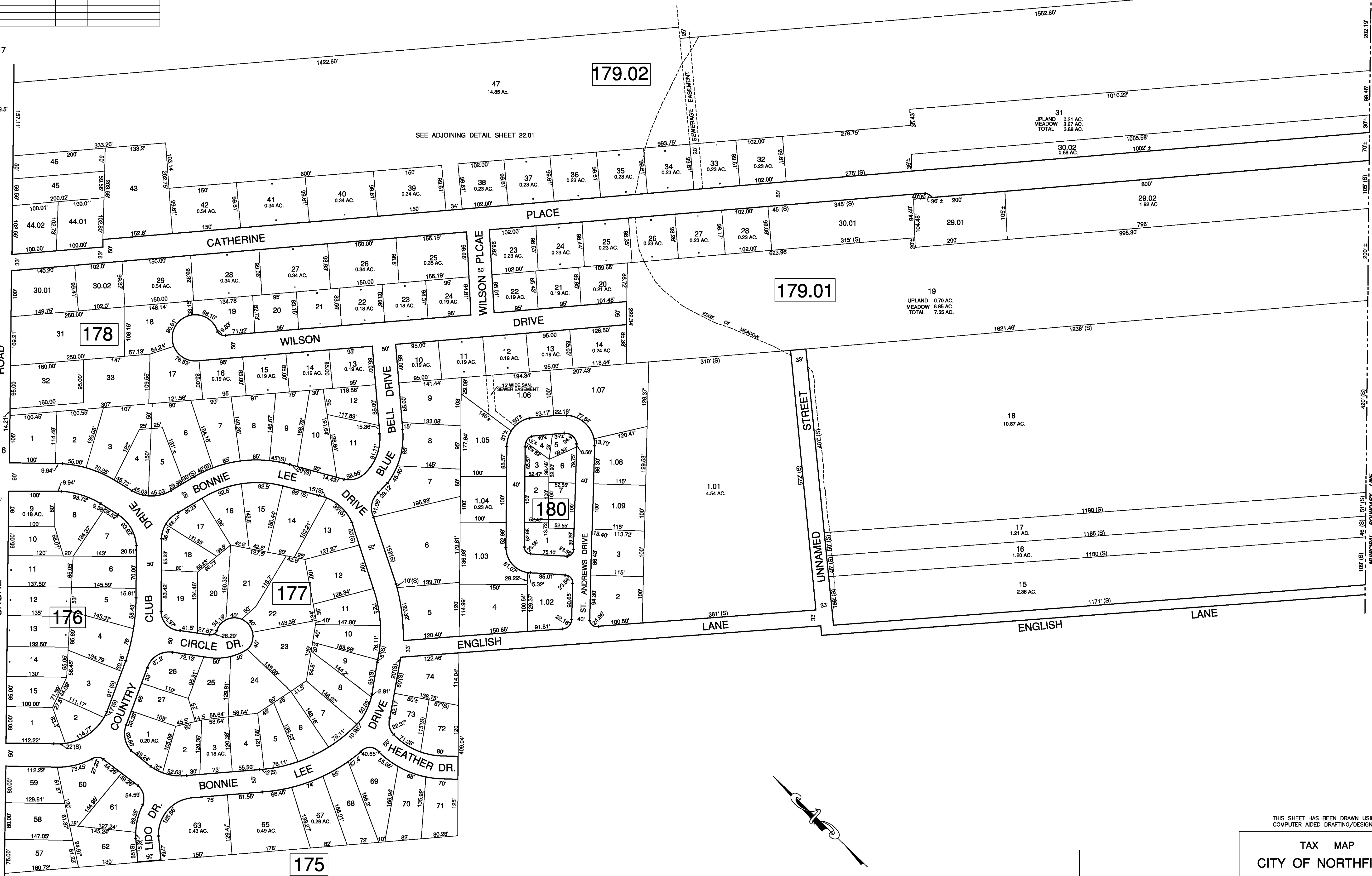
FRANKLIN AVENUE

SHEET 16

HADDON AVENUE

HADDON GREEN AVENUE

FAIRWAY AVENUE



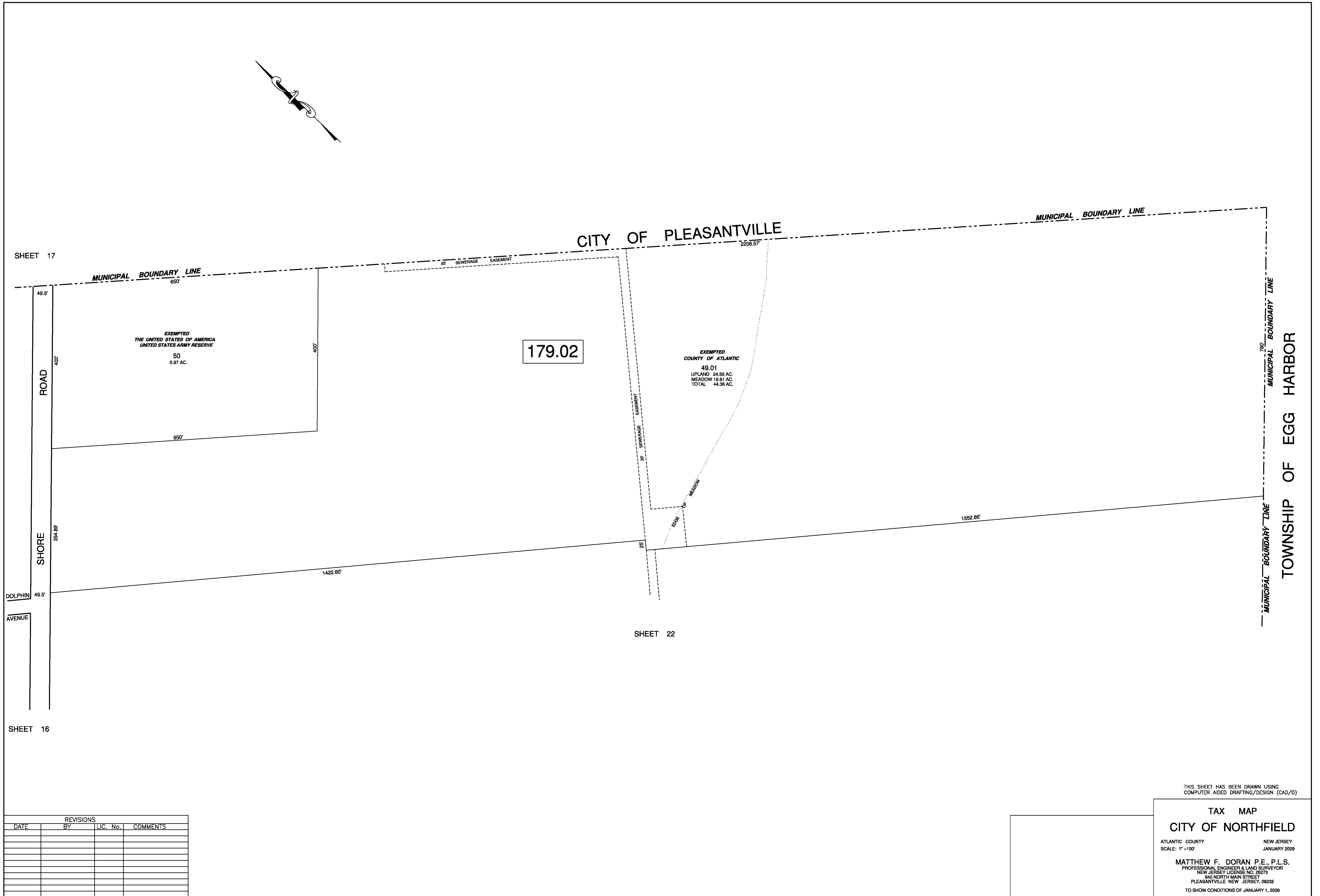
TOWNSHIP OF EGG HARBOR

THIS SHEET HAS BEEN DRAWN USING
COMPUTER AIDED DRAFTING/DESIGN (CAD/D)

TAX MAP
CITY OF NORTHFIELD

ATLANTIC COUNTY NEW JERSEY
SCALE: 1"=100' JANUARY 2009

MATTHEW F. DORAN P.E., P.L.S.
PROFESSIONAL ENGINEER & LAND SURVEYOR
NEW JERSEY LICENSE NO. 28273
940 NORTH MAIN STREET
PLEASANTVILLE, NEW JERSEY 08222
TO SHOW CONDITIONS OF JANUARY 1, 2009



SHEET 17

SHEET 16

SHEET 22

REVISIONS			
DATE	BY	LIC. No.	COMMENTS

THIS SHEET HAS BEEN DRAWN USING COMPUTER AIDED DRAFTING/DESIGN (CAD/D)

TAX MAP
CITY OF NORTHFIELD
 ATLANTIC COUNTY NEW JERSEY
 SCALE: 1" = 100' JANUARY 2009
 MATTHEW F. DORAN P.E., P.L.S.
 PROFESSIONAL ENGINEER & LAND SURVEYOR
 NEW JERSEY LICENSE NO. 26273
 840 NORTH MAIN STREET
 PLEASANTVILLE NEW JERSEY, 08232
 TO SHOW CONDITIONS OF JANUARY 1, 2009