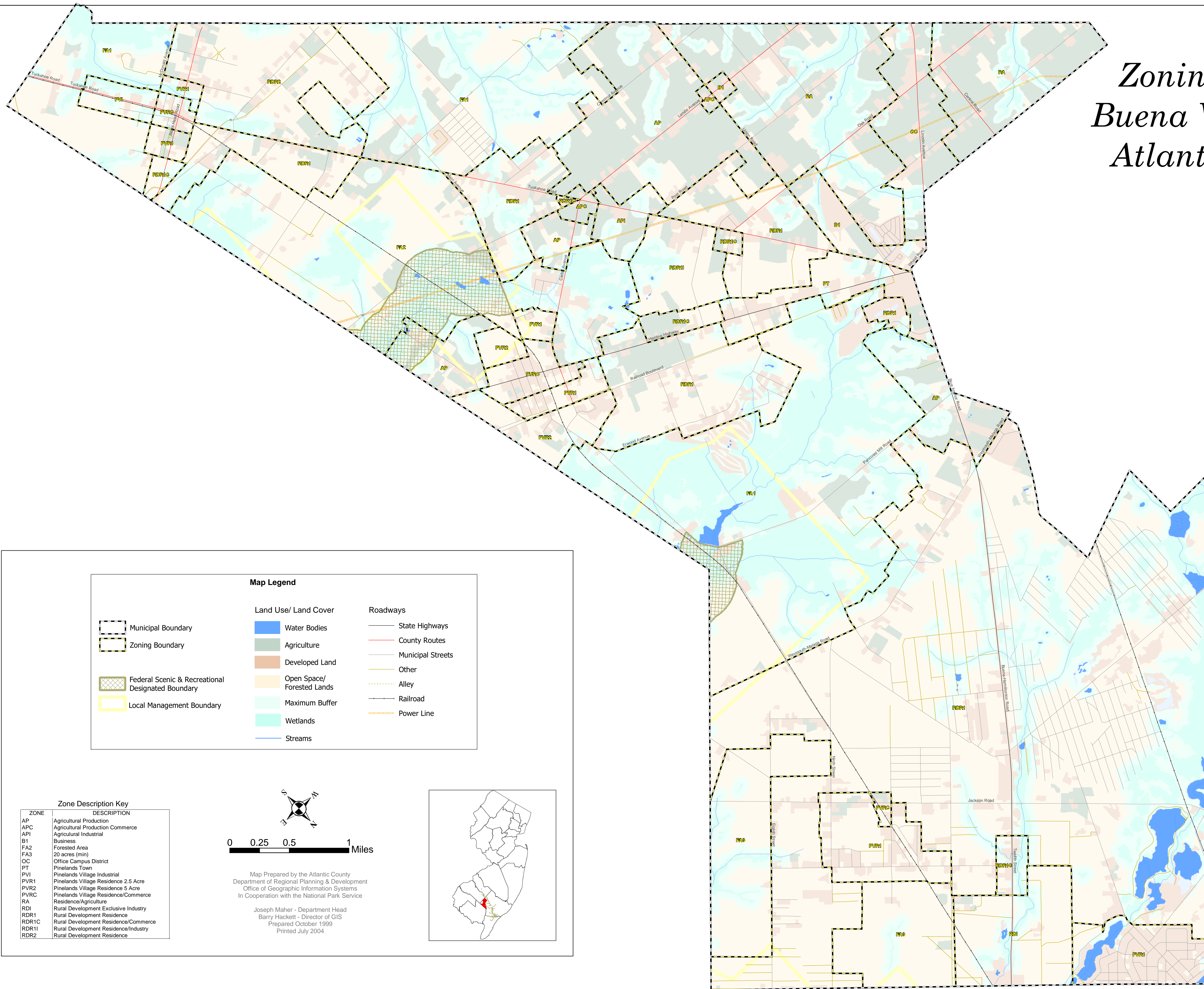


Zoning Boundaries Buena Vista Township Atlantic County, NJ

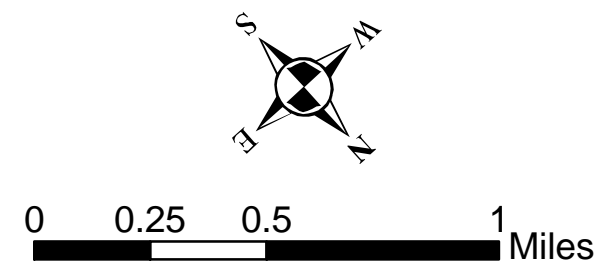


Map Legend

Municipal Boundary	Land Use/ Land Cover	Roadways
Zoning Boundary	Water Bodies	State Highways
Federal Scenic & Recreational Designated Boundary	Agriculture	County Routes
Local Management Boundary	Developed Land	Municipal Streets
	Open Space/ Forested Lands	Other
	Maximum Buffer	Alley
	Wetlands	Railroad
	Streams	Power Line

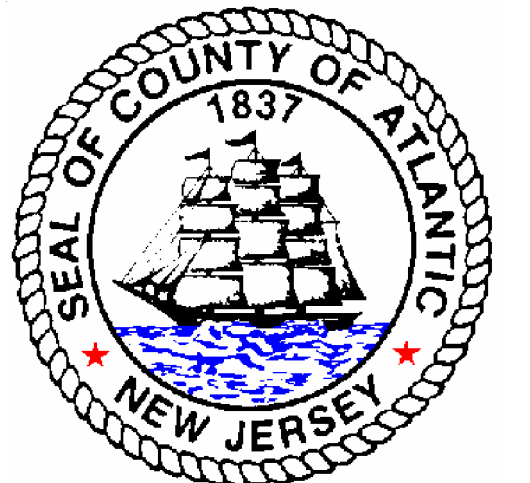
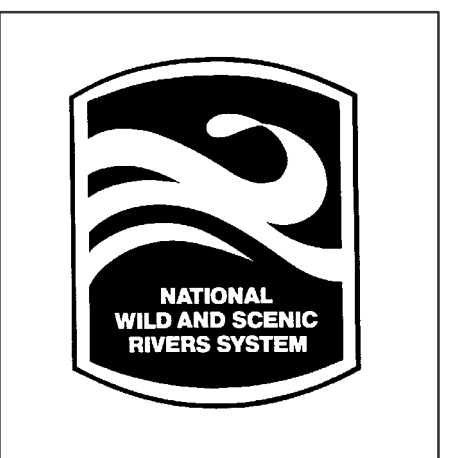
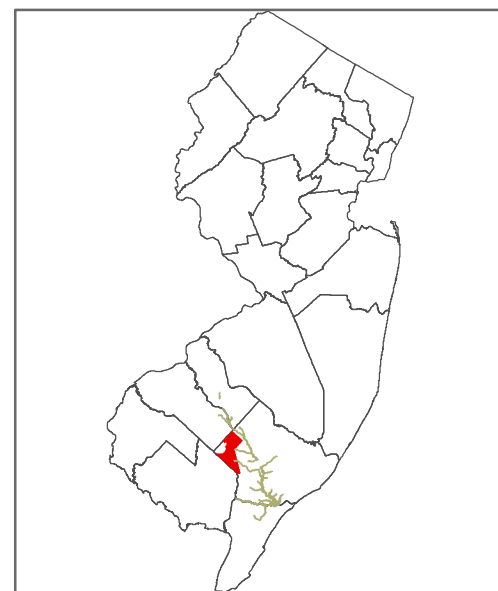
Zone Description Key

ZONE	DESCRIPTION
AP	Agricultural Production
APC	Agricultural Production Commerce
API	Agricultural Industrial
B1	Business
FA2	Forested Area
FA3	20 acres (min)
OC	Office Campus District
PT	Pinelands Town
PV1	Pinelands Village Industrial
PVR1	Pinelands Village Residence 2.5 Acre
PVR2	Pinelands Village Residence 5 Acre
PVRC	Pinelands Village Residence/Commerce
RA	Residence/Agriculture
RDI	Rural Development Exclusive Industry
RDR1	Rural Development Residence
RDR1C	Rural Development Residence/Commerce
RDR1I	Rural Development Residence/Industry
RDR2	Rural Development Residence



Map Prepared by the Atlantic County
Department of Regional Planning & Development
Office of Geographic Information Systems
In Cooperation with the National Park Service

Joseph Maher - Department Head
Barry Hackett - Director of GIS
Prepared October 1999
Printed July 2004



This map is for demonstration purposes only and was not developed in accordance with National Map Accuracy Standards. Any use of this product with respect to accuracy and precision shall be the sole responsibility of the user. The map was developed, in part, using New Jersey Department of Environmental Protection Geographic Information System (GIS) digital data, in conjunction with the Atlantic County Office of Geographic Information Systems, but this secondary product has not been verified by NJDEP and is not state authorized.

The geodetic accuracy and precision of the GIS data contained in this map has not been developed nor verified by a professional licensed land surveyor and shall not be nor is intended to be used in matters requiring delineation and location of true ground horizontal and/or vertical controls.
Map Document: Buv.mxd 7/8/2004