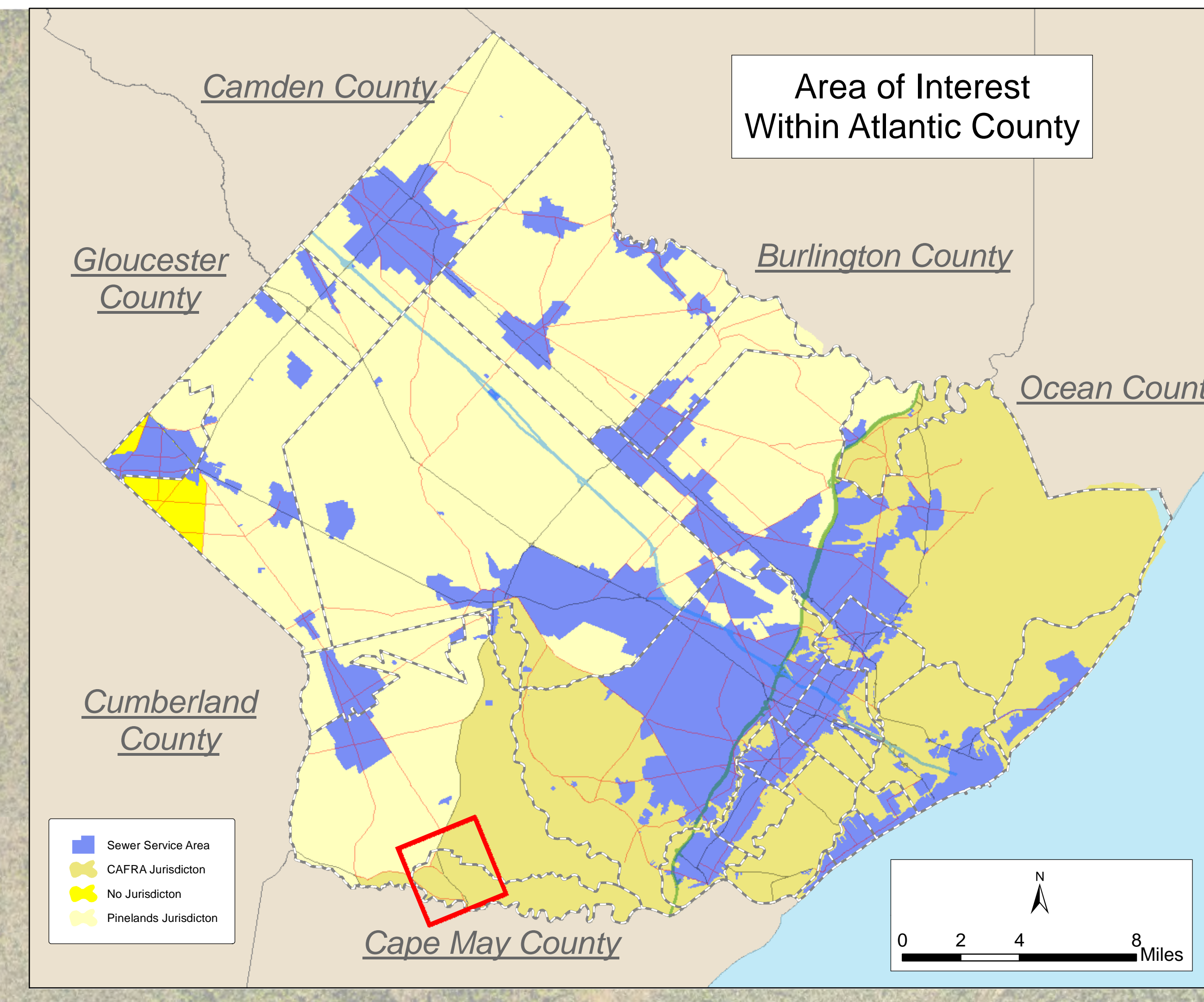




# Corbin City Future Wastewater Service Area Adopted November 6, 2013



Locations of future pump stations, major interceptors, and trunk sewers are being provided for general information only and will not serve as the basis for any future consistency determinations or permit reviews unless the pump station, major interceptor or trunk sewer is part of a State or federally funded project.

Pursuant to N.J.A.C. 7:15, Riparian zones are 300 feet from top of bank (or centerline of a first order stream where no bank is apparent) for waters designated as Category One and all upstream waters within the same HUC. 150 feet for waters designated Trout Production and all upstream waters. 150 feet for water designated Trout Nurseries and all upstream waters within one linear mile as measured along the length of the regulated water. 150 feet for any segments of water flowing through an area that contains documented habitat for a threatened or endangered species of plant or animal, which is critically dependent on the surface water body for survival, and all upstream waters (including tributaries) within one linear mile as measured along the length of the surface water body. 150 feet for waters that run through acid-producing soils, and 50 feet for all waters not designated as C1 trout waters, critically water dependent Threatened and/or Endangered Species Habitat, or associated with acid soils.

Surface waters that are designated Category One are listed in the Surface Water Quality Standards at N.J.A.C. 7:9B. The Department's "Surface Water Quality Standards" GIS data layer was utilized to determine these waters. The applicable 300 foot buffer has been applied to these waterways and removed from the proposed sewer service area on the mapping. Lesser with buffers have not been gradually removed from the sewer service area but are not proposed for sewer service. Counties may not be the lesser with buffers but the 300' buffers are the minimum. The lesser buffers are removed during the build-out analysis. Jurisdictional determinations by the Department will be utilized to determine the extent of the sewer service area on individual lots.

Furthermore, compliance with the riparian zone standard has been demonstrated by the adoption of municipal Riparian Corridor Ordinances, which have been updated to be in compliance with the Flood Hazard Control Act Rules (N.J.A.C. 7:13) and Water Quality Management Rules (N.J.A.C. 7:15). See municipal chapters for additional information.

"All existing, new, or expanded industrial pretreatment facilities requiring Significant Indirect User (SIU) permits and/or Treatment Works Approvals, and which are located within the specified sewer service area, are deemed to be consistent."

"The existing grant conditions and requirements from Federal and State grants or loans for sewerage facilities which provide for restriction of sewer service to environmentally sensitive areas, are unaffected by adoption of this WMP and compliance is required. Please see municipal WMP Chapters for the existence of any applicable environmentally sensitive areas in which Federal 201 grant limitations prohibit the extension of sewer service."

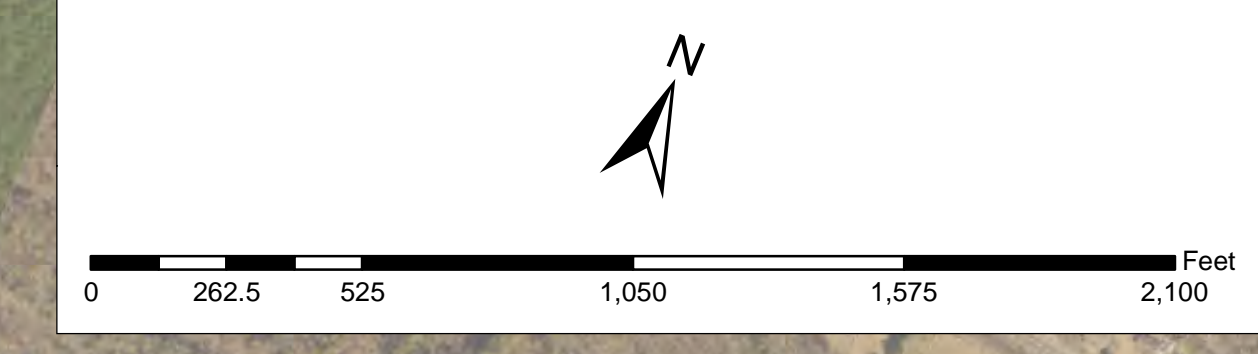
"Individual subsurface sewage disposal systems (ISSDS) for individual residences can only be constructed in depicted sewer service areas if legally enforceable guarantees are provided, before such construction, that use of such systems will be discontinued when the depicted sewer service becomes available. This applies to ISSDS that require certification from the Department under the Ready Improvement Sewerage and Facilities Act (NJSA 18:1-23) or individual Treatment Works Approval or New Jersey Pollutant Discharge Elimination System Permits under NJAC 7:14A. It also applies to ISSDS which require only local approvals. Compliance with the connection requirement has been demonstrated through adoption of municipal and/or sewerage authority ordinances. See municipal chapters for additional information."

"Development in areas mapped as wetlands, flood prone areas, suitable habitat for endangered and threatened species as identified on the Department's Landscape Maps of Habitat for Endangered, Threatened and Other Priority Wildlife as Bank 1, 4, and 5, Natural Heritage Priority Sites, riparian zones, steep slopes, or designated river areas may be subject to special regulation under Federal or State statutes or rules, and interested persons should check with the Department for the latest information. Deposition of environmental features shall be for general information purposes only, and shall not be construed to define the legal geographic jurisdiction of such features or rules."

"Areas located within the watershed of a Freshwater One (FW1) stream, as classified in the Surface Water Quality Standards, and/or that have Class 1-A ground water (Ground Water of Special Ecological Significance), as classified in the Ground Water Quality Standards, are identified as "Non-degradation water areas based on the Surface Water Quality Standards at N.J.A.C. 7:9B, and/or the Ground Water Quality Standards at N.J.A.C. 7:9C. Where this requirement has been studied and reviewed as part of the WMP process this classification appears on Map 43. Non-degradation water areas shall be maintained in their natural state (as used for purposes) and are subject to restrictions including, but not limited to, the following: 1) DEP will not approve any pollutant discharge to ground water nor approve any human activity which is a degradation of natural quality essential for the upgrade or continued operation of existing facilities serving existing development. For additional information please see the Surface Water Quality Standards at N.J.A.C. 7:9B, and/or the Ground Water Quality Standards at N.J.A.C. 7:9C."

"Proposed developments tying into existing and proposed sewer service areas which require coastal permits must demonstrate compliance with all applicable sections of the Coastal

Facility Name	NUMER
Alpine Village Mobile Home Court	NJ0107824
L's Restaurant	NJ0167797
Somerset Cove Marina LLC	NJ0103600
Greenview Golf Course	NJ0159250
Marin Apartments	NJ0146897
East Manor - Atlantic County Park	NJ0159490
The Foreway Restaurant	NJ0128627
Oceanville Station	NJ0167231
Callaway National Golf Club Race	NJ0106886
Chesnut Lake Campground	NJ0153548
Pleasant Valley Campground	NJ0085102
Class of Weymouth Park	NJ0066562
Alpine Village Mobile Home Court	NJ0107824
Richard Glass Co.	NJ0000474
Winding River Campground	NJ0006267
Riparian Academy	NJ0154782
Holy Acres Best Holiday Triv-L-Park	NJ0085707
Mullica Woods Mobile Home Park	NJ0112640
Burns Family Manor	NJ0084648
Indian Branch Park Campground	NJ0102917
Scholar, Inc.	NJ0032441
Petrum Newspaper	NJ0160766
Liberty Square Enterprises LLC	NJ0134837
Paradise Lakes Campground	NJ0000607
Smithville Professional Center	NJ0078779
Bay Breeze Village Mobile Home Park	NJ0064417
Central New Jersey Family Campground	NJ0066192
Egg Harbor River Resort	NJ0069270
Oakcrest Mobile Home Park LLC	NJ0064436
Redbank Hill Campground	NJ0000366
C&E Gardens Inc.	NJ0051071
Country Oaks	NJ0060251
Westmonte Trs. Elementary School plant	NJ0104133
Blue Wood School	NJ0086340
East Manor Elementary School	NJ0105491
Felton Elementary School	NJ0102692
Moornings at Seaside	NJ00702
Red Wing Lakes Campground	NJ0150780
South Jersey Gas Company	NJ0100661
St. Augustine Preparatory School	NJ0132842
Sanvictor Gas	NJ0080374
Villa Romana Restaurant	NJ0166254
Wilmet Glass Co.	NJ0074004



- Sewer Service Area
- Waste Water Treatment Plant
- Municipal Buildings
- GS Parkway
- AC Expressway
- US & State Highways
- County Routes
- Jurisdictions
- Municipalities

This map is for demonstration purposes only and was not developed in accordance with National Map Accuracy Standards. Any use of this product with respect to accuracy and precision shall be the sole responsibility of the user. The map was developed, in part, using New Jersey Department of Environmental Protection Geographic Information System (GIS) digital data, in conjunction with the Atlantic County Office of Geographic Information Systems, but its secondary product has not been verified by NJDEP and is not state authorized. The geospatial accuracy and precision of the GIS data contained in this map has not been developed nor verified by a professional licensed land surveyor and shall not be used in matters requiring delineation and location of true ground, horizontal and/or vertical controls.

File: AtlanticCounty\_SSA\_110613\_COR.mxd Printed on: 10/19/2015